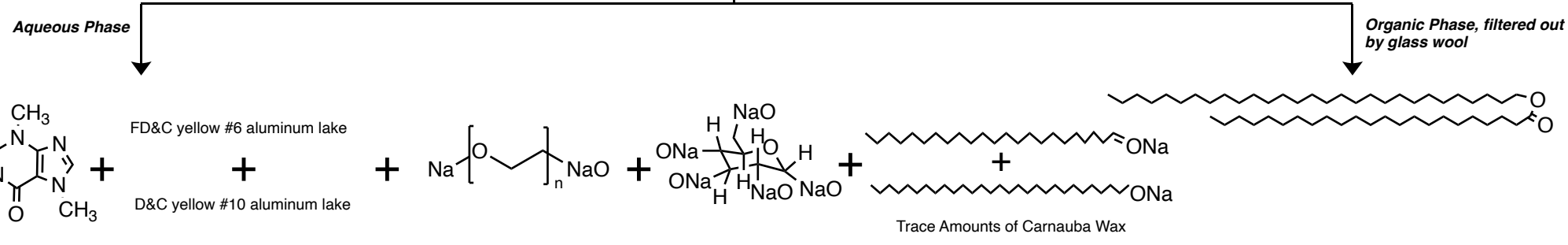
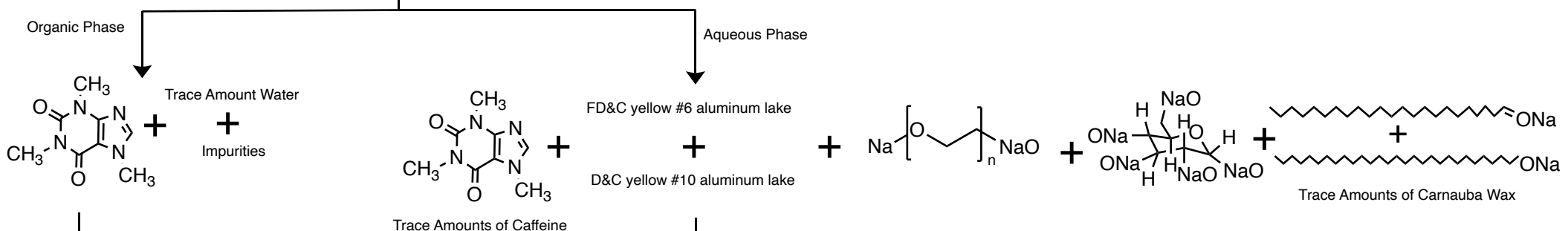


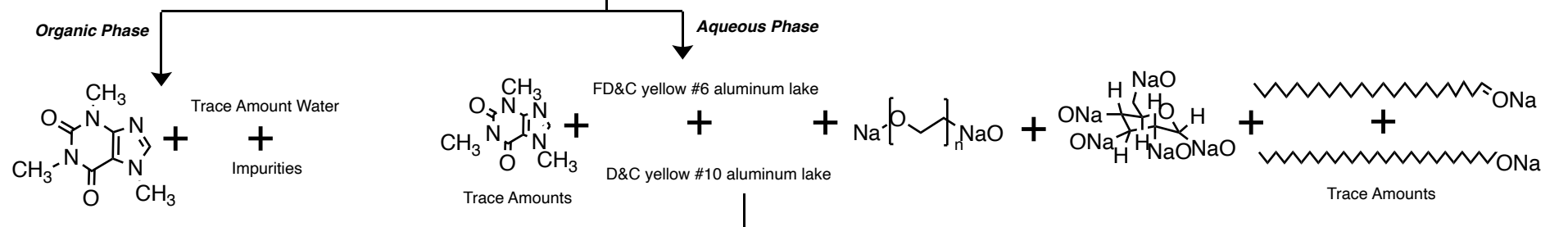
Extraction (60 mL DI water + 8 g Na<sub>2</sub>CO<sub>3</sub>)  
Filtration through glass wool



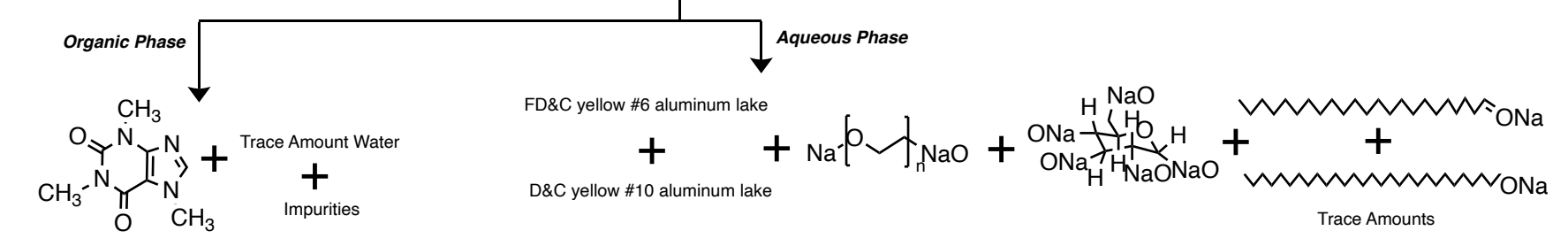
Extraction (7mL dichloromethane)



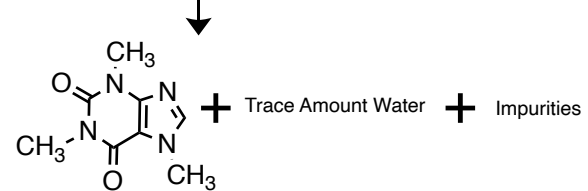
Extraction (7mL dichloromethane)



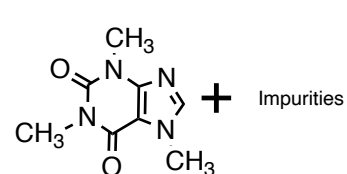
Extraction (7mL dichloromethane)



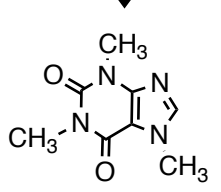
Drain/Combine Organic Layers Together



Drying Agent (sufficient amount of sodium sulfate or magnesium sulfate)  
Filtration via Drying Agent



Evaporation



Crude Caffeine (solid)

Recrystallization (12-15 mL acetone + sufficient drops of petroleum ether)



Purified Caffeine (solid)