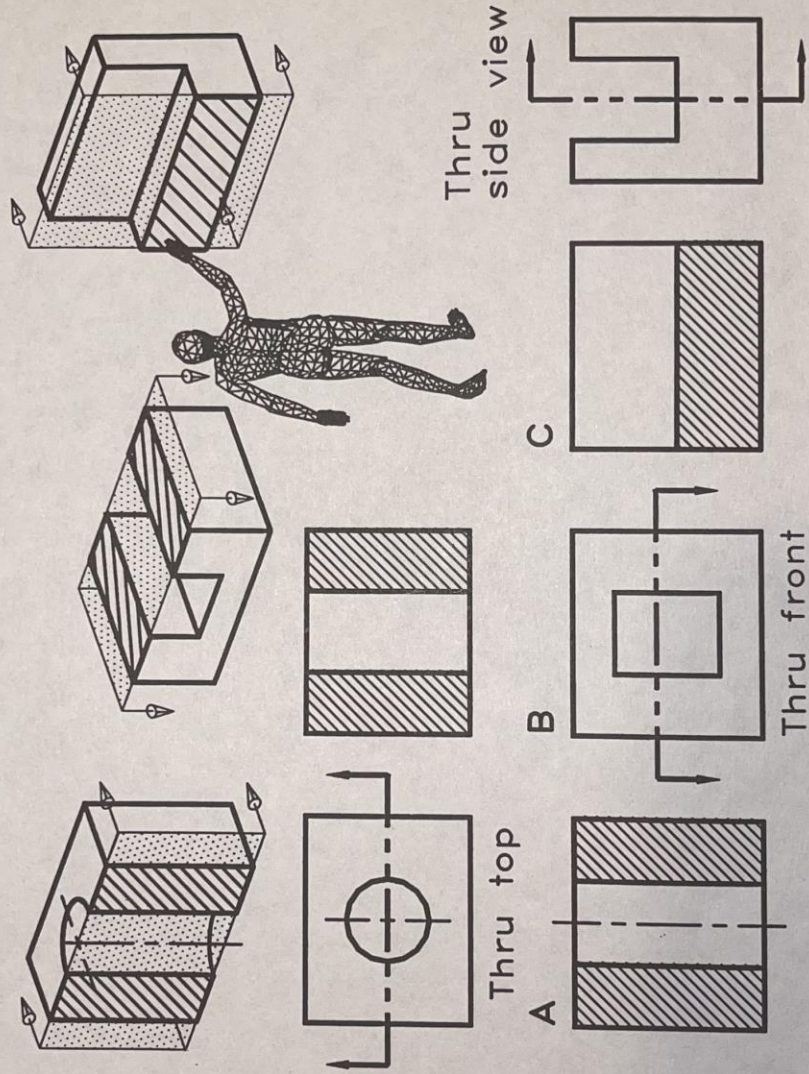
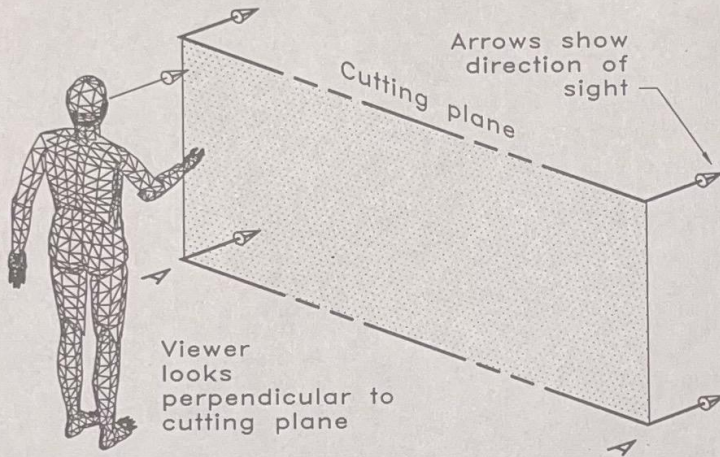
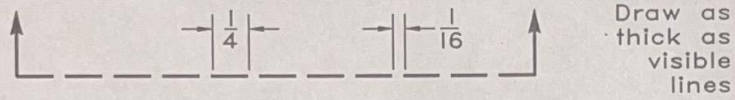
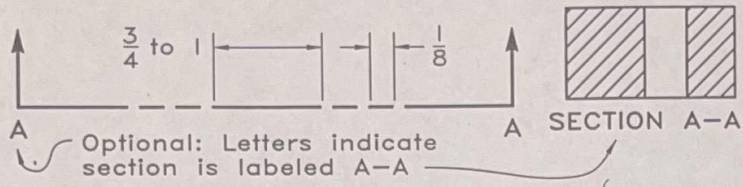
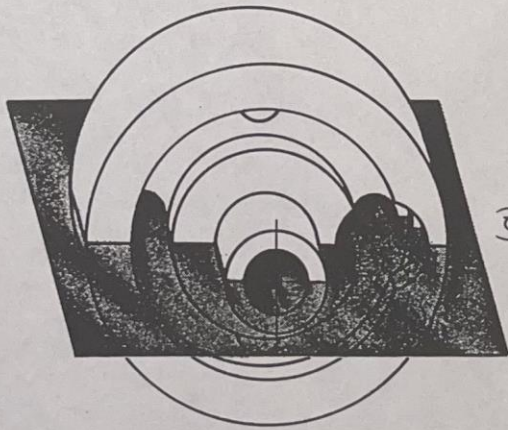


CUTTING-PLANE POSITIONS



CUTTING-PLANE LINES

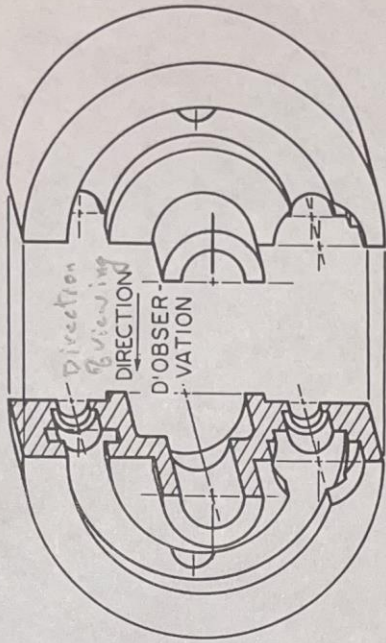




(a)

Principe d'une coupe.

Principle of section



(b)

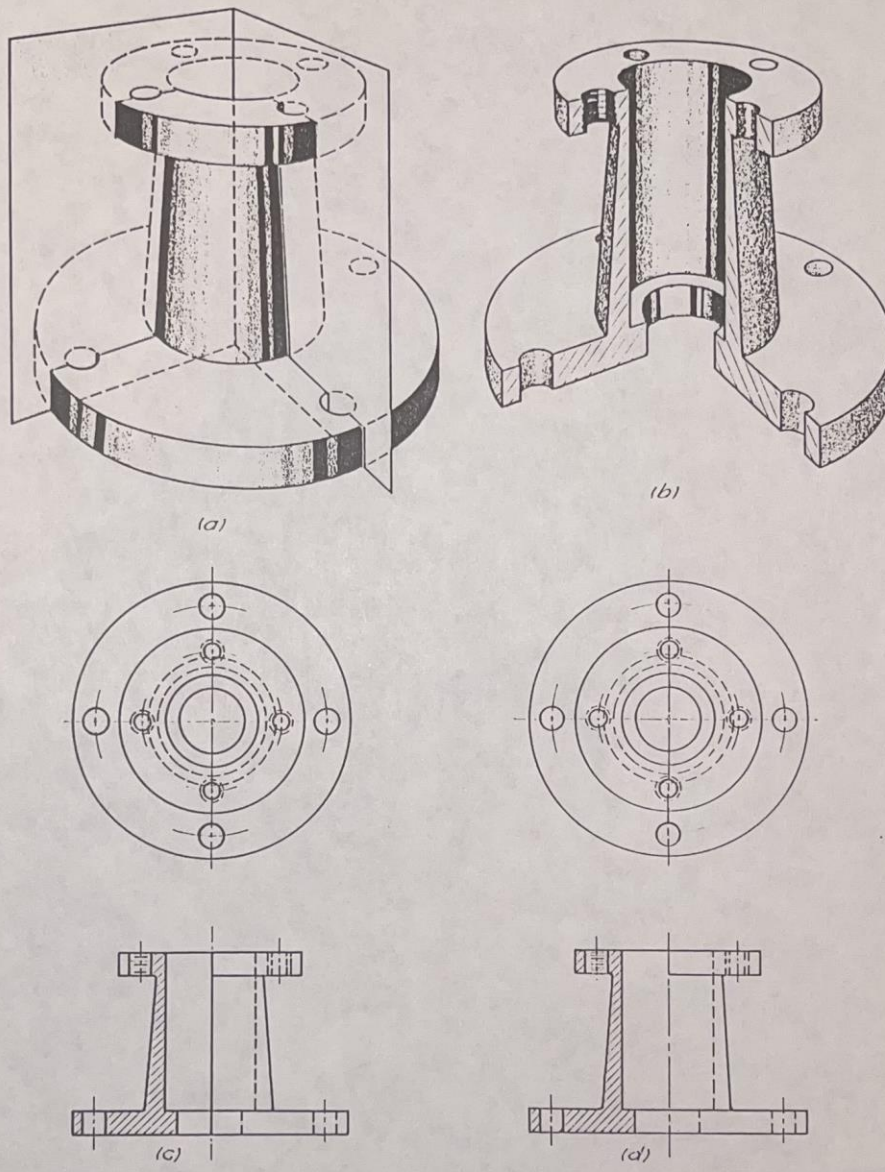
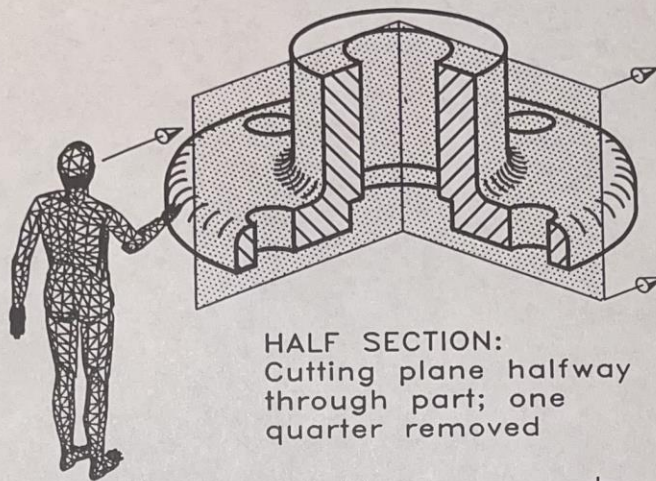
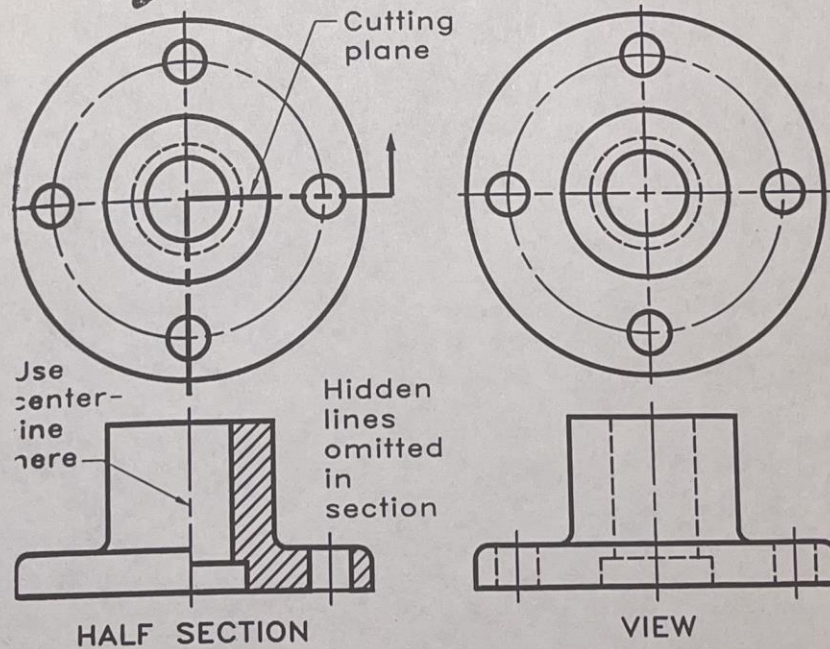


Fig. 8.14 A half-sectioned view.

Demi-coupes. Lorsqu'une vue d'une pièce est symétrique et que cette pièce comporte des détails intéressants qui sont intérieurs et extérieurs, il est fréquent qu'on en représente seulement une moitié en coupe et l'autre, en vue extérieure. Une telle vue est appelée *demi-coupe* **HALF SECTION**



HALF SECTION:
Cutting plane halfway through part; one quarter removed



HALF SECTION

VIEW

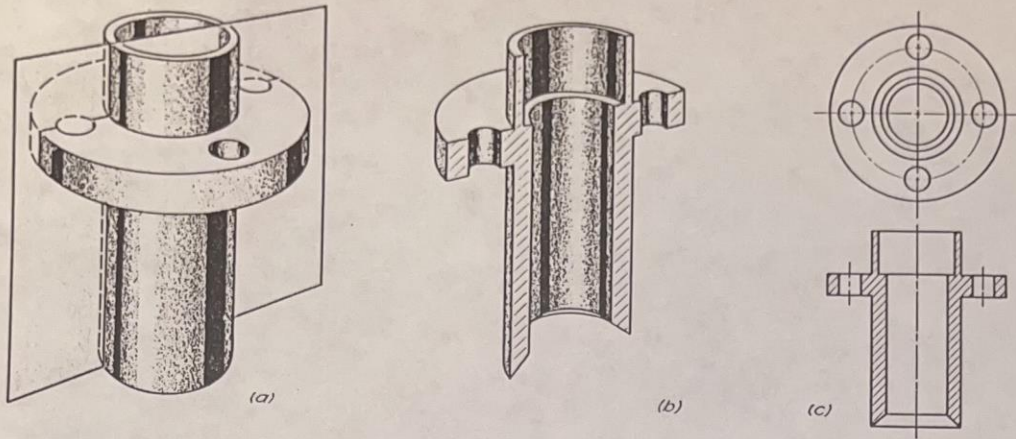


Fig. 8.13 A full-sectioned view.

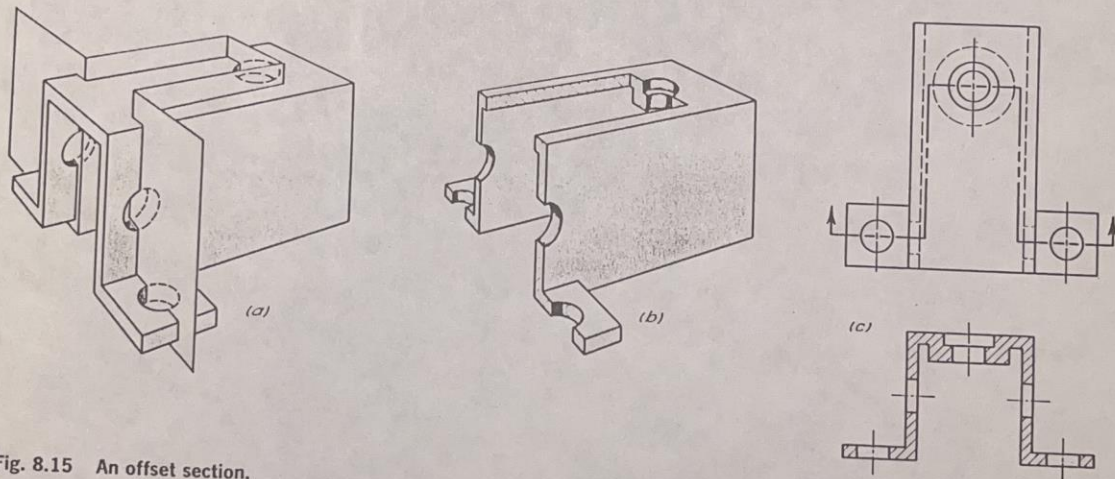
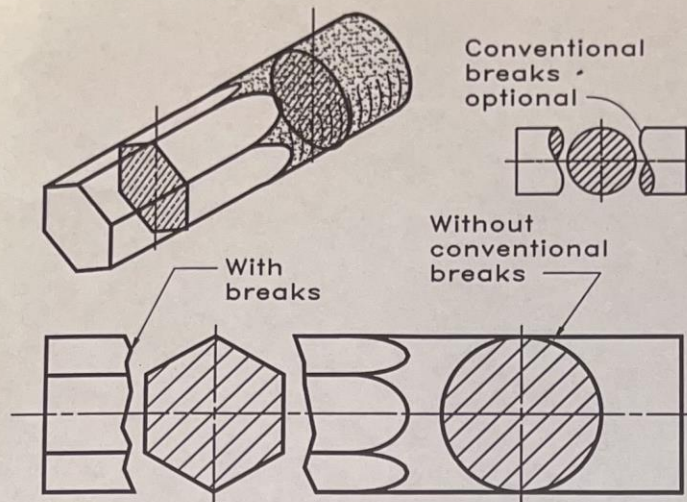
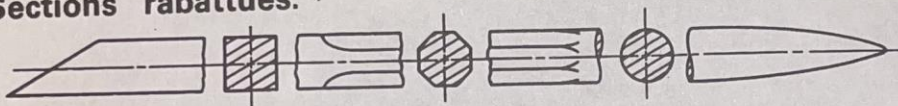


Fig. 8.15 An offset section.

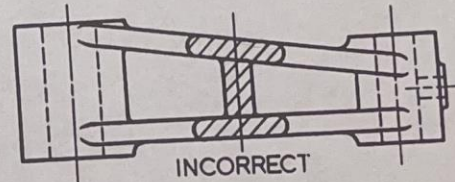
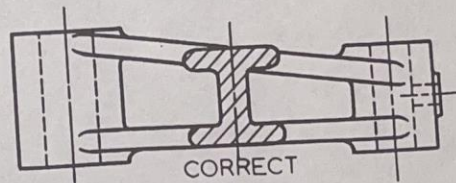
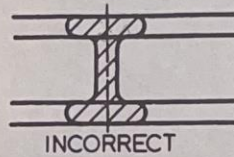
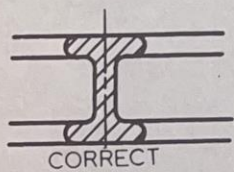


Revolved sections show cross-sectional features of a part to eliminate the need for supplementary orthographic views. You may superimpose revolved sections on the given views or use conventional breaks to separate them from the given views.

Sections rabattues.



Brisures conventionnelles utilisées dans les sections rabattues.



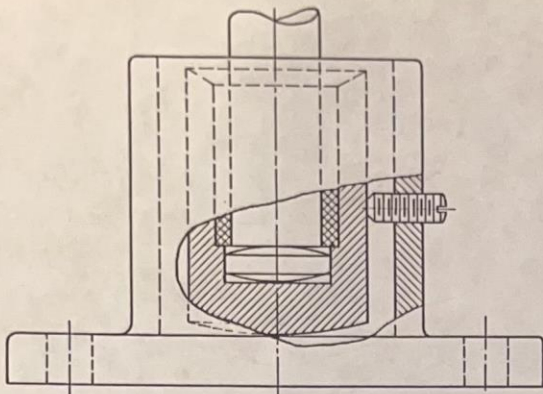


Fig. 8.25 Broken-out section.

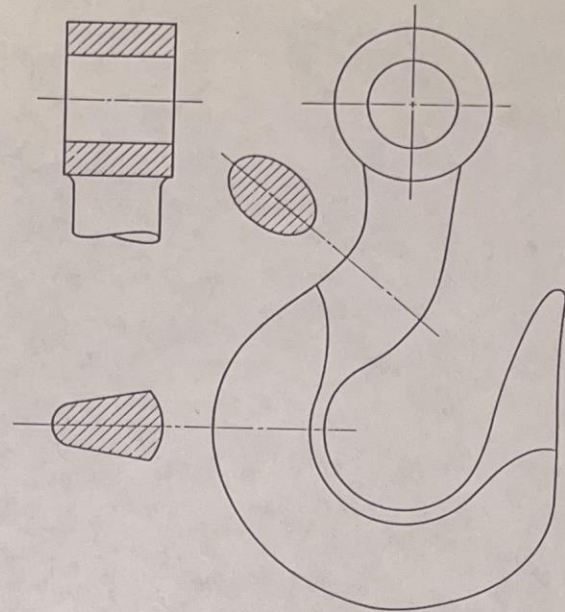
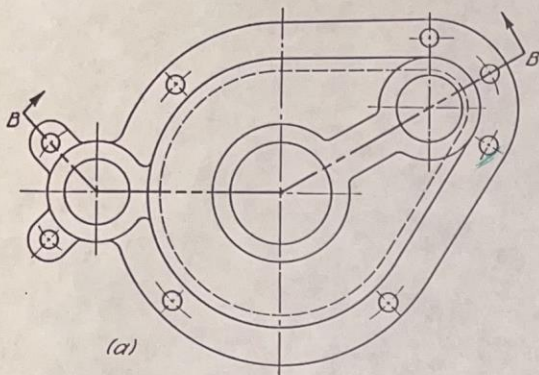
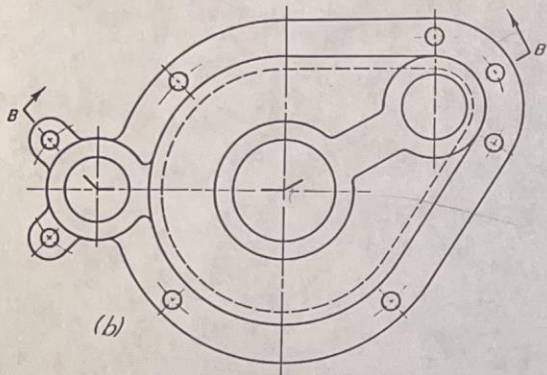


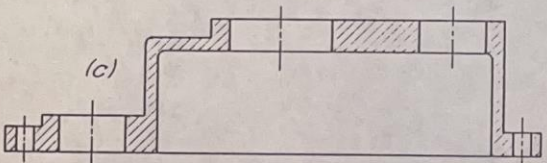
Fig. 8.22 Removed section on extended center line.



(a)

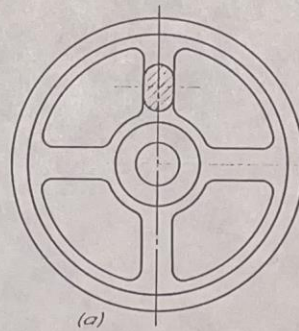


(b)

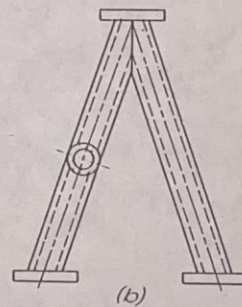


(c)

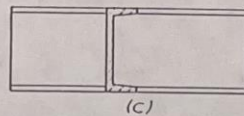
Fig. 8.16 Section plane turned at an angle. Aligned section.



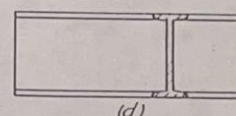
(a)



(b)



(c)



(d)

Fig. 8.18 Revolved sections.