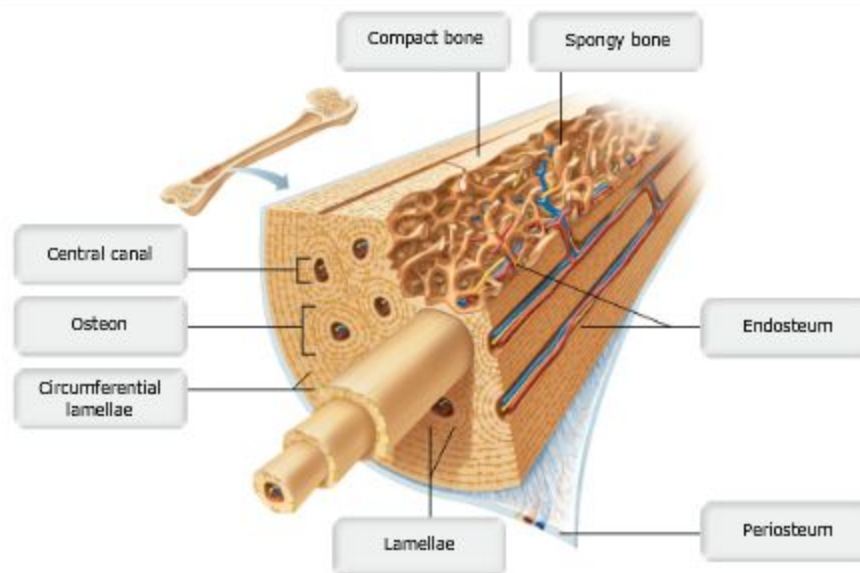


### Assignment 1 - Anatomical Terms, Skin and Bone Tissue

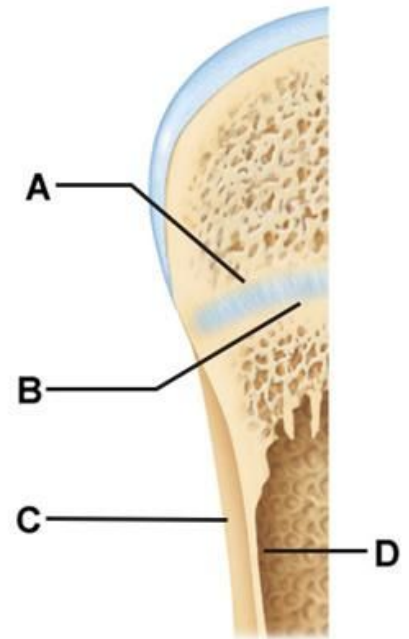
1. The dermis has two major layers; which of the following constitutes 80% of the dermis and is responsible for the tension lines in the skin?
  - Reticular layer
2. Despite its apparent durability, the dermis is subject to tearing. How might a person know that the dermis has been stretched and/or torn?
  - The appearance of visible, silvery-white scars is an indication of stretching of the dermis.
3. \_\_\_\_\_ are pigment-producing cells in the epidermis.
  - Melanocytes
4. Eyebrow hairs are always shorter than hairs on your head because \_\_\_\_\_.
  - eyebrow follicles are only active for a few months
5. Which of the following can be described as cuts made diagonally between the horizontal and the vertical planes?
  - Oblique sections
6. Which directional term is used to describe the relationship of the skin relative to the skeletal muscles?
  - Superficial
7. A surgeon removed a section of tissue along a transverse plane for microscopic examination. What are two names that correctly identify this section?
  - Cross section of transverse section
8. The anatomical position is characterized by all of the following *except* \_\_\_\_\_.
  - Palms turned posteriorly
9. Which of the following is *incorrectly* paired?
  - Tactile cells: anchor the skin to the body
10. In thick skin, you would expect the \_\_\_\_\_ to be more prominent than it is in thin skin.
  - Stratum lucidum
11. Which layer of the epidermis is responsible for regenerating the most superficial layers?
  - Stratum basale
12. Albinos commonly contract skin cancer. What seems to be the reason, and what can be done to reduce the risk of skin cancer?
  - Albinos lack melanin and have thus lost their main defense against the damaging UV light that can cause skin cancer. They can cover all body areas and avoid bright sunlight.
13. The 68-year-old patient was admitted to the hospital medical floor with a diagnosis of chronic bronchitis. His wife asks the nurse why his skin looks blue. How would you explain cyanosis to this patient and his wife?
  - Cyanosis is a dusky bluish or grayish discoloration of the skin and mucous membranes that occurs with reduced oxygen levels.
14. The dermis is rich in blood vessels and nerve fibers.
  - True
15. Which skin appendages aid in cooling the skin when the body temperature or the external environmental temperature is high?
  - Eccrine sweat glands

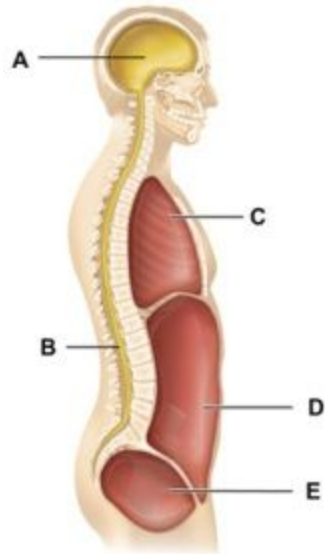
16. The most common type of skin cancer is:
- Basal cell carcinoma
17. The major regions of a hair shaft include all of the following *except* \_\_\_\_\_.
- External root sheath
18. The composition of the secretions of the eccrine glands is \_\_\_\_\_.
- 99% water, sodium chloride, trace amounts of wastes, and vitamin C
19. Male pattern baldness has a genetic switch that turns on in response to \_\_\_\_\_.
- Male hormones
20. We are told that every surface we touch is teeming with bacterial cells, and bacteria are found in the pools we swim in, the water we wash with, and on the hands of friends. Why are we not inundated with bacterial infections on our skin?
- -not all bacteria are harmful to, or thrive on skin
  - -the low pH of skin secretions retard the multiplication of bacteria on the skin
  - -many bacteria are killed by bactericidal substances in sweat
21. Susan sat out in the sun watching a baseball game. She developed small blisters on her unprotected shoulders and neck. What type of burn is represented by the formation of the blisters?
- Second degree burn
22. Which type of cartilage covers and protects the ends of bones at freely moveable joints?
- Hyaline cartilage
23. Bones do NOT have a role in \_\_\_\_\_.
- glycogen production



24. Osteoclasts \_\_\_\_\_.
- Break down bone
25. The notable hardness of bone is attributed to \_\_\_\_\_.

- The exceptional hardness of bone, which allows it to resist compression, is attributed to the presence of mineral salts called hydroxyapatites. The hydroxyapatites, mainly calcium phosphates, form the inorganic matrix of bone.
  - the presence of inorganic hydroxyapatites
26. The epiphyseal plate is \_\_\_\_\_.
- Where long bone lengthening occurs
27. The canal that runs through the core of each osteon (the Haversian canal) is the site of \_\_\_\_\_.
- Blood vessels and nerve fibres
28. The periosteum is a tissue that serves only to protect the bone because it is not supplied with nerves or blood vessels.
- False
29. During bone growth, which event is most significant at the surface indicated by the letter A?
- Cartilage matrix expansion
30. Which of the following is UNLIKELY to affect bone remodeling?
- Glucagon
31. What indicates that a long bone has reached its adult length?
- closure of the epiphyseal plate
32. What tissue forms the model for endochondral ossification?
- Cartilage
33. Cranial bones develop \_\_\_\_\_.
- within fibrous membranes
34. Which of the following refers to a bone disorder found most often in the aged and resulting in the bones becoming porous and light?
- Osteoporosis
35. Choose the FALSE statement.
- Long bones include all limb bones except the patella.
36. Which bone cells form bone?
- Osteoblasts
37. Which of the following is a correct pairing of a body cavity with its contents?
- The cavity at C contains the lungs





- 
- 38. A small family was traveling in its van and had a minor accident. The children in the back seats were wearing lap belts, but still sustained numerous bruises about the abdomen, and had some internal organ injuries. Why is this area more vulnerable to damage than others?
  - The abdominal organs are not protected by a bony covering.
- 39. In which quadrant of the abdominopelvic cavity is the stomach located?
  - Left upper quadrant
- 40. Which body cavity is further separated into other cavities?
  - Thoracic
- 41. The right hypochondriac region contains the majority of the stomach.
  - False
- 42. The epigastric region is superior to the umbilical region.
  - true

