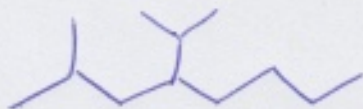
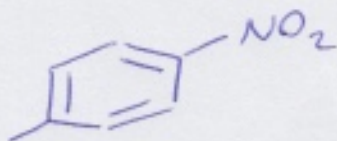


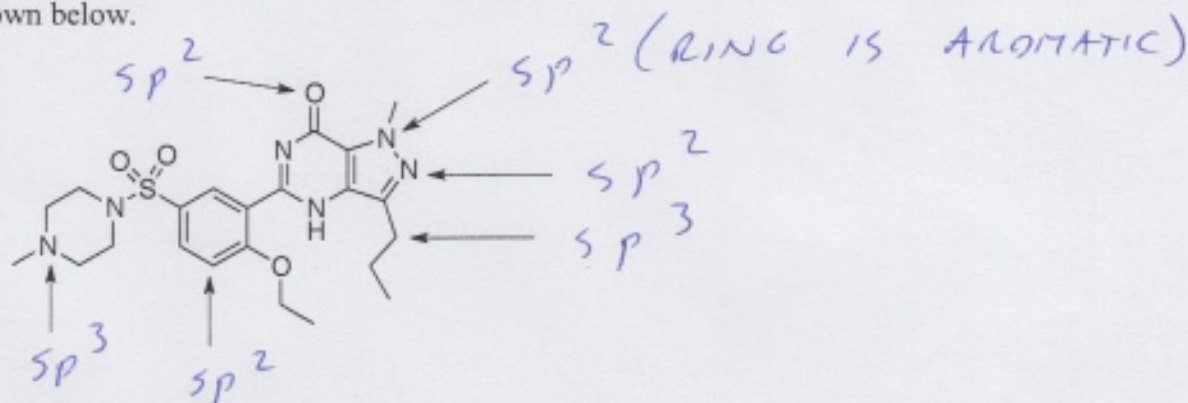
1. Draw 2-methyl-4-(1-methylethyl)octane



2. Draw para-nitrotoluene



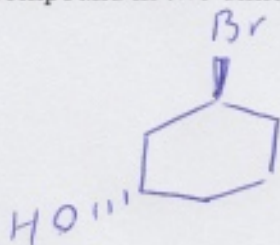
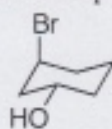
3. Identify the hybridization of each of the indicated atoms in viagra, an erectile dysfunction drug, shown below.



4.

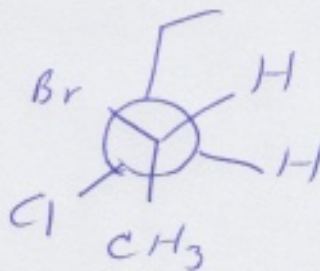
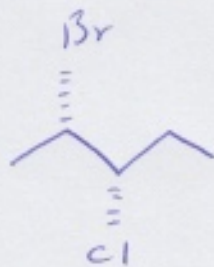
a. Draw the following compound in two dimensions.

b. Name the compound

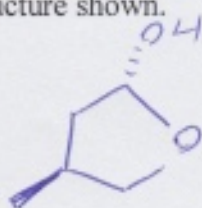
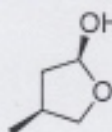


(1S,3S)-3-BROMOCYCLO-
HEXANOL

5. Draw (2S,2S)-2-bromo-3-chloropentane in a Newman projection (staggered conformation) looking down the C2-C3 bond.



6. Draw a diastereomer of the structure shown.



OR

