

Security

Question 1

0 / 1 point

Which of these files, if created, prevents login by all non-root users?

- /sbin/nologin
- /etc/nologin
- /etc/passwd
- /etc/issue
- /etc/motd

Linux GUI components


Question 2

0 / 1 point

Where could you click to immediately see who you are logged in as?



1 (3)

1. Places ▾
2. Applications ▾
3.  ▾
4. Fri 12:24

Question 3

0 / 1 point

Where can you click to access a list of utility programs?



1 (2)

1. Places ▾
2. Applications ▾
3. 1 / 4
4. Fri 12:24

Question 4

0 / 1 point

Where can you click to change the screen contrast?



1 (4)

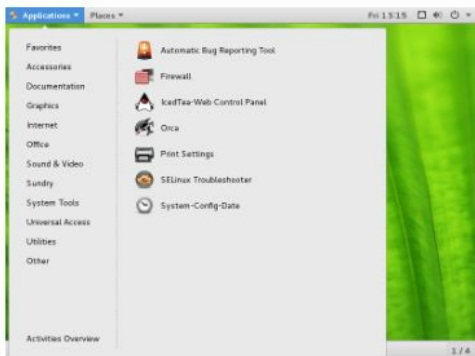
1. 
2. 
3.  CentOS
4. 

Question 5

0 / 1 point

Where should you click if you want to configure CentOS 7 to generate speech and braille output for a visually impaired user?

✘ 1 (3)



- 1. SELinux Troubleshooter
- 2. Automatic Bug Reporting Tool
- 3. Orca
- 4. Firewall

Question 6

0 / 1 point

Choose the image that depicts the top panel in the image below.

✘ 1 (2)



- 1.
- 2.
- 3.
- 4.

Question 7

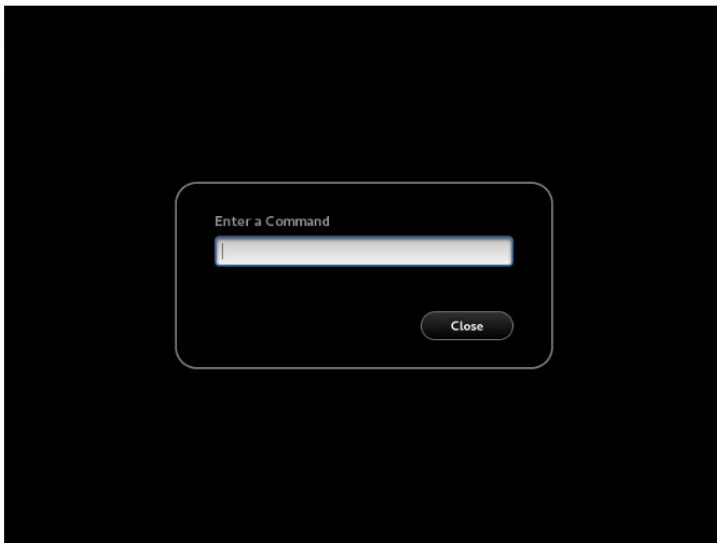
0 / 1 point

Where can you click to change workspaces?

✘ 1 (3)



- 1.
- 2.
- 3.
- 4.



To bring up the screen shown above, you should press the ALT key and the _____ key at the same time.

Answer: ? (F2)

Question 9

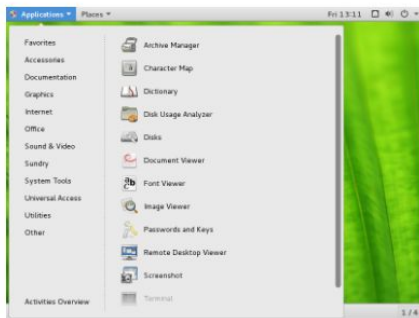
You can copy/paste text from a terminal emulator using CTRL-C and CTRL-V

True
 False

Question 10

Where should you click to establish a graphical session with a different physical workstation?

1

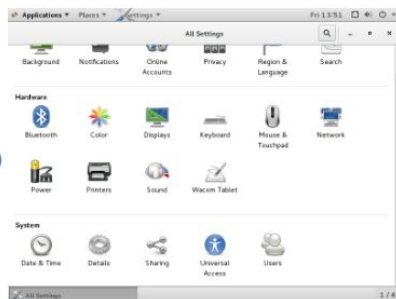


1. Remote Desktop Viewer
2. Disk Usage Analyzer
3. Image Viewer
4. Password and Keys

Question 11

What application should you run to enable others to view what is on your screen?

1 (4)



1. Universal Access
2. Network
3. Details
4. Sharing

Question 12

0 / 1 point

Where should you click to enable or disable location services?

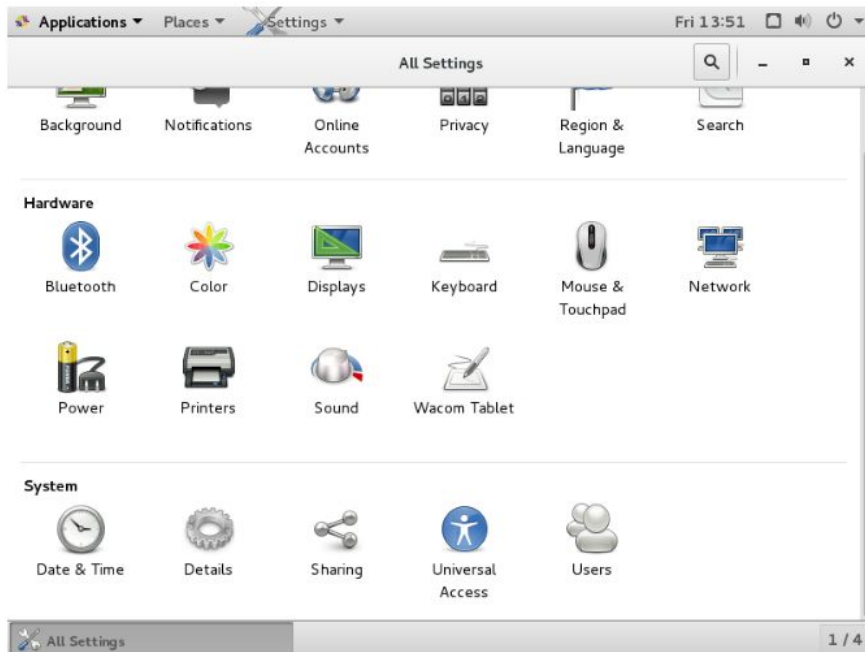
✘ 1 (4)



1. Universal Access
2. Network
3. Details
4. Privacy

Question 13

0 / 1 point



What command can you type at the command line to launch the "All Settings" window seen above?

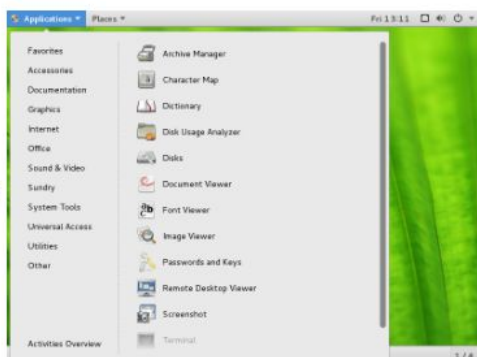
Answer: ? ✘ (gnome-control-center, sudo gnome-control-center)

Question 14

0 / 1 point

Where can you click to display a menu which includes access to print settings?

✘ 1 (4)



1. Other
2. System Tools
3. Utilities
4. Sundry

Question 15

1 / 1 point

Click on the utility which would be most useful if you want to delete some old files to free up space.

✓ 1



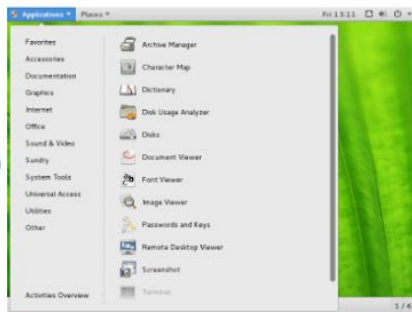
1. Disk Usage Analyzer
2. Disks
3. Document Viewer
4. Archive Manager

Question 16

0 / 1 point

Where should you click to view installed certificates?

✗ 1 (4)



1. Character Map
2. Disk Usage Analyzer
3. Document Viewer
4. Password and Keys

Question 17

0 / 1 point

What application should you run to enable graphical remote access?

✗ 1 (4)



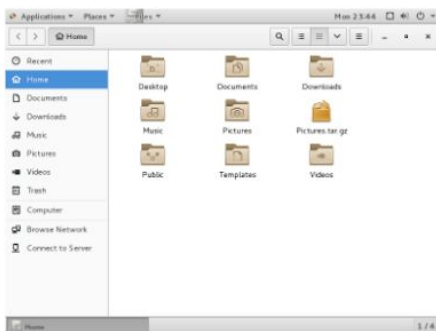
1. Universal Access
2. Network
3. Details
4. Sharing

Question 18

1 / 1 point

Where can you left-click to display an option to create a new tab in the 'Nautilus' file browser?

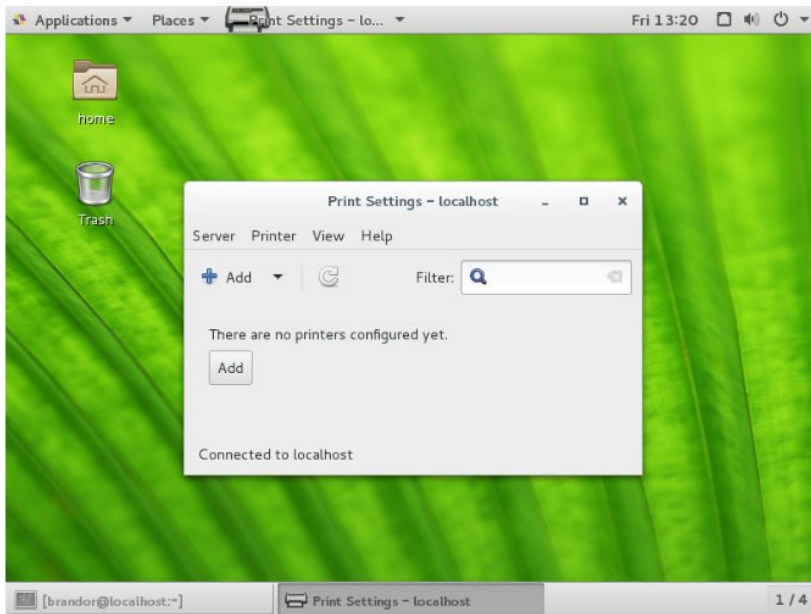
✓ 2



1. 
2. 
3. 
4. 

Question 19

0 / 1 point



What command can you issue at the command line to open the "Print Settings"

Answer: ? (system-config-printer)

Question 20

1 / 1 point

Where should you click if you need help?

✓ 2



1. Places ▾
2. Applications ▾
3. 1 / 4
4. Fri 12:24

Question 21

1 / 1 point

Where should you click in order to configure a different keyboard layout?

✓ 2



1. Keyboard
2. Region and Language
3. Wacom Tablet
4. Network

Users and Groups

Question 22

0 / 1 point

Which of these utilities will display the message "This account is currently not available."

- issue
- userdel
- passwd
- nologin

Question 23

0 / 1 point

A new home directory is populated with the contents of _____ .

- /home
- /etc/skel
- ~
- /skel
- /etc/home

Question 24

0 / 1 point

What are the default permissions for a file created with the 'user' account?

- the 'user' account and accounts in the 'user' group can read, write and execute. Other non-root accounts have no access.
- read and write for non-root accounts
- read-only for non-root accounts
- read and write for the 'user' account and accounts in the 'user' group, but read-only for other non-root accounts
- the 'user' account and accounts in the 'user' group can read, write and execute. Other non-root accounts can only read and execute the file.

Question 25

0 / 1 point

Which command can you use to add a group?

- /etc/group
- usermod
- groupadd
- gpasswd
- addgroup

Question 26

0 / 1 point

If the following line exists in the /etc/passwd file

```
ftp:x:14:50:FTP User:/var/ftp:/sbin/nologin
```

What is the home directory of the ftp user?

Answer: ? (/var/ftp)

Question 27

0 / 1 point

Which file contains a list of groups?

- /etc/shadow
- /etc/chgrp
- /etc/passwd
- /etc/chown
- /etc/group

Question 28

0 / 1 point

Which file contains a list of shells used by different user accounts?

- /etc/chown
- /etc/passwd
- /etc/group
- /etc/shadow
- /etc/chgrp

Review of Linux**Question 29**

0 / 1 point

Which command will display your current directory?

- history
- pwd
- source
- echo
- set

Question 30

0 / 1 point

How many lines does the file `/etc/services` have?

Answer: ? (11176)

Question 31

0 / 1 point

What command can you use to become the root user?

- chown root
- elevate
- su root
- su
- machinectl enable

Question 32

0 / 1 point

What mount option is used when the root filesystem is mounted at boot?

Answer: ? (noatime)

Question 33

0 / 1 point

What command can you use to display a list of commands you have previously used?

- dmesg
- history
- cat .history
- cat /var/log/commands
- journalctl

Question 34

0 / 1 point

Which command will display the first five lines of the `/etc/passwd` file?

- tail /etc/passwd
- head /etc/passwd
- head -5 /etc/passwd
- tail -5 /etc/passwd
- five /etc/passwd

Question 35

0 / 1 point

Which command is used to change file permissions?

- chown
- chgrp
- chmod
- chage
- chset

Question 36

0 / 1 point

Which command will display commands you have previously entered?

- shopt
- source
- history
- unset
- alias

systemd**Question 37**

0 / 1 point

Which command displays only kernel messages from the last boot?

- journalctl | grep dmesg
- journalctl -u sysinit
- journalctl -t sysinit
- journalctl
- journalctl -k -b

Question 38

1 / 1 point

The messages that you see after removing the boot parameters *rhgb* and *quiet* appear in the file */var/log/messages*.

- 1) True
- 2) False

Question 39

0 / 1 point

Question: What command name did you use to locate the grub2-mkconfig script?

Answer: ? (whereis, find, locate, which, ls)

Question 40

0 / 1 point

What command can you use to disable the GUI in CentOS 7?

- stopx
- systemctl isolate multi-user.target
- systemctl isolate graphical.target
- systemctl stop graphical.target
- systemctl start multi-user.target

Question 41

1 / 1 point

Which command would you use to ensure that the 'httpd' service starts when the system boots?

- systemctl enable httpd.service
- systemctl httpd --type service
- systemctl start httpd.service
- service httpd start

Question 42

0 / 1 point

Display the `/etc/os-release` file to view information on the Linux distribution you are using. The `VERSION_ID` is _____, the `HOME_URL` is _____.

Answer for blank # 1: ? ✘ (7, "7")

Answer for blank # 2: ? ✘ ("https://www.centos.org/", https://www.centos.org/, https://www.centos.org)

Question 43

0 / 1 point

Configure your system to boot into *multi-user* mode by executing the command `systemctl set-default multi-user.target`.

Note that this deletes the existing *default.target* and then creates a new default by linking the `/etc/systemd/system/default.target` to the *multi-user.target* file.

Confirm that your system boots into CLI mode by rebooting your system.

Is *multi-user* mode the same thing as *emergency* mode?

- ✘ True
⇒ False

Question 44

0 / 1 point

What is the basename of the kernel which is booted by the boot loader?

- ✘ boot
⇒ vmlinuz
 kernel
 grub2

Question 45

0 / 1 point

Use the `uname -r` command to identify which kernel you are currently running. Paste the output here.

NOTE: This information is also available via the command `cat /proc/version`.

Answer: ? ✘ (3.10.0-862.11.6.el7.x86_64)

Question 46

0 / 1 point

Which file contains detailed information on the installed Linux distribution?

- ✘ /proc/os-release
 /proc/mdstat
⇒ /etc/os-release
 /etc/default/grub
 /etc/mdstat

Question 47

1 / 1 point

What command can you use to generate the configuration file for GRUB2?

- ✓ grub2-mkconfig
 grub2-install
 boot-config
 mkconfig
 grub-install

Question 48

1 / 1 point

The boot messages that you see after removing the boot parameters *rhgb* and *quiet* also appear in the `/var/log/dmesg` file.

- ✓ 1) True
 2) False

Question 49 0 / 1 point

Which command could you use to determine which distribution of Linux you are using?

- `uname`
- `cat /etc/os-release`
- `cat /etc/distro`
- `uname -r`
- `lsb_release`

Question 50 0 / 1 point

The messages that you see after removing the boot parameters `rhgb` and `quiet` cannot be viewed using the `journalctl` command.

- 1) True
- 2) False

Question 51 0 / 1 point

The first systemd command we will run is `systemd-analyze`. This command will display how long it took the operating system to start.

What is the total time your system required to boot?

Answer: ? `/([\d*\.\d*])/([\d*]/)`

Question 52 0 / 1 point

Log in to your user account. You can see a list of possible targets that can be selected by executing the command `systemctl list-unit-files -t target`.

How many targets are there?

Answer: ? `(64)`

Question 53 1 / 1 point

What command can you use to list what units must be started before the GUI can be started?

- `systemctl list-dependencies graphical.target`
- `systemctl list-dependencies multi-user.target`
- `systemctl show-dependencies graphical.target`
- `systemctl isolate multi-user.target`
- `systemctl show-dependencies multi-user.target`

Question 54 1 / 1 point

Which of the following commands will print the kernel release?

- `uname -r`
- `vgdisplay`
- `mdadm`
- `systemctl --version`
- `cat /sys/fs/selinux`

Question 55 0 / 1 point

What type of software is GRUB2?

- system optimizer
- process launcher
- boot loader
- BIOS
- MBR

Question 56 1 / 1 point

'logind' is correctly referred to as a _____ program.

- daemon
- authorization
- plugin
- demon
- utility

Question 57

0 / 1 point

Which command is used to view 'systemd' logs?

- dmesg
- journalctl
- cat /var/log/messages
- logctl
- systemctl show-log

Question 58

0 / 1 point

What is the absolute path to the kernel file which is specified by the default entry in the GRUB2 menu?

Answer: ? (/boot/vmlinuz-3.10.0-862.11.6.el7.x86_64, /boot, /boot/)

Question 59

0 / 1 point

The default target is specified by the file `/etc/systemd/system/default.target`. Examine this file. Note that it is a symlink to `/lib/systemd/system/graphical.target`. Take a look at the contents of this file using `less`. When you are done, exit `less`.

You can change the system's current target at the command line using the `systemctl` command.

Run this command as root:

```
systemctl isolate multi-user.target
```

What happened?

?

This question has not been graded.

The correct answer is not displayed for Written Response type questions.

Question 60

0 / 1 point

Which of the following specifies which services will start at boot?

- basic.target
- graphical.target
- default.target
- multi-user.target
- sysinit.target

Question 61

0 / 1 point

Based on VMware's default configuration, which of the following would be the first place that the BIOS would look for bootstrap code?

- Hard drive
- External USB drive
- DVD
- Network

[View Feedback](#)

Question 62

0 / 1 point

What command would list any kernel modules currently in use?

- xprobe
- lspci
- lsvid
- lsmod
- modprobe

Question 63

0 / 1 point

`systemd` uses a default target which specifies the desired final state of the system. One way you can find out what the default target is, is by executing the command `systemctl get-default`. Execute the command and copy the output here.

Answer: ? (graphical.target, graphical)

Question 64

0 / 1 point

Which of the following commands will analyze system boot-up performance?

- top
- uptime
- vmstat
- systemctl
- systemd-analyze

Question 65

0 / 1 point

Log into the command line as root. Run the following command:

```
systemctl isolate graphical.target
```

What happens?

?

This question has not been graded.

The correct answer is not displayed for Written Response type questions.

Question 66

1 / 1 point

The messages that you see after removing the boot parameters `rhgb` and `quiet` also appear in the output of the `dmesg` command.

- 1) True
- 2) False

Question 67

0 / 1 point

Which command can be used to view kernel log messages?

- kmesg
- journald
- logger
- dmesg
- logmsg

Question 68

0 / 1 point

What command can you use to configure CentOS 7 to load the graphical user interface at boot?

Answer: ? (systemctl set-default graphical, systemctl set-default graphical.target)

Installing Software**Question 69**

0 / 1 point

What is the path to the configuration file for the package manager in CentOS 7?

- /etc/ld.so.conf
- /etc/mdadm.conf
- /etc/rsyslog.conf
- /etc/yum.conf
- /etc/logrotate.conf

Question 70

0 / 1 point

What command can you use to list all of the files in an installed package?

- yum
- menu.lst
- ls
- rpm
- export

Question 71

0 / 1 point

Which command should you use to install and remove packages in CentOS 7?

- tar
- apt-get
- wget
- yum
- aptitude

Networking**Question 72**

0 / 1 point

Which of the following files would be the network configuration file for the `wlp0s20u14` network interface?

- wlp0s20u14.lease
- ifdown-wlp0s20u14
- /etc/wlp0s20u14
- ifcfg-wlp0s20u14
- ifup-wlp0s20u14

Question 73

0 / 1 point

Which of the following determines network and broadcast addresses for interfaces configured in the 'network-scripts' directory?

- ifconfig
- ifdown
- ifup
- ipcalc
- ifcfg

Question 74

0 / 1 point

What is the full command to change your network interface 'eno1677736' to the IP address '10.5.4.100' with subnet mask of '/26' ?

- ip addr add 10.5.4.100 255.255.255.192 dev eno1677736
- ip addr 10.5.4.100/26 dev eno1677736
- ip add 10.5.4.100/26 dev eno1677736
- ip addr add 10.5.4.100/26 dev eno1677736
- ip addr add 10.5.4.100 255.255.255.128 dev eno1677736

Question 75

0 / 1 point

Which directory would a configuration file named `ifcfg-eno777365` be stored in?

- /sys
- NetworkManager
- /dev
- network-scripts
- /run

Question 76

0 / 1 point

Which of these utilities can help you discover all the network hops between the system you are on and a destination host on the Internet?

- route
- ping
- tracepath
- ip
- ifconfig

Question 77

0 / 1 point

Which utility could you use to find the IP address associated with the web server `www.distrowatch.com`?

- ip
- route
- ipcalc
- host

Question 78

0 / 1 point

Which utility could you use to find the IP address associated with the web server `www.algonquincollege.com`?

- ss
- ipcalc
- dig
- route
- ip

Question 79

0 / 1 point

Which local file binds a hostname to an IP address to allow local name resolution?

- /etc/hostname
- /etc/mtab
- /etc/resolv.conf
- /etc/motd
- /etc/hosts

Question 80

0 / 1 point

What command could you use to display listening TCP ports on a Linux system?

- ip
- ss
- ping
- ports
- dig

Question 81

0 / 1 point

A host with address 17.18.19.20 is not reachable (the host SHOULD be reachable). You use the `'ping'` command to check connectivity:

```
-----  
[root@Venus ~]# ping -c 2 17.18.19.20  
PING 17.18.19.20 (17.18.19.20) 56(84) bytes of data.  
^C  
--- 17.18.19.20 ping statistics ---  
2 packets transmitted, 0 received, 100% packet loss, time 2000ms  
-----
```

What would be your next step to troubleshoot the problem?

- Use the `'dig'` command to use UDP packets to test connectivity.
- Use the `'traceroute'` command to determine which hop is dropping ICMP packets.
- Use the `'ss'` command to confirm that the security settings of the firewall are allowing traffic.
- Use the `'host'` command to look up the domain associated with this IP address.
- Use the `'ip'` command to confirm that your local interface has an IP address