

BPS1101**Sample Final Exam (Answers in red)**

(This sample exam contains 50 sample questions. Actual exams will contain approximately 120 actual questions)

1. What is the basis of the doctrine of signatures?
 - a. Properly rebalancing the human body will cure disease states
 - b. Experiment and observation can identify the proper use of plants and animals
 - c. Things in the world are “encoded” with clues as to their purpose
 - d. Trial and error is the best way to identify cures

2. Why are all-in-one cold medications a poor choice to treat a cold?
 - a. They contain too many synthetic ingredients
 - b. Some ingredients reduce the effectiveness of the immune system
 - c. Many ingredients interfere with each other
 - d. They are overly expensive

3. What is a counter-indication?
 - a. A condition for which a medication may be used
 - b. A condition for which a medication should not be used
 - c. A secondary effect or side effect of a medication
 - d. A condition that cannot be treated with a medication

4. What is trepanation?
 - a. Cutting a hole in the skull
 - b. Ringing in the ears
 - c. A psychiatric disturbance
 - d. Fear about something that may happen

5. Which of the following herbal remedies makes a poor combination with Tylenol (acetaminophen)?
 - a. Ginkgo
 - b. Cold FX
 - c. Garlic
 - d. St. John's wort

6. The most common cause of cancer is
 - a. Pesticide residues on food
 - b. Food additives
 - c. Tobacco
 - d. Viral infections

7. Testing athletes for steroid use is performed using a GC/MS (gas chromatograph/mass spectrometer). How does this instrument work?
 - a. The GC sorts molecules that are then weighed by the MS
 - b. The MS sorts molecules that are then weighed by the GC
 - c. The GC weighs molecules that are then sorted by the MS
 - d. The MS weighs molecules that are then sorted by the GC

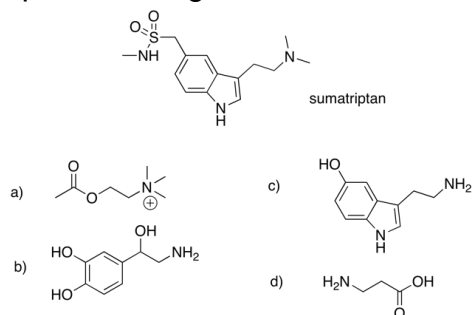
8. Which of the following drugs killed 18 cyclists during 1987 to 1989?

- a. erythropoietin (EPO)
- b. amphetamines
- c. anabolic steroids
- d. diuretics

9. Aspirin is considered to be a stomach irritant because

- a. It increases the production of mucus and increases the production of acid
- b. It increases the production of mucus and decreases the production of acid
- c. It decreases the production of mucus and increases the production of acid
- d. It decreases the production of mucus and decreases the production of acid

10. Sumatriptan is an agonist of which of the following neurotransmitters?



(c)

11. Which one of the following does **NOT** cause toxic headaches?

- a. aged cheese containing tyramine
- b. red wines containing histamines
- c. processed foods containing MSG
- d. ice cream containing vanillin

12. What do antibodies stick to?

- a. Epitopes
- b. Allosterics
- c. Agostic sites
- d. Leukocytes

13. What does a human cell use to signal to the immune system that it is infected with a virus?

- a. CD28 receptor
- b. MHC receptor
- c. IgV receptor
- d. Acetylcholine receptor

14. Why are purified drugs safer than extracts?

- a. Natural-source drugs are highly unstable and decompose in the extract
- b. Doses can be controlled more precisely using purified materials
- c. Some extracts contain toxic materials that can produce serious side effects
- d. Herbal remedies are not effective

15. Which of the following represents a better deal?
- Regular Motrin (200 mg ibuprofen each tablet) at \$11.99 for a box of 50
 - Regular Advil (200 mg ibuprofen each tablet) at \$23.99 for a box of 100
 - ACME brand ibuprofen (200 mg each tablet) at \$7.99 for a box of 25
 - OGILVIE brand ibuprofen (200 mg ibuprofen each tablet) at \$9.99 for a box of 250**
16. Which of the following foods probably contains MSG?
- Caesar salad
 - Whole wheat bread
 - Canned spaghetti sauce**
 - Pasteurized milk
17. Which of the following was highly profitable for the drug industry because of illegal use?
- Methamphetamine**
 - Ecstasy
 - Demerol
 - Fentanyl
18. What is a teratogen?
- Substance causing teratogenesis
 - Substance causing mutations
 - Substance that enhances flavor
 - Substance causing birth defects**
19. What is the major reason why industrial chemicals are dangerous?
- They are more toxic than natural substances
 - The body cannot metabolize synthetics very effectively
 - Industrial chemicals are produced in very large quantities**
 - Industrial chemicals accumulate in the body
20. Which drug can be used to make explosives?
- Acetaminophen
 - Acetylsalicylic acid**
 - Pseudoephedrine
 - Dextromethorphan
21. What is the most common side effect of first generation antihistamines?
- Suppress appetite
 - Drowsiness**
 - Constipation
 - Shortness of breath

22. What potentially serious side effect is associated with asthma inhalers?
- Anaphylaxis
 - Persistent lung infections
 - Bronchial tissue damage
 - Heart attack
23. What is the most common side effect of metal heart valve replacement?
- Immune rejection
 - Clicking sound
 - Periodic replacement required
 - Urge to find Sarah Connor
24. According to Health Canada, how much salt should the average person consume each day?
- 1000 – 1500 mg
 - 3000 – 3400 mg
 - Less than 1000 mg
 - More than 3400 mg
25. Which blood pressure regulatory system can be controlled with drugs?
- Secondary
 - Primary
 - Essential
 - Baseline
26. Which of the following natural remedies is highly effective in treating congestive heart failure?
- Garlic
 - Ginkgo
 - Foxglove
 - Coenzyme Q10
27. What natural health product does Health Canada warn against taking for angina?
- Vitamin B-12
 - Arginine
 - Coenzyme Q10
 - Black Cohosh
28. Which of the following indicates an increased risk of heart attack?
- LDL/HDL ratio less than 3
 - HDL/LDL ratio less than 3
 - LDL/HDL ratio more than 5
 - HDL/LDL ratio more than 5

29. Why are vegetable oils hydrogenated by the food industry?

- a. Improve flavor of food
- b. Improve mouth feel of food
- c. Enhance nutritional value
- d. Remove impurities from oil

30. What legal loophole did Pfizer use to get fast-track FDA approval for Lipitor?

- a. Orphan Drug Act
- b. AIDS amendment
- c. Chiral switch strategy
- d. Submarine patent

31. What drugs are added to herbal incense?

- a. Designer analgesics
- b. Designer anesthetics
- c. Designer antipyretics
- d. Designer anticholinergics

32. What patent medicine was the alcoholic version of Coca-Cola?

- a. Dr. Tar and Professor Feather's Liniment
- b. Vin Mariani
- c. Snake Oil
- d. Burnett's Cocaine for Hair

33. How is cocaine converted into crack?

- a. Dissolve cocaine hydrochloride in water and add baking soda
- b. Wash cocaine hydrochloride with gasoline
- c. Wash cocaine hydrochloride with water
- d. Heat cocaine hydrochloride until it cracks

34. Which of the following is characteristic of LSD intoxication?

- a. Compliant and highly sexual
- b. Easily fall asleep
- c. Extreme aggression
- d. Sensation of flying

35. What neurotransmitter do many hallucinogens resemble?

- a. Dopamine
- b. Acetylcholine
- c. Adrenaline
- d. Serotonin

36. Bath salts are “legal” versions of what natural (but illegal) narcotic?

- a. **Khat (cathinone)**
- b. Ergot (lysergic acid)
- c. Mushrooms (psilocybin)
- d. Peyote (mescaline)

37. What “smart” drug is given to everyone in Canada, essentially without their knowledge?

- a. **Iodide**
- b. Vitamin D
- c. Lithium
- d. Fluoride

38. How large is the world market for counterfeit drugs?

- a. \$10 billion
- b. **\$75 billion**
- c. \$ 2 billion
- d. \$125 billion

39. Why do many people take saw pimento?

- a. **Benign prostate hyperplasia**
- b. Prevent colds
- c. Treat depression
- d. Better cognitive function

40. What causes garlic breath?

- a. Small pieces of garlic in your mouth
- b. Bacteria in the throat digesting garlic
- c. **Garlic chemicals in your blood**
- d. Foul smelling gases in your stomach

41. Why do some people take glucosamine supplements?

- a. Diabetes
- b. **Arthritis**
- c. Weight loss
- d. Cardiac arrhythmia

42. What substance, found in human sweat, is present in many perfumes and colognes?

- a. Skatole
- b. Bombykol
- c. **Androstenone**
- d. Oxytocin

43. What substance is released during breastfeeding and promotes mother-child bonding?
- Vasopressin
 - Dopamine
 - Oxytocin**
 - Androstenone
44. What is a substance that elicits a specific unlearned response in another member of the same species called?
- Hormone
 - Allomone
 - Pheromone**
 - Kairomone
45. How are most aphrodisiacs discovered?
- By observing the foods eaten by animals
 - By using the doctrine of humors
 - By observing the foods eaten by humans
 - By applying the doctrine of signatures**
46. What did Giles Brindley ask members of his audience to do?
- Examine his genitals
 - Touch his erection**
 - Give him an erection
 - Inject him with a drug
47. Why was Alprostadil considered a success?
- It proved that erectile dysfunction had a physical cause**
 - It established a market for scientific aphrodisiacs
 - The sales exceeded projections by a factor of 10
 - An unexpected side effect reduced heart attack risk
48. The biggest obstacles to using appropriate pain medications for those experiencing chronic pain is
- The tendency for addiction to the drugs
 - The toxicity of the drugs associated
 - Social attitudes and legal barriers**
 - The science of pain relief is not well understood
- Bonus: What is the airspeed velocity of an unladen swallow?
- It cannot be calculated from the information given
 - With the wind, three times fast as the same amount of spit
 - It depends on what kind of steroids the swallow has been given
 - What do you mean, African or European swallow?**