

Sample Exam Questions: Respiratory I

November 22
Frank Feiner, PhD, MD

Answers at end

[1] Which option correctly matches the COLUMN A entries with the COLUMN B entries?

- (A) 1-**c**, 2-**e**, 3-**b**, 4-**d**, 5-**a**
- (B) 1-**a**, 2-**d**, 3-**e**, 4-**b**, 5-**c**
- (C) 1-**b**, 2-**e**, 3-**c**, 4-**a**, 5-**d**
- (D) 1-**e**, 2-**a**, 3-**c**, 4-**d**, 5-**b**
- (E) 1-**d**, 2-**b**, 3-**c**, 4-**a**, 5-**e**

Column A:

- a** – cellular respiration
- b** – external respiration
- c** – internal respiration
- d** – pulmonary ventilation
- e** – Transport of respiratory gasses

Column B:

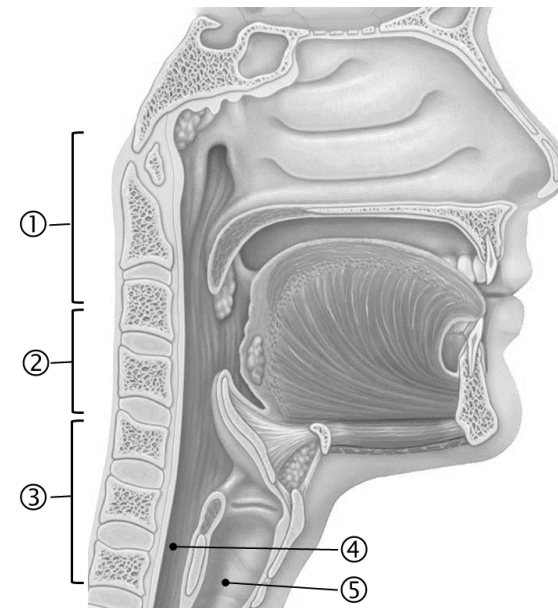
- 1** – O₂ lungs → blood/CO₂ blood → lungs
- 2** – cardiovascular system
- 3** – O₂ blood → tissues/CO₂ tissues → blood
- 4** – use of O₂/production of CO₂ by tissues
- 5** – inspiration/expiration

[2] Which option gives the correct labels for the upper respiratory system?

- (A) 1-**c**, 2-**d**, 3-**b**, 4-**a**, 5-**e**
- (B) 1-**b**, 2-**e**, 3- **a**, 4-**c**, 5-**d**
- (C) 1-**d**, 2-**c**, 3-**b**, 4-**e**, 5-**a**
- (D) 1-**e**, 2-**d**, 3-**a**, 4-**b**, 5-**c**
- (E) 1-**a**, 2-**d**, 3-**e**, 4-**c**, 5-**b**

Upper respiratory system:

- a** – esophagus
- b** – laryngopharynx
- c** – nasopharynx
- d** – oropharynx
- e** – trachea



- [3] All of the following regarding the larynx are **TRUE** EXCEPT which one?
- (A) provides a patent (open) airway
 - (B) has switching mechanism which properly routes food and air
 - (C) houses vocal cords and vocal folds
 - (D) laryngeal prominence only visible in adult women
 - (E) has 9 cartilages connected by membranes and ligaments

ANSWERS

1 – C

2 – A

3 – D