
Lab 1 – Installing Windows Server 2016

Equipment:

- Windows server 2016
- VMWare 14.0 or higher on host OS
- Textbook: *MCT Guide to Microsoft Windows Server 2016 Active Directory Configuration* ISBN 13 978-1-423-90235-1 Pre-Lab Preparation:

Read the Manual Chapter 2

Write how much time it took you to do this lab: _____Hours.

Evaluation: 10/10

Late labs: 0/10

Submission Requirements:

Do all the lab activities in Chapter 2

Use the lab configuration file on Brightspace to configure your systems

Notes:

We do not use HyperV. Use VMware.

You can install Window Server 2016 Data Centre or Window Server 2016 Standard

In VMWare we use ctrl+alt+insert not ctrl+alt+delete

Activity 2-2 we do not use HyperV. Use VMware with my configuration file on Bright Space.

Activity 2.4 and 2.6. Refers to **Ethernet** when it appears on screen as **Ethernet0**.
ETHERNET = ETHERNET0

In activity 2-6 step 9, note you can enter more than one address, the addresses need to be separated by a comma.

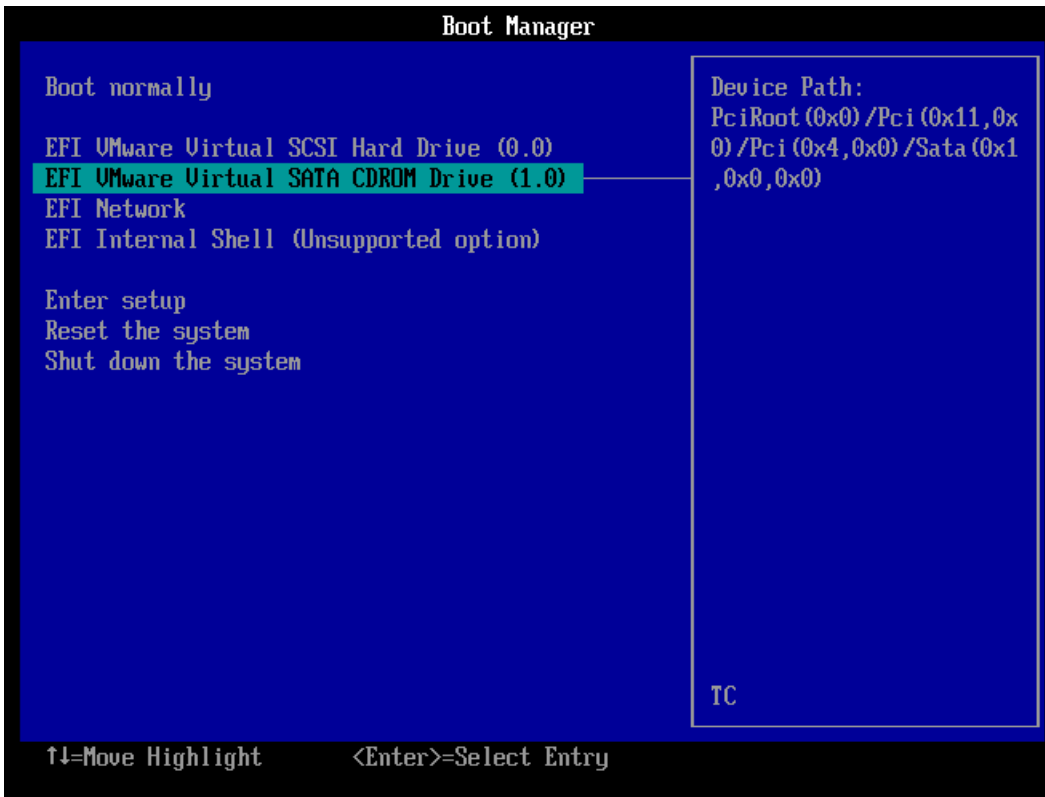
If your VM is not booting from your +ISO installation file (CD) it could be because your VM BIOS is set to boot from the network.

The message you would see is

```
Press any key to boot from CD or DVD.....
```

```
unsuccessful.  
+ EFI Network...  
>>Start PXE over IPv4._
```

Boot to your BIOS and change the setting to boot from the CDrom. It would look something like this



Depending on the model of laptop or BIOS version or VMware Version it might look a little bit different.

Activity 2- 3

%1 Take a screen shot of the system properties of the server you just installed.

Activity 2- 4

%2 Screen shot of step 3

%3 Screen shot of step 4

%4 Screen shot of step 12

%5 Screen shot of step 17

%6 Screen shot of step 24 (advance options)

Activity 2-5

%7 Screen shot of step 8

%8 Screen shot of step 11

Activity 2-6

%9 Screen shot of step 4 (tzutil /g)

%10 Screen shot of step 7

%11 Screen shot of step 11

%12 Screen shot of step 13 (ipconfig /all)