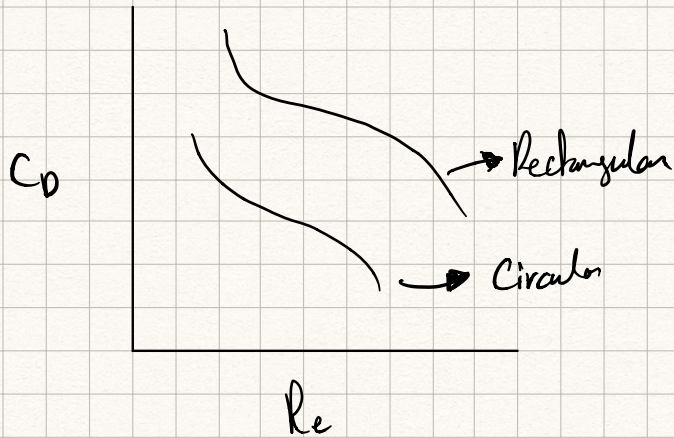


Drag and lift

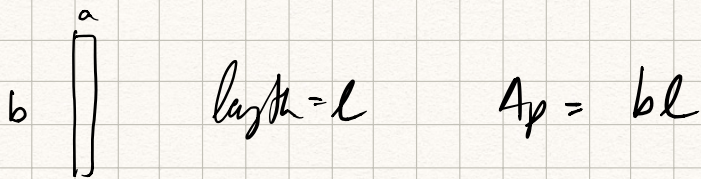
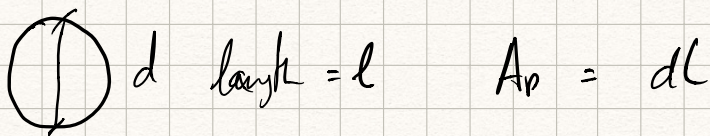
Drag force $\rightarrow \left\{ \begin{matrix} \tau \\ p \end{matrix} \right. \rightarrow \text{Complex} \rightarrow \left\{ \begin{matrix} \text{Shape} \\ \text{flow} \end{matrix} \right. \rightarrow Re$
Lift force \times



$$F_D = \left(\frac{C_D}{2} \rho v^2 \right) (A_p)$$

↓
Projected Area

Top view



① $v = \checkmark \rightarrow Re = \frac{\rho v b}{\mu} \rightarrow C_D$

