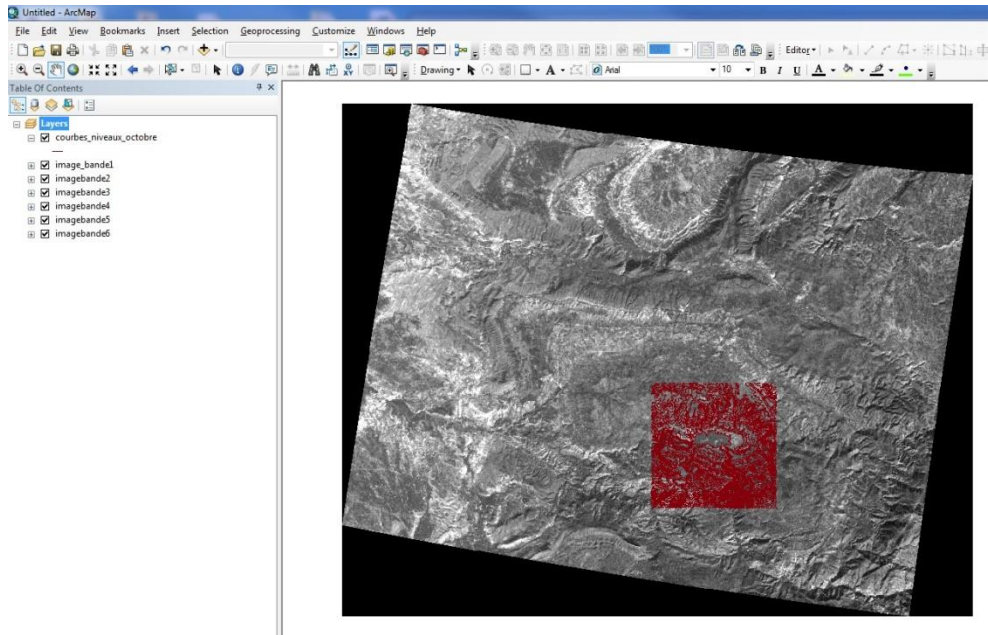
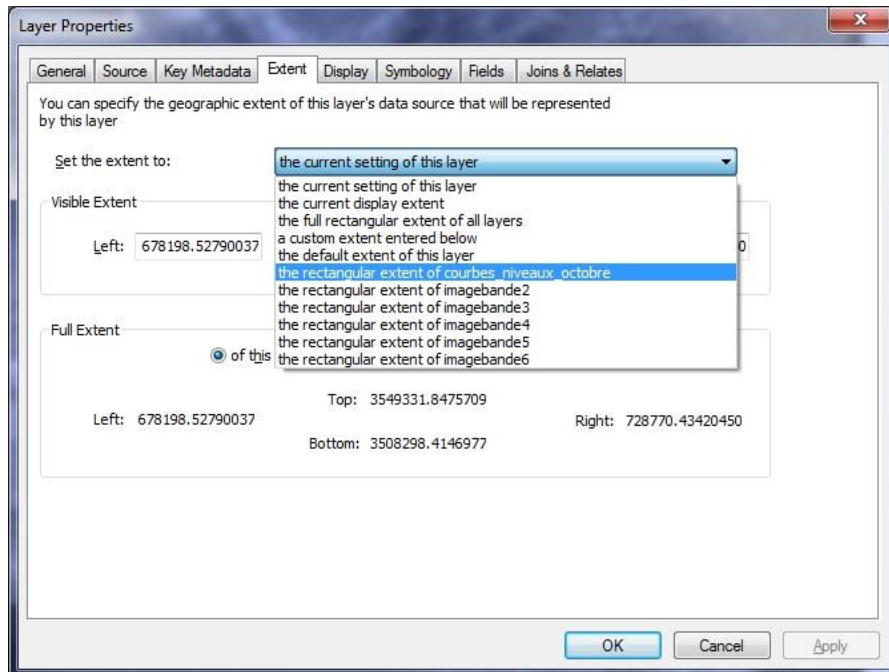


1. Open all bands and contour lines (courbes de niveaux). You will end up with this:

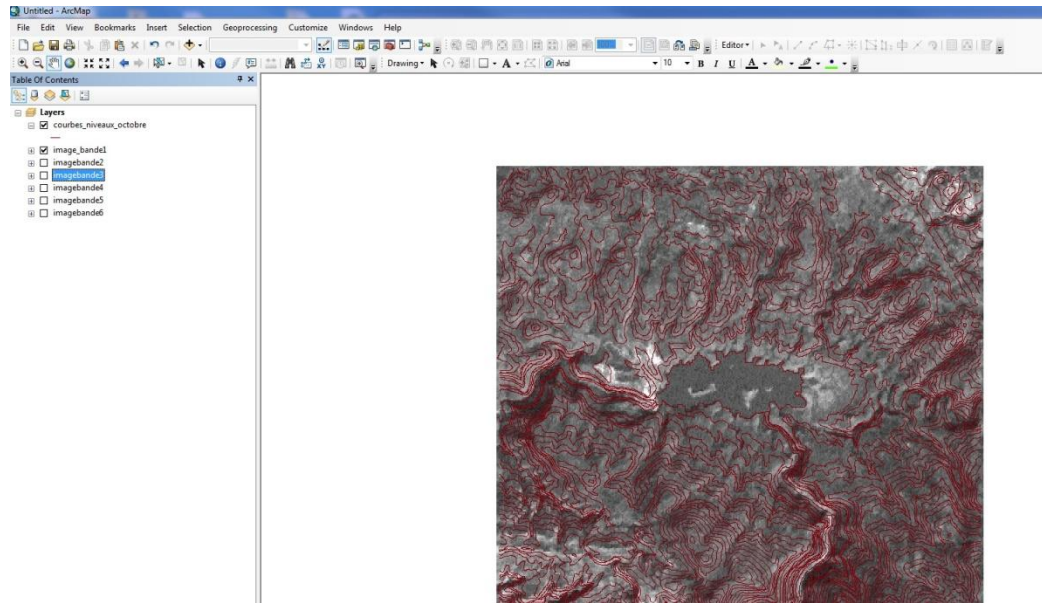


2.

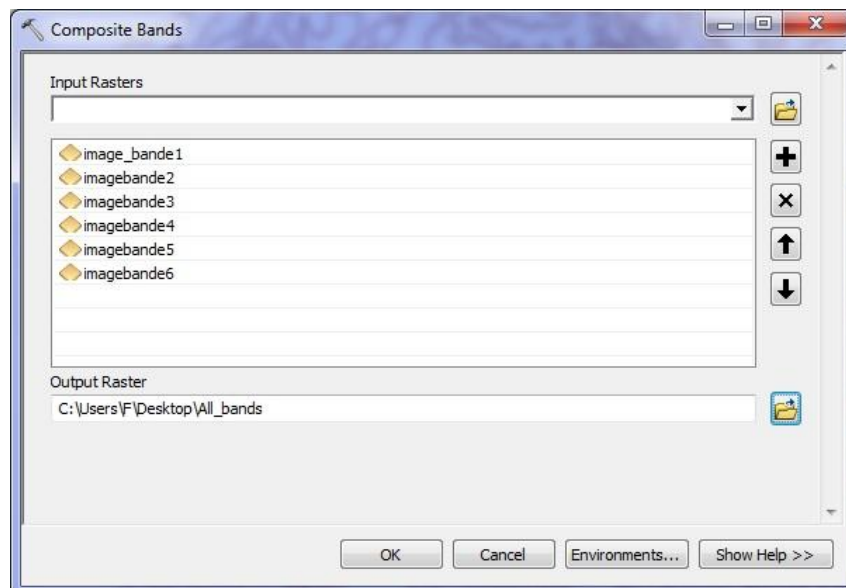
In the properties (right click on the file Table of Contents), under the Extent tab, set the extent to the same as your vector file, as such:



3. Bands 1, 2 and 3 have already been georeferenced (turn them on and off to see the difference). Continue with Georeferencing bands 4, 5 and 6.



4. Using the 'Composite Bands' tool, merge all of the bands to create one raster image.



5. Use this new raster with the contour lines to make your final map.