

What is the extinction coefficient in $1/(M \cdot cm)$ at 280 nm for the unfolded peptide with the following amino acid sequence: MKWVYTFISLLW ?

✓ Correct

12660	12
6970	3
6990	1
8480	1
12490	38
12690	1

POLL CLOSED

Select an answer to see the poll results.

What is the purity of a protein in the presence of DNA when the A260/A280 ratio equals 1.5?

- A 10% 0
- B 20% 18
- C 50% 1
- D 80% 39
- E 100% 0

What method(s) would you use to analyse 50 ng of a pure protein in solution? Choose one or more correct answers.

- | | | |
|-----------|-----------------------------------|----|
| | B Bicinchoninic Acid (BCA) | 12 |
| ✓ Correct | C Fluorescamine | 32 |
| ✓ Correct | D OPA | 44 |
| | E Lowry | 9 |
| ✓ Correct | F FQ or CBQ | 31 |

What analytical method(s) would you choose to detect and quantitate HIV antibodies in human blood?

A	Pace method	0
B	Dumas method	0
C	Scopes method	0
D	Biuret method	0
✓ Correct	E ELISA	58
		10

**What are common features between ELISA and Immunofluorescence?
Choose one or more correct answers.**

- ✓ Correct **A** Direct and indirect detection 53
- ✓ Correct **B** Antibodies 57
- ✓ Correct **C** Fluorescence for detection 23
- D** Detection of antigens on the surface of cells 30
- E** Use of enzymes to amplify a signal 11

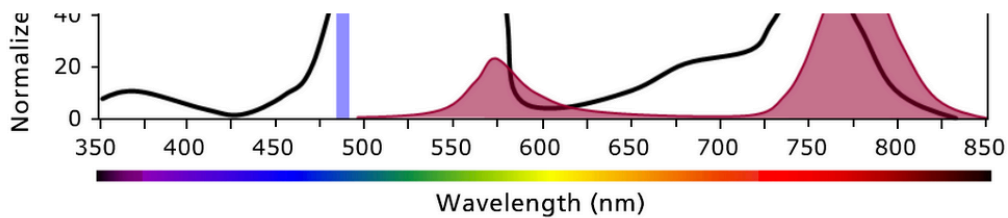
What is the purpose of a blocking step in ELISA?

- A** To remove an excess of antibodies from solution 0
- B** To stop the enzymatic reaction 0
- ✓ **Correct** **C** To prevent nonspecific binding of an antigen and antibodies to the surface of the well 58
- D** To increase speed of the analysis 0

What physical properties of cells do contribute to forward scatter (FSC) and side scatter light (SSC)? All correct answers must be selected in order to be correct.

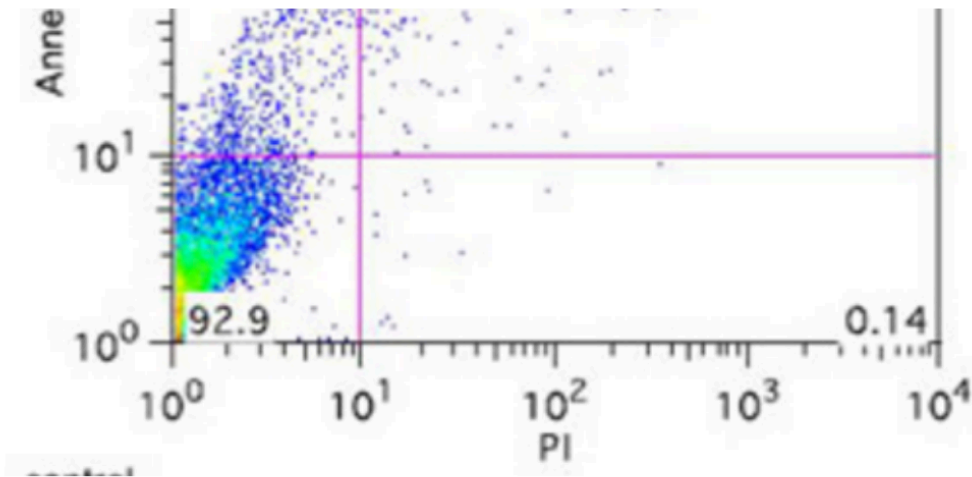
- ✓ Correct **A** Size 56
- B** Fluorescence 10
- ✓ Correct **C** Refractive Index 28
- ✓ Correct **D** Internal Complexity 57

Based on the spectra below, what is the best filter for detecting PE-Cy7 ?



- A** 488/20 nm 1
- B** 575/40 nm 2
- C** 750/20 nm 1
- ✓ Correct **D** 780/60 nm 54

What is the percentage of early apoptotic cells at the graph below?



A 92.9% 0

✓ Correct

B 4.46% 43

POLL CLOSED

To submit via SMS, text "IXNB A, B, ..." to +1 (613) 777-0647 / Text ? for help

What are the requirements for FRET? All correct answers must be selected in order to be correct.

✓ Correct

A

Strong overlap between the donor emission spectrum and the acceptor absorption spectrum

56

✓ Correct

B

Short distance (< 10 nm) between the donor and acceptor

57

C

Long distance (> 10 nm) between the donor and acceptor

0

D

Low quantum yield of the donor

1

