

CHM 1721: Module 2

Partie 1

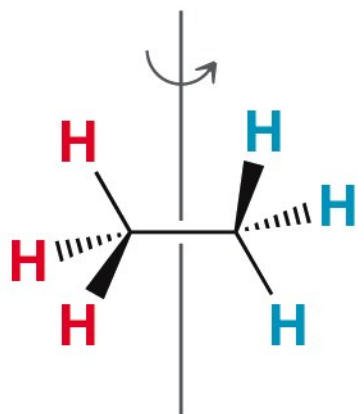
Analyse conformationnelle
Notes de cours

Analyse conformationnelle

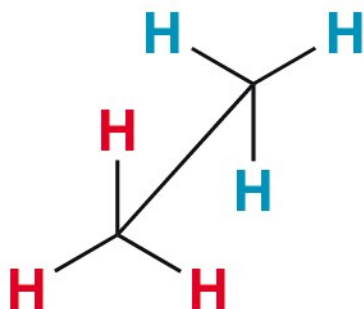
- P. ex., éthane

Projections de Newman

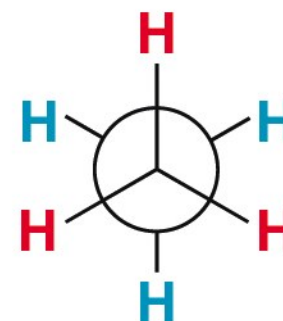
Regardez le long de l'axe C-C à partir d'une extrémité



Représentation de Cram



Formule chevalet

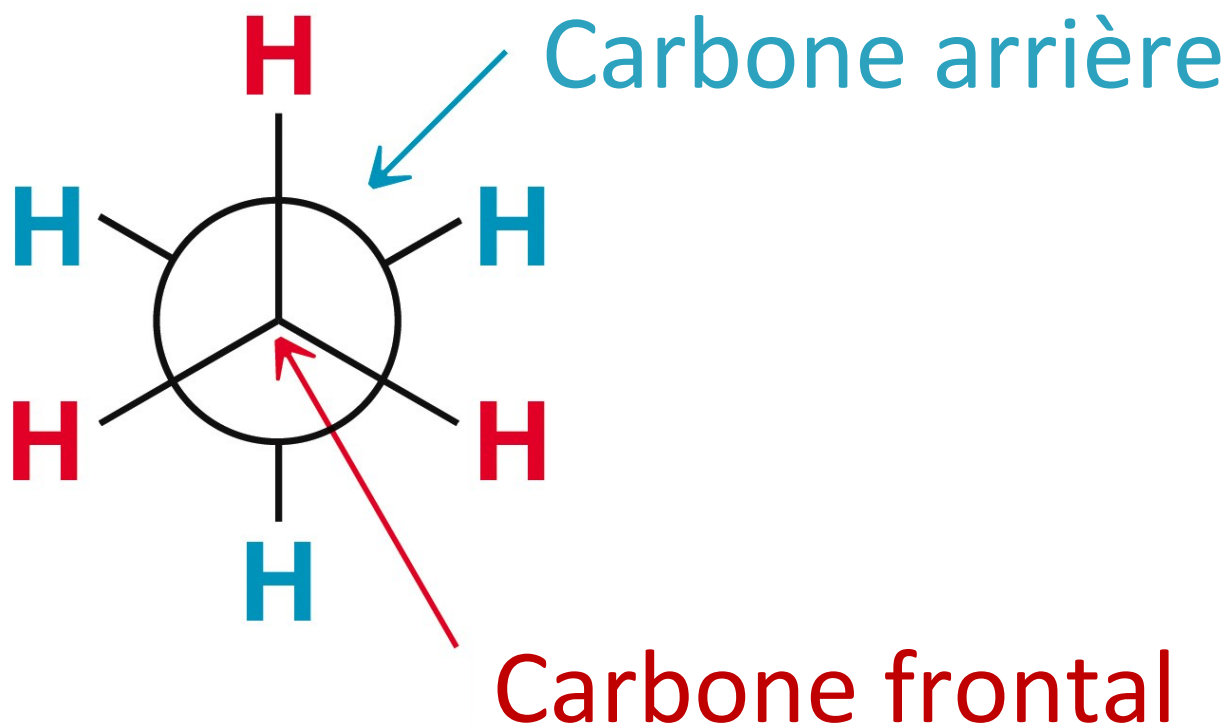


Projection de Newman

Copyright © 2012 John Wiley & Sons, Inc. All rights reserved.

Projections de Newman

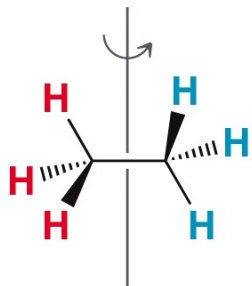
Regardez le long de l'axe C-C à partir d'une extrémité



Copyright © 2012 John Wiley & Sons, Inc. All rights reserved.

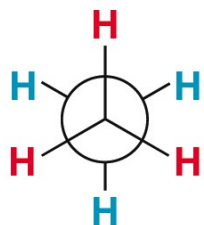
Projections de Newman

Conformations éclipsées et décalées

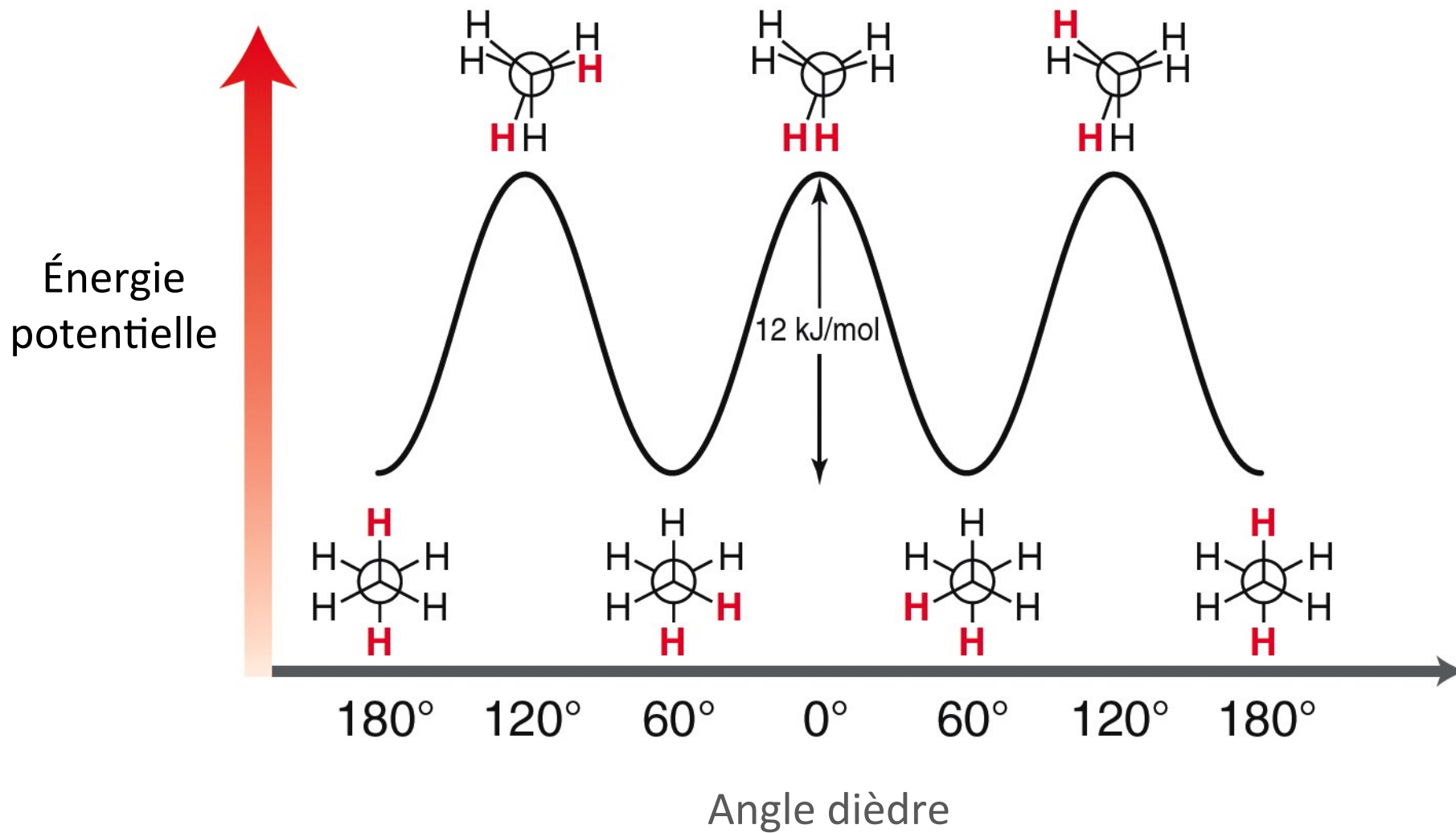


Représentation de Cram

Copyright © 2012 John Wiley & Sons, Inc. All rights reserved.

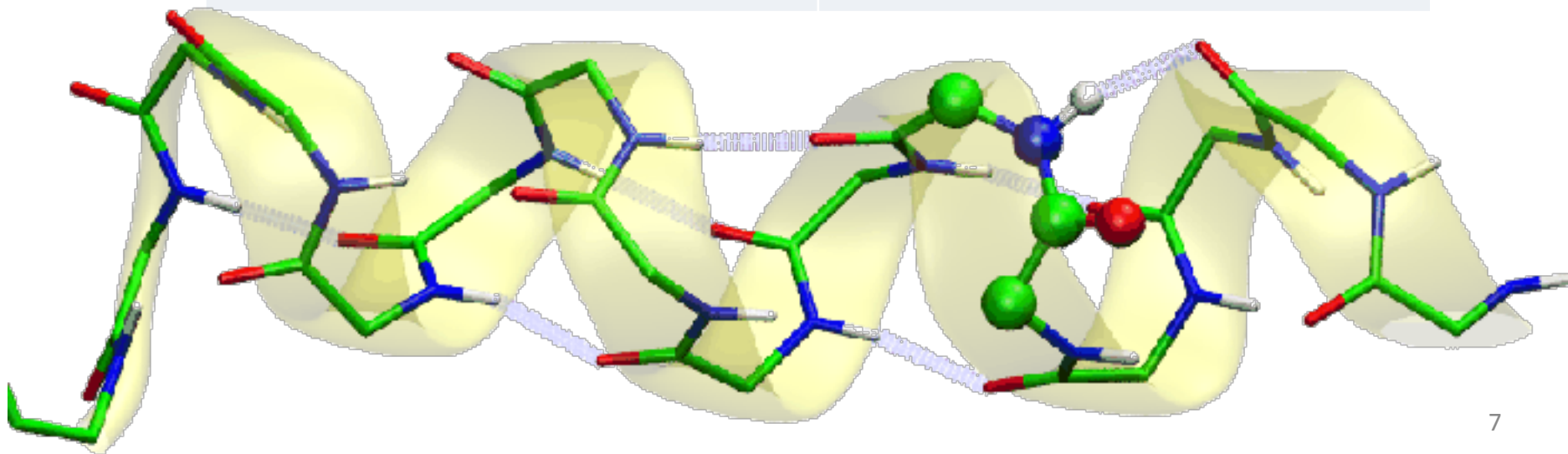
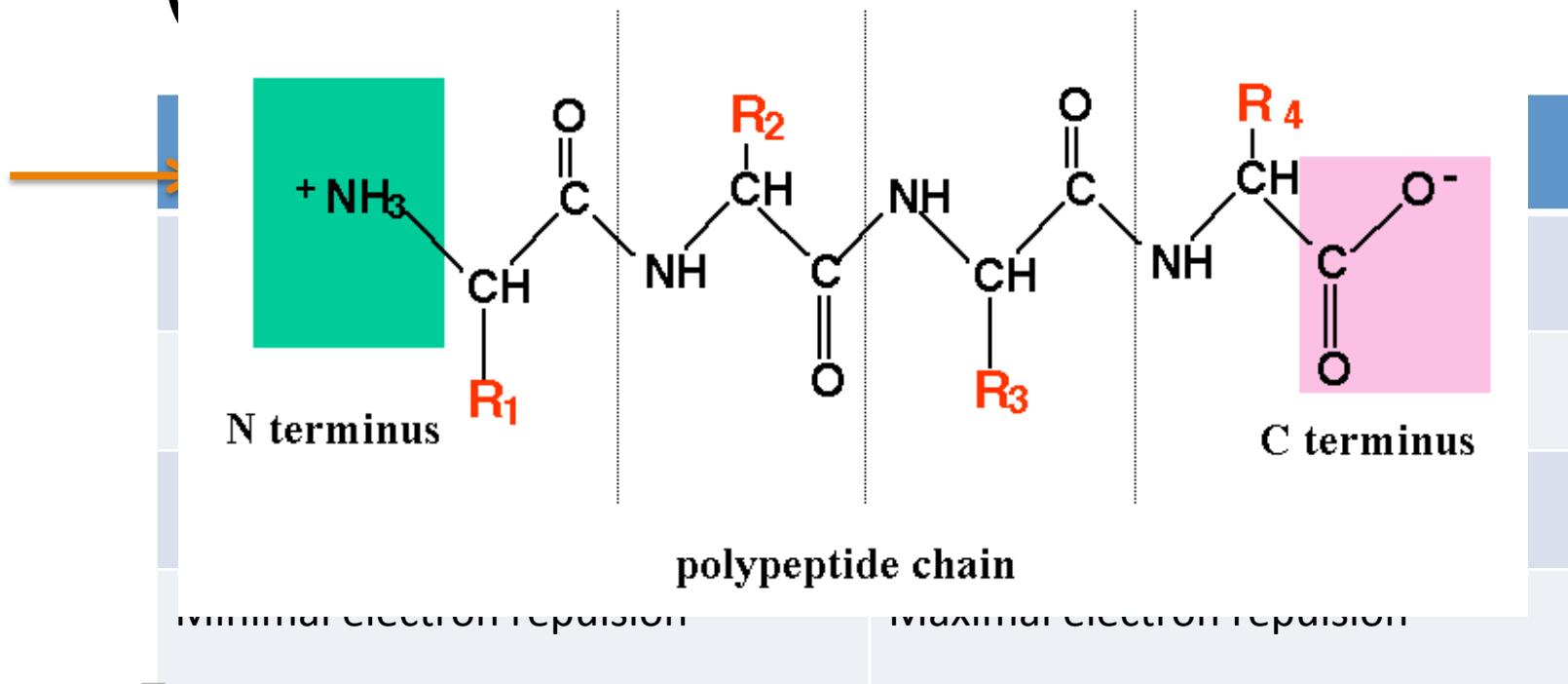


Formule chevaley



Newman projection

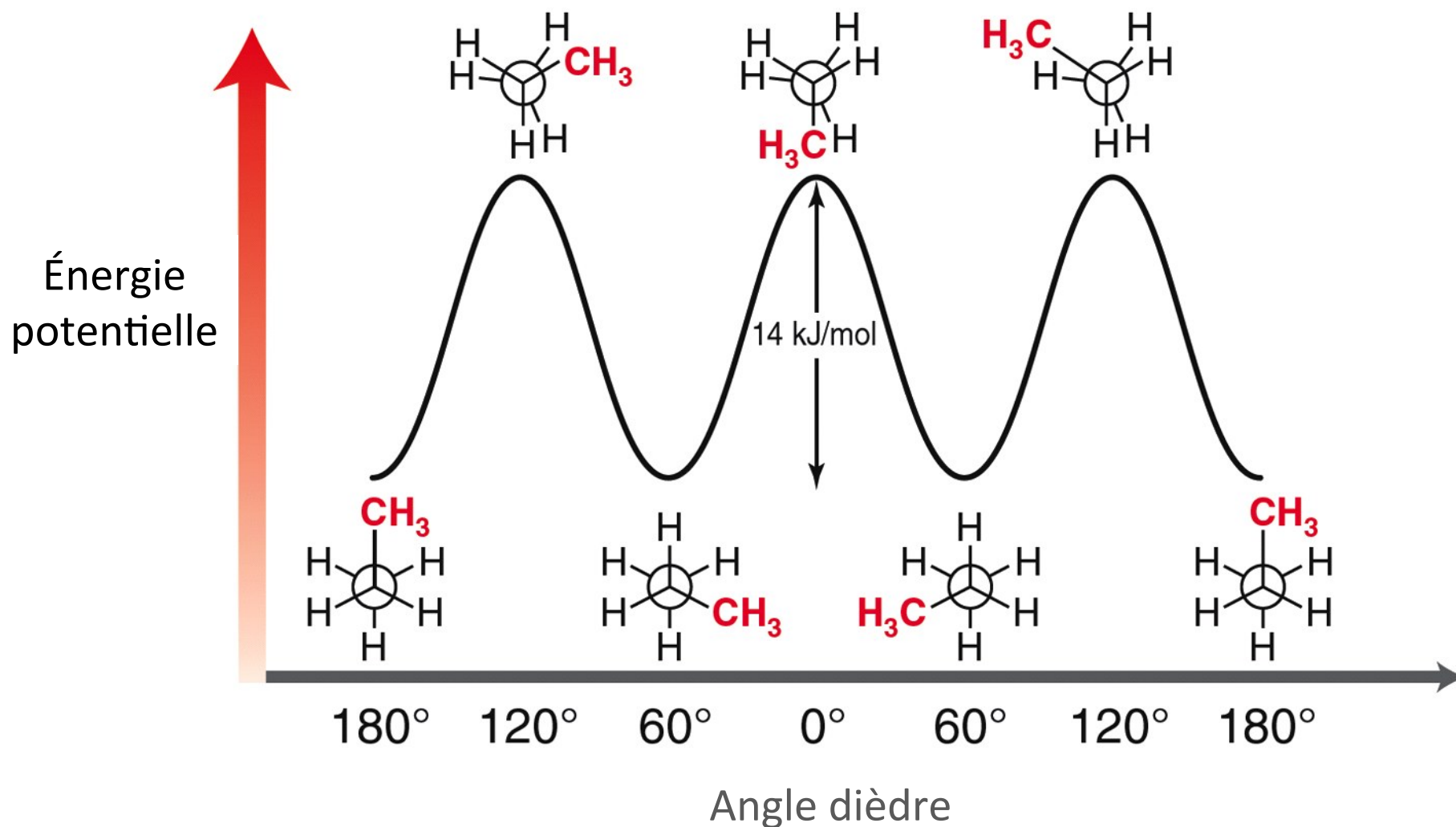
Peptide = chain of amino acids



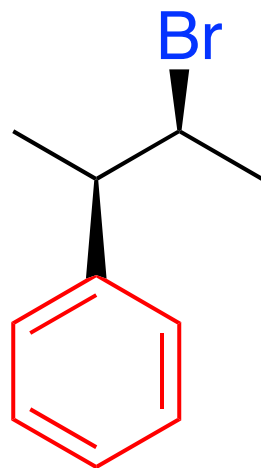
Projection de Newman: butane

Projection de Newman: butane

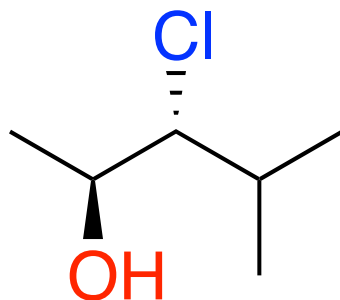
Analyse conformationnelle du propane



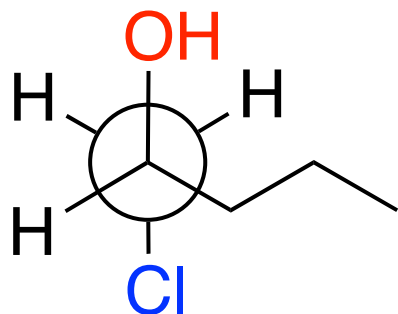
Dessinez la projection de Newman de la molécule suivante.



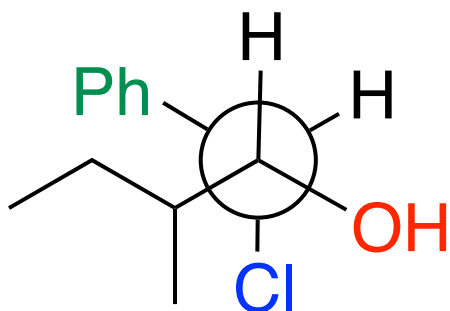
Dessinez la projection de Newman de la molécule suivante.



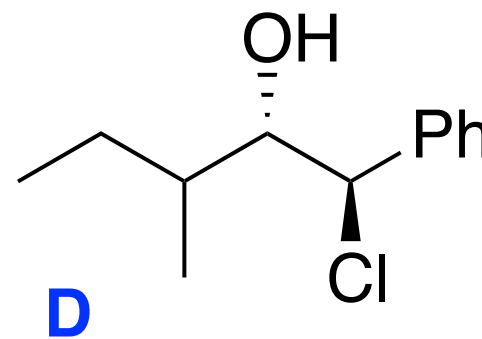
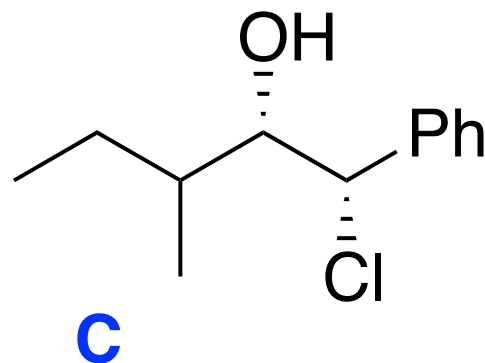
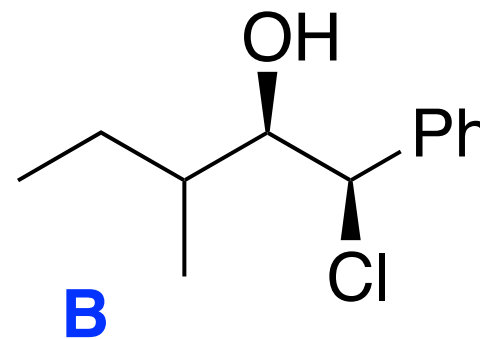
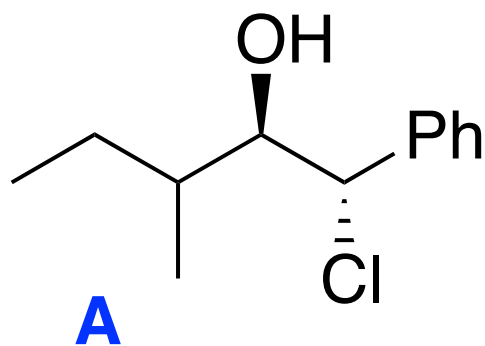
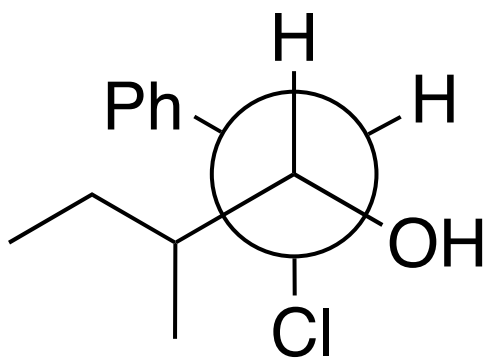
Convertissez la projection de Newman en formule topologique.



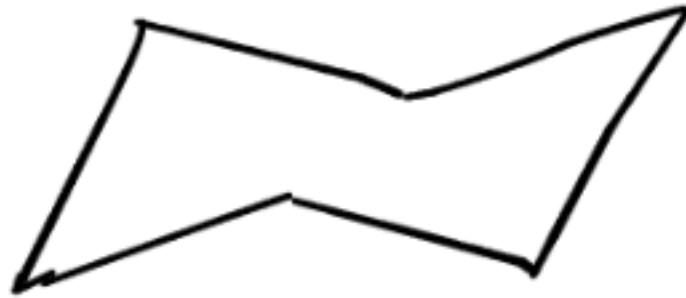
Convertissez la projection de Newman en formule topologique.



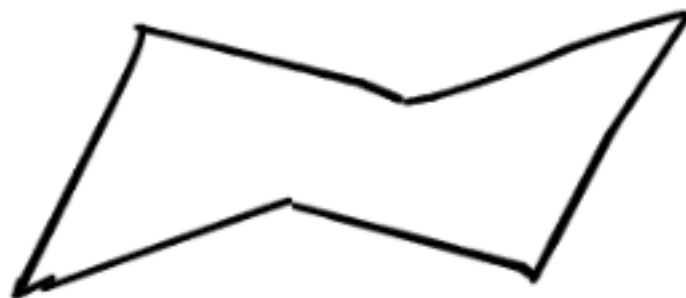
Au dernier cours: Quelle formule topologique correspond à la projection de Newman?



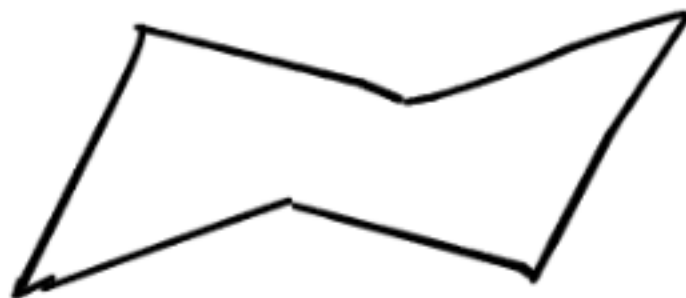
Conformation chaise du cyclohexane



Dessinez tous les substituants axiaux



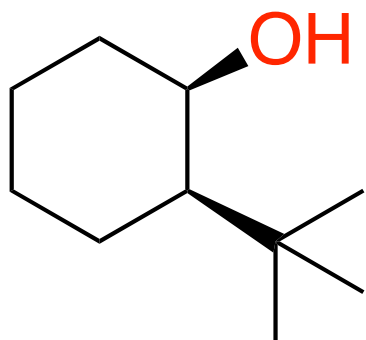
Dessinez tous les substituants
équatoriaux



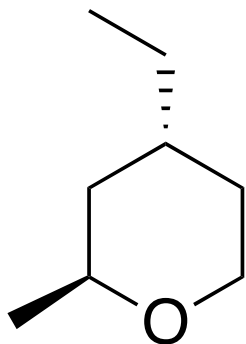
Dessinez la conformation chaise du
cis-1,2-dibromocyclohexane.

Dessinez la conformation chaise du
trans-1,2-dibromocyclohexane.

Dessinez la conformation chaise de la molécule suivante.



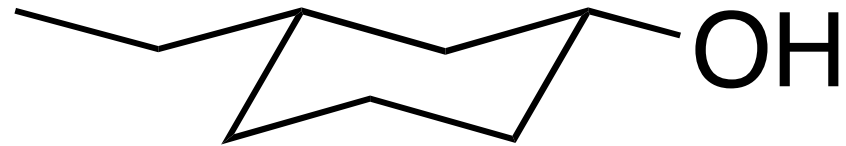
Dessinez la conformation chaise de la molécule suivante.



Les substituants sont-ils (A) *cis* ou (B) *trans*?



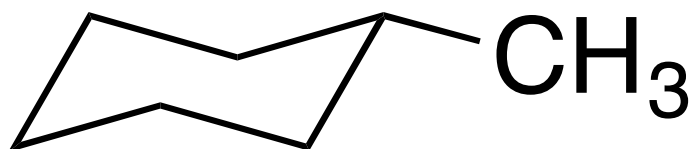
Les substituants sont-ils (A) *cis* ou (B) *trans*?



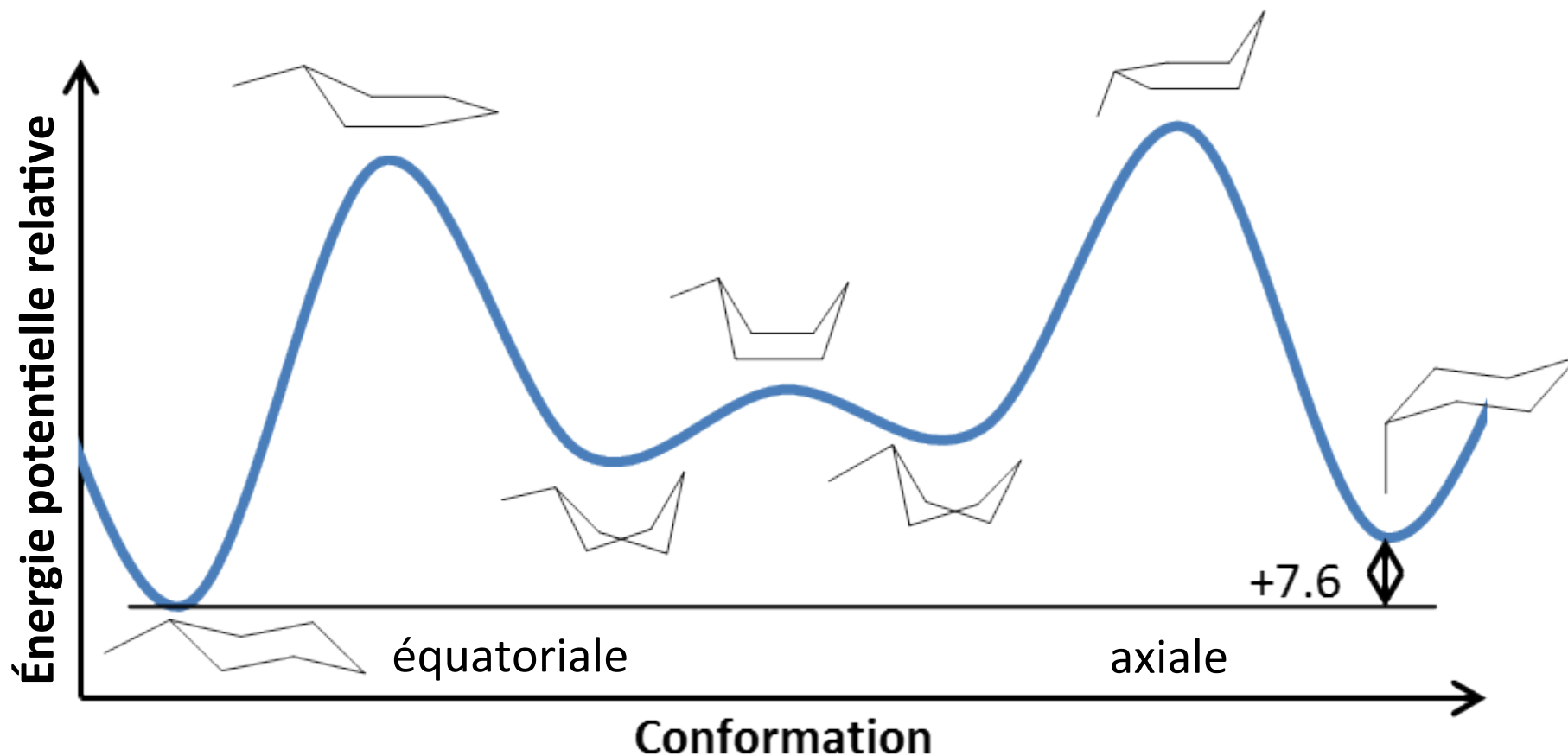
Interconversion des conformations chaises

<http://www.youtube.com/watch?v=bPLREpfZ63I>

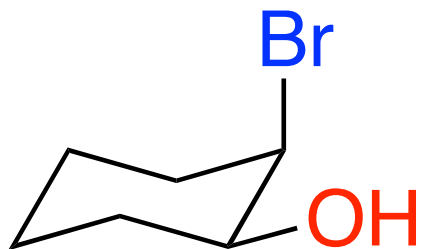
Interconversion des conformations chaises



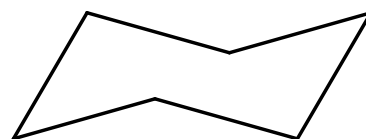
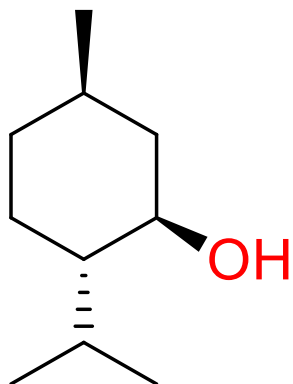
Conformations du méthylcyclohexane



Dessinez l'autre conformation chaise de la molécule.



Dessinez les deux conformations chaise du menthol.



Placez le OH
sur ce carbone

Dessinez les deux conformations
chaise du menthol.

