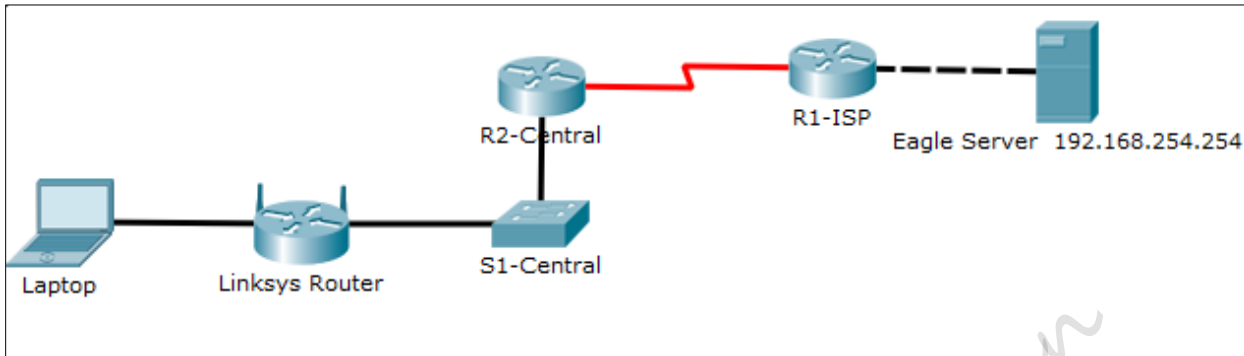


CST8108 Lab Preparation for Skills Based Assessment Part 1

Lab Topology



Part 1

- Reset your Linksys Router
- Connect the WAN port of your router to the Eagle Server Network
- Connect your laptop to port 1 on your router
- Configure your laptop's Ethernet Interface as follows:
 - IP Address: use DHCP
 - Mask: use DHCP
 - Default Gateway: use DHCP
 - DNS Server: 192.168.254.254
- Confirm that you can ping the Eagle Server
- Generate a Wireshark capture which includes:
 - Trace Route to 10.10.10.6
 - ARP request and Reply
 - DNS request and Reply
 - 3-way Handshake
 - HTTP GET

PS1: You may want to create a batch file to help with the capture.

PS2: Make sure you know how to configure your laptop as we did in previous labs. It is ***not*** repeated here again.

