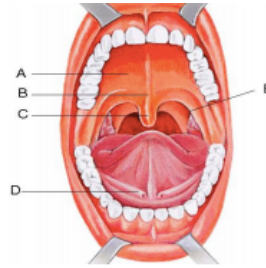


## Practice Exam

1. Regarding the functional processes of the digestive system, which of the following following is true:
  - A. Propulsion by peristalsis takes place in all organs of the digestive tract
  - B. The digestion of fats takes place in the stomach
  - C. The initiation of swallowing takes place in the laryngopharynx
  - D. Segmentation promotes mechanical mixing of the contents of the digestive tract
  - E. Mechanical digestion of food occurs only in the small intestine
  
2. Concerning the organs and organs attached to the digestive tract, which of the following is true:
  - A. The tongue is an organ of the digestive tract
  - B. The larynx is an organ attached to the digestive tract
  - C. The pancreas is an organ attached to the digestive tract
  - D. The pylorus of the stomach opens on the ileum
  - E. The cecum follows the descending colon.
  
3. Of the following statements concerning the enteric nervous system, which of the following statements are true:
  - A. Consists of myenteric nerve plexuses and submucosal nerve plexuses
  - B. Is stimulated by chemoreceptors, osmoreceptors and mechanoreceptors located on the luminal surface of the digestive tract
  - C. Can induce long reflexes that result in hormonal response
  - D. A and B are true
  - E. A, B and C are true
  
4. Regarding the basic structure of the digestive tract, which of the following statements is TRUE:
  - A. The visceral peritoneum is the serosa of the digestive tract
  - B. Muscularis mucosae is part of the muscularis
  - C. The muscularis has an inner layer of longitudinal smooth muscle and an outer layer of circular smooth muscle
  - D. The blood vessels are found only in the serosa
  - E. The mesentery constitutes the serosa of the digestive tract
  
5. Which of the following sequences describe the movement of food in the digestive system is in the right order?
  - A. Nasopharynx, oropharynx, laryngopharynx, larynx, esophagus.
  - B. Oropharynx, laryngopharynx, esophagus, stomach, pylorus.
  - C. Laryngopharynx, oropharynx, esophagus, stomach, pylorus.
  - D. Nasopharynx, oropharynx, larynx, laryngopharynx, esophagus

6. Which of his statements regarding the following illustration is FALSE:

- A. is the bony palate
- B. is the soft palate
- C. is the epiglottis
- D. is the duct of the submandibular gland
- E. is the palato-glowing arch



7. Regarding the composition of saliva, which of the following statements is FALSE:

- A. Saliva contains electrolytes
- B. Saliva is hypoosmotic
- C. Saliva contains proteolytic enzymes
- D. Saliva contains metabolic wastes such as urea and uric acid
- E. Saliva contains antimicrobial peptides such as defensins

8. In the dental formula in adults 2-1-2-3, what does 1?

- A. incisor tooth.
- B. molar tooth.
- C. premolar tooth
- D. canine tooth
- E. wisdom tooth.

9. Regarding the esophagus, which of the following statements is FALSE:

- A. The lining of the esophagus is made to absorb nutrients.
- B. The serosa of the esophagus is replaced by a weed
- C. The lining of the esophagus consists of squamous stratified epithelium Non-keratinized
- D. The esophagus connects the oropharynx to the stomach
- E. The esophagus opens into the stomach through the cardiac opening

10. Concerning the regulation of gastric secretions, which of the following statements is FALSE:

- A. The three phases of regulation of gastric secretions are the phases cephalic, gastric and intestinal.
- B. Cephalic phase involves positive or negative control of stimulation vagus nerve that originates in the medulla oblongata
- C. The stretching of the stomach following the arrival of food stimulates mechanoreceptors that trigger long reflexes through the bulb spinal cord to increase vagus nerve stimulation
- D. Stimulation of the stomach by the vagus nerve causes an increase in gastric secretions

E. Increased secretion of gastrin in the duodenum by the arrival partially digested food decreases gastric secretions

11. The first organ that receives food digestion products via the blood circulation is:

- A. The liver
- B. The pancreas.
- C. The heart
- D. The brain.
- E. The gall bladder.

12. The last step of digestion of carbohydrates and proteins is accomplished by:

- A. gastric enzymes.
- B. Enzymes of the brush border (striated plateau) of the small intestine.
- C. pancreatic enzymes.
- D. gallbladder enzymes.
- E. Caecum enzymes.

13. Which of the following statements is FALSE:

- A. The liver lobules are the structural units (hexagonal) and functional liver
- B. Hepatic lobules consist of spans of hepatocytes and spaces interlobular at each corner of the lobule
- C. in the interlobular space, there is an interlobular biliary arteriolar door and a venule door
- D. the blood of the arteriolar portal is combined with the blood of the portal venule to enter in the sinusoids
- E. Sinusoids contain macrophages used to transform nutrients and store vitamins

14. The functions of the gallbladder include:

- A. Production of bile.
- B. Storage and concentration of bile.
- C. Urea formation.
- D. Storage of enzymes.

15. Which of the following statements is FALSE:

- A. Bile is formed in hepatocytes
- B. The bile is stored and concentrated in the gallbladder
- C. Cholecystokinin (CCK) and secretin are secreted by endocrinocytes of the small intestine in response to the entry of an acid and fatty chyme into the duodenum
- D. Secretin and Bile Salts Reduce Bile Formation in the Liver
- E. The CCK contracts the gallbladder and relaxes the sphincter for the passage of bile in the duodenum

