

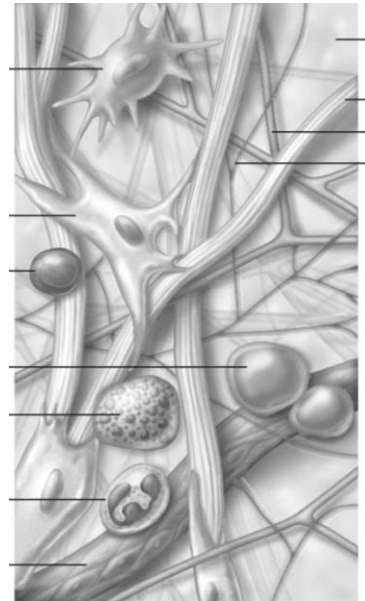
**Sample Exam Questions: Tissues**

September 12  
Frank Feiner, PhD, MD

**Answers at end**

1] What are the *three main components of connective tissue*?

- A) ground substance, fibers, and cells
- B) neutrophils, fibrous capsule, and secretory cells
- C) collagen, elastin, and reticular fibers
- D) fibroblasts, chondroblasts, and mucin
- E) microvilli, collagen, and mesothelium



2] All of the following are found in *ground substance* EXCEPT which one?

- A) cell adhesion proteins
- B) proteoglycans
- C) interstitial fluid
- D) capillaries
- E) dissolved nutrients

3] Substance **X** is taken into your body without being swallowed. Which one of the following tissue types is **X** most likely to *initially pass through*?

- A) connective tissue
- B) epithelial tissue
- C) glandular tissue
- D) muscle tissue
- E) nervous tissue

**Answers:**

1] A

2] D

3] B