

Université d'Ottawa
Faculté de génie

École d'ingénierie et de technologie de
l'information



uOttawa

L'Université canadienne
Canada's university

University of Ottawa
Faculty of Engineering

School of Information Technology and
Engineering

ELG3336
Electronics for Mechanical Engineering

MIDTERM EXAMINATION

Length of Examination: 90 minutes

October, 2016

Professor: Riadh Habash

Page 1 of 7

Family Name: _____

Other Names: _____

Student Number: _____

Signature _____

Closed book.

If you do not understand a question, clearly state an assumption and proceed.

At the end of the exam, when time is up:

- Stop working and turn your exam upside down.
- Remain silent.
- Do not move or speak until all exams have been picked up, and a TA or the Professor gives the go-ahead to leave.

QUESTION 1 (5 marks):

Follow the procedure of solution, answer questions, identify mistakes (circle) and correct them, if any!

Consider the small-signal amplifier shown in Figure 1. Assume $V_{CC} = 24\text{ V}$, $R_S = 1.5\text{ k}\Omega$, $R_1 = 8.6\text{ k}\Omega$, $R_2 = 200\text{ k}\Omega$, $R_C = 5\text{ k}\Omega$, $R_L = 2\text{ k}\Omega$, $\beta = 75$, and $\pi = 750\ \Omega$.

- Draw the DC bias circuit and prove that the BJT operates in the active region.
- Draw the small-signal equivalent circuit and find the voltage gain of the amplifier.

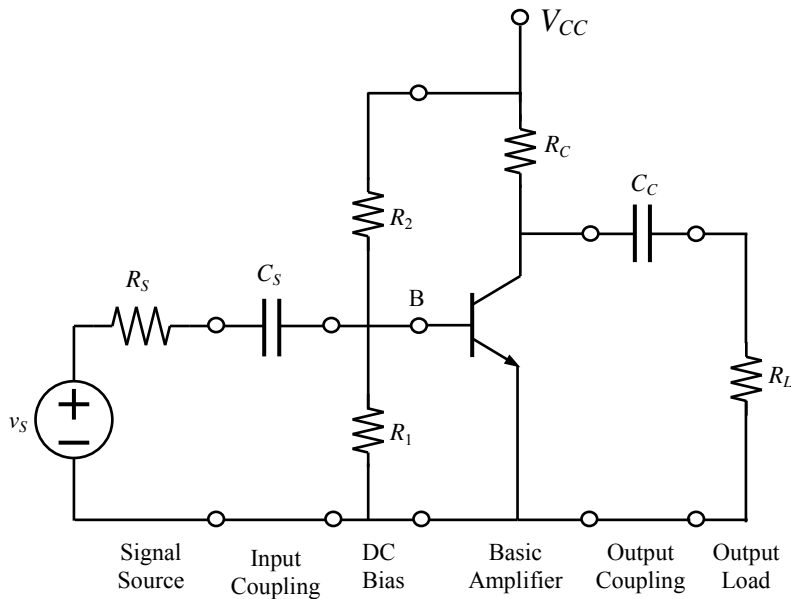


Figure 1 A stage of an amplifier circuit.

Solution:

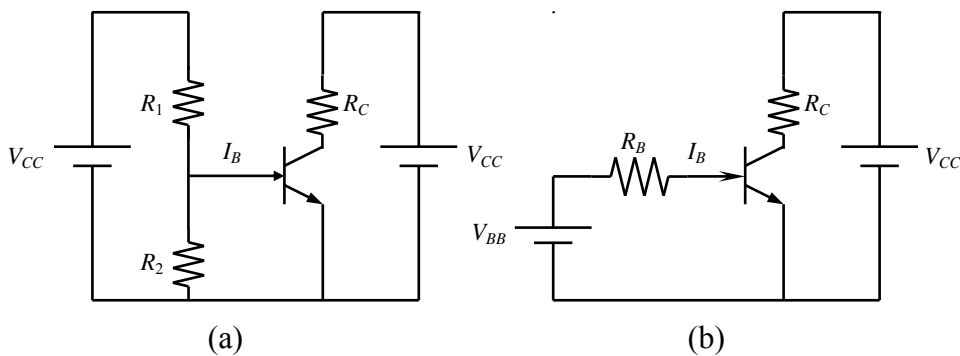


Figure 2 (a) DC bias circuit. (b) Equivalent of the input portion.

Step One: The DC analysis

The open-circuit base DC bias voltage is

	$V_{BB} = 24 \times \frac{8.6}{8.6 + 200} = -1.99\text{ V}$
--	---

The DC output impedance of the bias network is

	$R_B = 8.6 // 200 = 8.25 \text{ k}\Omega$	
--	---	--

A silicon transistor requires a threshold voltage of $V_{BE} = 0.7 \text{ V}$ to turn ON the base-emitter junction, therefore

	$I_B = \frac{V_{BB} - 0.7}{R_B} = \frac{0.99 - 0.7}{8.25 \text{ k}\Omega} = 35.1 \text{ A}$ $I_C = \beta I_B = 75 \times 35.1 \times 10^{-6} = 2.63 \text{ A}$	
--	--	--

Now consider the closed loop path in the output circuit of the amplifier and apply KVL in order to find the collector-emitter voltage V_{CE} .

	$-V_{CC} + I_C R_C + V_{CE} = 0$ $V_{CE} = 24 - 5 \times 2.63 = 10.8 \text{ V}$	
--	---	--

Therefore, the BJT is operating in the saturation region.

Step Two: AC Analysis

Draw the Small-signal circuit of the BJT amplifier (1 mark).

Figure 4 Small-signal circuit of the BJT amplifier.

Consider the circuit in stage one, first.

- Let us find the equivalent resistance of the four resistors: 1.5, 200, 8.6, and 0.75

$\frac{1}{R_T} = \frac{1}{1.5} + \frac{1}{200} + \frac{1}{8.6} + \frac{1}{0.75}$ $R_T = 0.472 \Omega$

Stage one circuit will turn into the following circuit

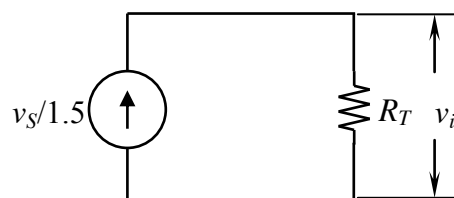


Figure 4: Equivalent circuit of stage-one circuit.

$$v_i = \frac{v_S}{1.5} \times R_T = 0.314 v_S$$

This value of v_i is same across each element in the circuit of Figure 3. Now, apply ohm's law to find i_b

$$i_b = \frac{v_i}{r_\pi} = \frac{0.314 v_S}{0.75} = 0.416 v_S$$

Now, consider stage two circuit

$$v_{out} = -75 i_b \times (2/5) = -75 \times 0.416 v_S \times 1.42 = 446 v_S$$

Accordingly, the gain is $v_{out} / v_S = 446$.

QUESTION 2 (2 marks)

A safety system shown has three inputs. If two or more of these are 1 at the same time, an alarm should sound. Draw a figure for the system; give its truth table; give its Boolean function; simplify the results; and draw the logic circuit to perform the alarm using NAND gates only.

QUESTION 3 (3 marks)

Design and draw a DC power supply that provides a nominal DC voltage of 5 V and be able to supply a load current I_{load} as large as 25 mA; that is R_{load} can be as low as 200 Ω . The power supply is fed from a 120-V (rms) 60 Hz AC line. Assume the availability of a 5.1-V zener diode having $r_z = 10 \Omega$ at $I_z = 20$ mA (and use $V_{zo} = 4.9$ V), and that the required minimum current through the zener diode is $I_{z\text{min}} = 5$ mA.