

Lophotrochozoa

Presence of a U shaped gut and lophophore

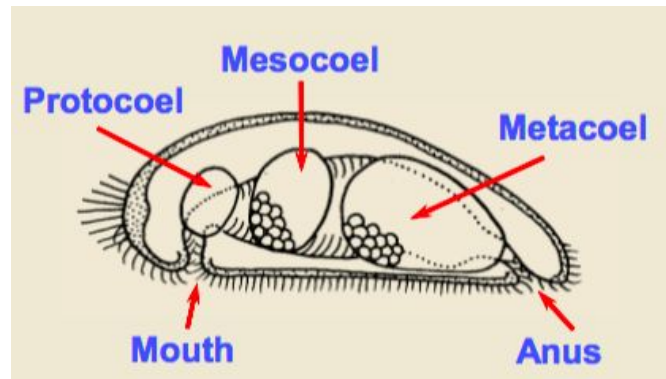
OR

Trochophore larval stage

Defining a group by whether they had one OR another trait had never been done before

Lophophorates

- Tripartite coelom
- Lophophore
- U shaped gut



- Protocoel: most anterior end
- Metacoel: most posterior end
- Mesocoel: in the middle

Bryozoa

- Body formed from polypid and cystid
- Invert lophophore (used to feed)
- Colonies of polyps grow by budding
- Funicular system

Zoarium: all individuals in a colony

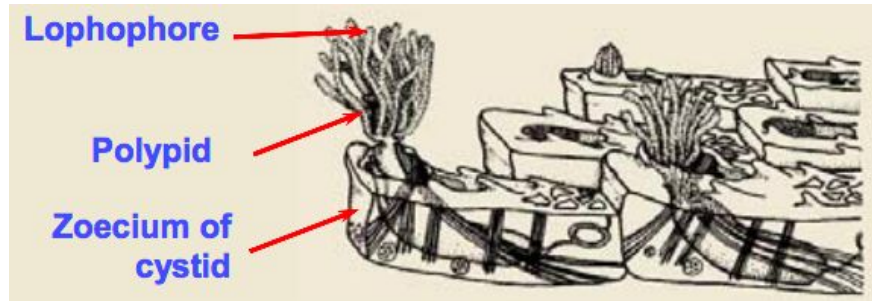
Zoecium: casing which encloses a colony

Ancestrula: one that undergoes asexual budding to form whole colony

Polypide:

Cystide:

Bryozoan zoarium



Lophophore = basically ciliate tentacles surrounding the mouth

- They use the cilia to trap food, pass it towards the mouth, into digestive system
- Cilia = grab the food
- Each “finger” is a hydrostatic skeleton that can move any which way it wants

U shaped gut = anal opening is nowhere near the mouth

- Sessile organisms can't have the fecal matter building up, near the mouth, etc.
- The water currents do not run into any undigested fecal residue
- Cardiac stomach = closest to the mouth
- Pyloric stomach = scavenge what we can if there is anything left that is useable and undigested

Tripartite coelom = lophophore, epistome, body cavity