

Images

Lab 3

Cranial Nerves and Special Senses

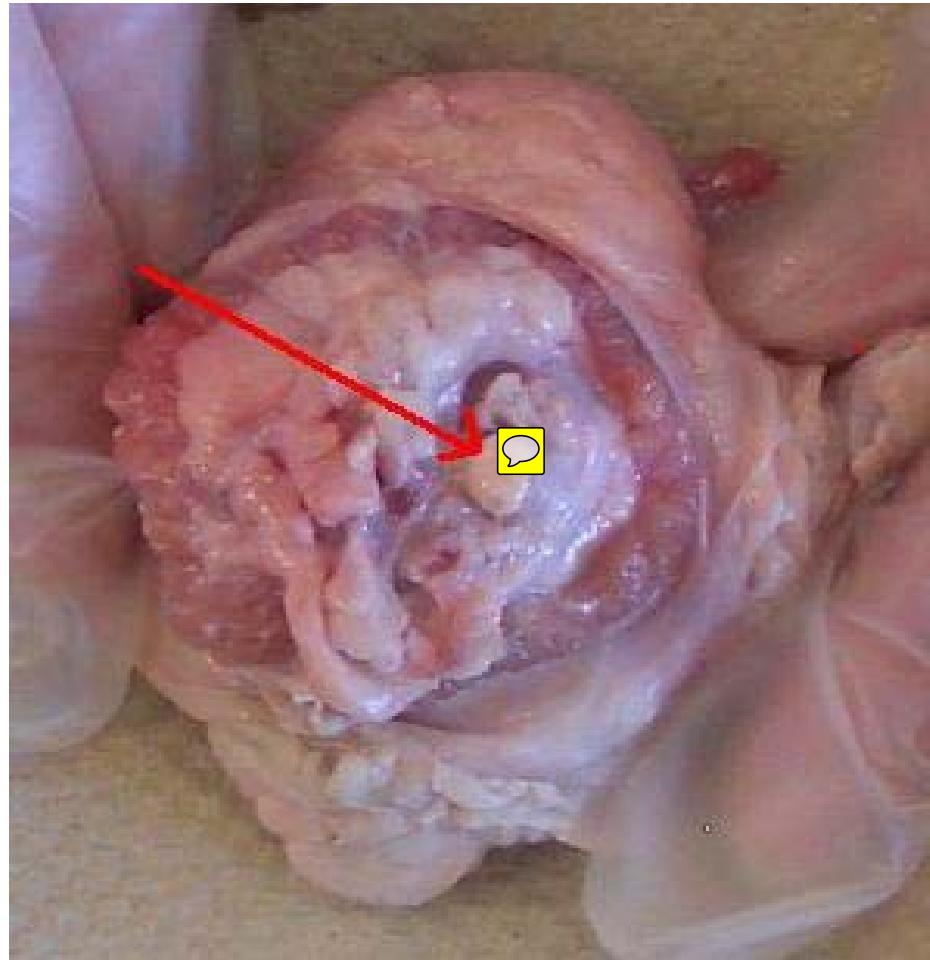
Exterior of a cow eye



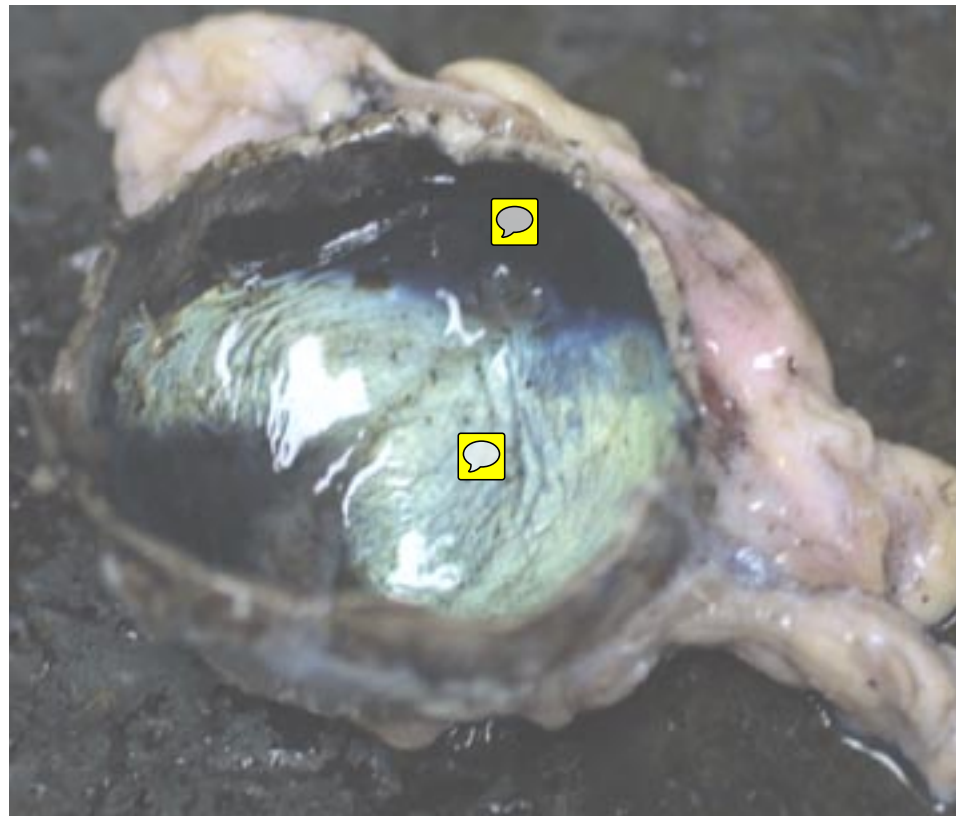
Exterior of a cow eye – anterior view



Exterior of a cow eye – posterior view



Cow eye – anterior view after dissection



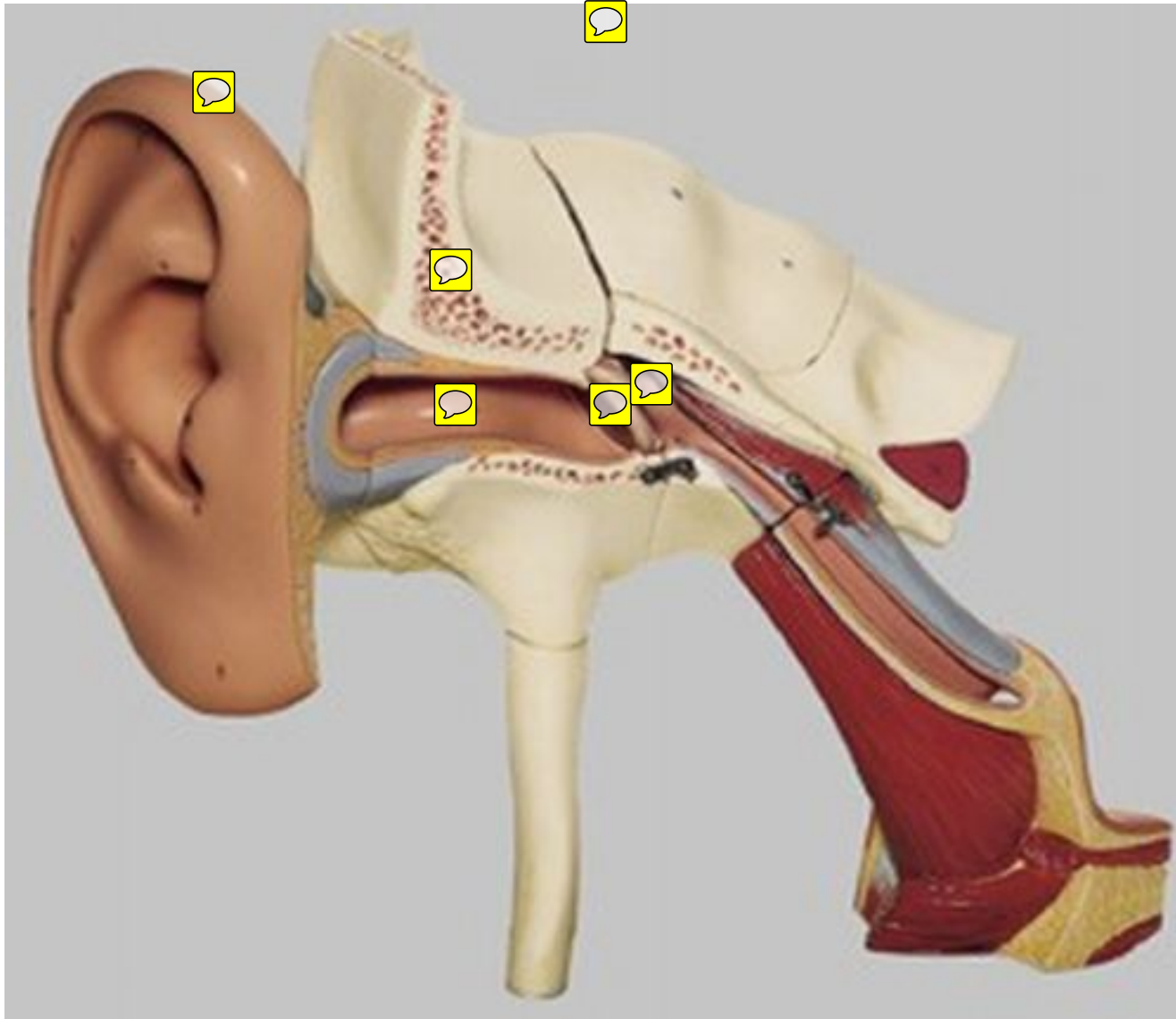
Portion of the cow eye that was dissected out



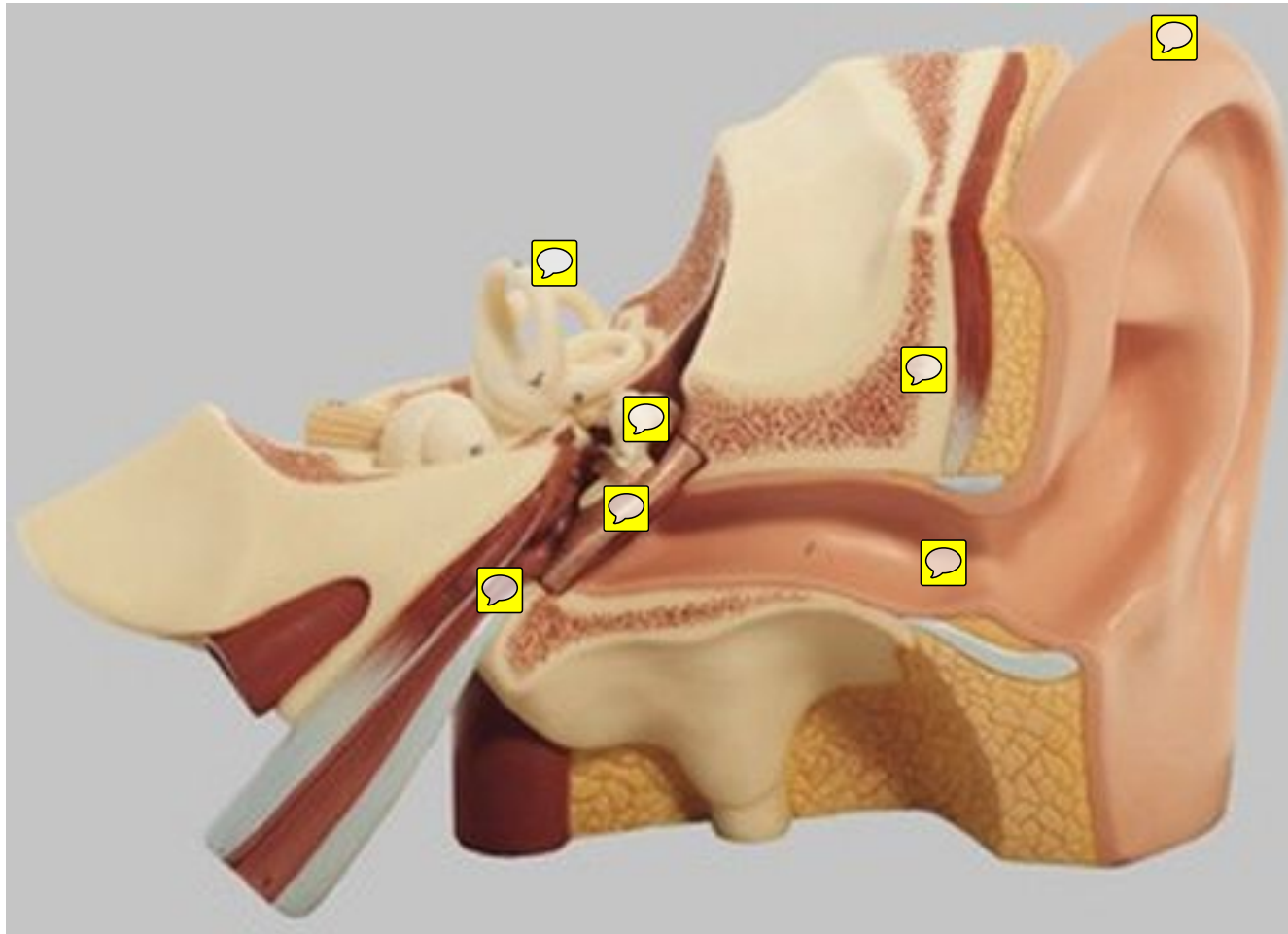
Portion of the cow eye that was dissected out



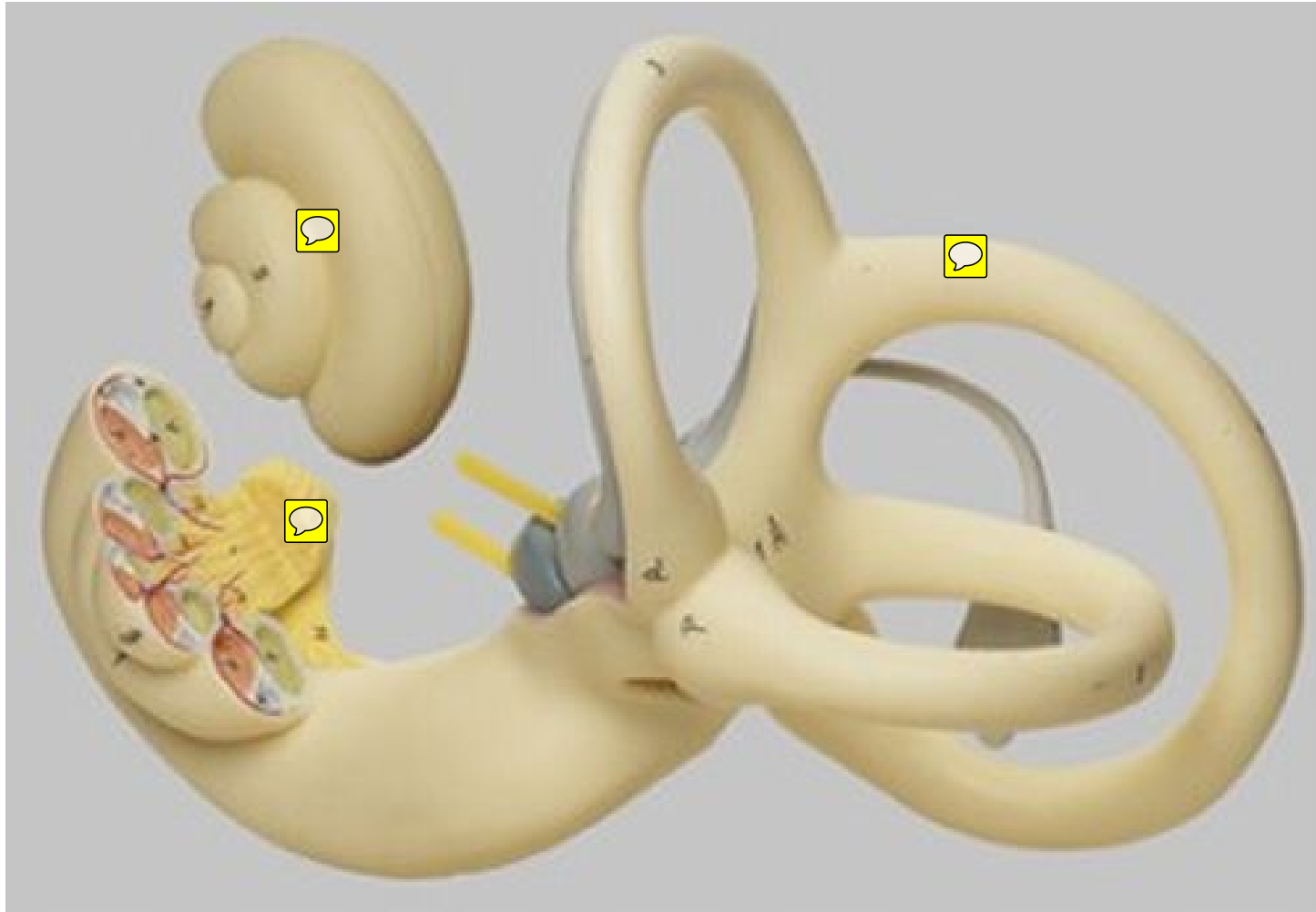
Ear Model – Frontal Section



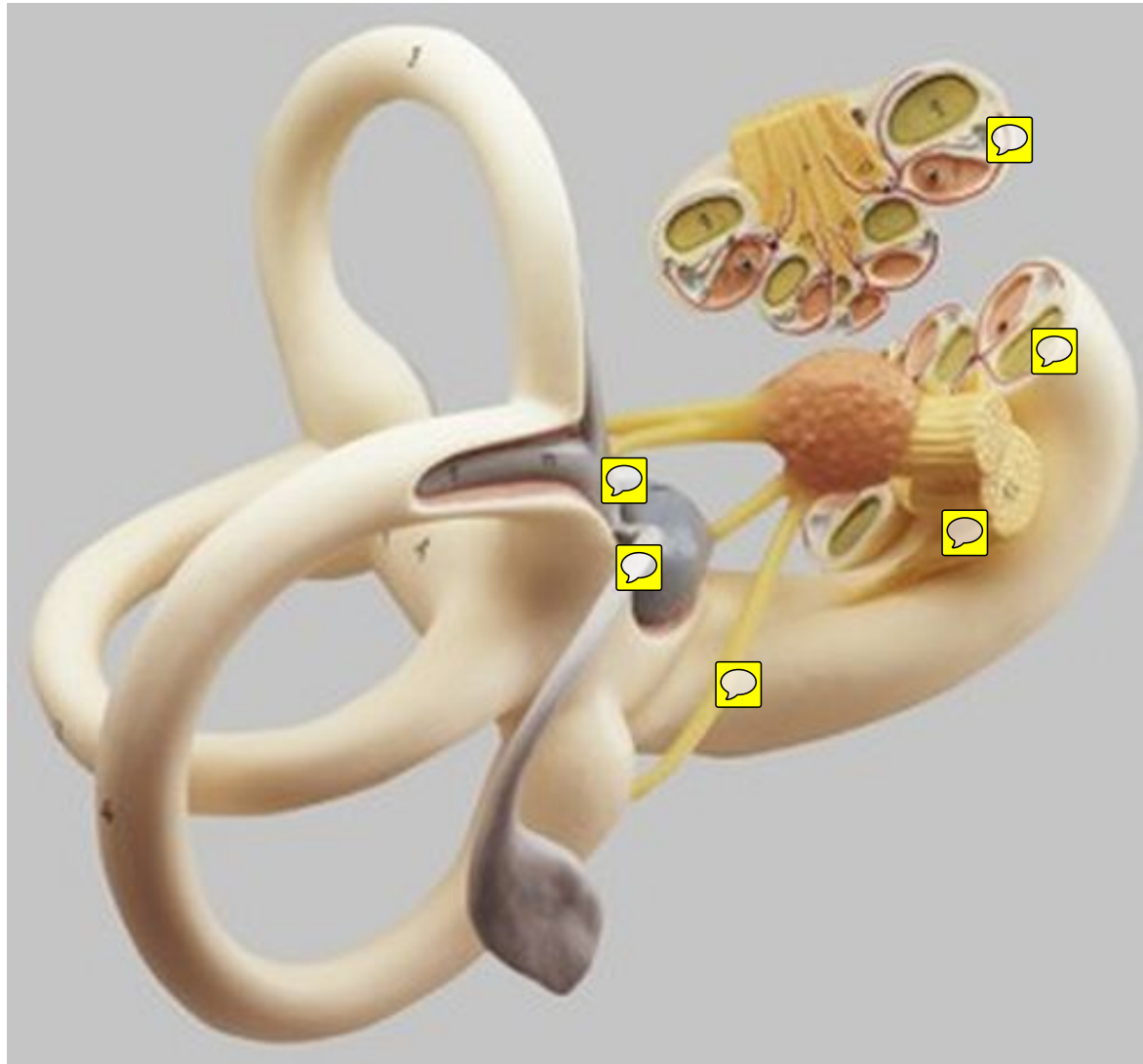
Ear Model – Frontal Section



Model of the Inner Ear – Anterior View

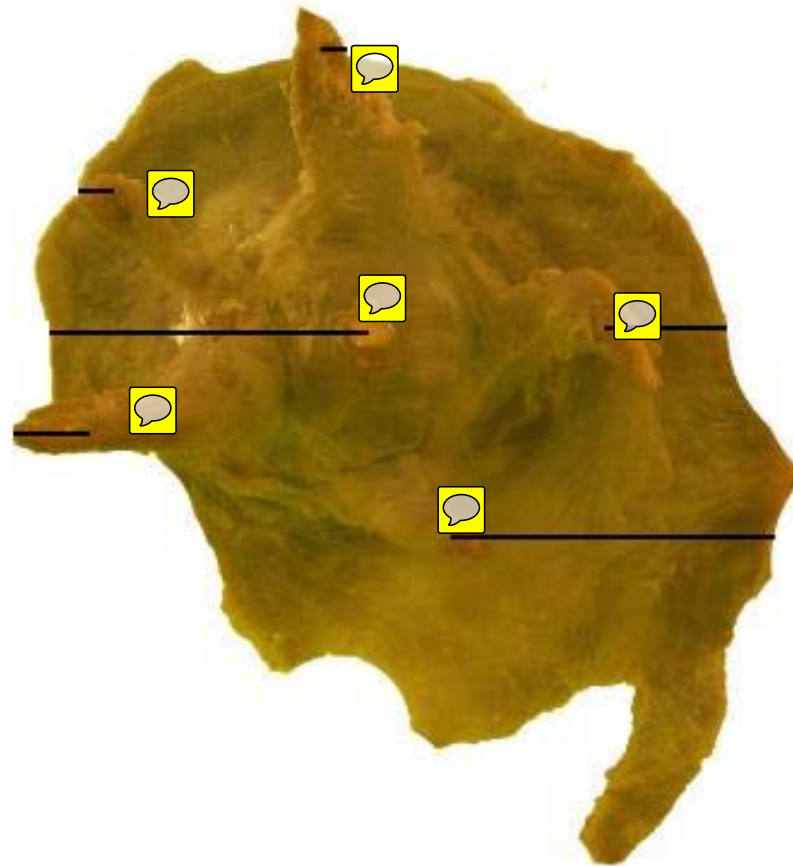


Model of the Inner Ear –Posterior View



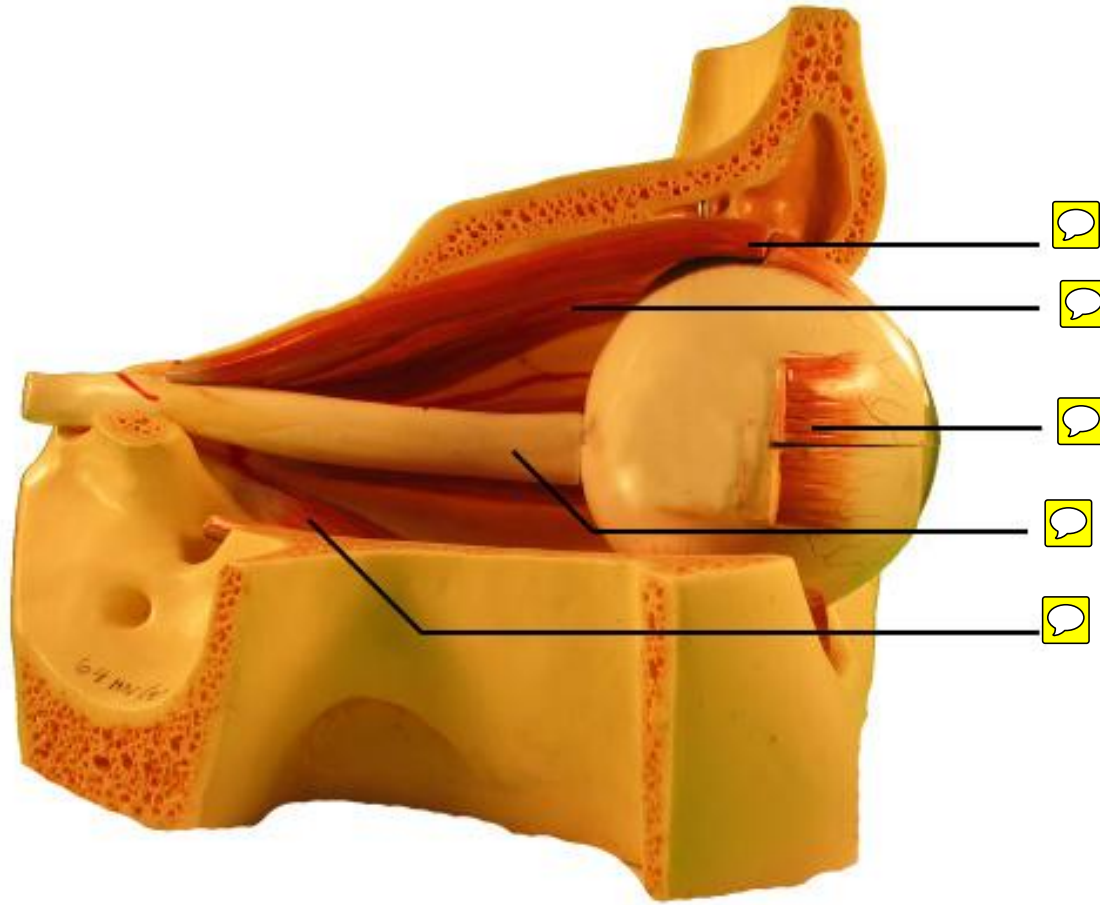
Coronal Cut (Posterior View) of NS12S3

(Muscles of the eye)



Lateral View of NS12S4

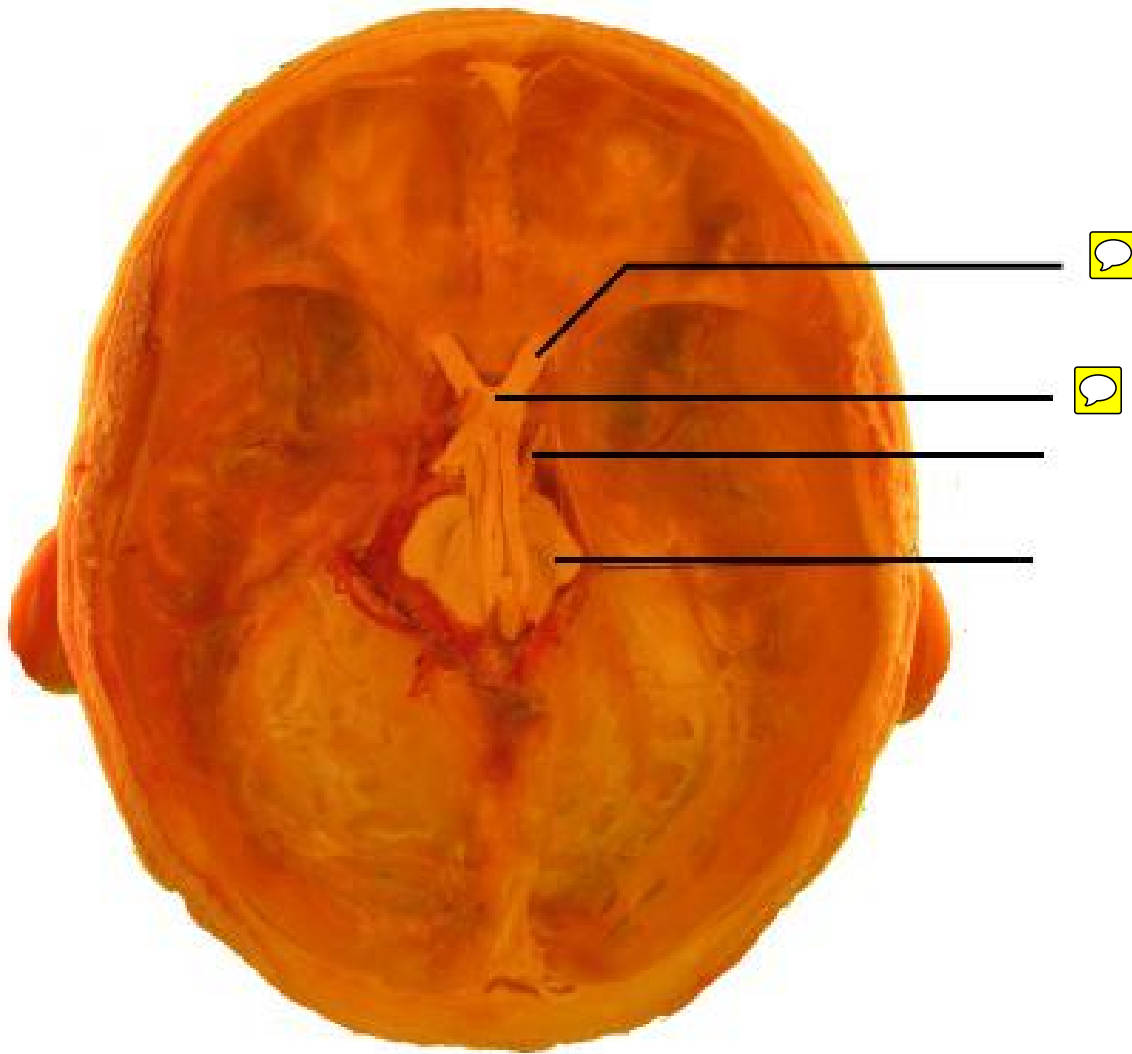
(Model showing the extrinsic muscles of the eye)



Plastic model showing similar structures to specimen NS12S3

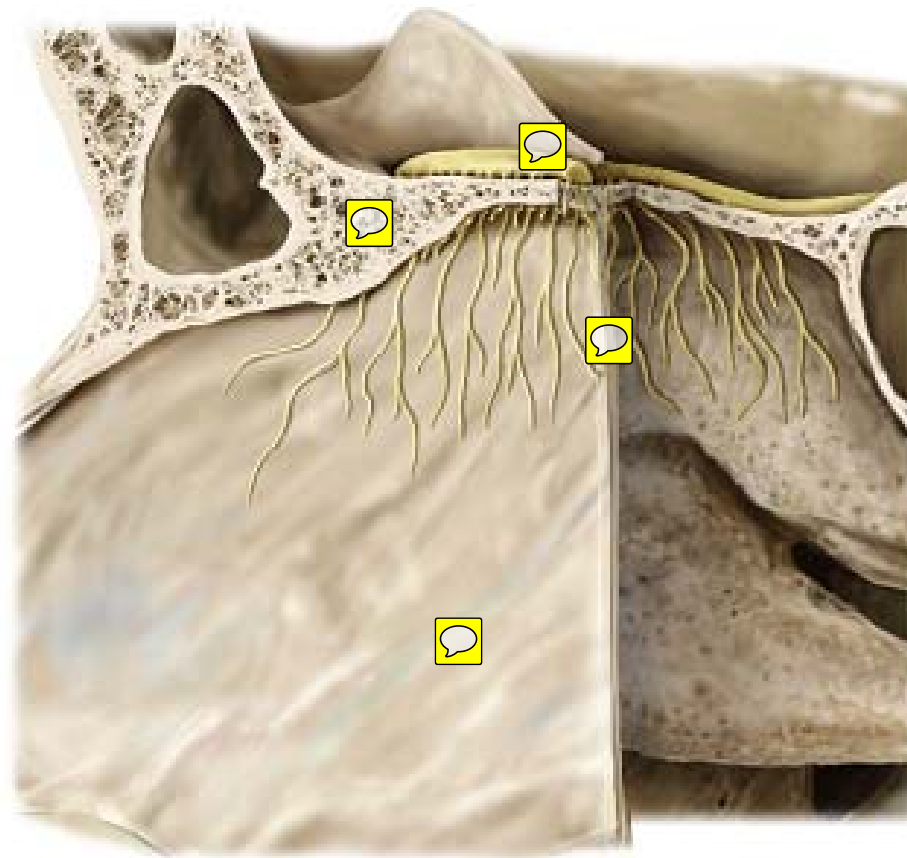
Superior View of NS12S5

(Specimen showing where the mid brain sits in the cranium)

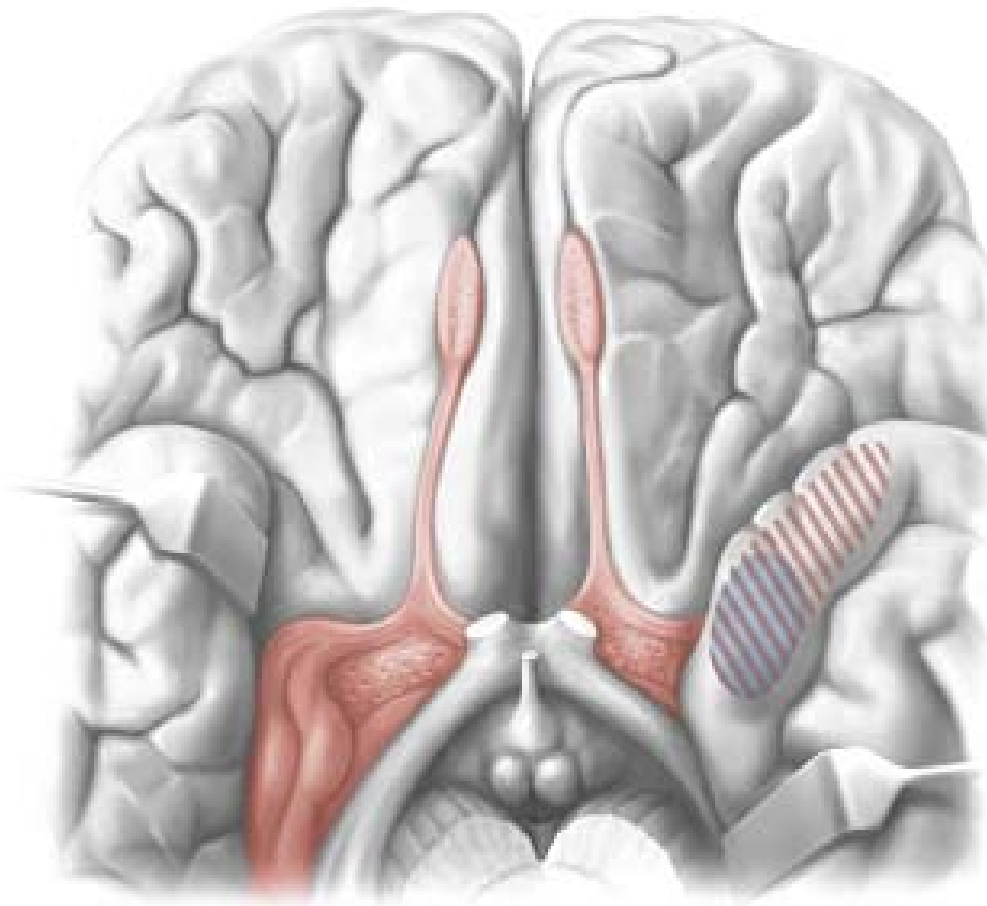


Olfactory nerve (CN I).

Olfactory fibers. Portion of left nasal septum and lateral wall of right nasal cavity, left lateral view.

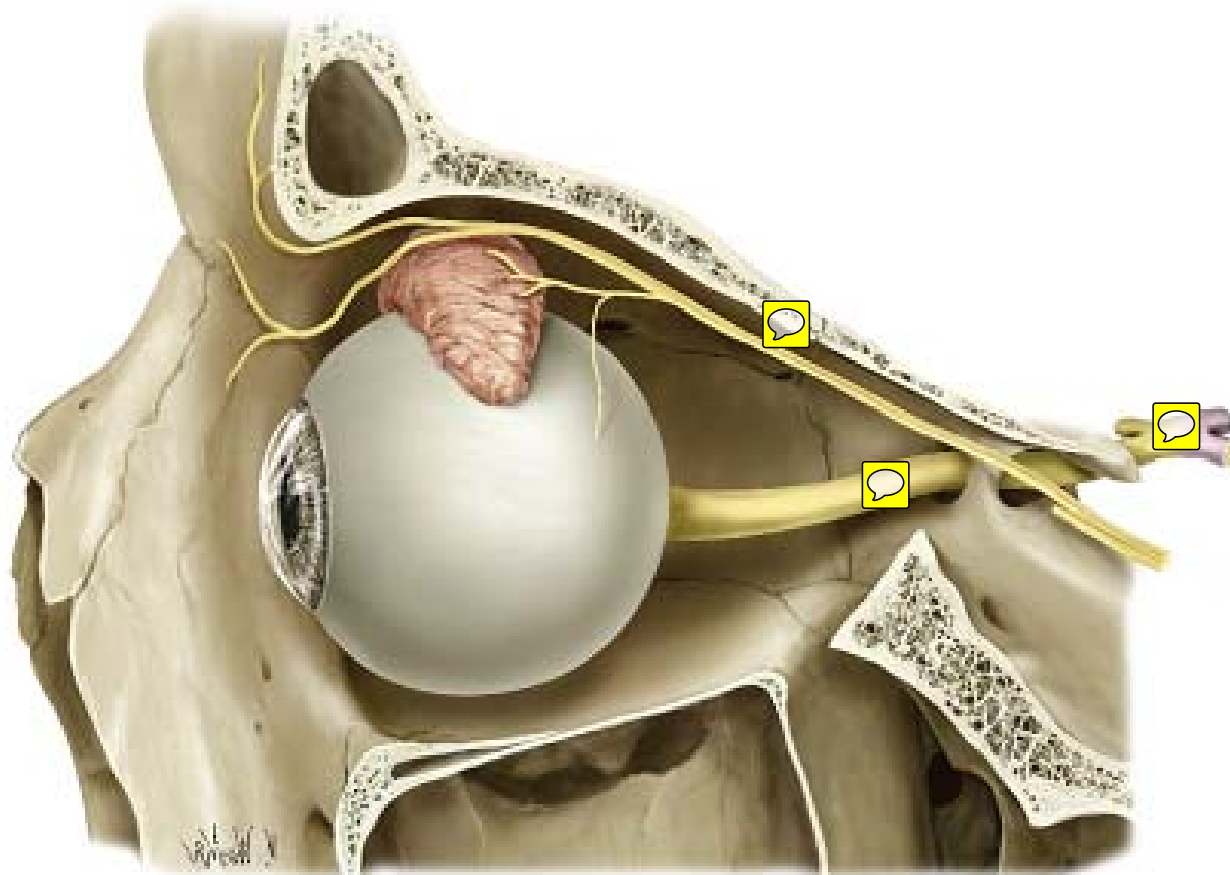


Olfactory nerve (CN I).
Olfactory bulb and tract, inferior view.



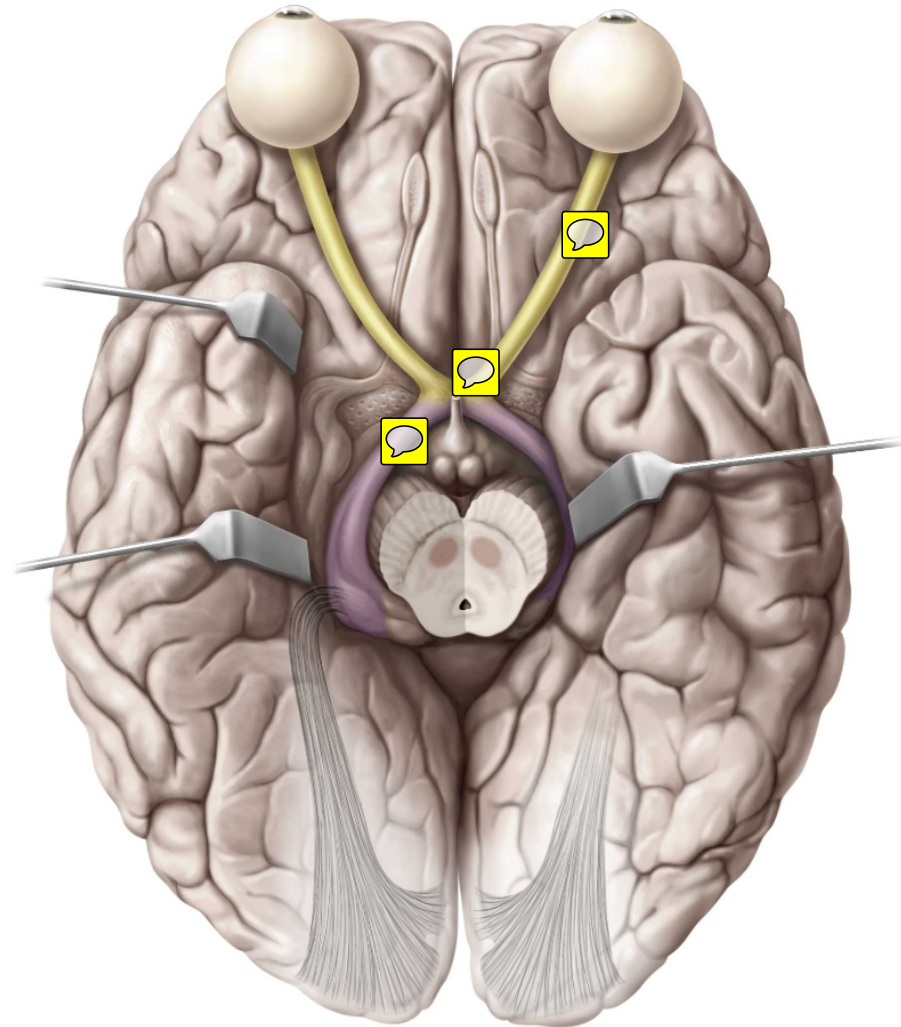
Optic nerve (CN II).

Optic nerve in the left orbit, lateral view.



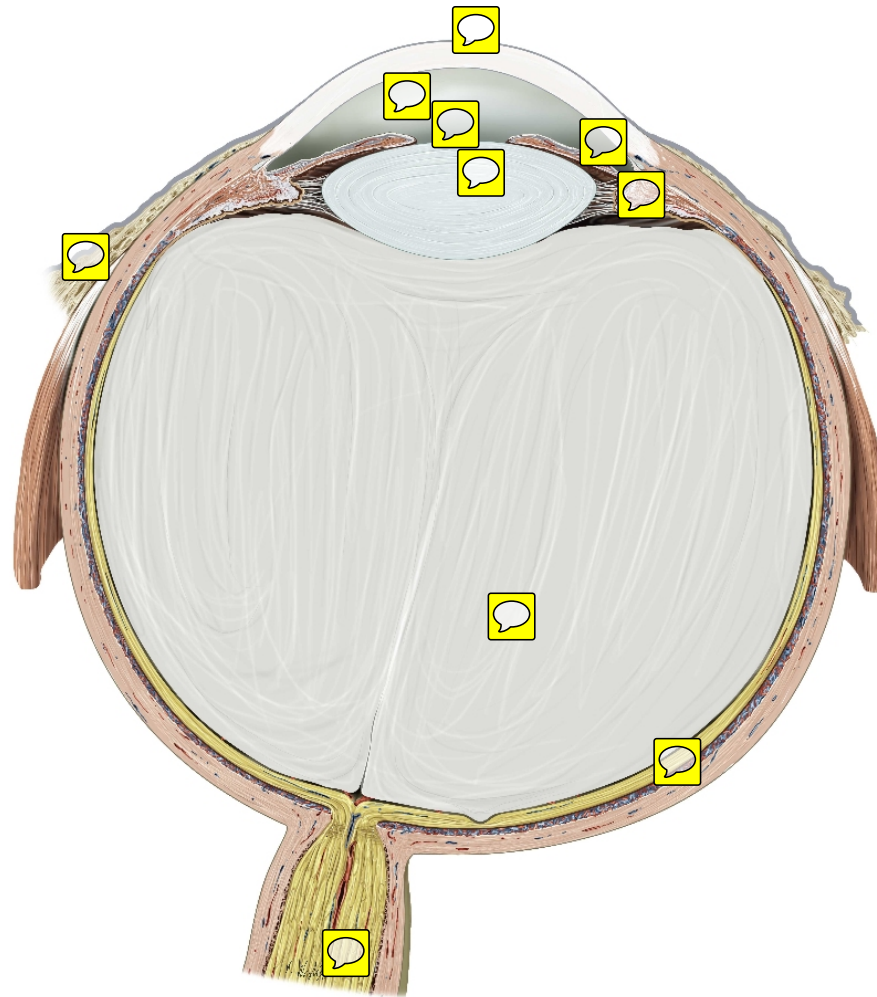
Optic nerve (CN II).

Course of the optic nerve, inferior (basal) view.

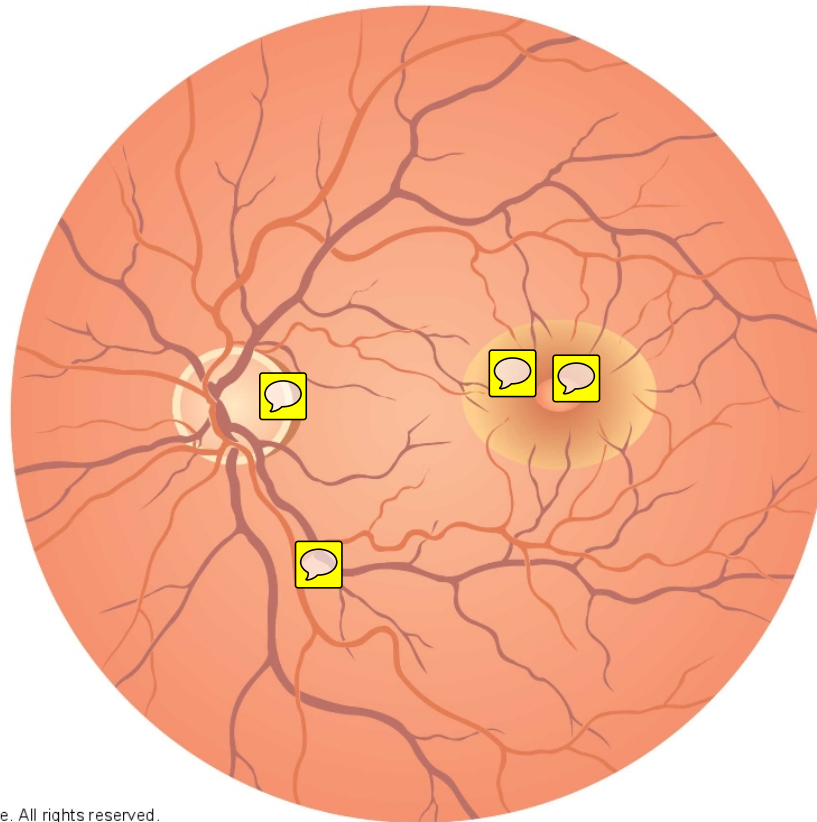


Structure of the eyeball.

Transverse section through right eyeball, superior view.

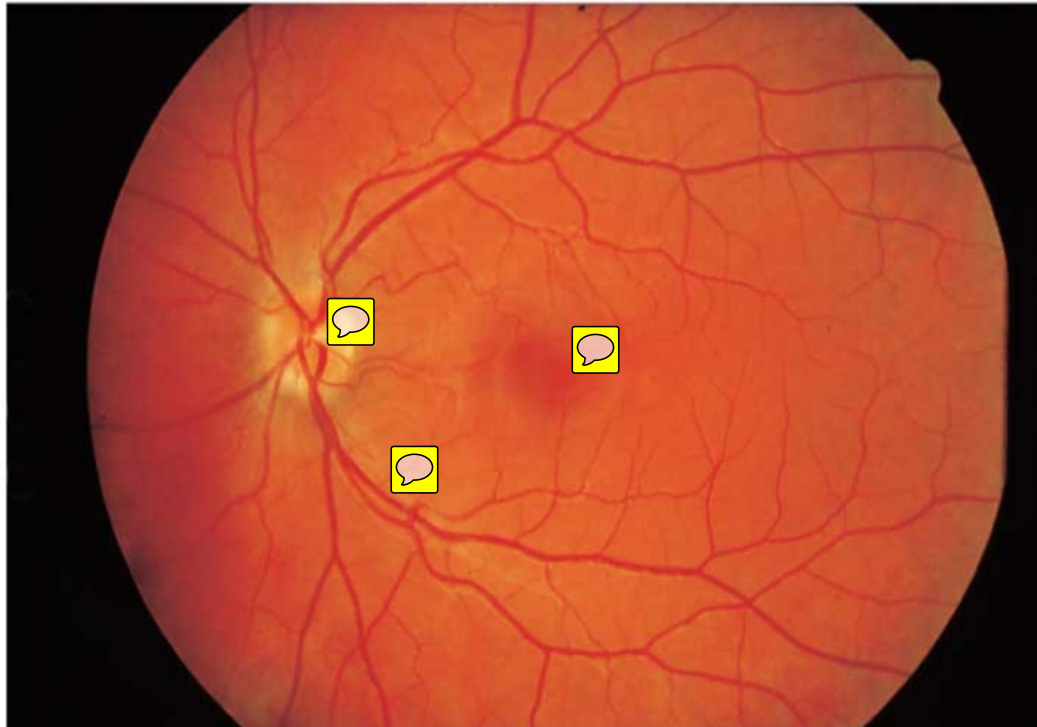


Optic fundus



Optic fundus

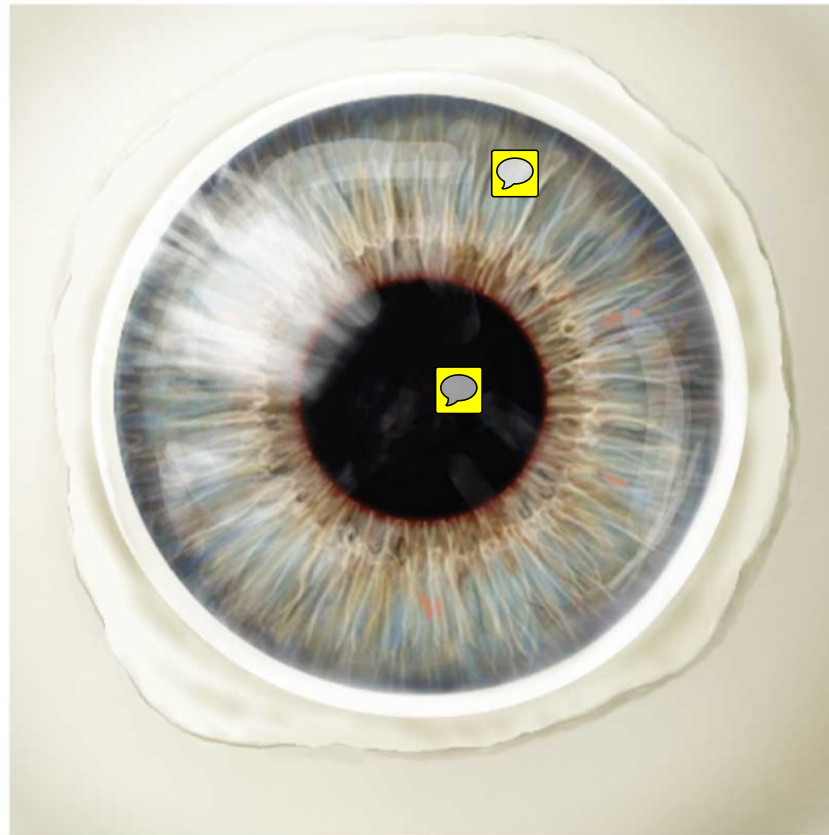
Normal optic fundus in the ophthalmoscopic examination.



Copyright ©2008-2010 by Thieme. All rights reserved.

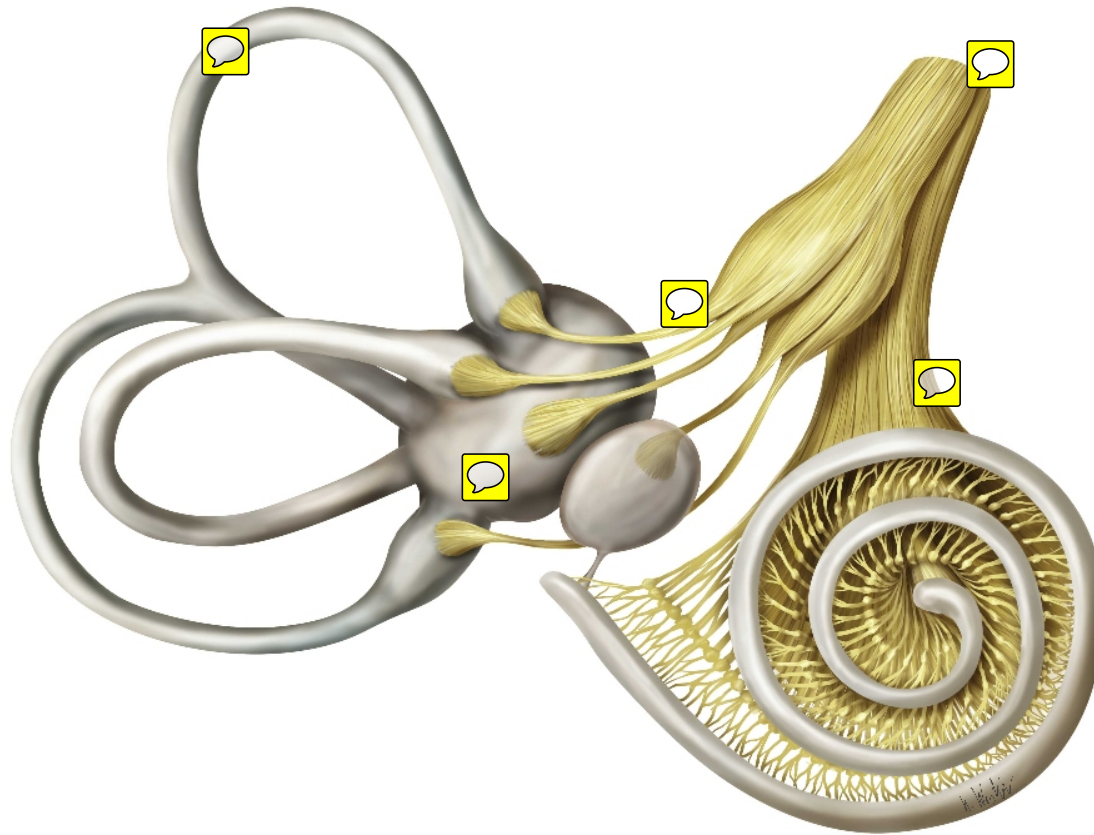
Pupil.

Normal pupil size.



Copyright ©2008-2010 by Thieme. All rights reserved.
Illustrator: Karl Wesker

Vestibular and cochlear nerves.



Vestibulocochlear nerve: Cochlear part

Anterior view of the medulla oblongata and pons.

