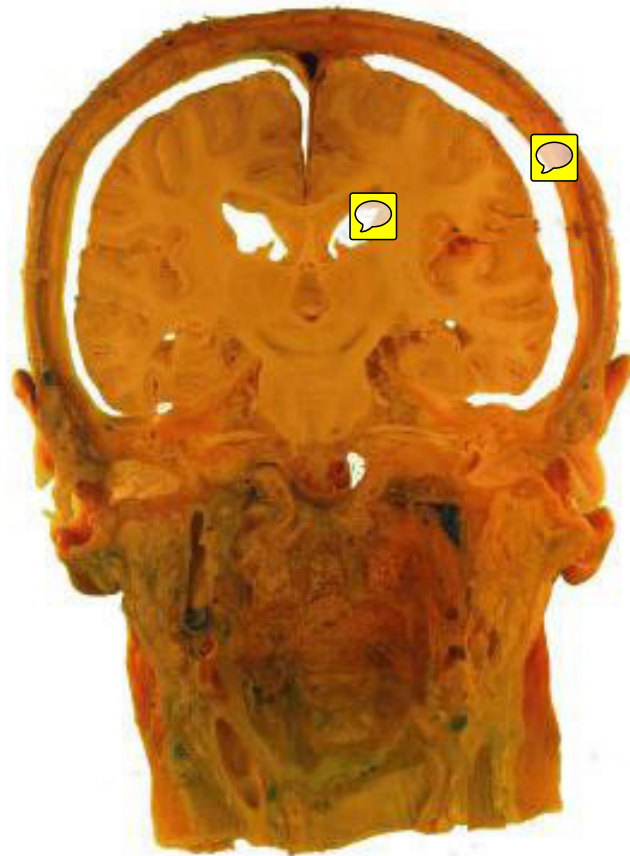


Images from Lab 2
Brain Anatomy and
Neurophysiology

Coronal Section of NS1S1

(Posterior View of brain to show the ventricles)



Coronal Section of NS1S1 (Anterior view of brain to show the ventricles)



Sagittal Section of NS1S4

(Sagittal section of head to reveal the dura mater)



Plastinated Model showing Falx Cerebri



Coronal Section of NS1S5

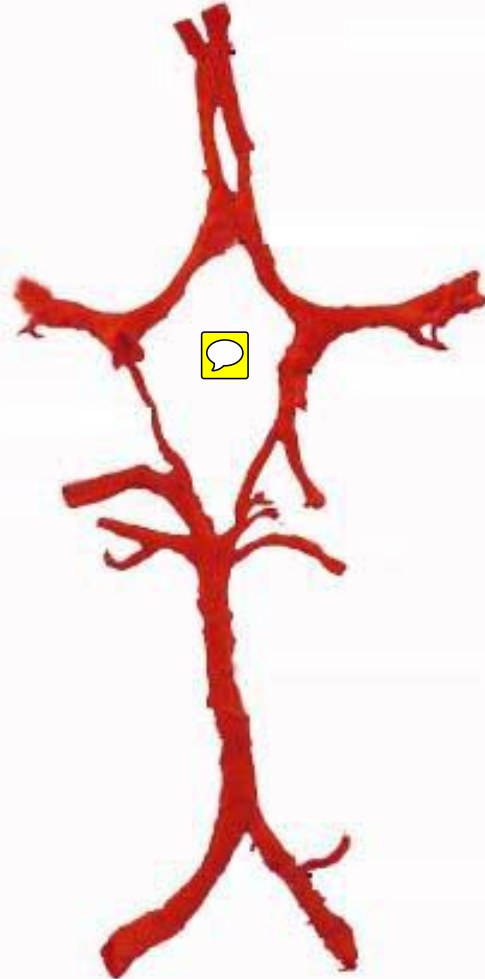
(Dissection from behind to display dura mater extensions)



McMA 180

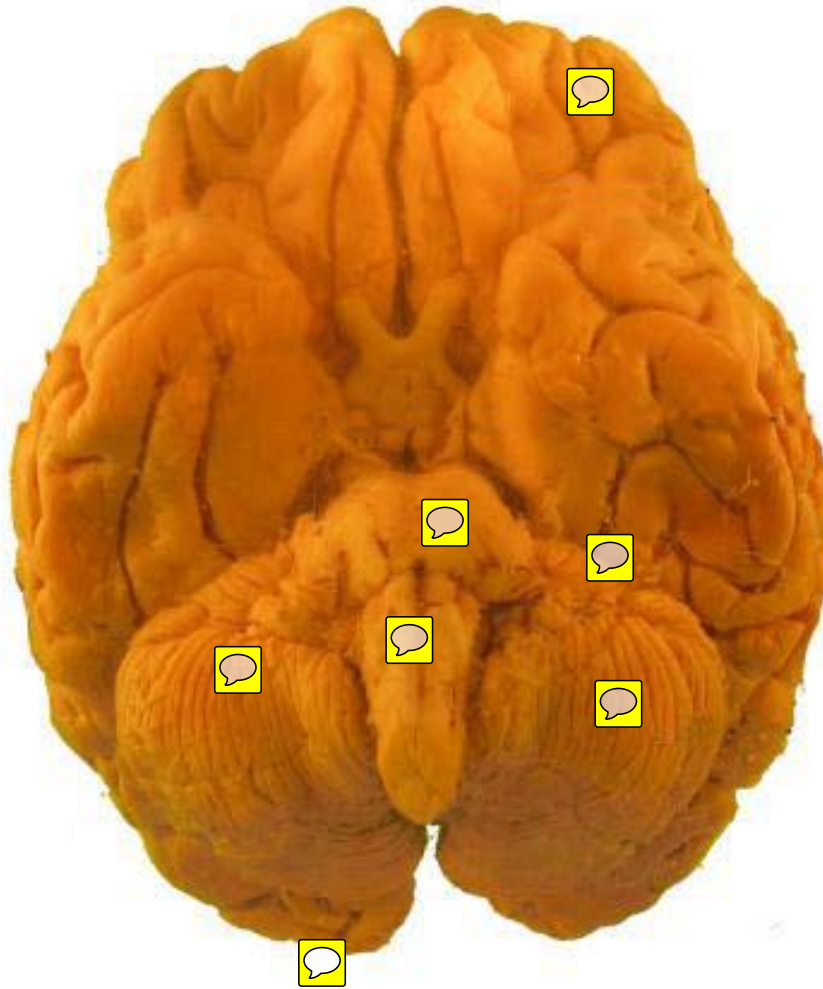


(Dissection of the Circle of Willis)



Basal View of NS8S1

(Brain showing major divisions of the cerebral vesicles)



**Human Brain
Specimen**

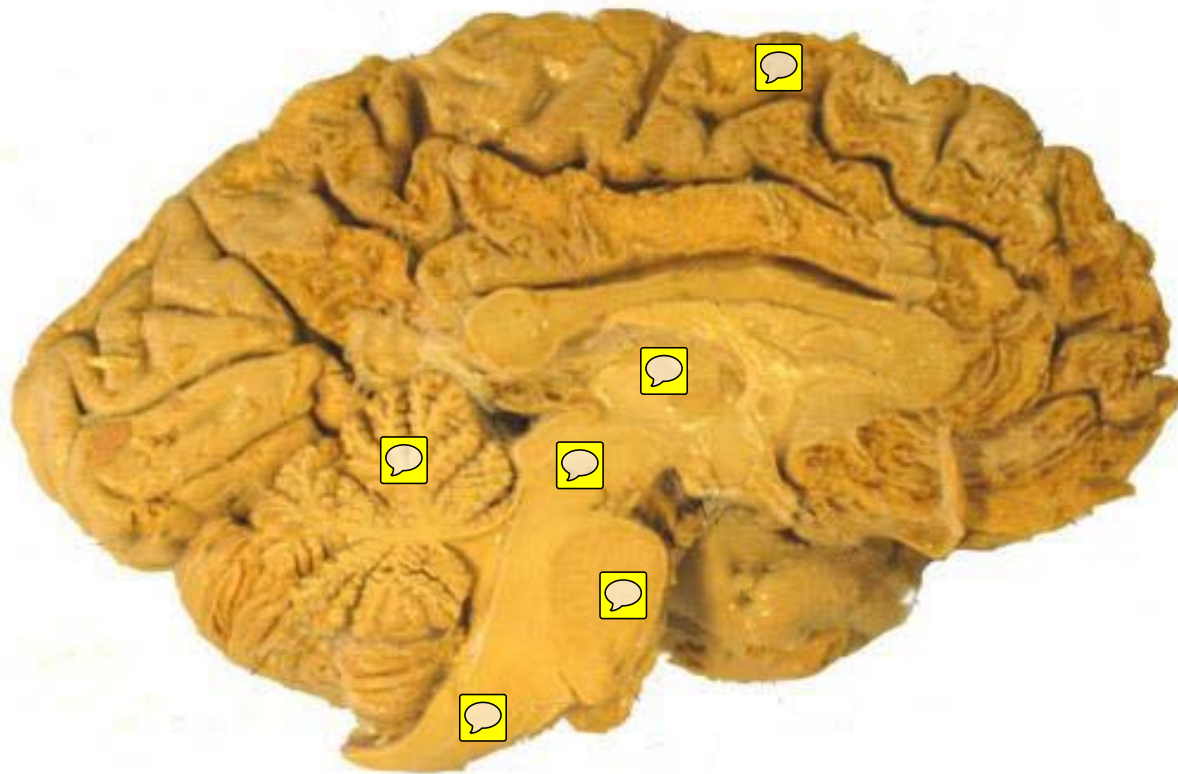
Superior View of NS8S1

(Brain showing the sulci and gyri)



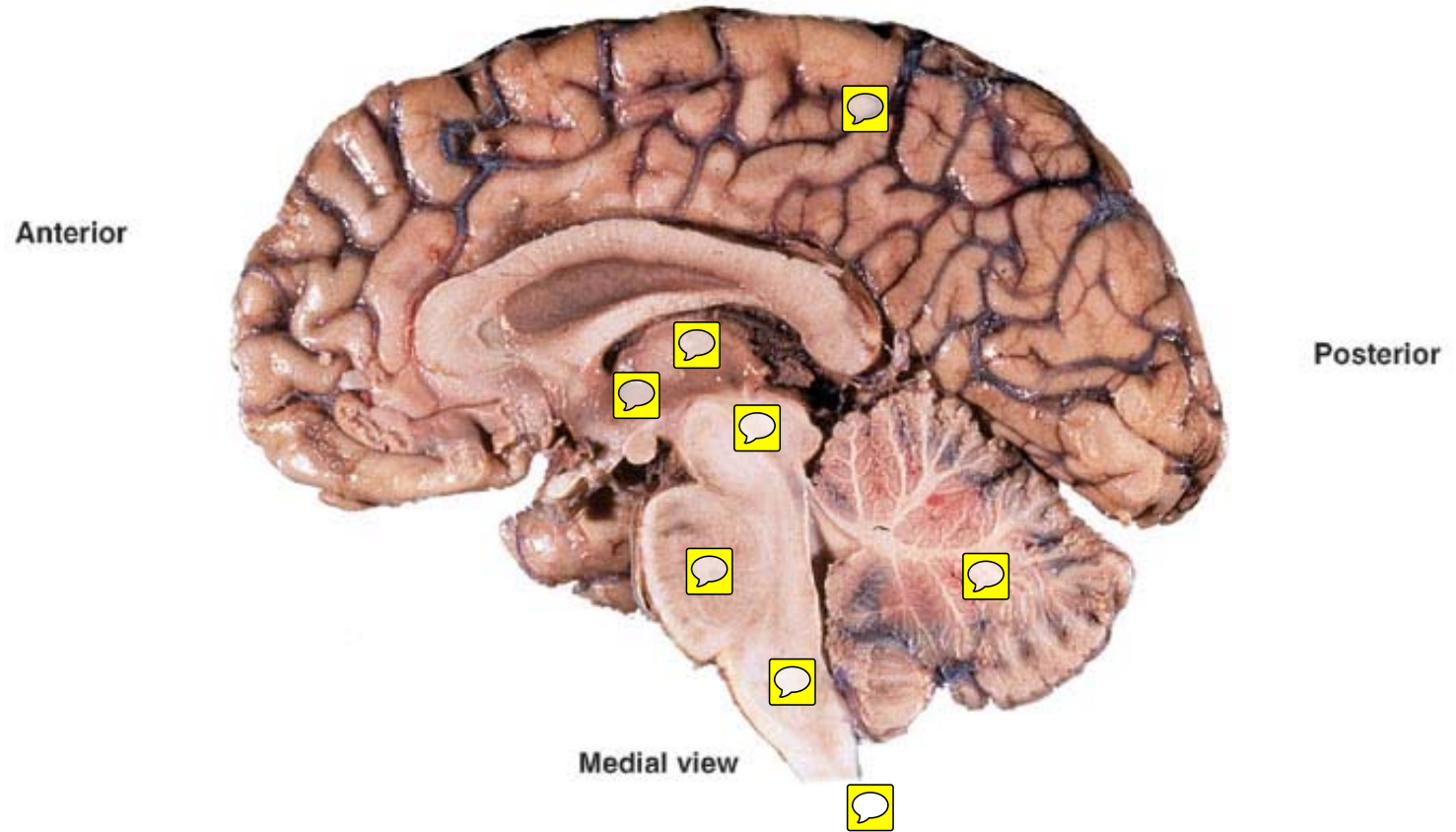
Human Brain Specimen

Mid Sagittal section of Human Brain

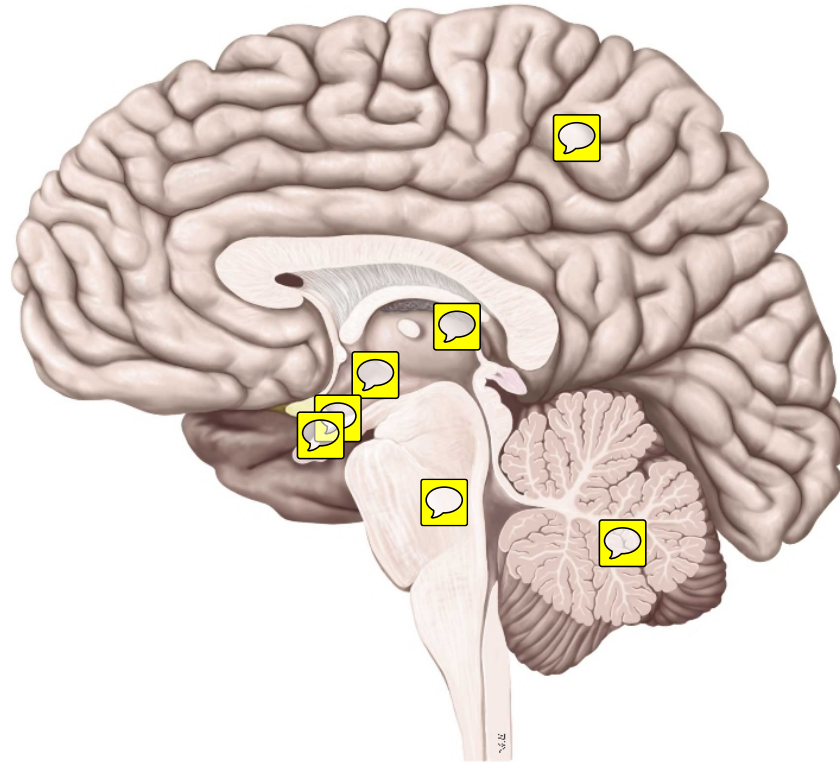


Brain

Copyright © The McGraw-Hill Companies, Inc. Permission required for reproduction or display.



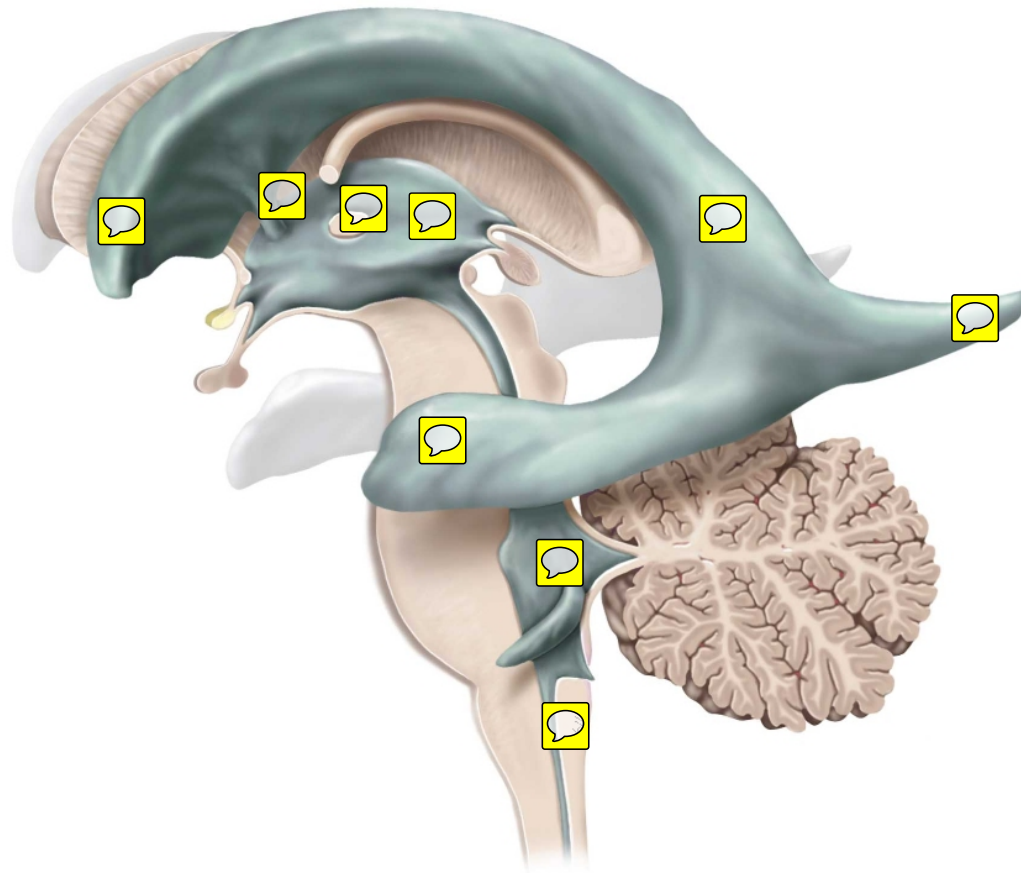
Brain - Left lateral view



Copyright ©2008-2010 by Thieme. All rights reserved.
Illustrator: Markus Voll



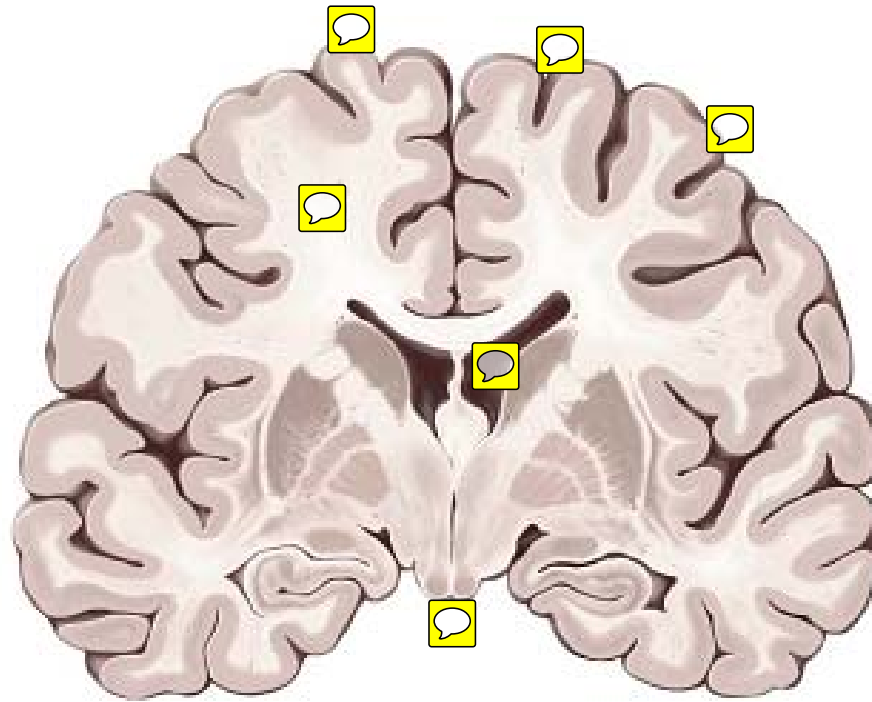
Ventricular system. Left lateral view



Copyright ©2008-2010 by Thieme. All rights reserved.
Illustrator: Markus Voll



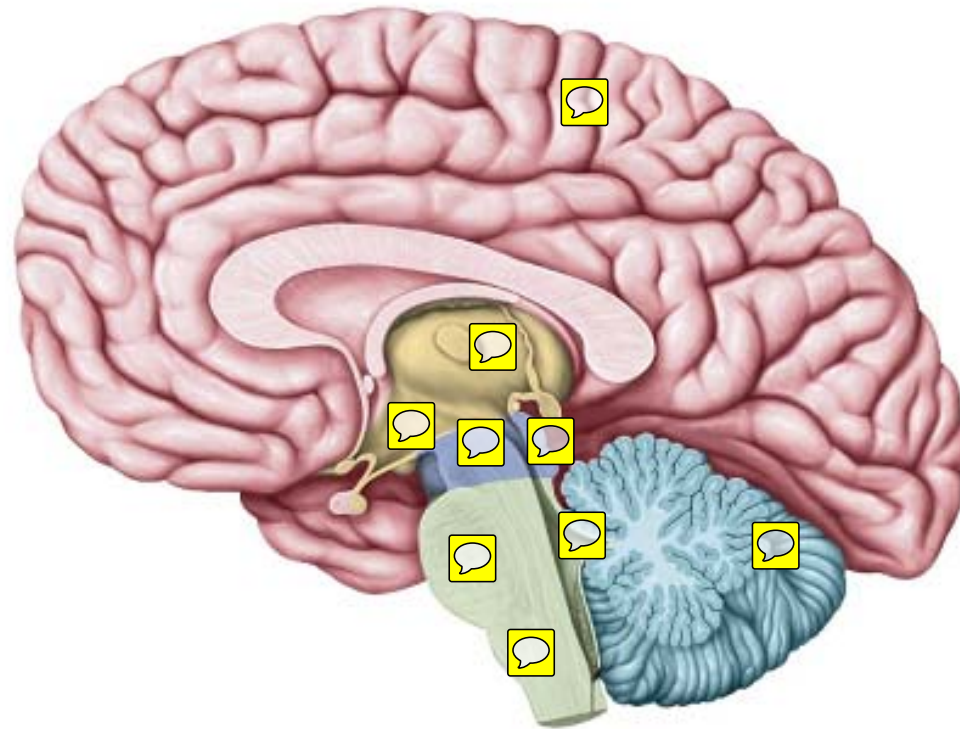
Gray and white matter in the CNS. Coronal section through the brain



Copyright ©2008-2010 by Thieme. All rights reserved.
Illustrator: Markus Voll



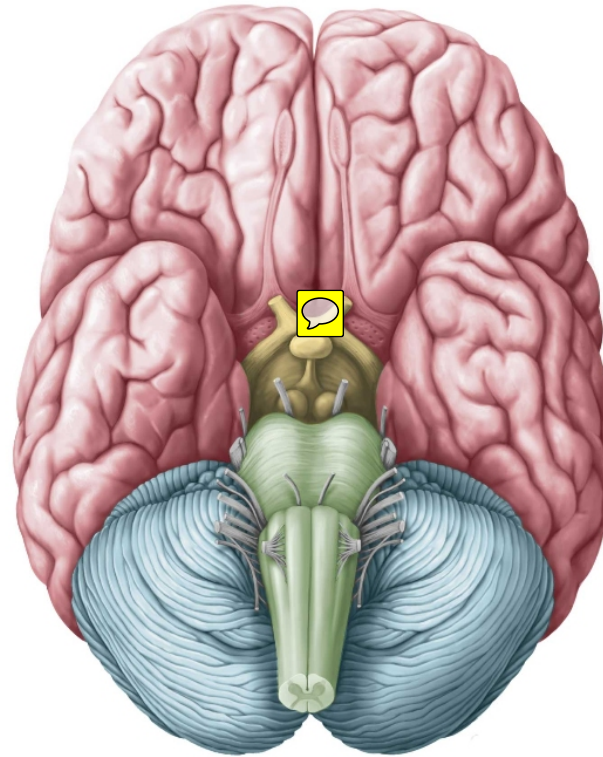
Adult brain - midsagittal section showing the right hemisphere



Copyright ©2008-2010 by Thieme. All rights reserved.
Illustrator: Markus Voll



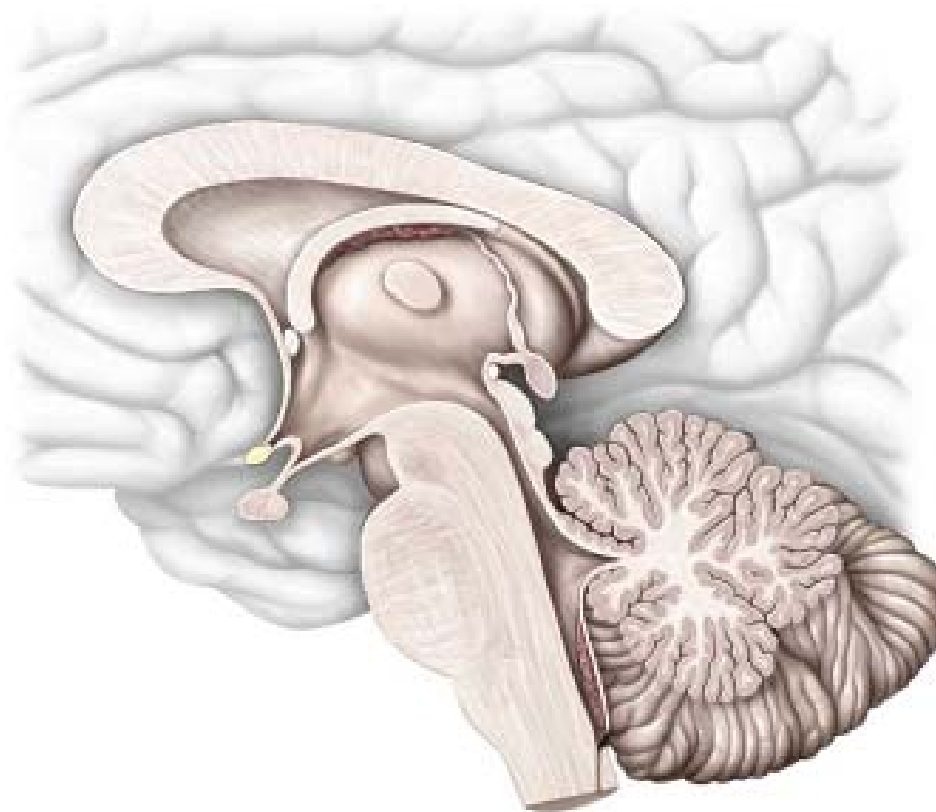
Adult brain – basal/inferior view



Copyright ©2008-2010 by Thieme. All rights reserved.
Illustrator: Markus Voll



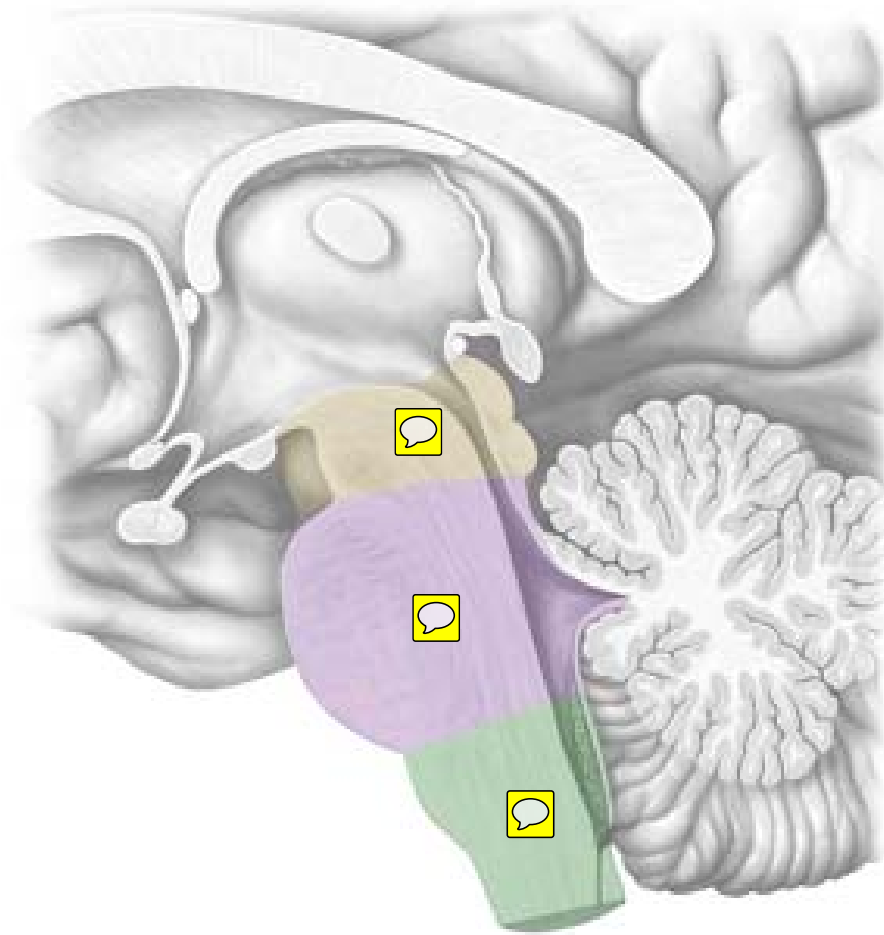
Brainstem, and cerebellum, left lateral view - midsagittal section



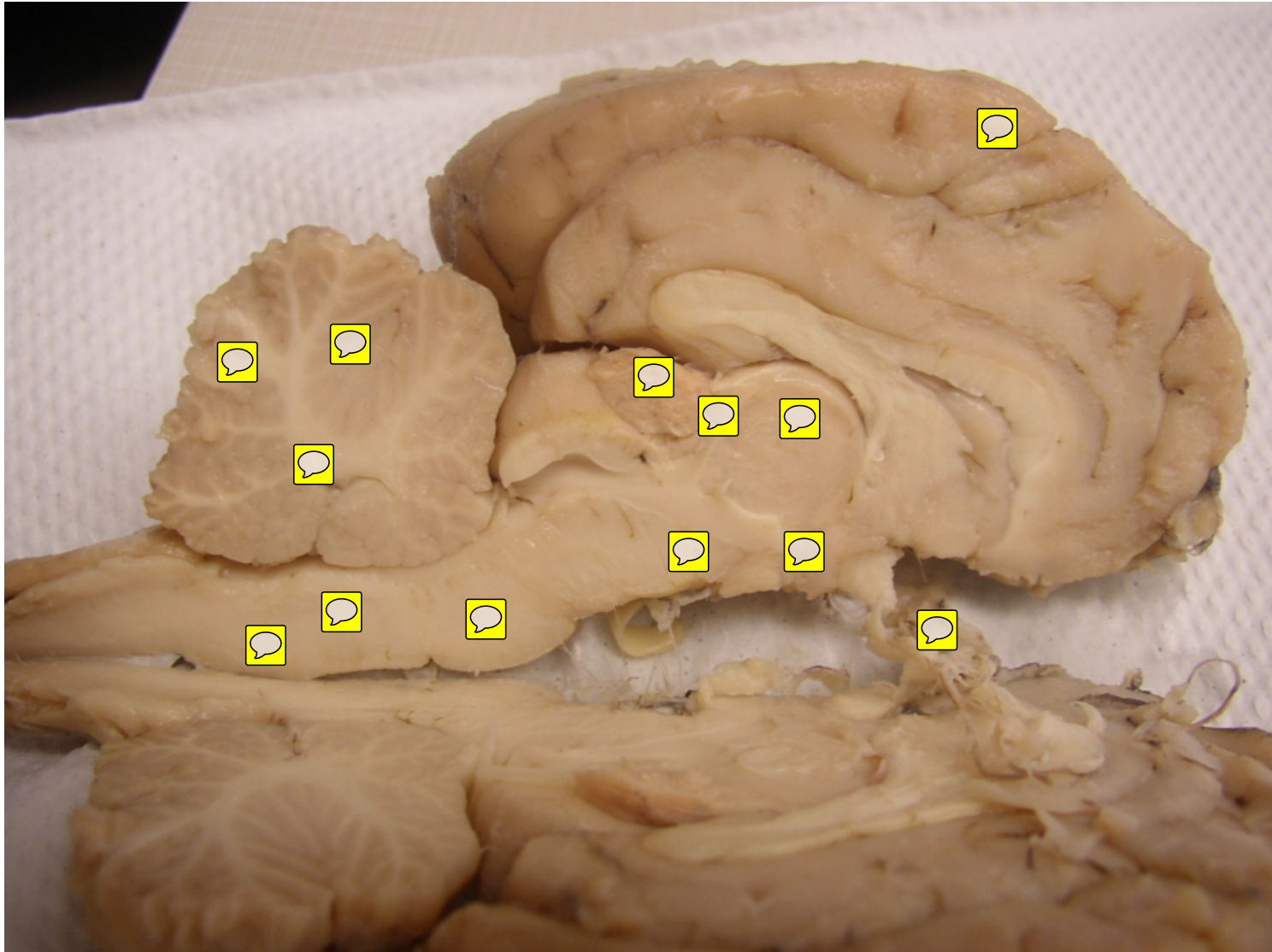
Illustrator: Markus Voll



Brainstem. Levels of the brainstem



Sagittal section, medial view of sheep brain



Lab Tutor tracing from the Nerve Conduction experiment

