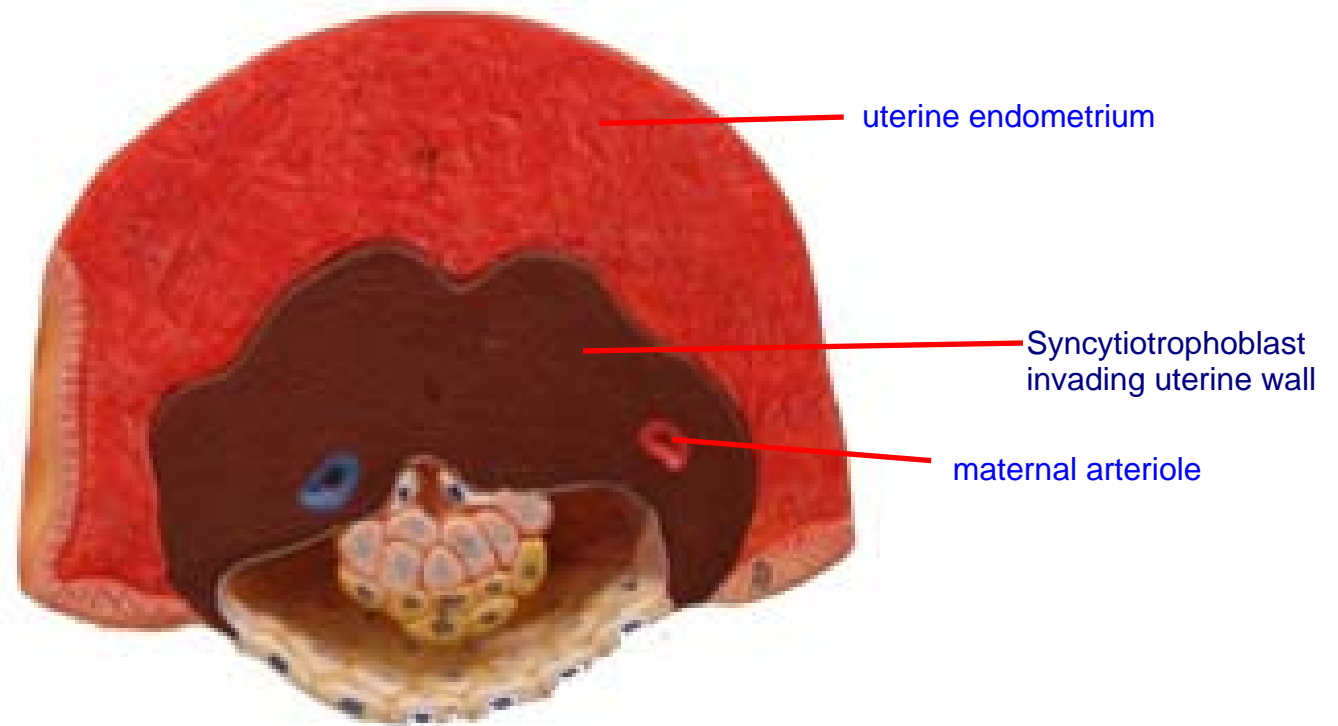


LAB 1

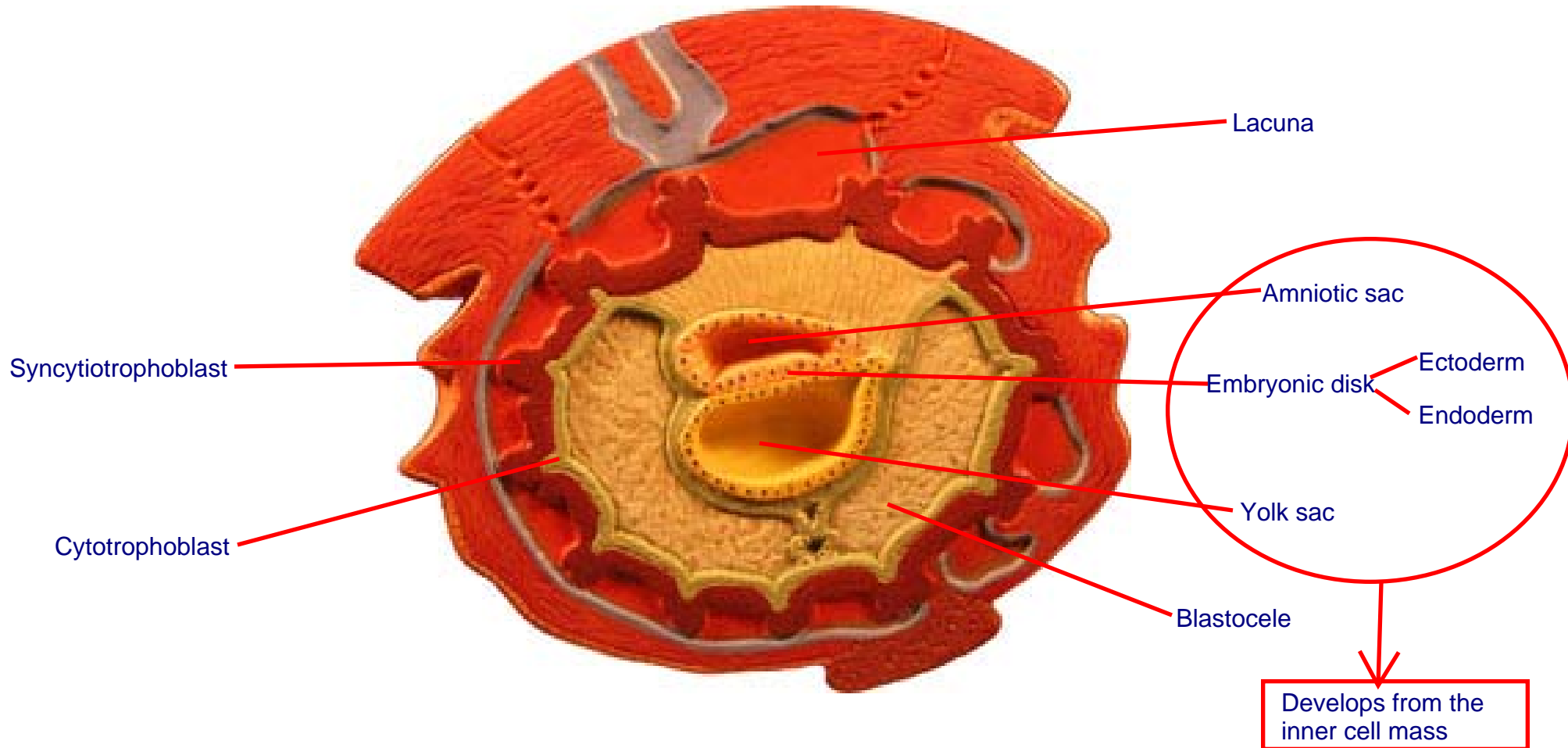
Tissues and Embryology

IMAGES

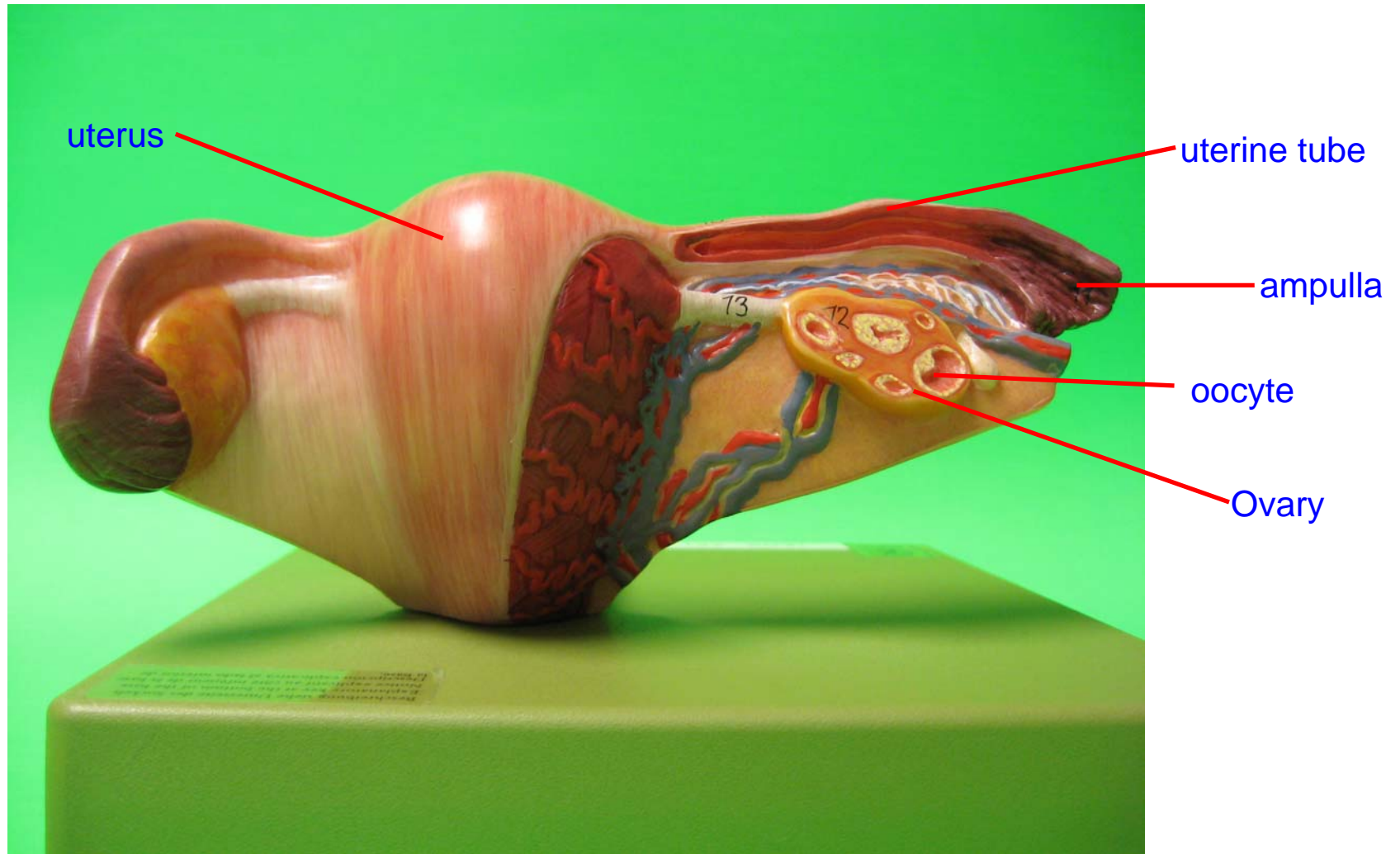
GD 2 S1: Blastocyst invading uterine wall



GD 1 S7 : formation of germ layers after implantation

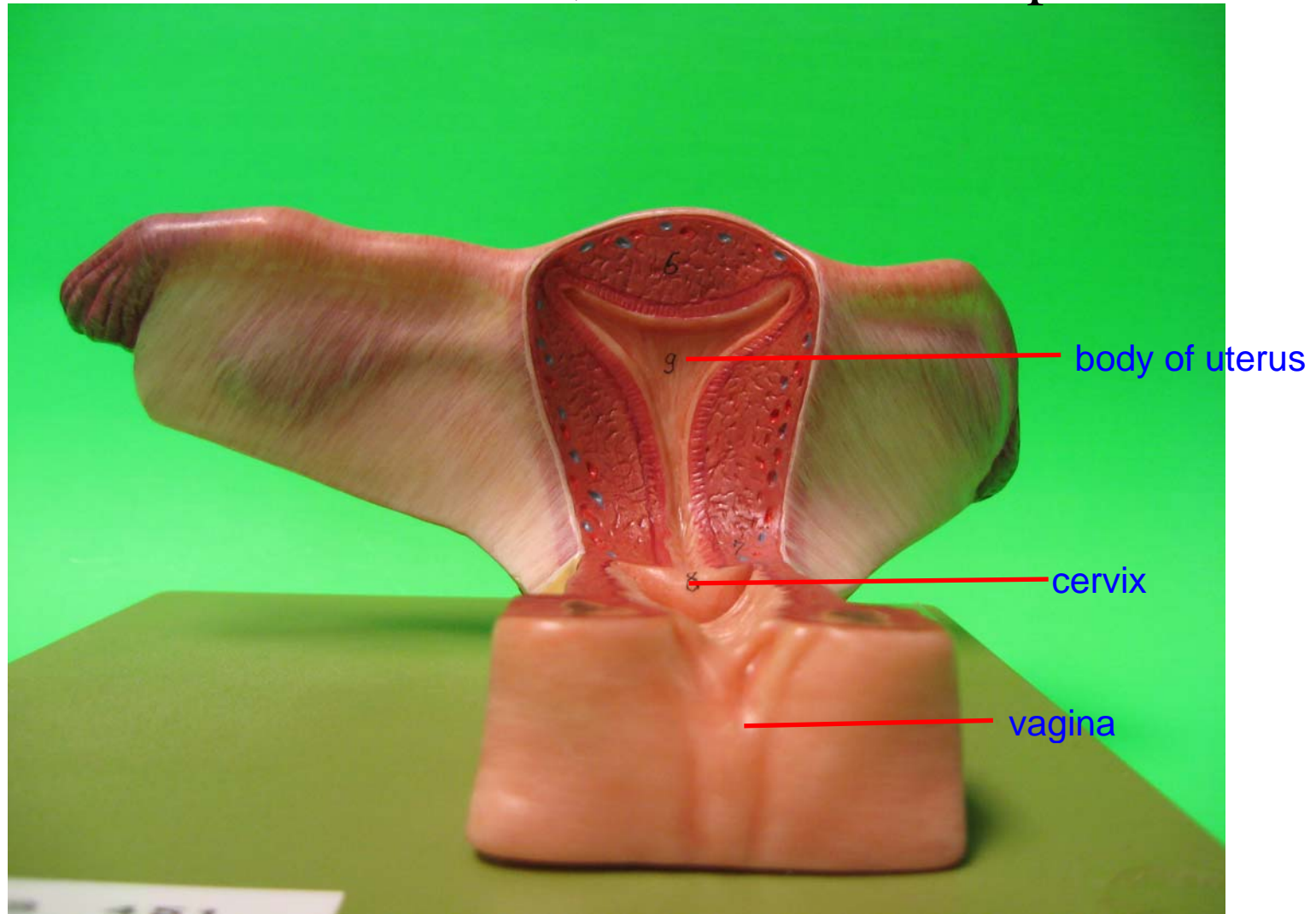


PE 3 S6 Model of uterus, ovaries and fallopian tubes



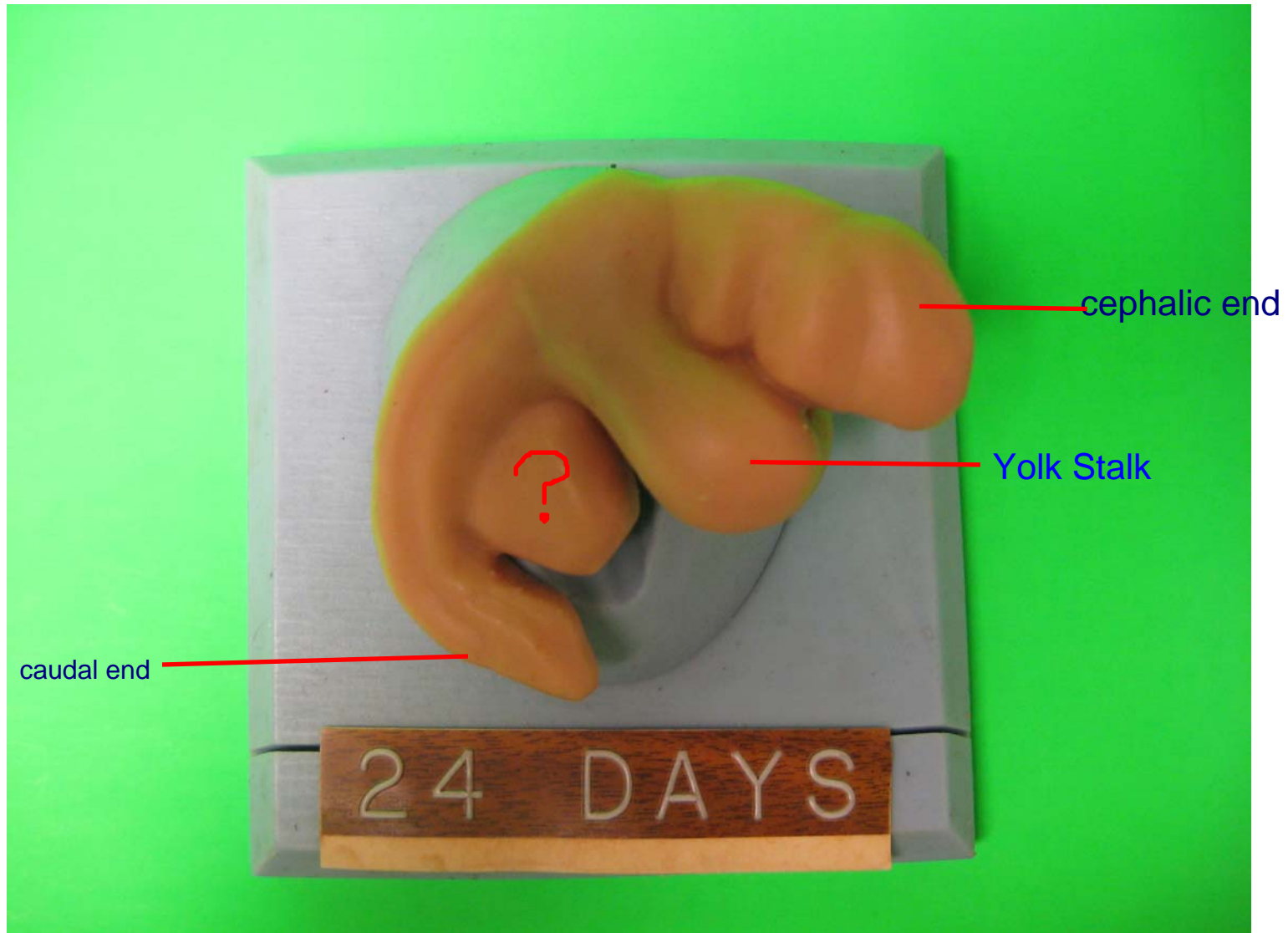
Posterior View – Frontal section

PE 3 S6 Model of uterus, ovaries and fallopian tubes

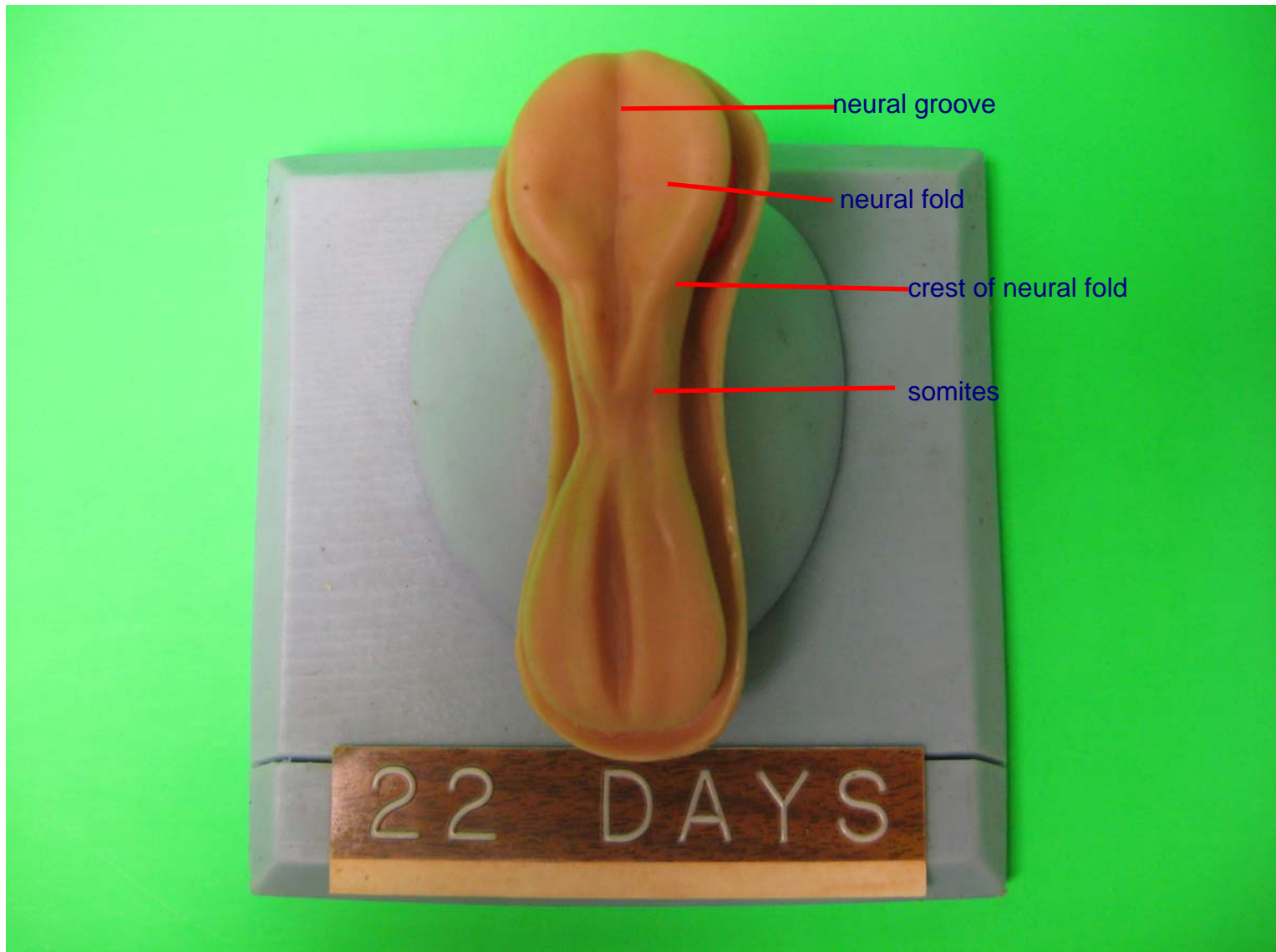


Anterior View – frontal section

Embryo at 24 days after fertilization

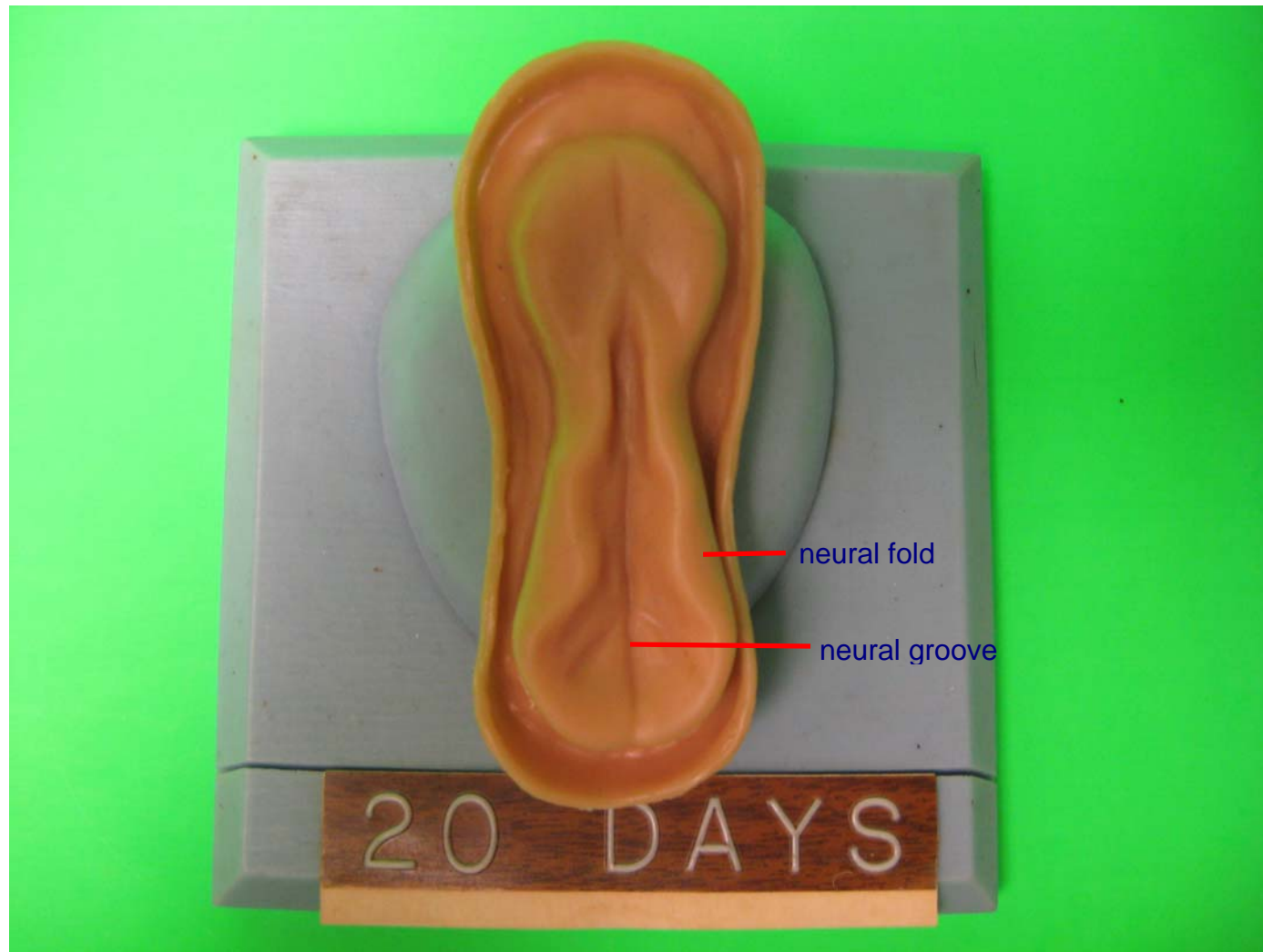


Embryo at 22 days after fertilization-detailed view of the Neural Tube Formation



Embryo at 20 days after fertilization

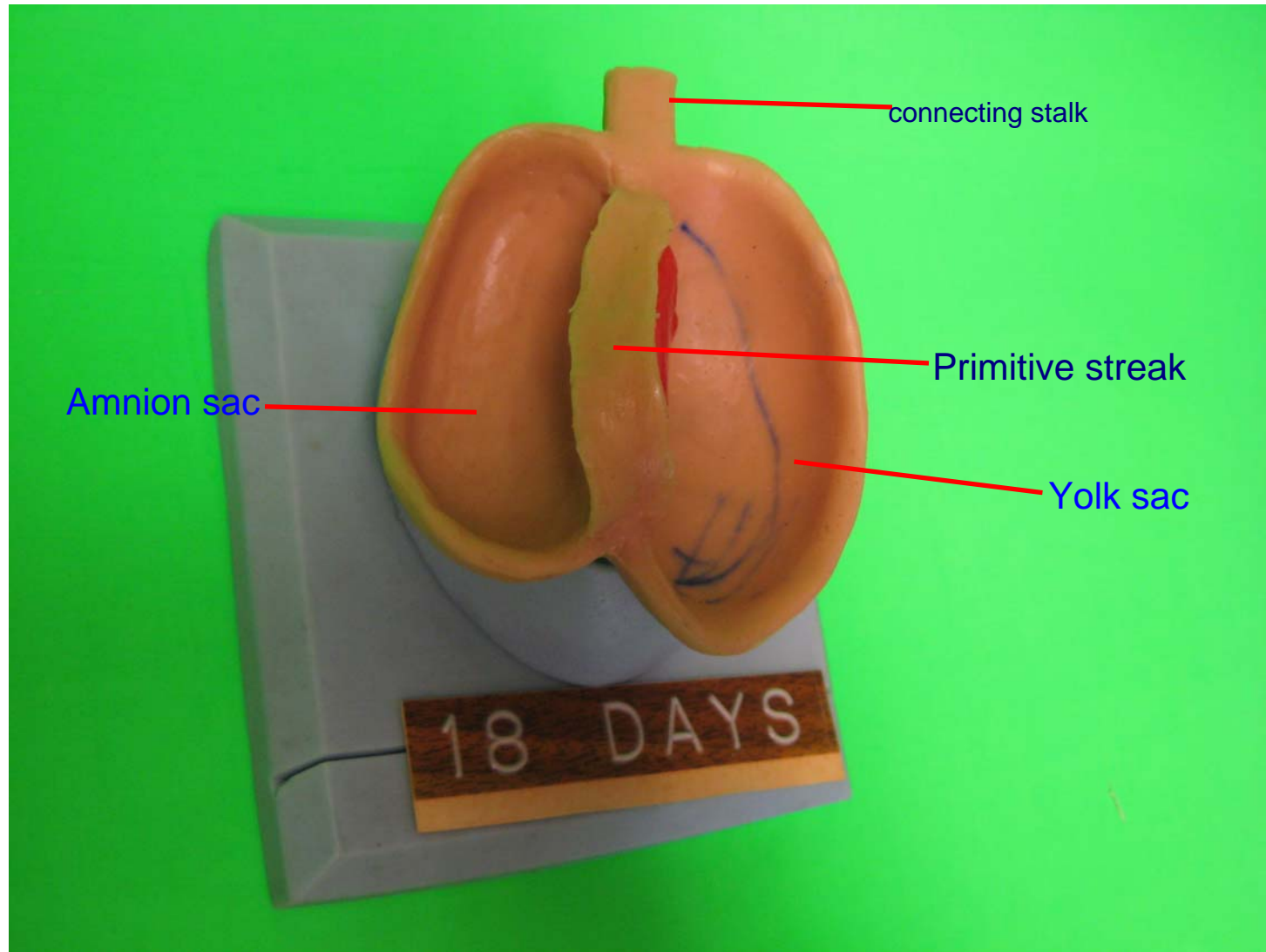
- detailed view of the Neural Tube Formation



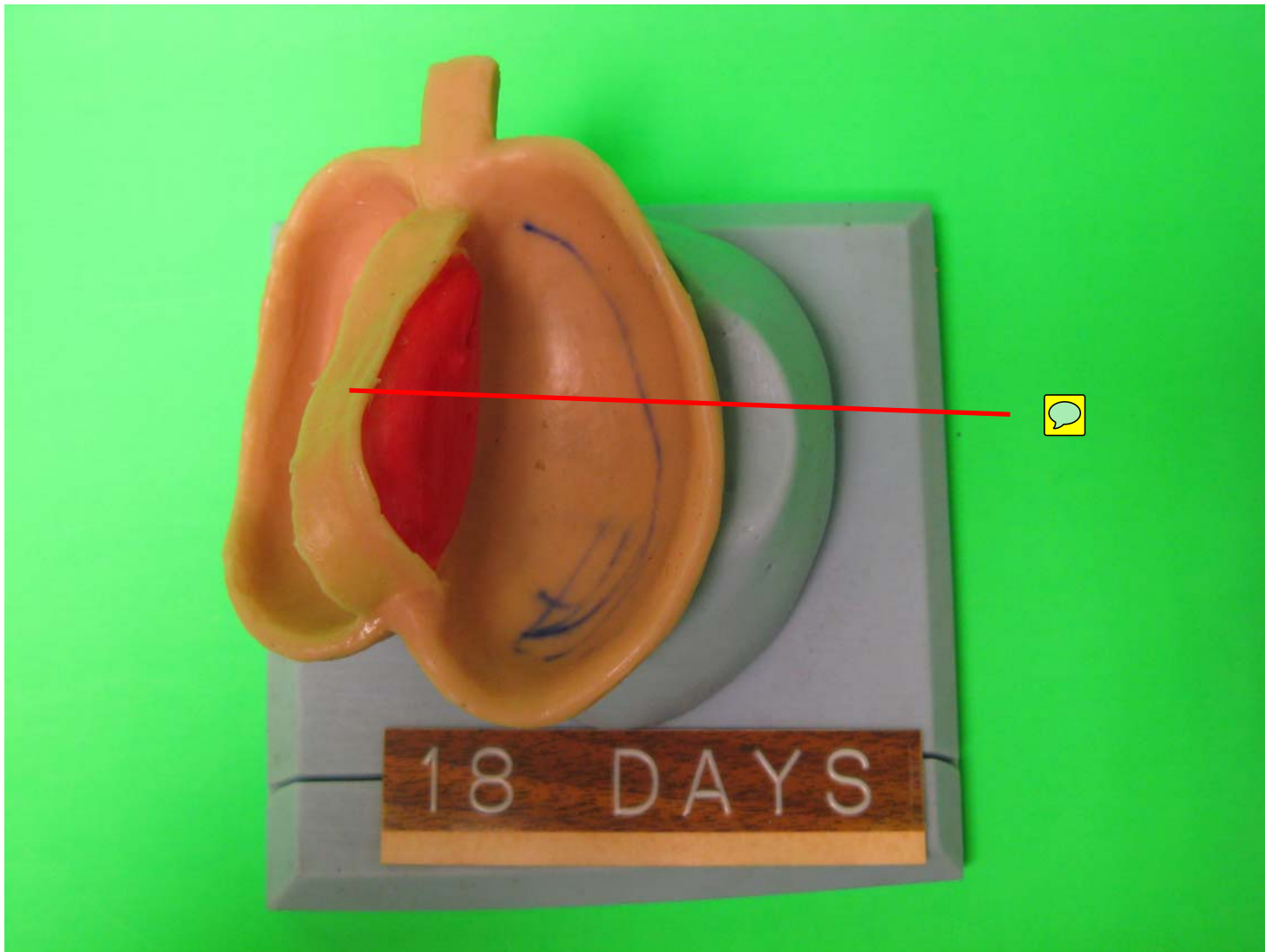
Embryo at 18 days after fertilization



Embryo at 18 days after fertilization

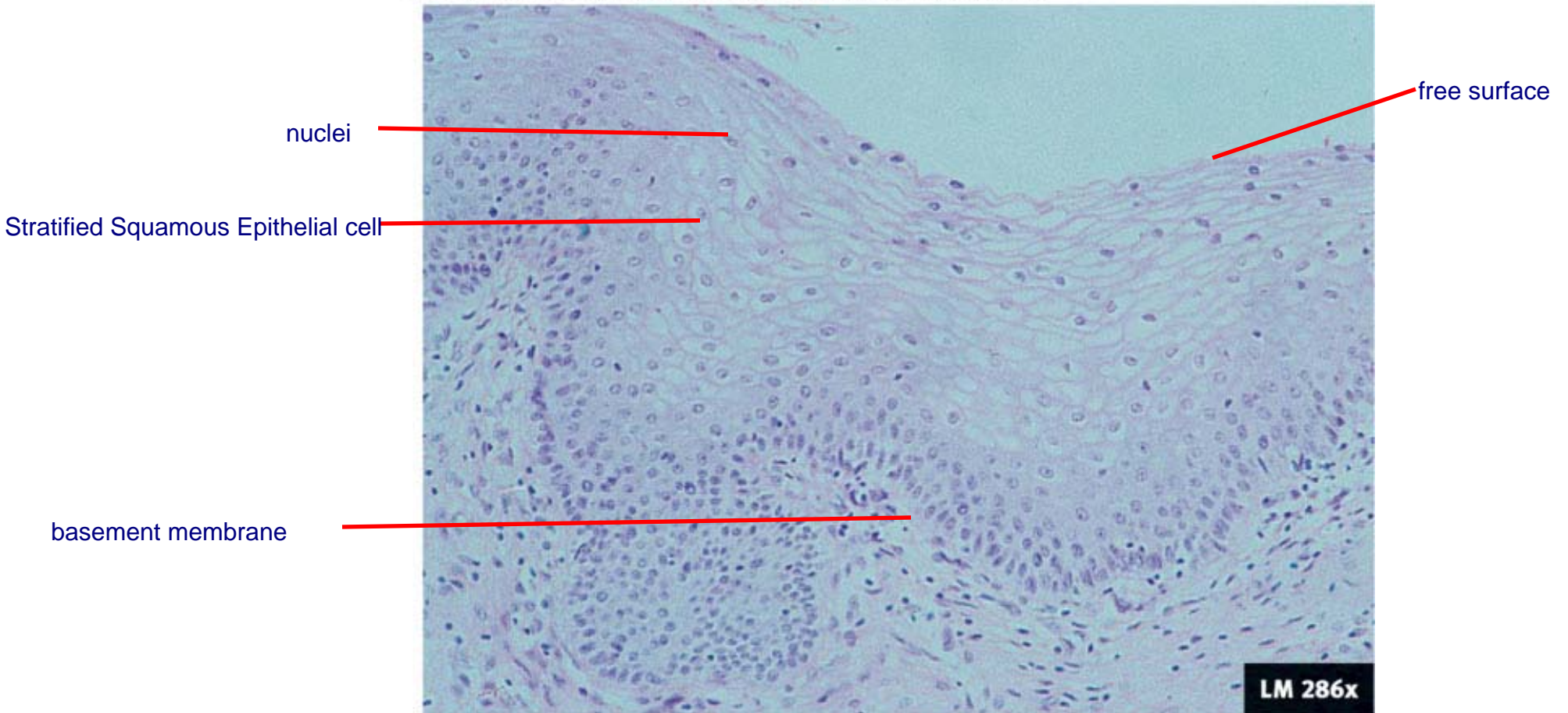


Embryo at 18 days after fertilization



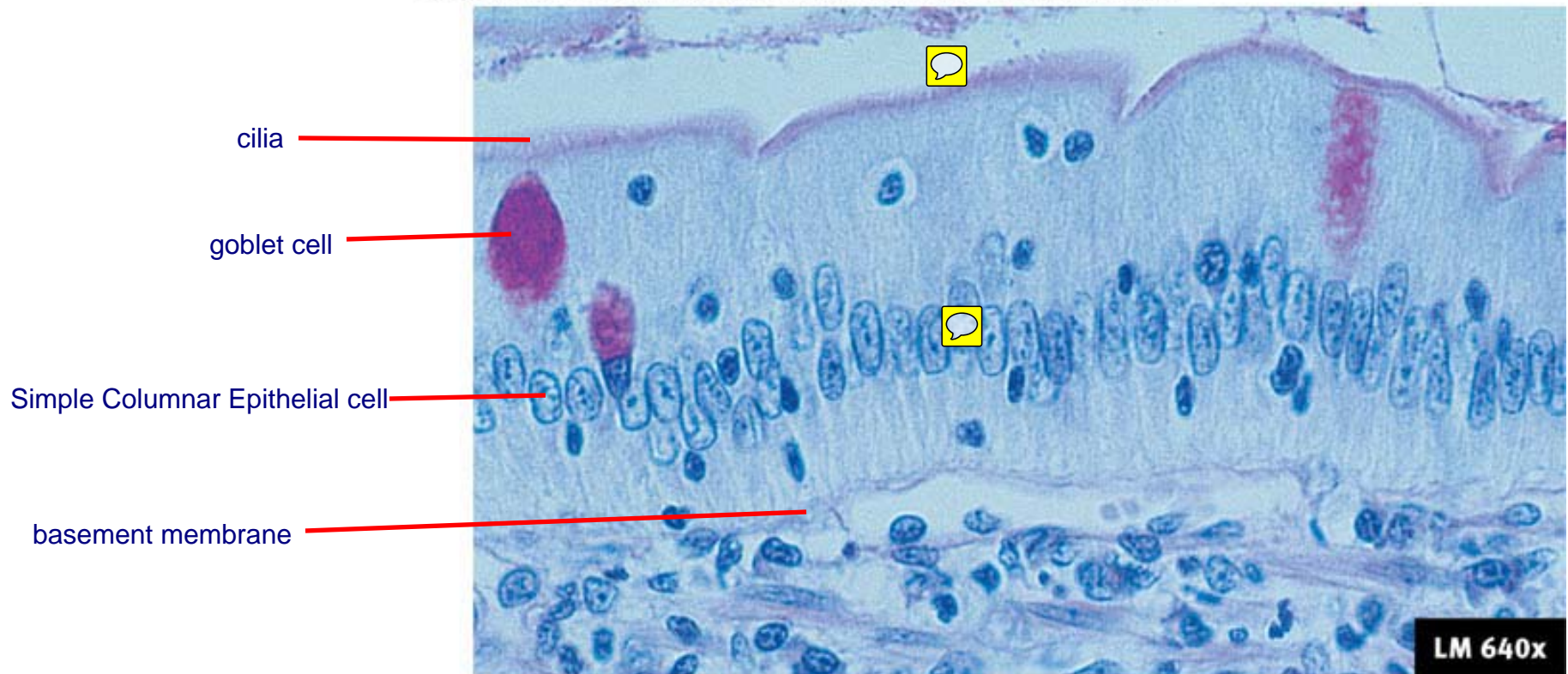
Stratified Squamous Epithelium (non-keratinized)

Copyright © The McGraw-Hill Companies, Inc. Permission required for reproduction or display.



Simple Columnar Epithelium

Copyright © The McGraw-Hill Companies, Inc. Permission required for reproduction or display.



Simple Cuboidal Epithelium

Copyright © The McGraw-Hill Companies, Inc. Permission required for reproduction or display.

Simple cuboidal
epithelial cell

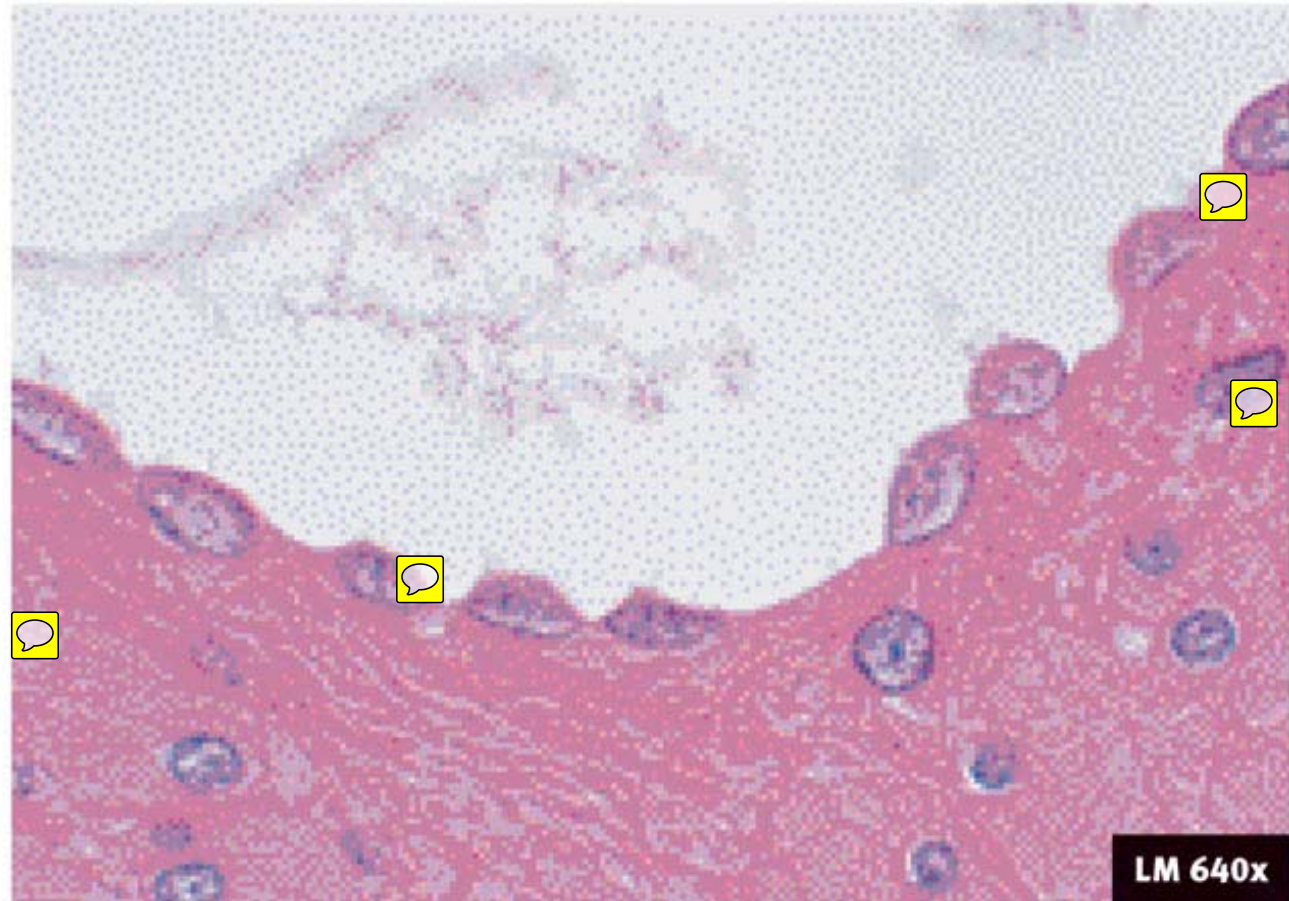
Free surface

basement membrane



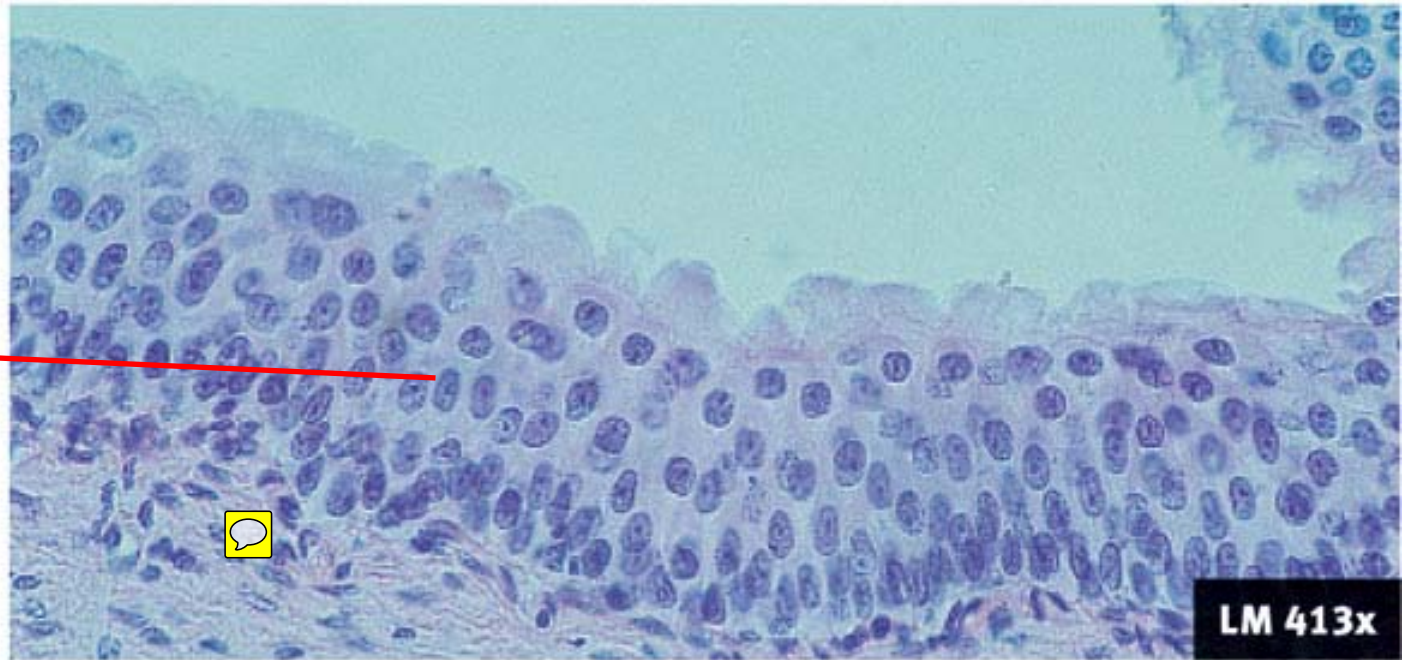
Simple Squamous Epithelium

Copyright © The McGraw-Hill Companies, Inc. Permission required for reproduction or display.



Pseudostratified Epithelium

Copyright © The McGraw-Hill Companies, Inc. Permission required for reproduction or display.

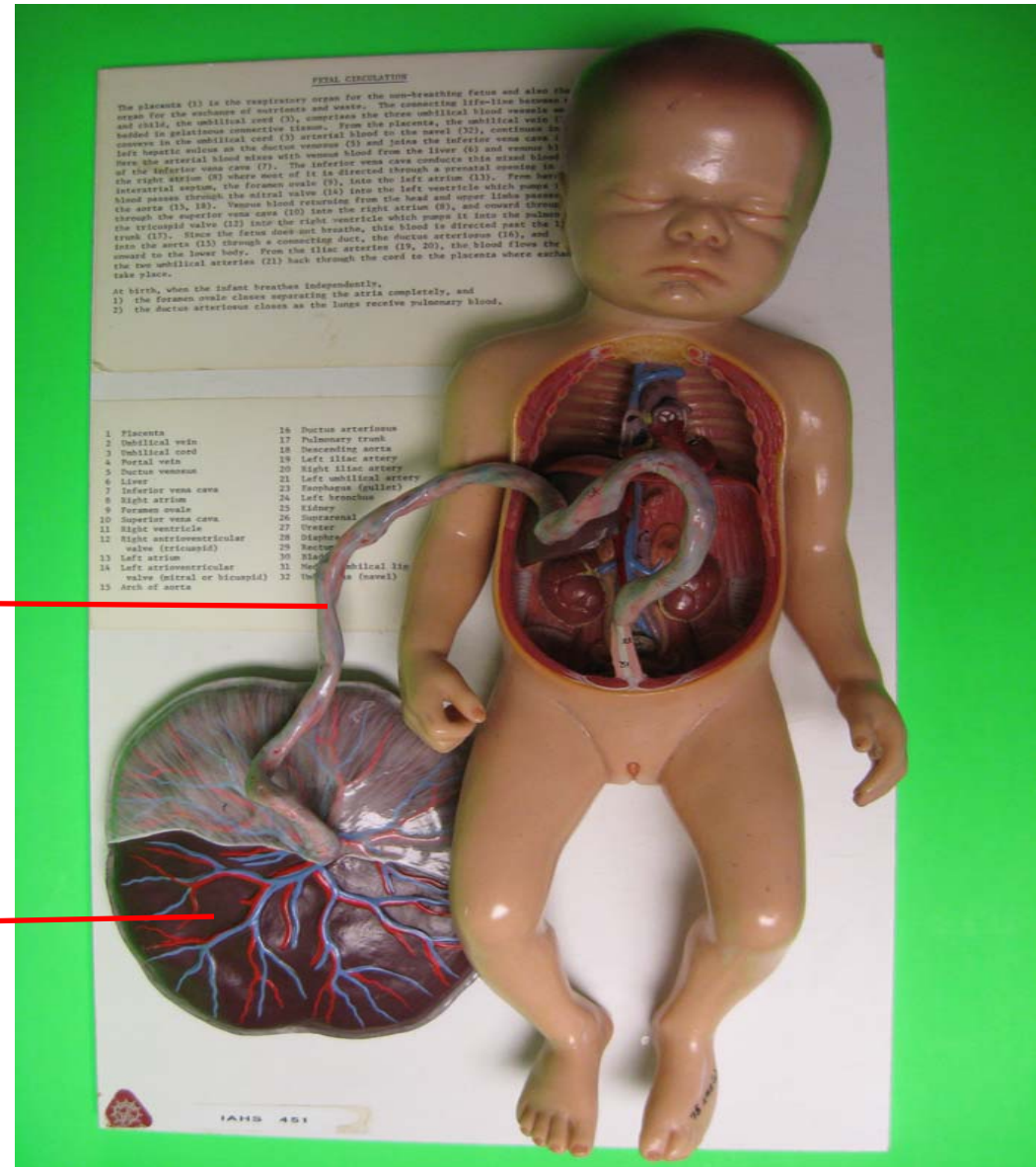


translational epithelial cell

Model showing circulation in fetus

Umbilical cord

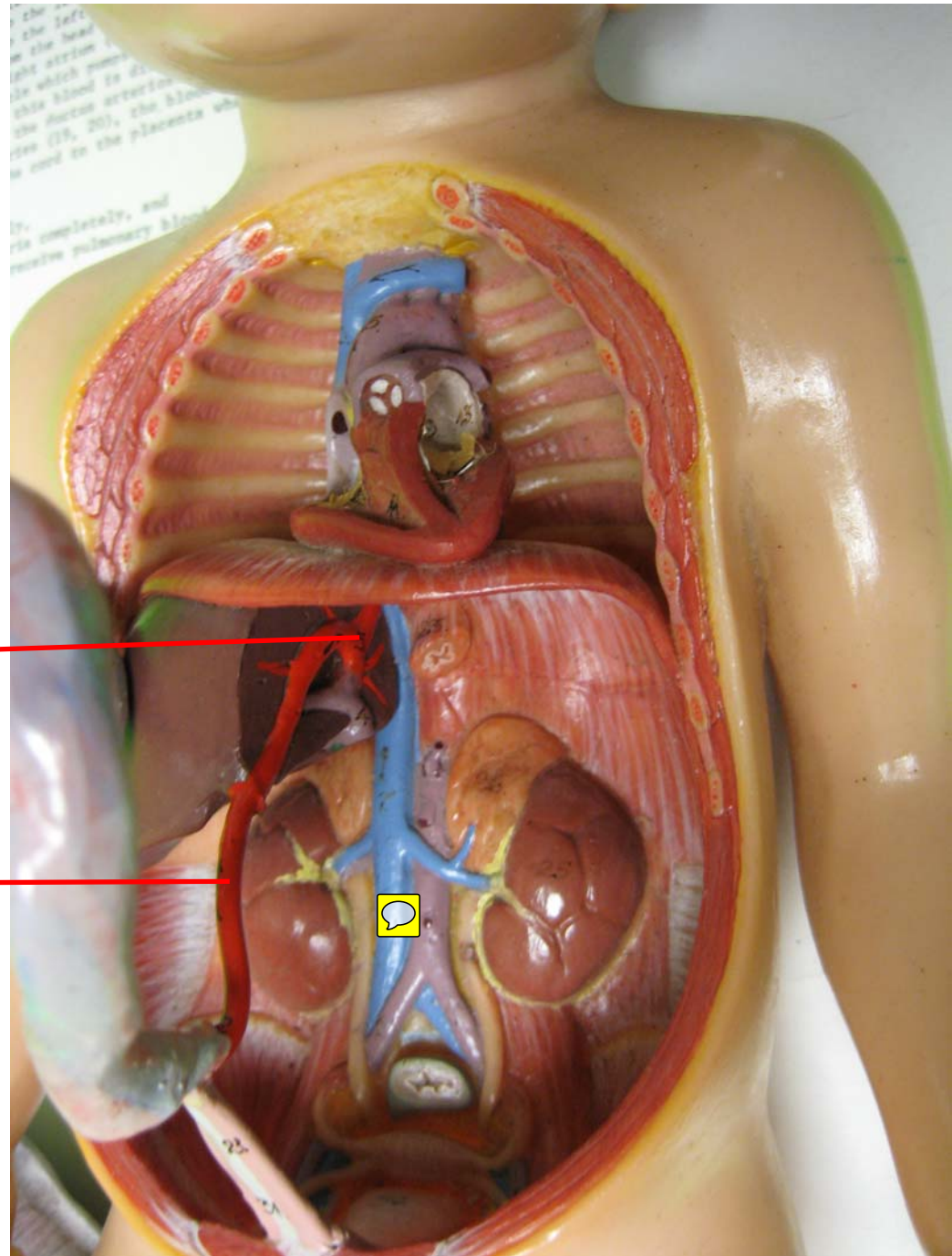
Placenta



Model showing circulation in fetus

Ductus venosus

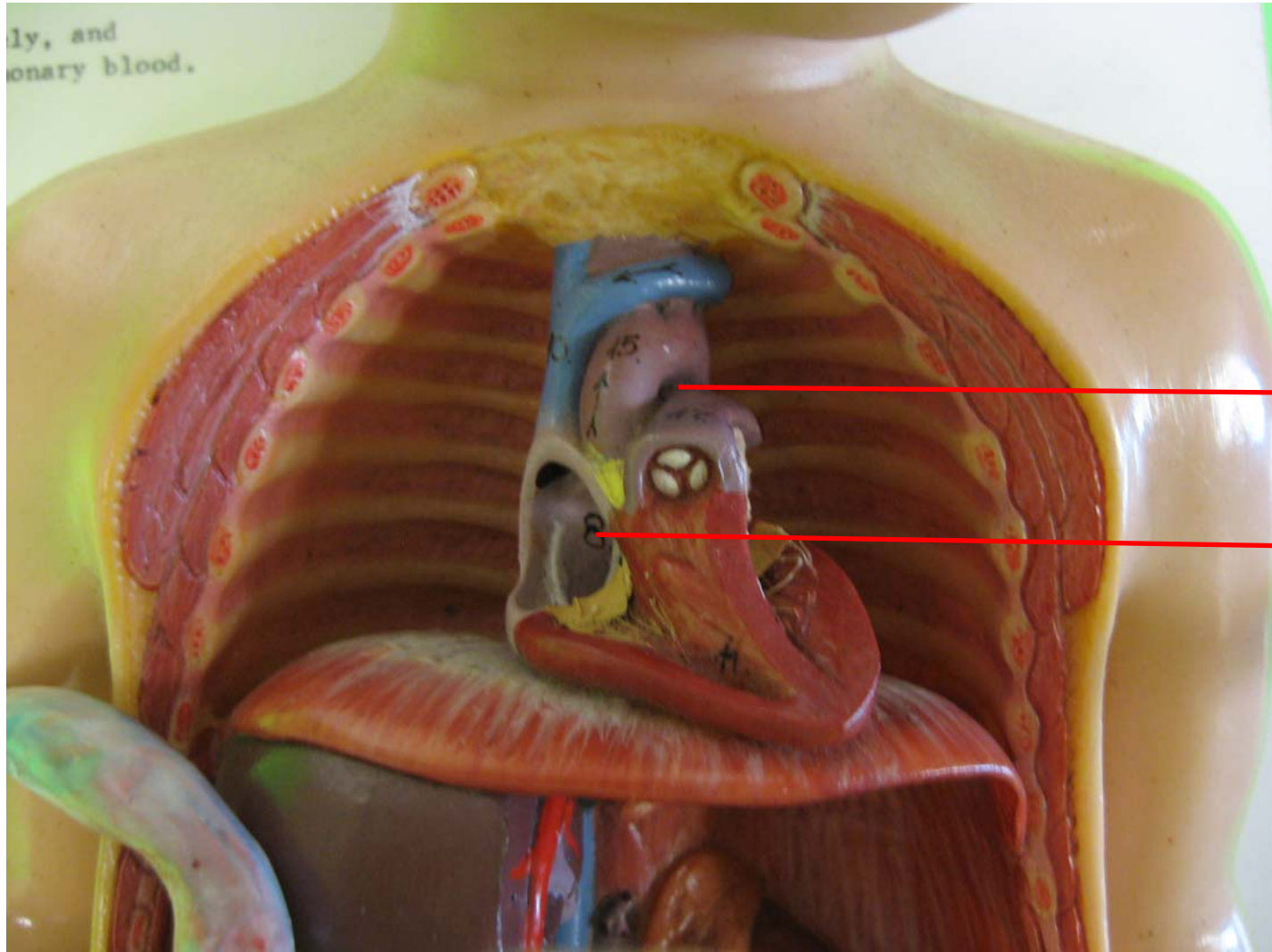
Umbilical vein



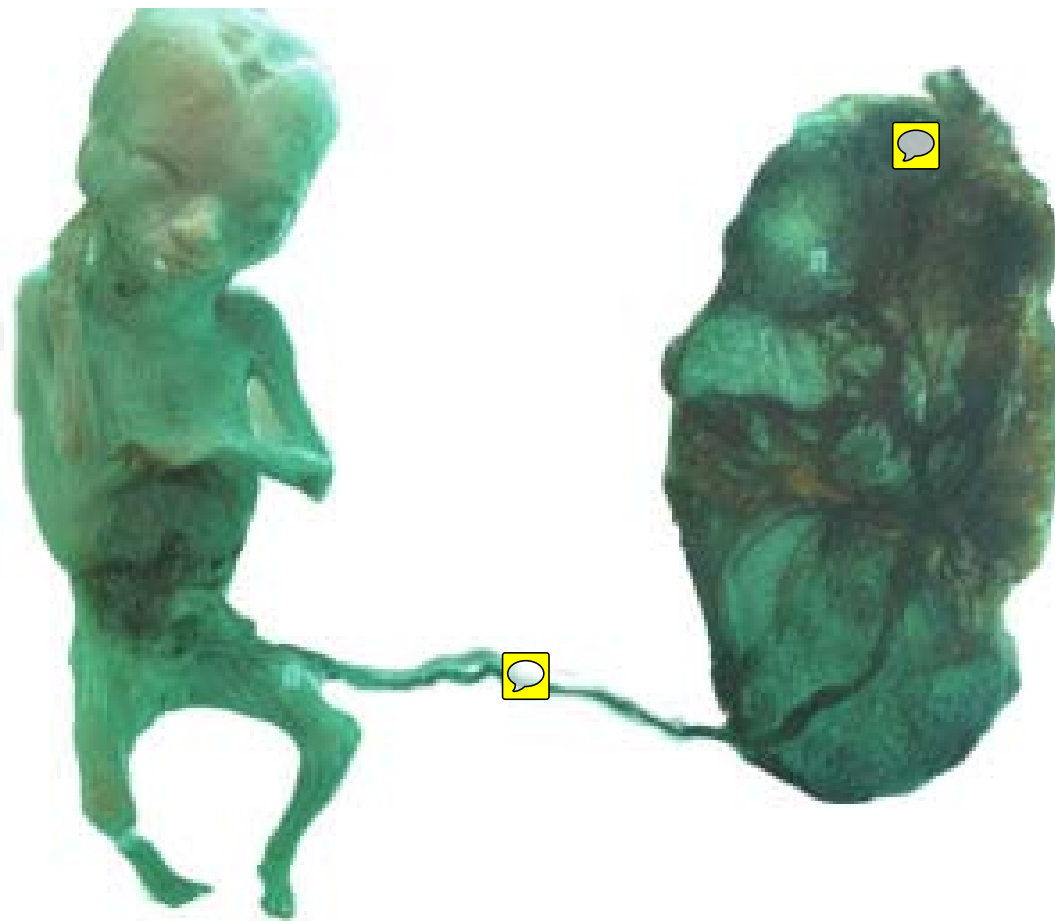
Model
showing
circulation
in fetus



Model showing circulation in fetus

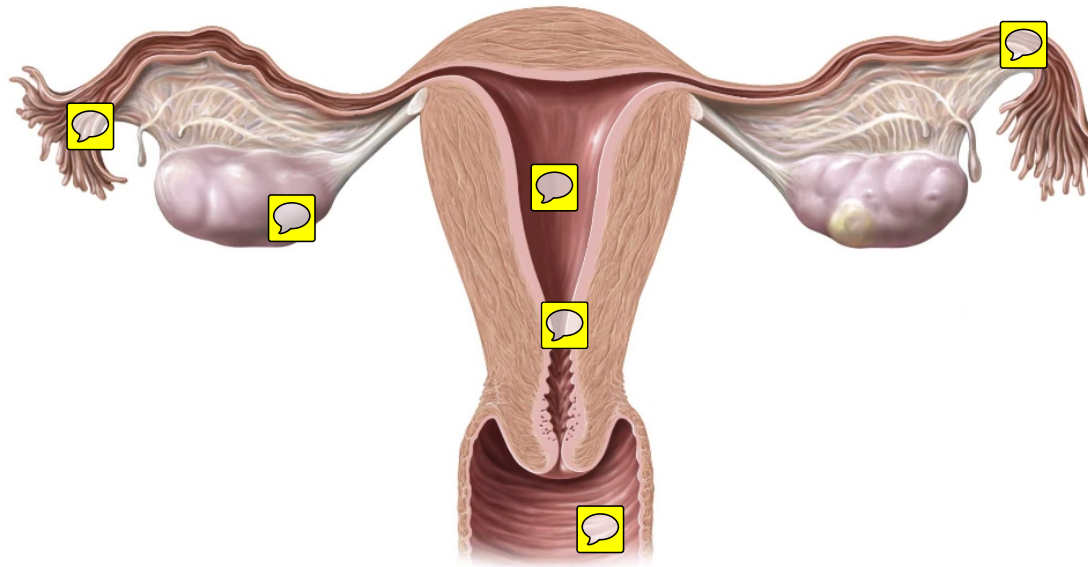


Block Specimen with Fetus and Placenta



Uterus and uterine tube

Coronal section, posterior view with uterus straightened.

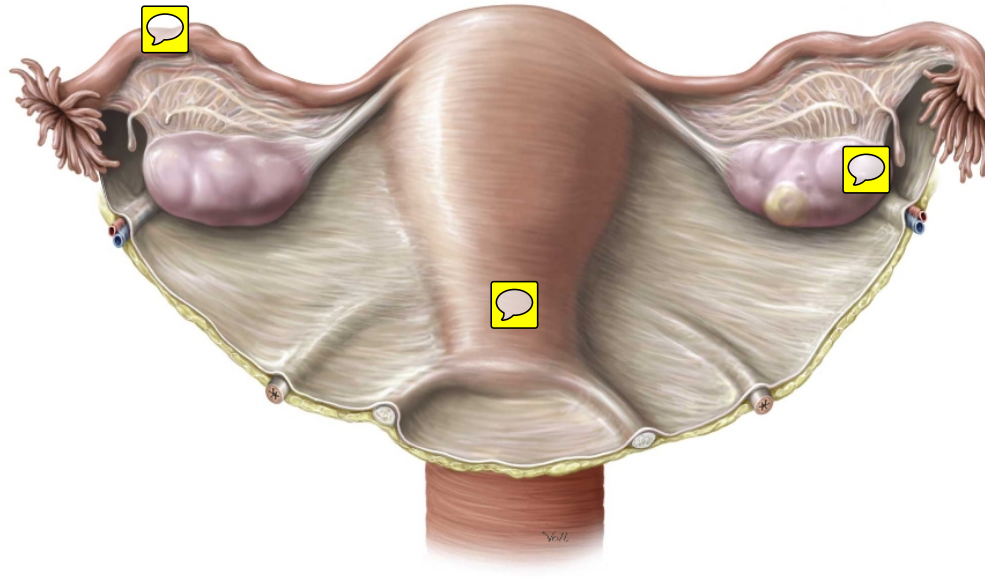


t ©2008-2010 by Thieme. All rights reserved.
r. Markus Voll



Uterus and uterine tube

Posterosuperior view.



18-2010 by Thieme. All rights reserved.
us Voll



Placenta Cast Block

