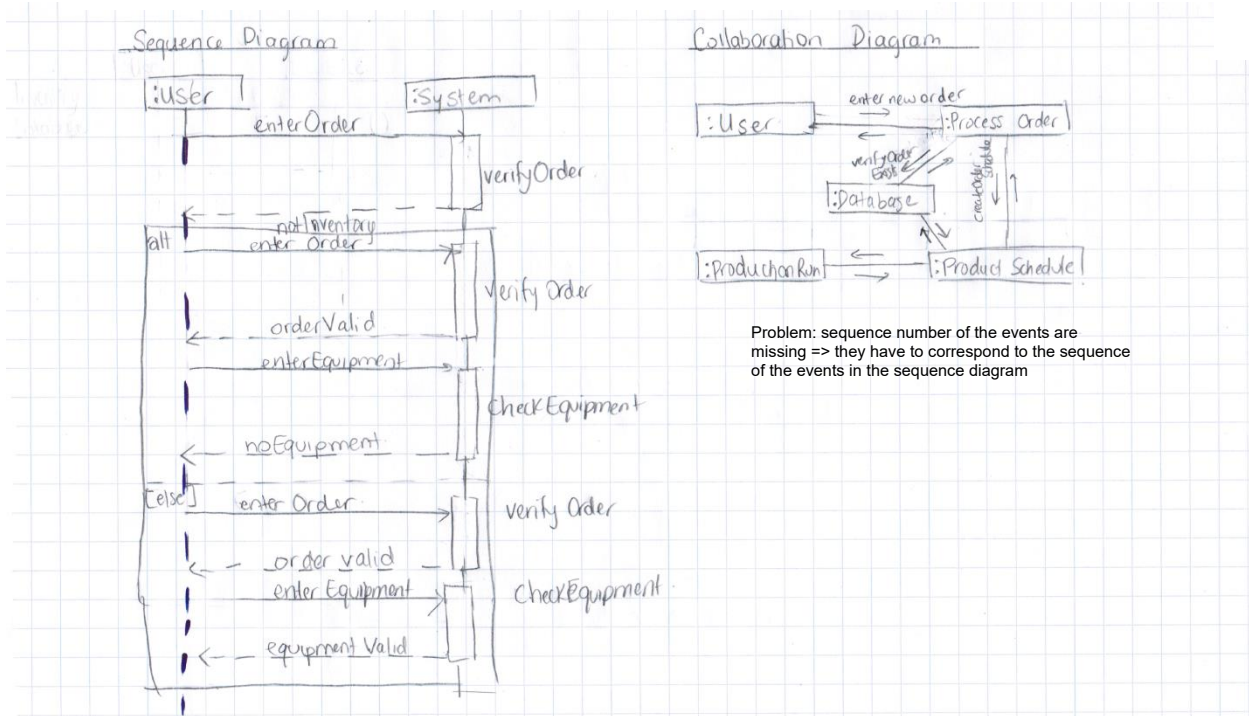
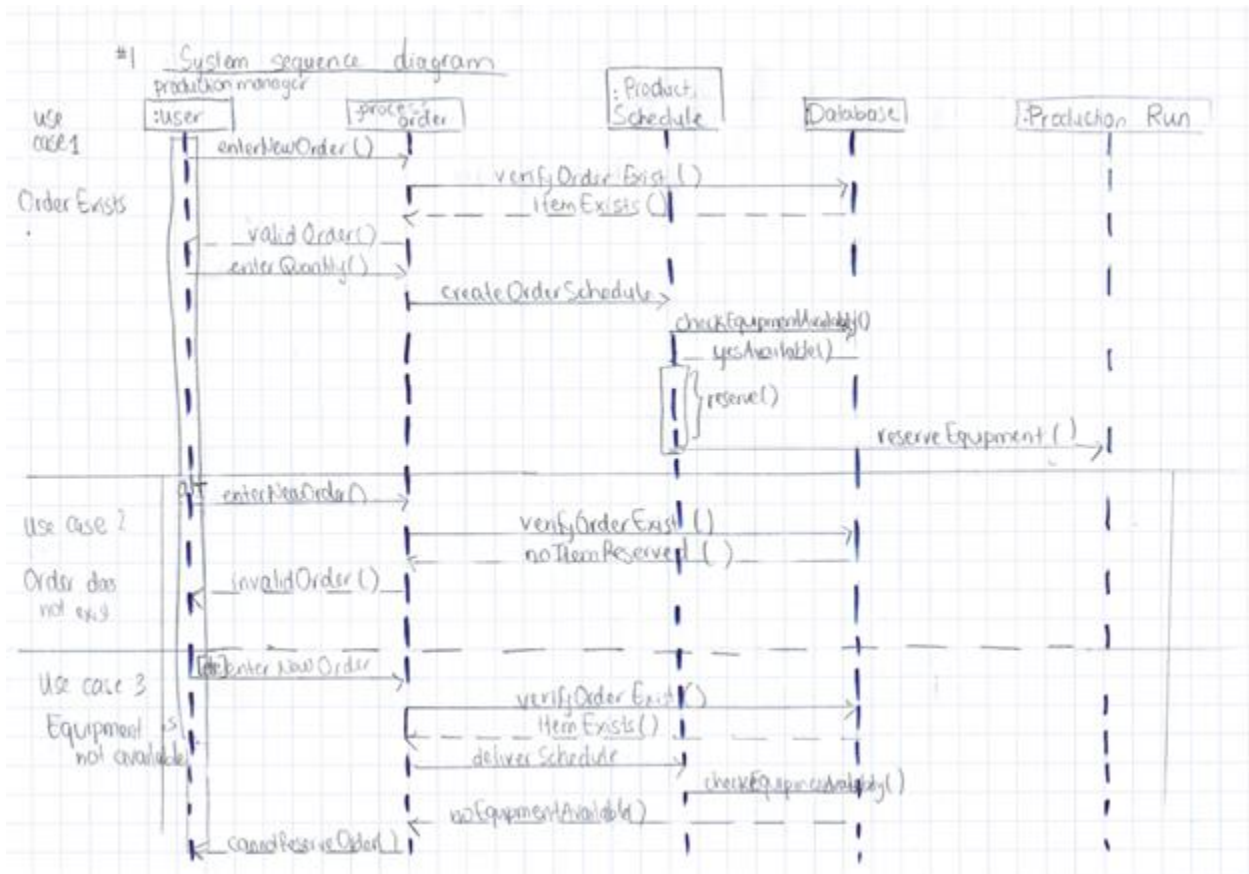


Jus  
=>



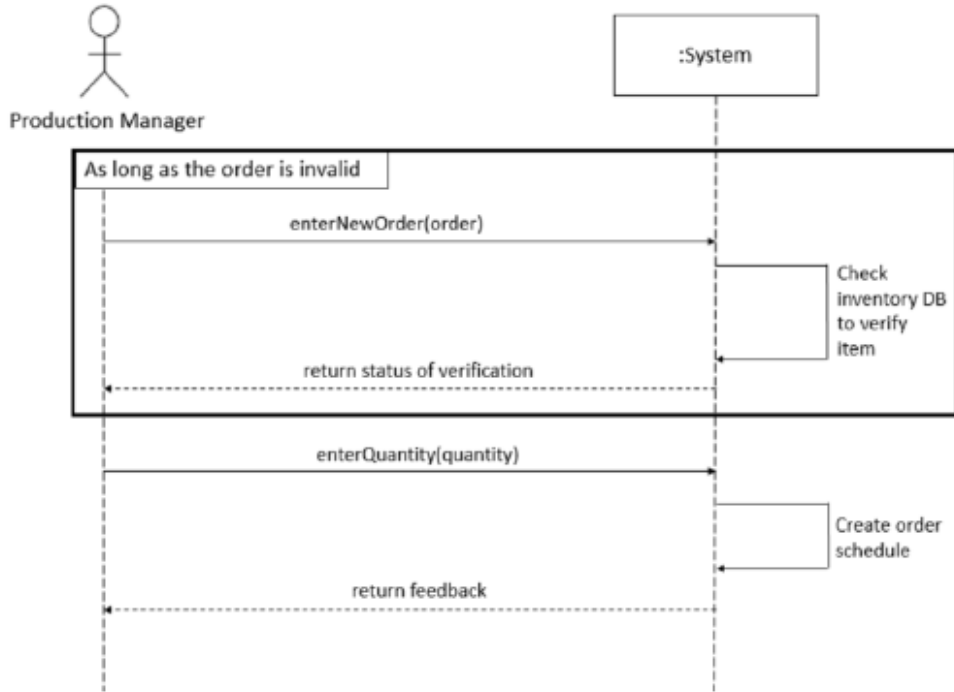
Problem here is: this is a system sequence diagram and **not** a sequence diagram, actor should be represented differently (stick person) and extern actors to the system should be included



This is a **Sequence diagram** and again actors should be represented differently

# Question #1

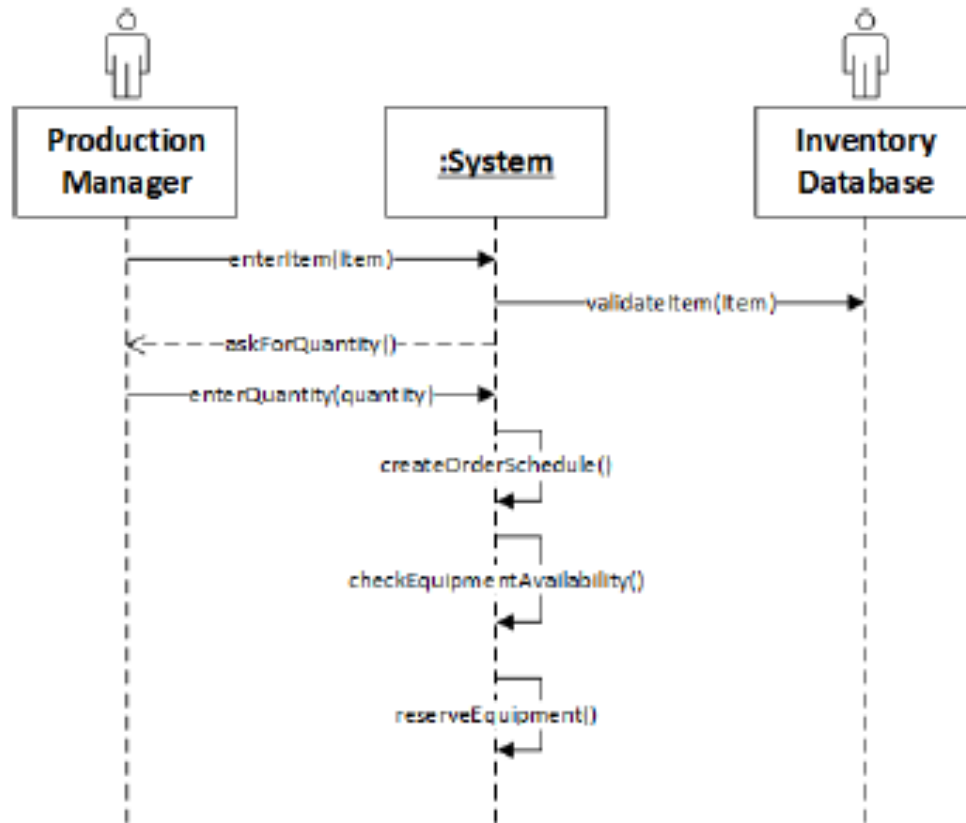
## System Sequence Diagram



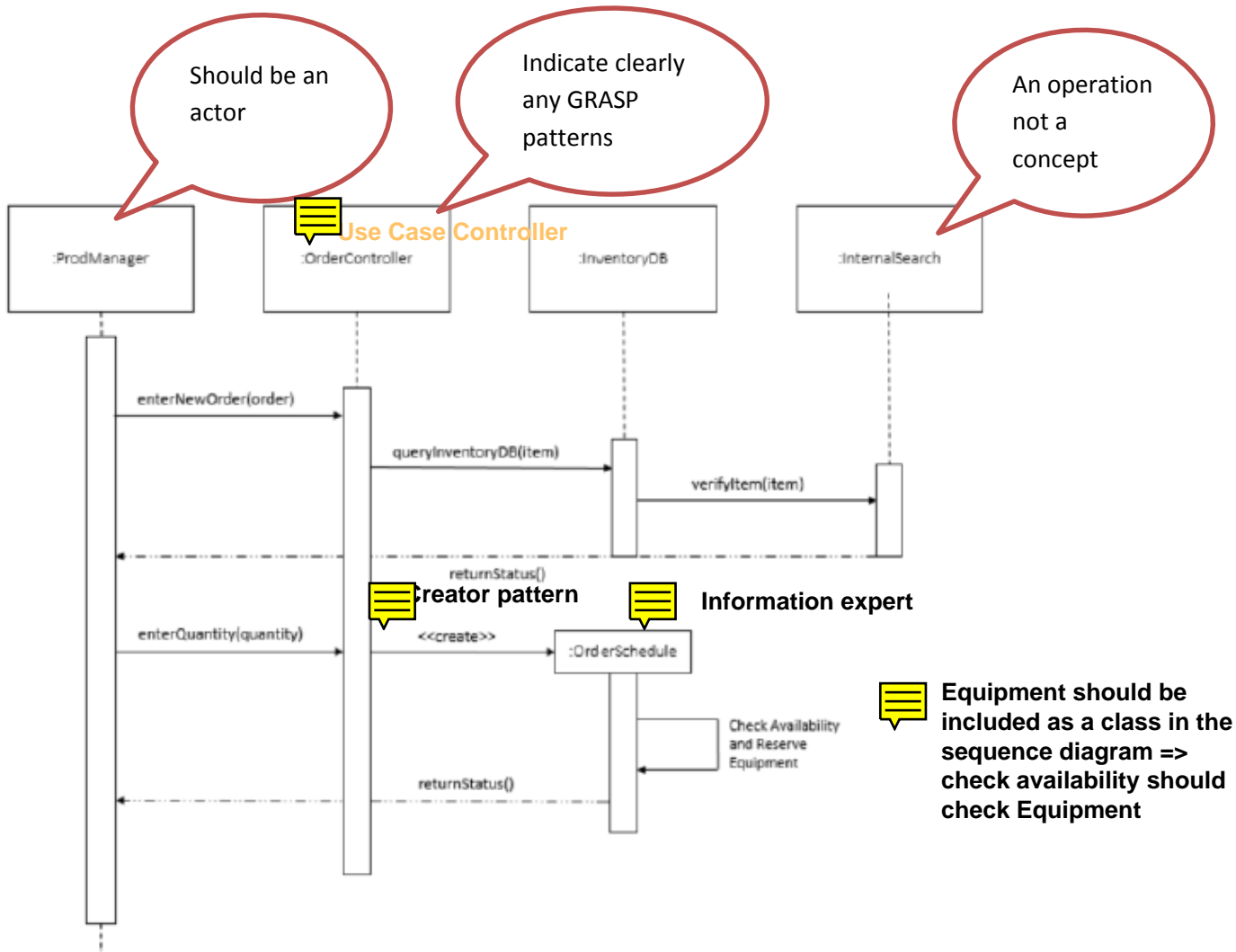
Okay

Better solution, since it acknowledges the external actor/system

1.1



Better, since it actually includes the external actor



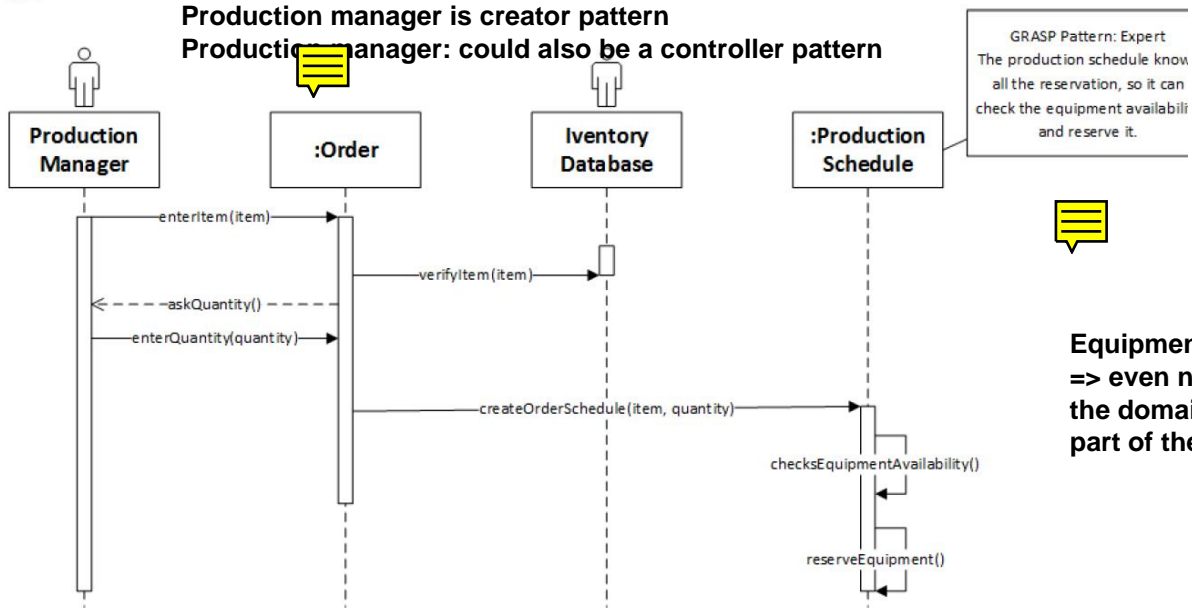
1.2

Order is dynamic, does not exist from the beginning.

=> : Order should be moved down on the Y axis

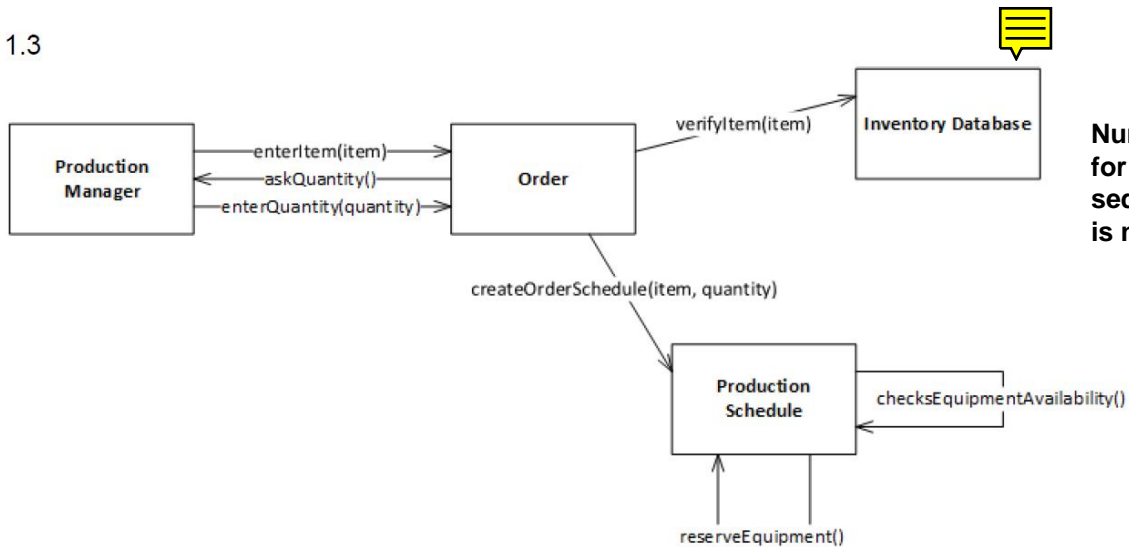
Production manager is creator pattern

Production manager: could also be a controller pattern



Equipment is missing  
=> even not being in the domain model - it is part of the scenario

1.3



Number is missing for the events => sequential numbering is needed.

Good solution. Always remember there are different solutions possible, depending on your interpretation of the requirements. In the exam I will ask you to highlight some of your decision, when drawing the UML diagrams.