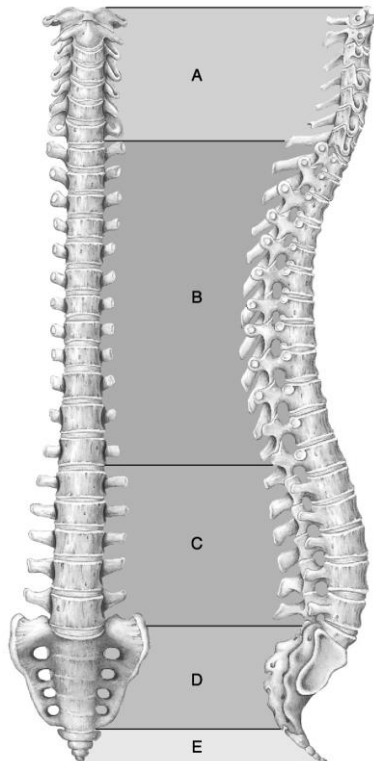


# ANP1106 Study Group #2

Week of Jan. 26<sup>th</sup>-30<sup>rd</sup>, 2015

Study Group Leaders: Sadad, Rizwan & Julie

## Matching Questions



**Figure 7.1**

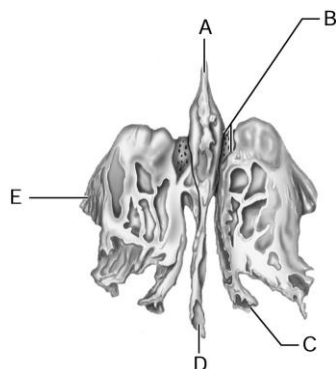
*Using Figure 7.1, match the following to the appropriate letter:*

- 1) Articulates with hip bones of the pelvis.
- 2) Attach to ribs.
- 3) Receive the most stress.
- 4) Transverse foramina present.
- 5) No canals or foramen present.
- 6) Includes the atlas and the axis.
- 7) Contains the joint that allows you to rotate your head "no."

# ANP1106 Study Group #2

Week of Jan. 26<sup>th</sup>-30<sup>rd</sup>, 2015

Study Group Leaders: Sadad, Rizwan & Julie



**Figure 7.2**

*Using Figure 7.2, match the following to the appropriate letter:*

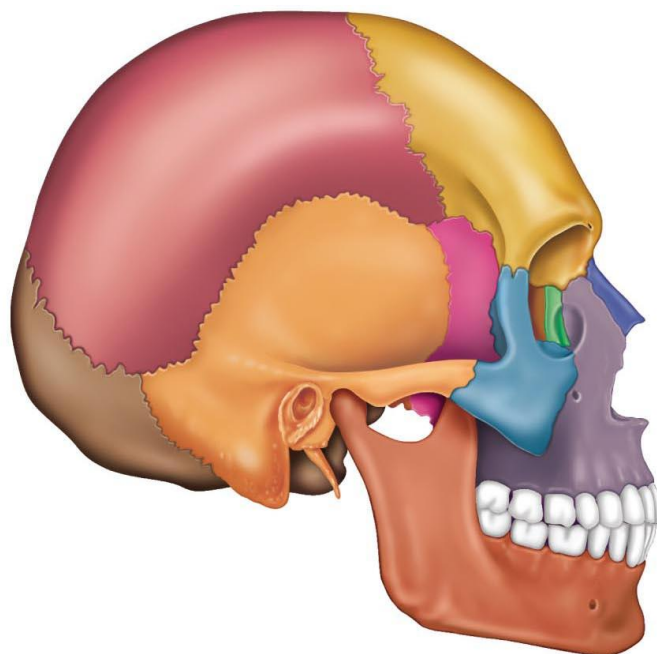
8) Nasal septum.

10) Orbital area.

11) Olfactory bulb sits on this.

12) Nasal concha.

**Label as many components of the following diagram as you can:**

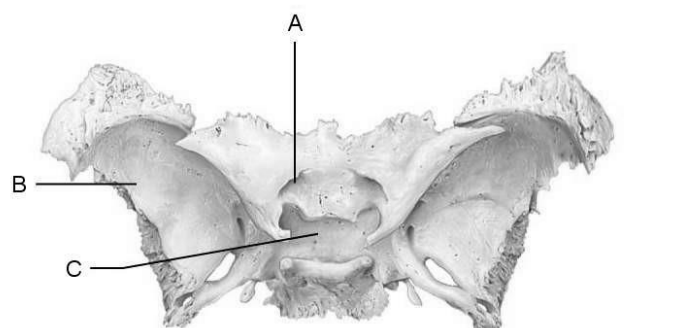


**(a)**

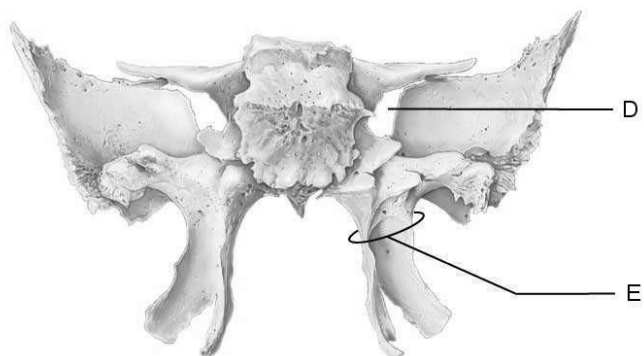
# ANP1106 Study Group #2

Week of Jan. 26<sup>th</sup>-30<sup>rd</sup>, 2015

Study Group Leaders: Sadad, Rizwan & Julie



(a) Superior view



(b) Posterior view

## Figure 7.3

Using Figure 7.3, match the following to the appropriate letter:

- 14) Anchor the pterygoid muscles.
- 15) Passageway for optic nerve.
- 16) Encloses hypophysis.
- 17) Forms parts of the middle cranial fossa, dorsal walls of the orbits, and external walls of the skull.
- 18) Allow cranial nerves that control eye movements to enter the orbit.

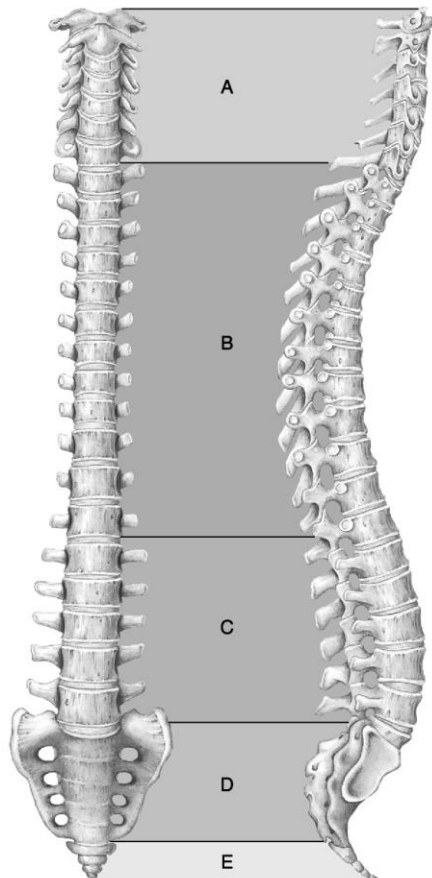
# ANP1106 Study Group #2

Week of Jan. 26<sup>th</sup>-30<sup>rd</sup>, 2015

Study Group Leaders: Sadad, Rizwan & Julie

## ANSWERS

### Matching Questions



**Figure 7.1**

*Using Figure 7.1, match the following:*

1) Articulates with hip bones of the pelvis.

Answer: D

Diff: 1      Page Ref: 220; Fig. 7.16

2) Attach to ribs.

Answer: B

Diff: 1      Page Ref: 220; Fig. 7.16

3) Receive the most stress.

Answer: C

Diff: 1      Page Ref: 220; Fig. 7.16

4) Transverse foramina present.

Answer: A

Diff: 1      Page Ref: 220; Fig. 7.16

# ANP1106 Study Group #2

Week of Jan. 26<sup>th</sup>-30<sup>rd</sup>, 2015

Study Group Leaders: Sadad, Rizwan & Julie

5) No canals or foramen present.

Answer: E

Diff: 1 Page Ref: 223; Fig. 7.16

6) Includes the atlas and the axis.

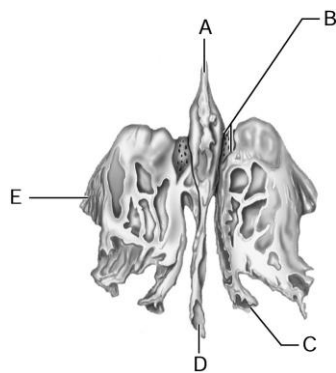
Answer: A

Diff: 1 Page Ref: 219; Fig. 7.16

7) Contains the joint that allows you to rotate your head "no."

Answer: A

Diff: 1 Page Ref: 219; Fig. 7.16



**Figure 7.2**

*Using Figure 7.2, match the following:*

8) Nasal septum.

Answer: D

Diff: 2 Page Ref: 209; Fig. 7.10

9) Turbinate bone.

Answer: C

Diff: 2 Page Ref: 209; Fig. 7.10

10) Orbital area.

Answer: E

Diff: 2 Page Ref: 209; Fig. 7.10

11) Olfactory bulb sits on this.

Answer: B

Diff: 2 Page Ref: 208; Fig. 7.10

# ANP1106 Study Group #2

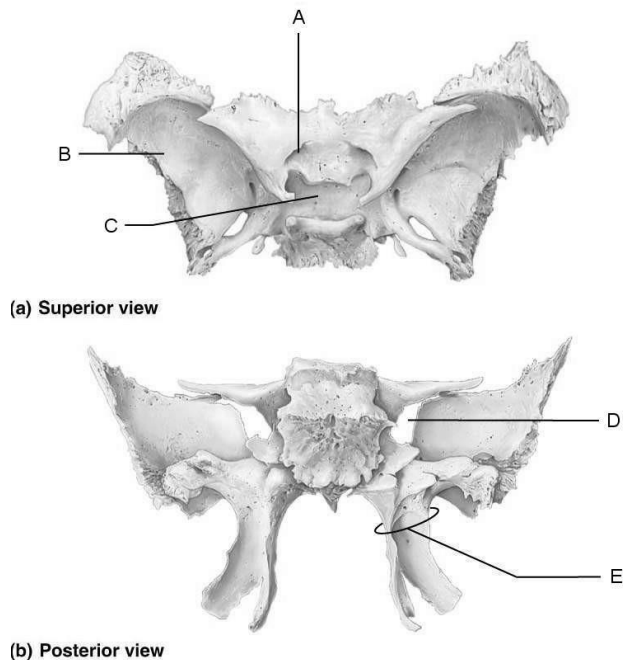
Week of Jan. 26<sup>th</sup>-30<sup>rd</sup>, 2015

Study Group Leaders: Sadad, Rizwan & Julie

12) Nasal concha.

Answer: C

Diff: 2      Page Ref: 209; Fig. 7.10



**Figure 7.3**

*Using Figure 7.3, match the following:*

14) Anchor the pterygoid muscles.

Answer: E

Diff: 2      Page Ref: 207; Fig. 7.9

15) Passageway for optic nerve.

Answer: A

Diff: 2      Page Ref: 208; Fig. 7.9

16) Encloses hypophysis.

Answer: C

Diff: 2      Page Ref: 207; Fig. 7.9

17) Forms parts of the middle cranial fossa, dorsal walls of the orbits, and external walls of the skull.

Answer: B

Diff: 2      Page Ref: 207; Fig. 7.9

# ANP1106 Study Group #2

Week of Jan. 26<sup>th</sup>-30<sup>rd</sup>, 2015

Study Group Leaders: Sadad, Rizwan & Julie

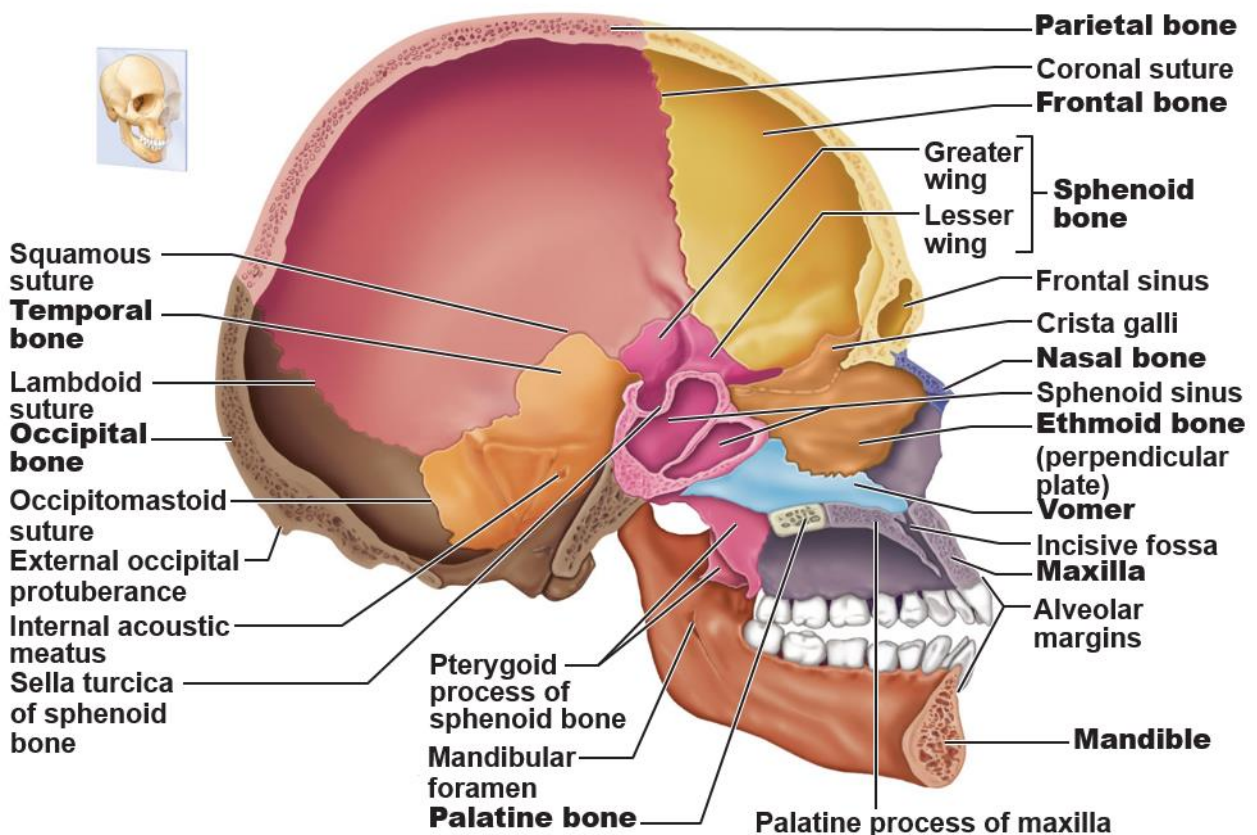
18) Allow cranial nerves that control eye movements to enter the orbit.

Answer: D

Diff: 2 Page Ref: 208; Fig. 7.9

## Skull Labeling

**\*\*\*NOTE\*\*\* : you are not responsible for every single component labeled below, focus on those in bold, and those mentioned by your professor in their slides!**



**(b) Midsagittal section showing the internal anatomy of the left half of skull**