

Final Exam

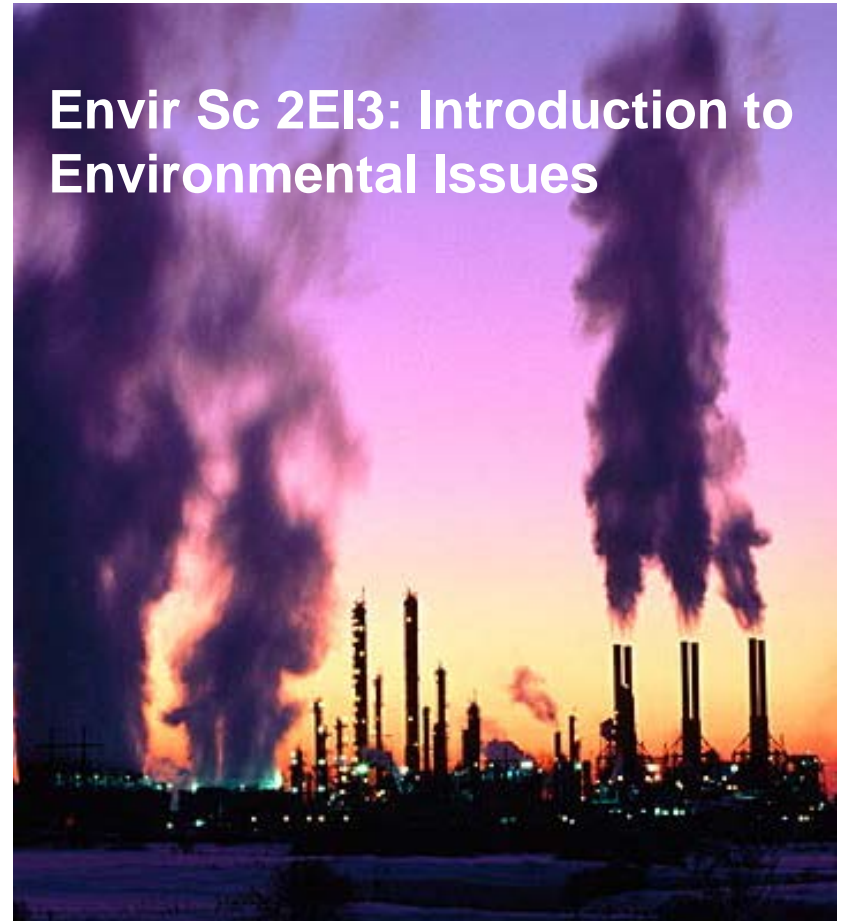
Upper Year Courses in Environmental Sciences

- Level 2

Envir Sc 2B03:
Soils and the
Environment



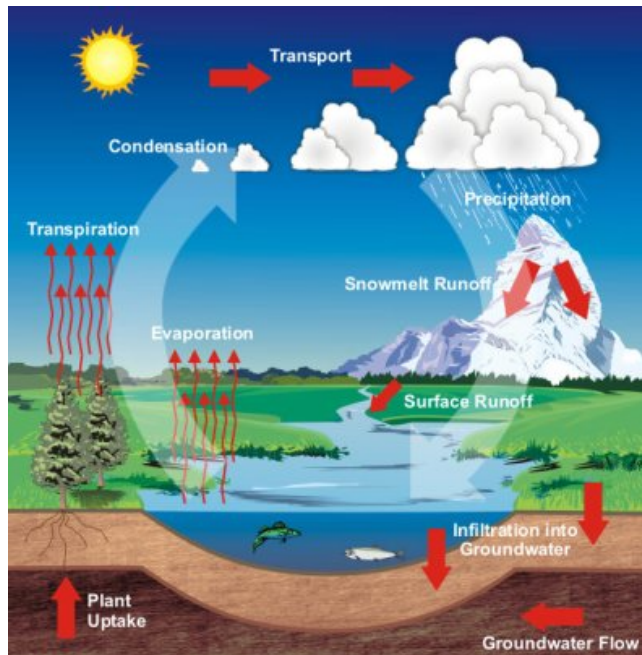
**Envir Sc 2E13: Introduction to
Environmental Issues**



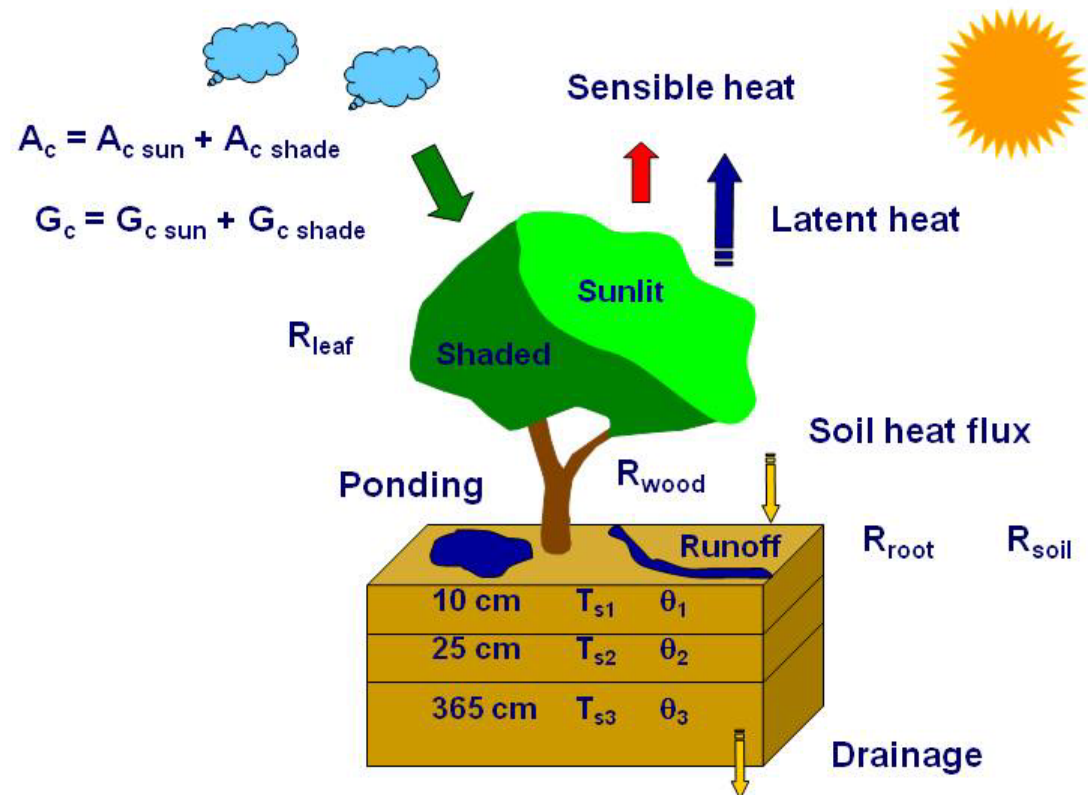
Upper Year Courses in Environmental and Earth Sciences

- Level 2

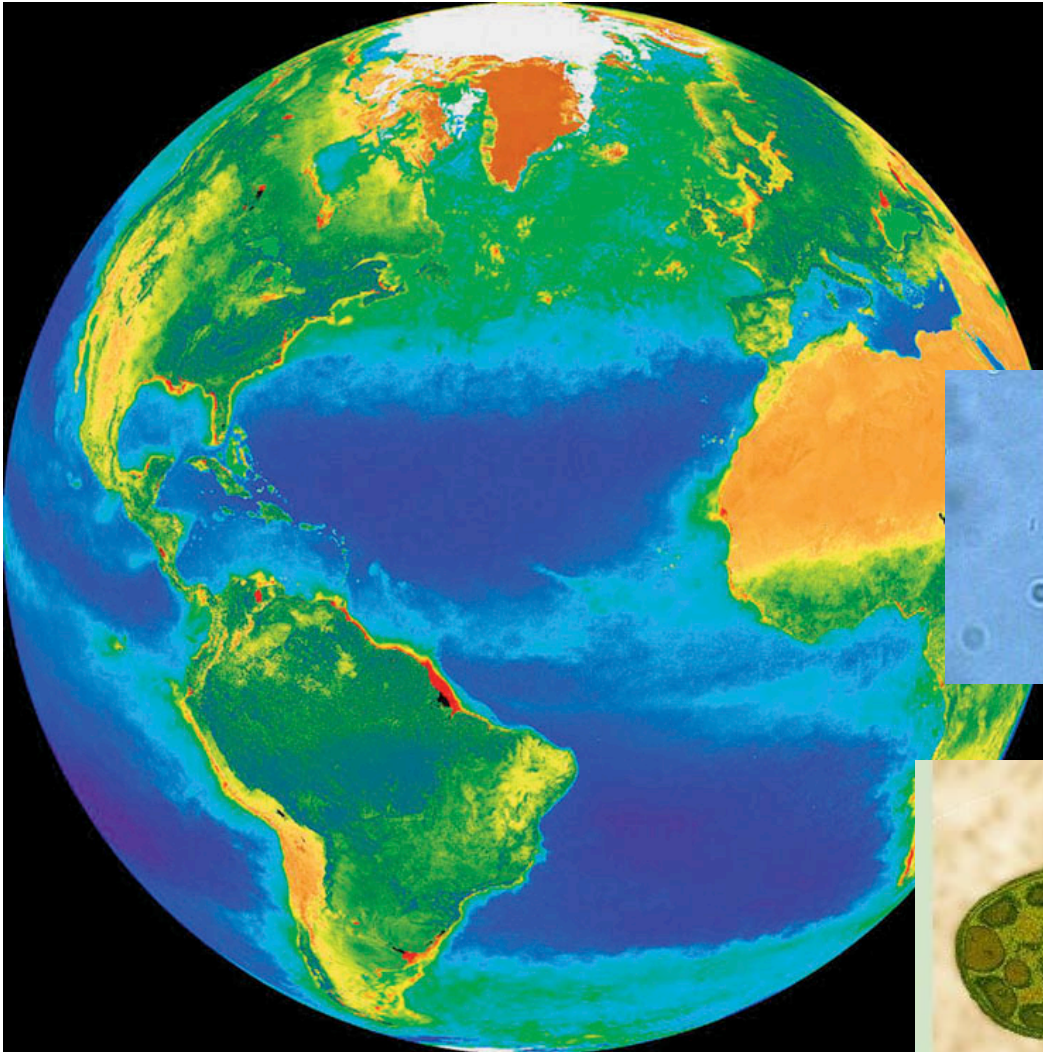
Envir Sc 2W03:
Physical
Hydrology



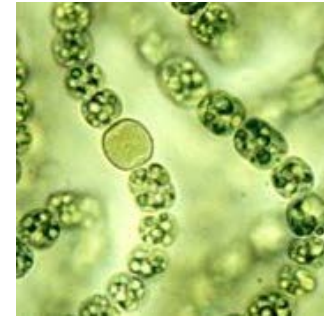
Envir Sc 2C03: Surface Climate Processes



Upper Year Courses in Environmental Sciences



- Level 2
Life Sci 2H03:
Environmental Life
Sciences



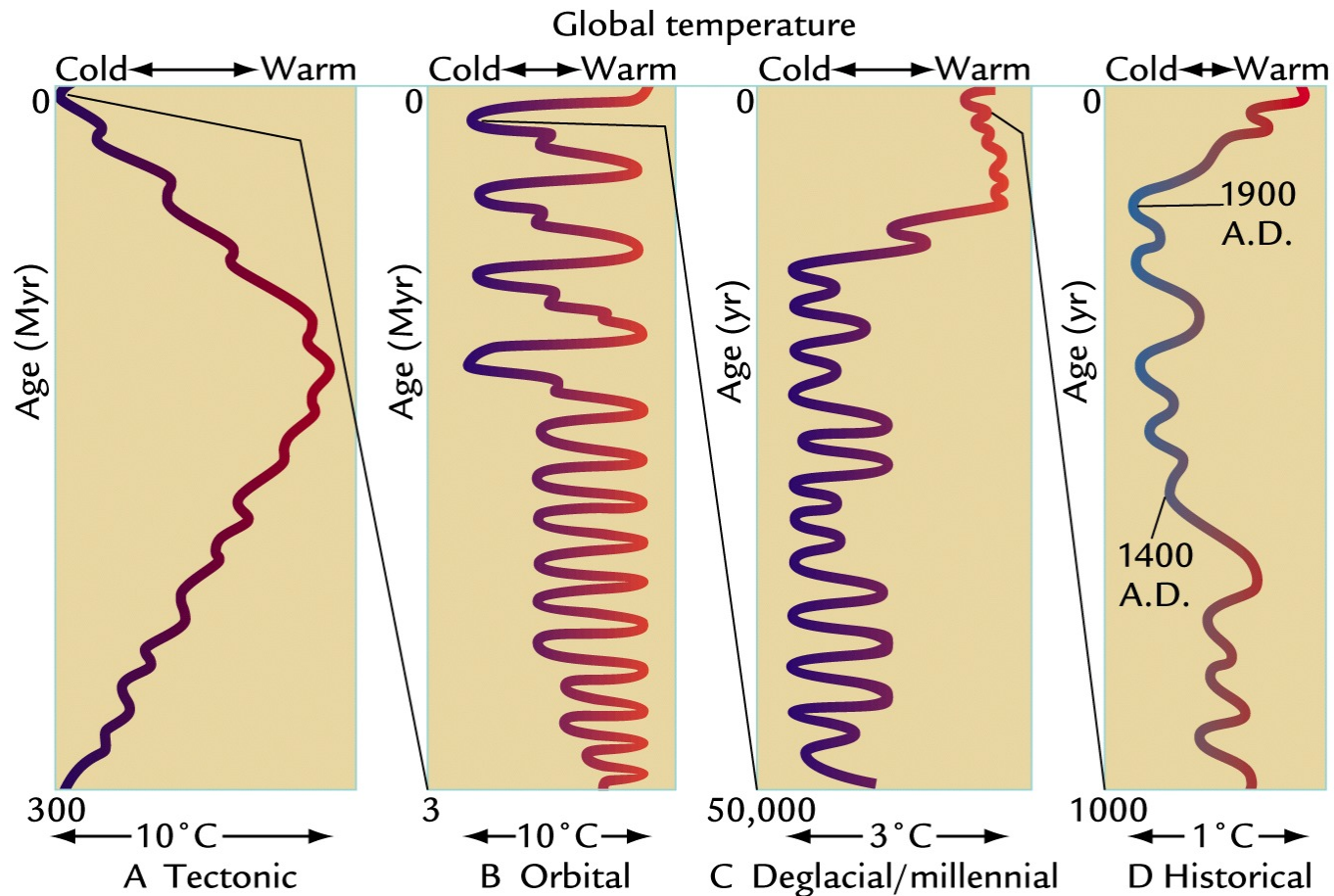
Upper Year Courses in Environmental Sciences

- Level 3: **Envir Sc 3B03** Ecosystems and Climate Change



Upper Year Courses in Environmental and Earth Sciences

- **Level 3 Envir Sc 3CC3: Earth's Changing Climate**



Upper Year Courses in Environmental Sciences

- Level 3: **Envir Sc 3EE3** Energy and Society



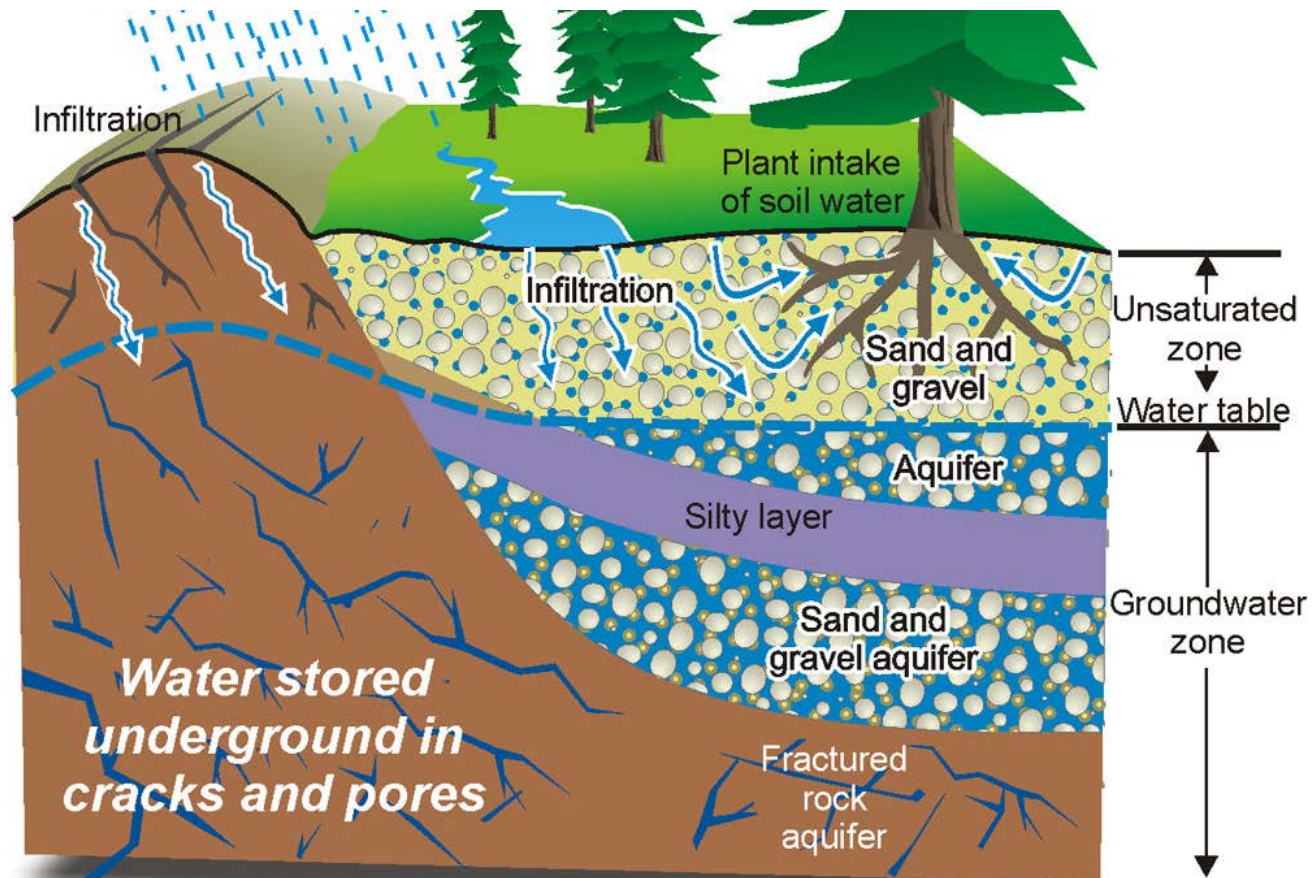
Upper Year Courses in Environmental Sciences

- Level 3: **Envir Sc 3N03 Cold Environments**



Upper Year Courses in Environmental Sciences

- Level 3: **Envir Sc 3W03: Physical Hydrogeology**



Upper Year Courses in Environmental Sciences

- Envir Sc 4BB3: Field Ecohydrology
- Envir Sc 4C03: Advanced Physical Climatology
- Envir Sc 4CC3: Environmental Reconstruction Using Stable Isotopes
- Envir Sc 4N03: Global Biogeochemical Cycles
- Envir Sc 4W03: Hydrologic Modelling

Envir Sc 1A03 - Return of Course Materials

- Last days to pick up all assignments: Lab 6, and any lab report not picked up before:
 - **Monday, April 21st from 1-2pm in BSB 324**
 - **Tuesday, April 22nd from 1-2pm in BSB 324**
 - **Friday, April 25th from 1-2pm in BSB 324.**
- **You must bring your student card, know your lab section number and TA name.**
- **You cannot pick up an assignment for a friend.**
- **Everything will be shredded afterwards.**

Deadlines

- To have issues with marks on A2L addressed, apart from Lab 6:
 - Friday, April 11th, 4:30 p.m.
- For Lab 6 issues:
 - Friday, April 25th, 4:30 p.m.

OFFICE HOURS

Monday, April 28

2:30 to 4:30 p.m.

GSB-202

FINAL EXAM

Tuesday, April 29

2:00 – 5:00 pm

BRING: Student Card
Calculator (Casio FX-991)
Colour Pencils!
Few belongings

FINAL EXAM - Location

Room/Location	Alpha Split
IWC 1 (1)	ABDE - BITI
IWC 1 (2)	BLAI - DENG
IWC 1 (3)	D'GU - GARD
IWC 1 (4)	GARG - HUFF
IWC 1 (5)	HUI - KRUC
IWC 1 (6)	KUZI - MACD
IWC 2 (7)	MACK - MORR
IWC 2 (8)	MOST - PATE
IWC 2 (9)	PATE - REZA
IWC 2 (10)	RISH - SCUL
IWC 3 (11)	SEEG - TAM
IWC 3 (12)	TAN - VIS
IWC 3 (13)	VIVE - YANG
IWC 3 (14)	YANG - ZIZE

Special Instructions

(that will be on front page of Final Exam)

1. SPECIAL INSTRUCTIONS: The only calculator permitted is the CASIO FX-991.
2. For all Parts, answer all questions in the space provided on the examination paper.
3. You may use diagrams to supplement your answers
4. Make sure to write your answers in a legible manner.
Answers that are completely illegible will be given a mark of zero.
5. Point form may be used
6. This test contains 16 pages.

Special Instructions (2)

7. Aides of ANY type (lecture notes, textbook, etc.) are NOT allowed. Students found with unauthorized electronic devices (cell phones, etc.) during the exam will automatically receive a 15% penalty on their final exam mark, regardless of circumstances.

Final Exam

- Definitions; I will supply the definition, you supply the term
- 10 out of 12 definitions; each worth 1 mark: taken from entire course
- 6 short answer questions (5 to 12 marks each)
- 5 questions from end of lecture (2 marks each)
- Lab 4 - Water Balance (15 marks)
- Will be marked out of 74 and is worth 40% of final mark
- **THE ONLY CALCULATOR PERMITTED WILL BE THE CASIO FX-991**

Material covered by Short Answer Questions

- Material covered in lectures:
 - Global Climate, Climates of the World
 - Climate Variability and Feedbacks
- Labs 1, 2, 3, 5: BRING COLOUR PENCILS

Exam Preparation – Hints!

- Review lecture notes carefully!
- Should know definitions, key diagrams, examples
- Review appropriate lab assignments – diagrams, check corrections made
- **THINK while reviewing!**

Exam Writing Hints!

- **Look at how marks are allocated for each question** – will guide amount of time spent on each question
- **Organize your time**
 - take 5 – 10 minutes to read paper and ‘settle in’
 - work out how much time you need for each part
 - don’t go over time on any one part
 - if any extra time, read and check through answers
- Make sure you are **answering the question**, not just writing down everything you know on the topic
 - e.g.: if asked to draw a diagram, draw a diagram - Do not write a description
- **Don’t panic** – there’s always something you can do!

Good Luck!