

Take Test: Online Quiz #3_2014

Multiple Attempts Not allowed. This test can only be taken once.

Force Completion This test can be saved and resumed later.

Save All Answers

Close Window

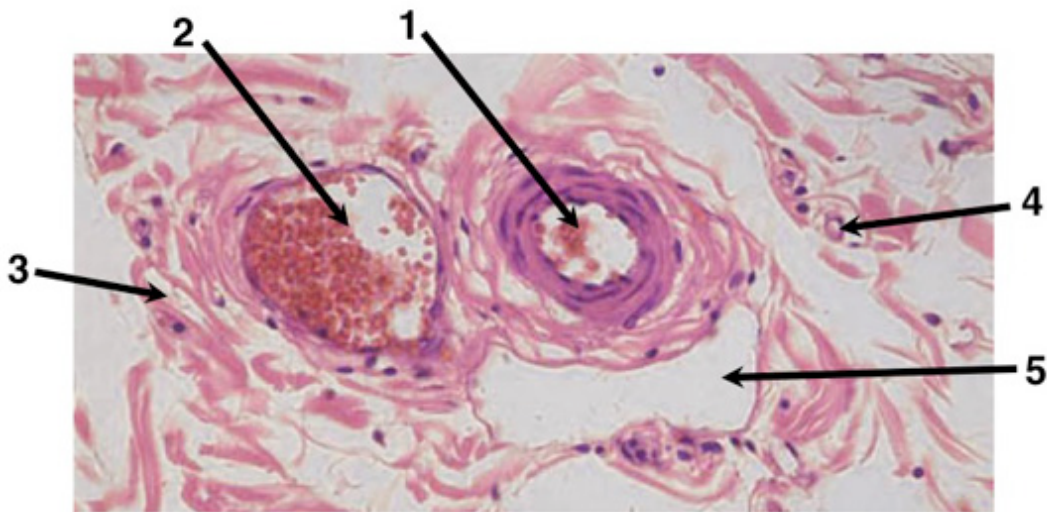
Save and Submit

1 points

Saved

Question 1

In the figure below, which of the following structures represents the lumen of an arteriole:



- 1
- 2
- 3
- 4
- 5

1 points

Saved

Question 2

When comparing arteries, veins, and lymphatic vessels, which of the following is CORRECT:

- only veins have valves
- only lymphatics begin as blind-ended vessels
- only veins have a tunica media
- only arteries have a tunica adventitia
- only arteries transport highly oxygenated blood

Question 3

1 points

Saved

Which of the following is the LEAST significant component of a valve located within the lumen of a medium-sized vein:

- smooth muscle
- tunica intima
- endothelium
- basement membrane
- collagen fibers

Question 4

1 points

Saved

In the heart, coronary arteries are part of the:

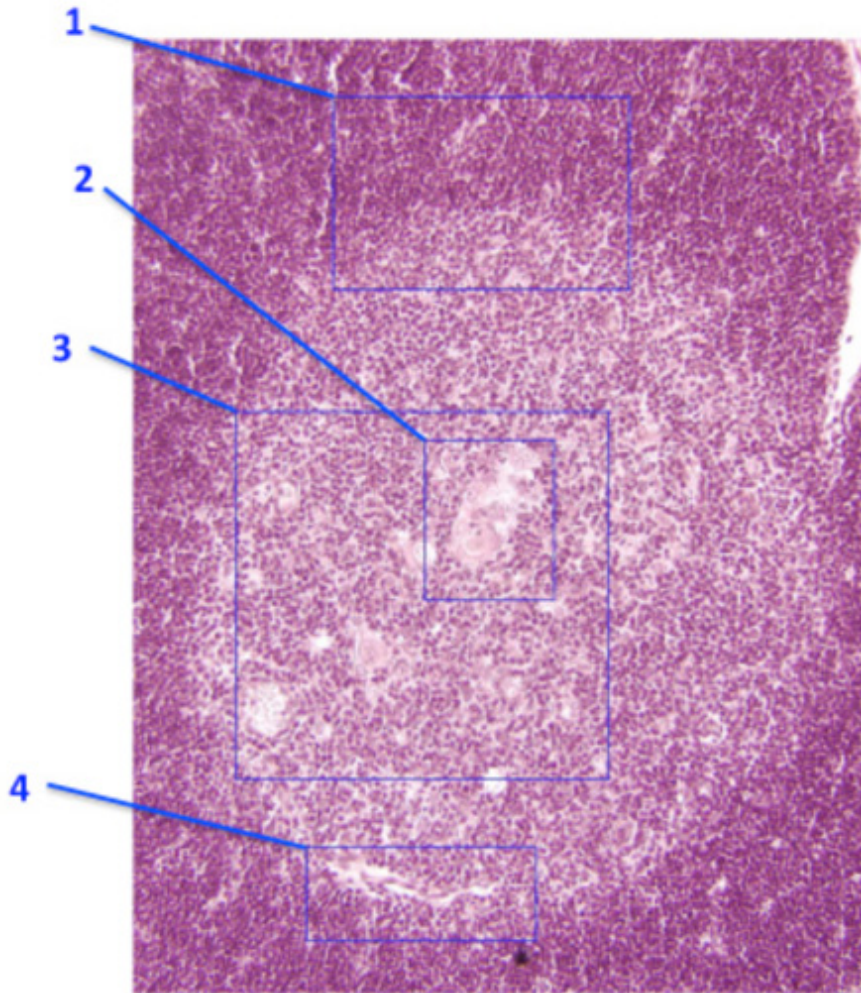
- vasa vasora
- post-capillary venule network
- myocardium
- coronary valves
- sub-endocardial connective tissue

Question 5

1 points

Saved

In the figure below, which is a light micrograph of an H&E-stained section of a thymic lobule, which of the following is most prominent in box #2:



- Hassall's corpuscle
- capillaries of the blood-thymus barrier
- developing B-lymphocytes
- germinal center
- developing T-lymphocytes

Question 6

1 points

Saved

Regarding T and B lymphocytes, which of the following is CORRECT:

- both interact with specific antigens
- stem cells for both are located in the thymus
- both undergo self antigen-mediated clonal deletion in the bone marrow
- both secrete antibodies
- only one contributes to the adaptive immune response

Question 7

1 points

Saved

Which of the following is in the 'flow of lymph':

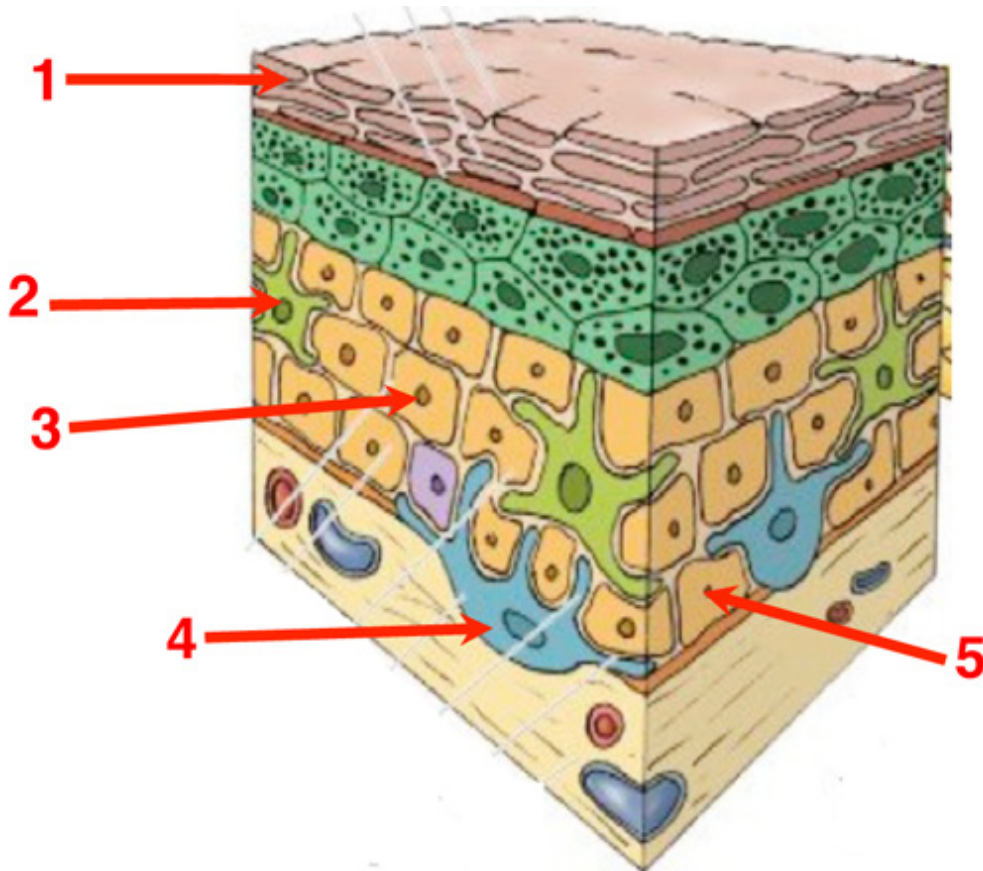
- white pulp in the spleen
- red pulp in the spleen
- pharyngeal tonsil
- inguinal lymph node
- M.A.L.T. in the appendix

1 points

Saved

Question 8

In the figure below, which is a schematic of the epidermis of the skin, which cell has the greatest number of desmosomes.



- 1
- 2
- 3
- 4
- 5

1 points

Saved

Question 9

In a hair follicle, the external root sheath is most similar to the:

- stratum granulosum
- basement membrane
- stratum lucidum
- stratum basale
- stratum spinosum

1 points

Saved

Question 10

Which of the following hormones binds to intracellular receptors that can then translocate to the nucleus and alter gene transcription:

- adrenaline
- AVP (ADH)
- cortisol
- FSH
- CRH

1 points

Saved

Question 11

In the skin, which of the following contain melanin:

- keratinocytes of the stratum basale
- keratinocytes of the stratum spinosum
- epidermal merkel cells
- dermal fibroblasts
- hypodermal adipocytes

1 points

Saved

Question 12

Which of the following is a structure where a stratified cuboidal epithelium is prominent:

- arteriole in a dermal papilla
- secretory portion of a sebaceous gland
- epidermis of thin skin
- venule in a dermal papilla
- duct of an eccrine sweat gland

1 points

Saved

Question 13

Where is CRH released by the cells that synthesize it:

- the hypothalamus
- the median eminence
- the third ventricle
- the anterior pituitary
- the posterior pituitary

1 points

Saved

Question 14

Where is oxytocin synthesized:

- chromophobes in the anterior pituitary
- chromophils in the anterior pituitary
- neuronal cell bodies in the posterior pituitary
- neuronal cell bodies in the hypothalamus
- Herring bodies in the posterior pituitary

1 points

Saved

Question 15

In the pituitary, which of the following is derived from neural ectoderm:

- lactotropes
- folliculostellate cells
- chromophilic cells
- thyrotropes
- pituicytes

1 points

Saved

Question 16

In the thyroid, where is triiodothyronine (T3) released:

- at the basal surface of thyroid follicular cells
- at the apical surface of thyroid follicular cells
- into the colloid of the thyroid follicle
- all of the above
- none of the above

1 points

Saved

Question 17

Parafollicular cells in the thyroid secrete a hormone that:

- lowers blood calcium levels
- decreases calcium absorption by intestinal epithelial cells
- antagonizes the action of parathyroid hormone.
- all of the above
- none of the above

1 points

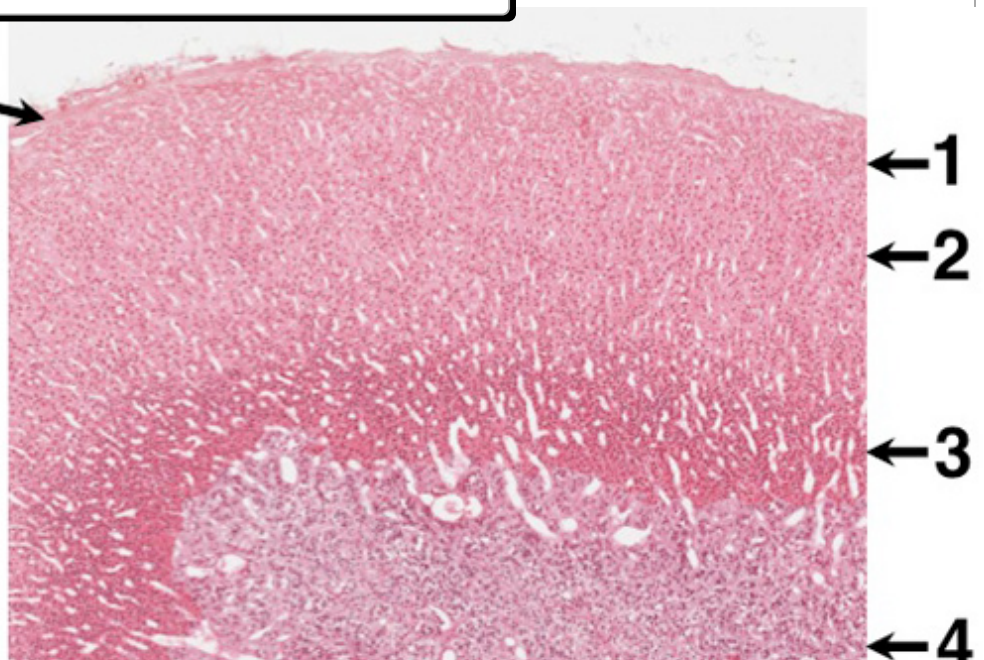
Saved

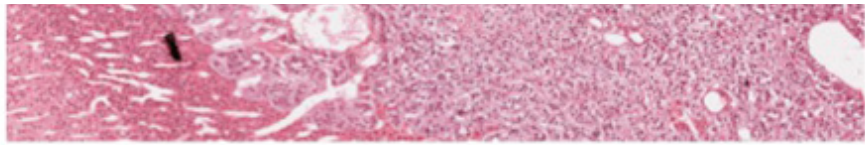
Question 18

The image below is a low power H&E-stained light micrograph of the adrenal gland. Which numbered structure is stimulated by pre-ganglionic sympathetic nerves to secrete its endocrine products:

Question Completion Status:

Capsule





- 1
- 2
- 3
- 4

1 points

Saved

Question 19

In the mucosal epithelium on the floor of the nasal cavity, which of the following form adhesion complexes with the basement membrane:

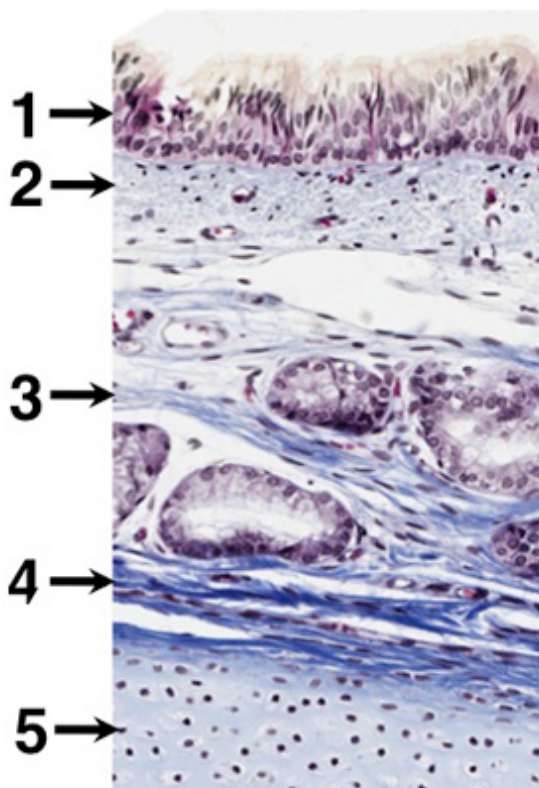
- goblet cells
- basal cells
- ciliated cells
- all of the above
- none of the above

1 points

Saved

Question 20

The image below is a light micrograph of a section of the trachea stained with Masson's trichrome. Which numbered structure represents the perichondrium:



- 1
- 2
- 3
- 4
- 5

Save and Submit

Click Save and Submit to save and submit. Click Save All Answers to save all answers. Click Close Window to close window.

Save All Answers

Close Window

Save and Submit