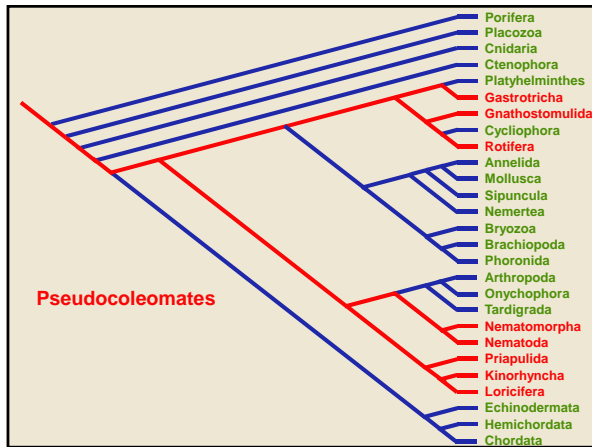


Nematoda

Phylum Nematoda
A representative pseudocoelomate

BIO2135 Animal Form & Function 1
Université d'Ottawa / University of Ottawa 7:58 PM

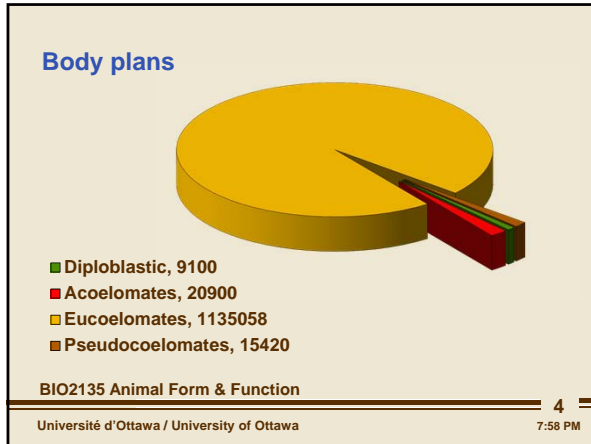


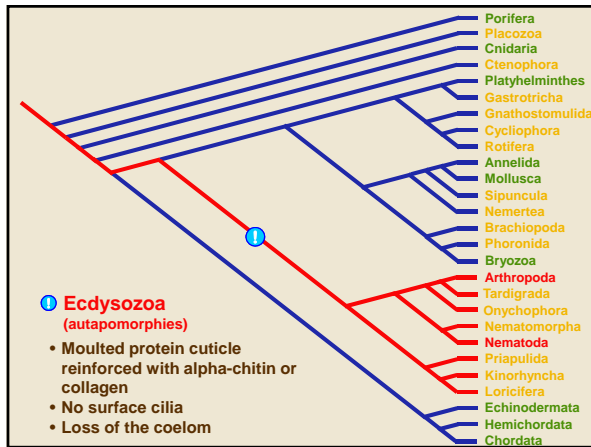
Cavities in mesoderm

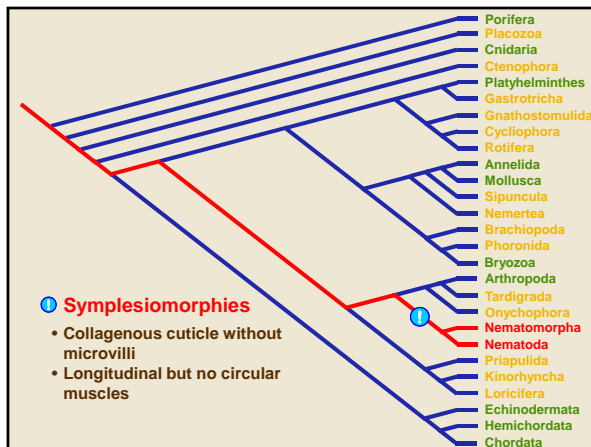
- Acoelomate
- Pseudocoelomate
- Eucelomate

BIO2135 Animal Form & Function 3
Université d'Ottawa / University of Ottawa 7:58 PM

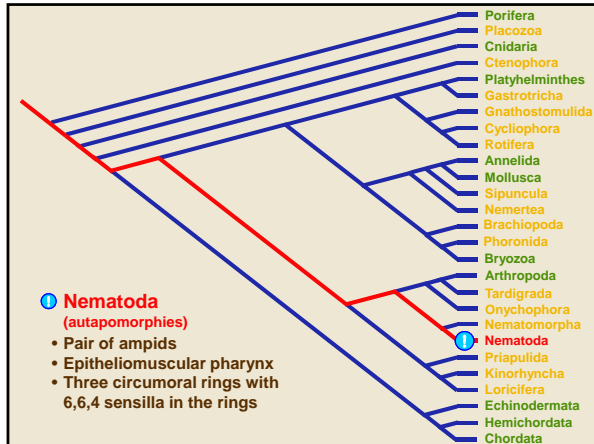
Nematoda

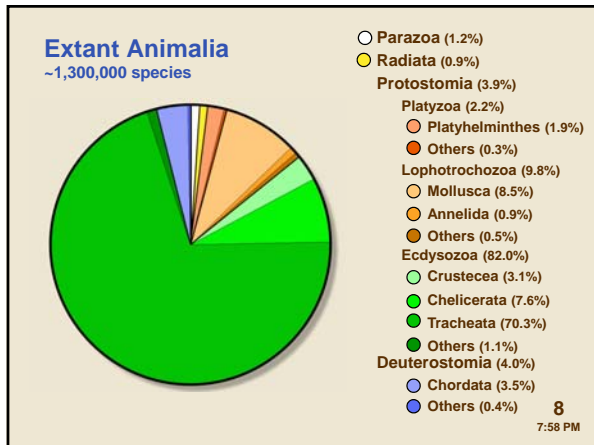


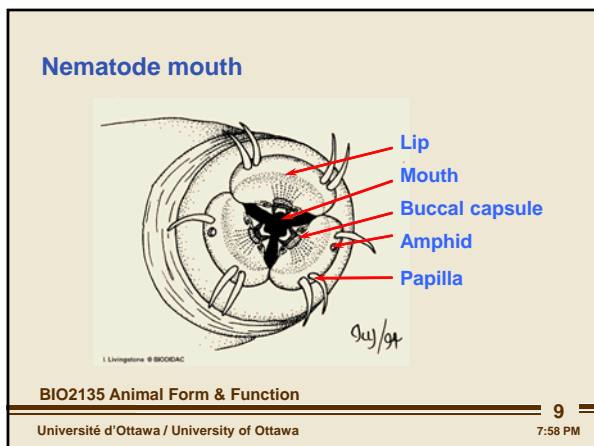




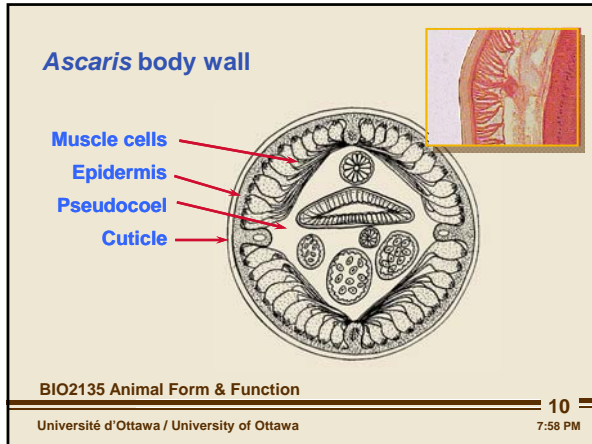
Nematoda

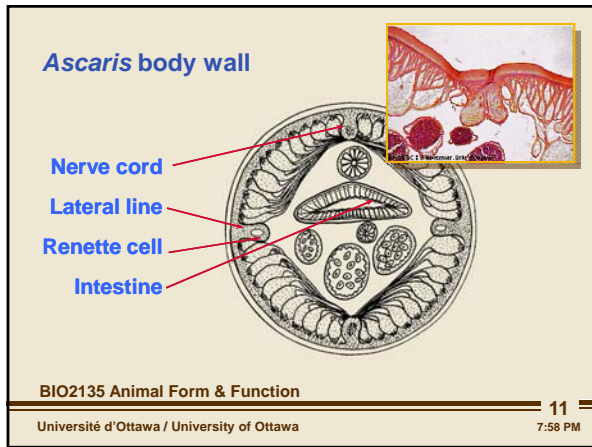


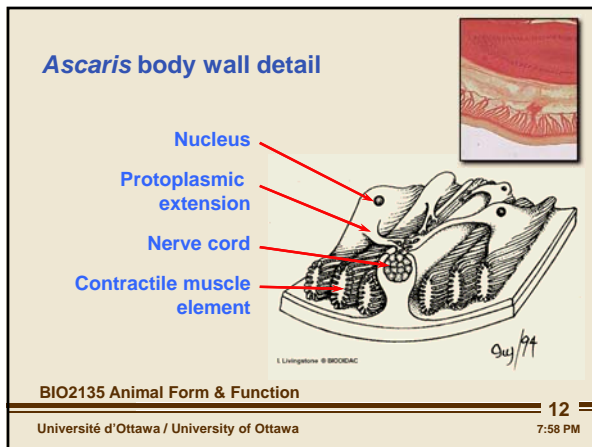




Nematoda

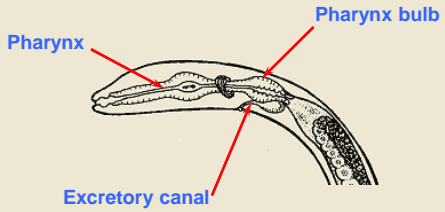






Nematoda

Epitheliomuscular pharynx



Pharynx

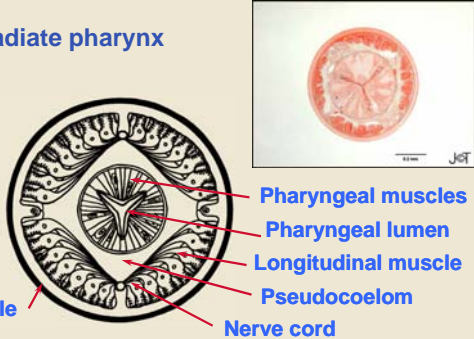
Pharynx bulb

Excretory canal

BIO2135 Animal Form & Function 13

Université d'Ottawa / University of Ottawa 7:58 PM

Triradiate pharynx



Pharyngeal muscles


Pharyngeal lumen

Longitudinal muscle

Pseudocoelom

Nerve cord

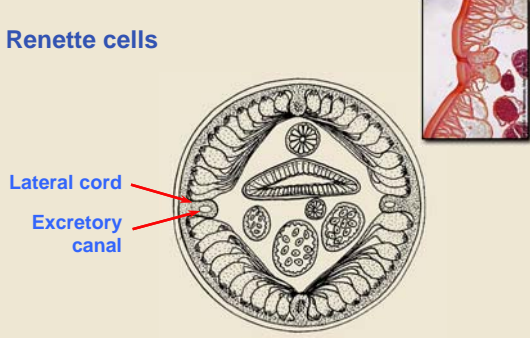
Cuticle



BIO2135 Animal Form & Function 14


Université d'Ottawa / University of Ottawa 7:58 PM

Renette cells



Lateral cord

Excretory canal



BIO2135 Animal Form & Function 15

Université d'Ottawa / University of Ottawa 7:58 PM

Nematoda

