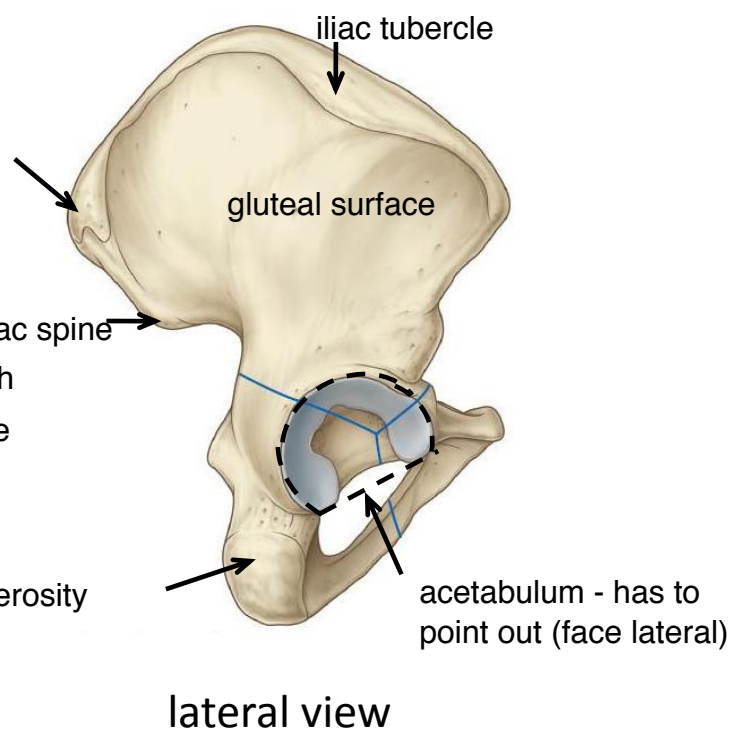
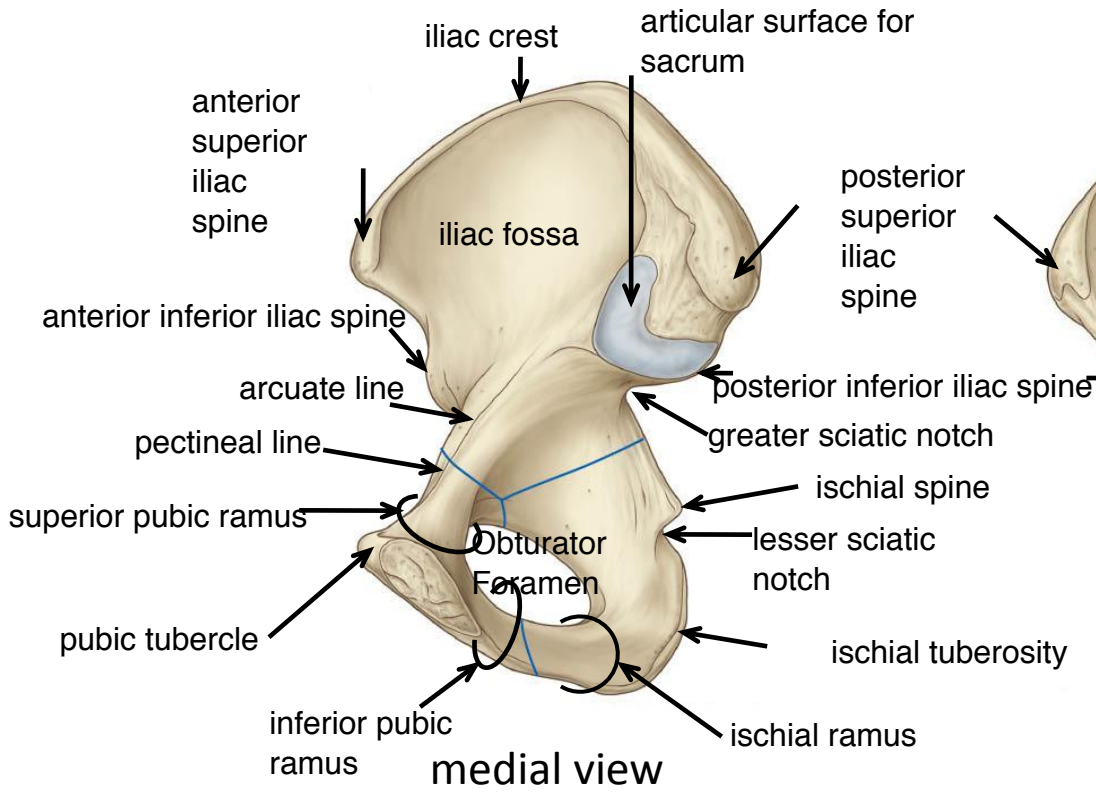
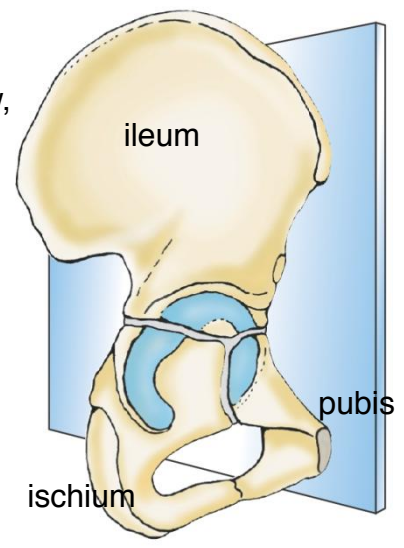
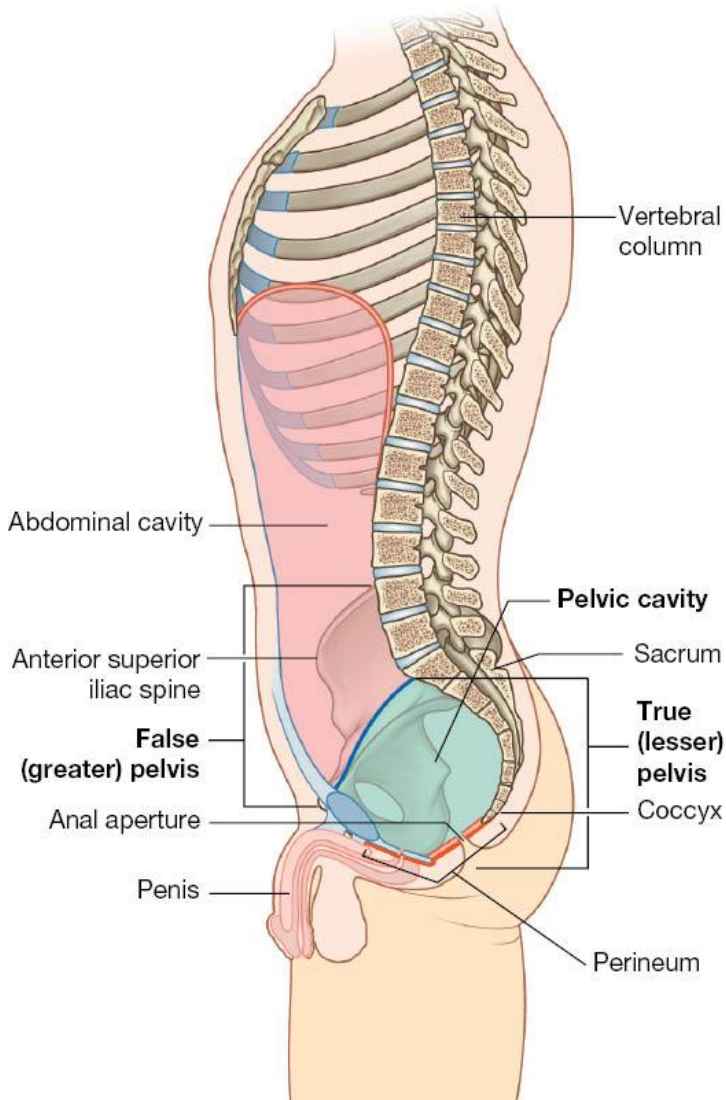
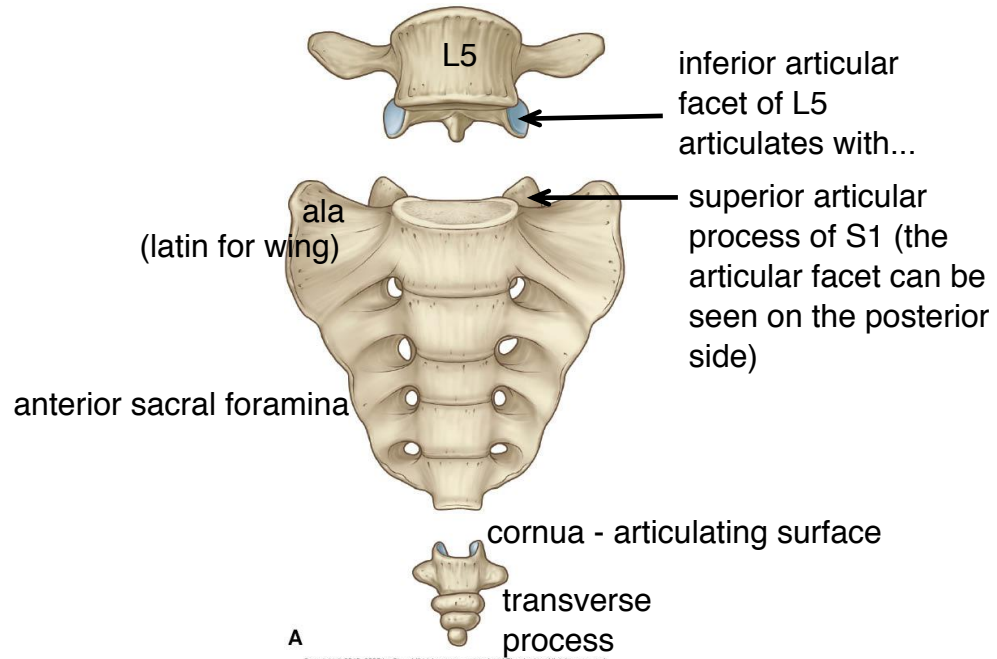


sagittal view, lateral side

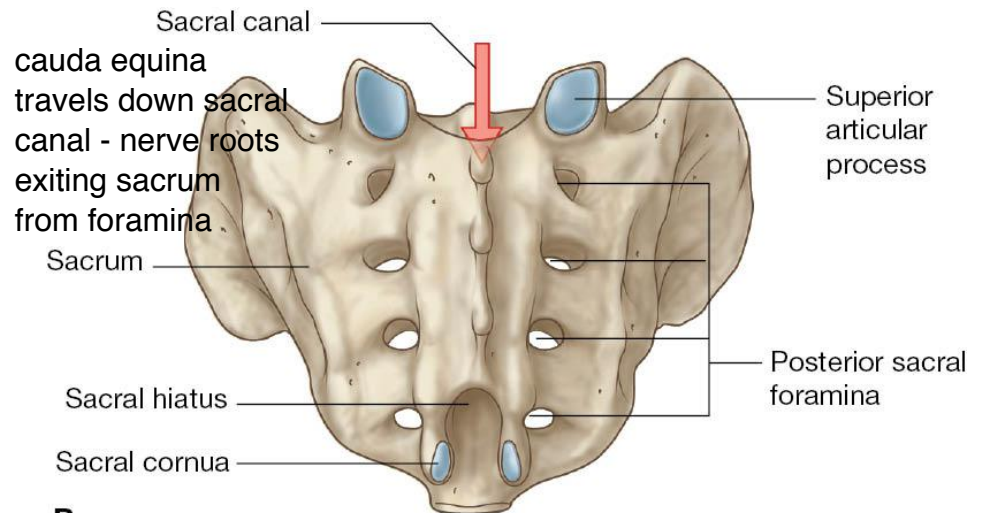




Copyright © 2010, 2005 by Churchill Livingstone, an imprint of Elsevier Inc. All rights reserved.

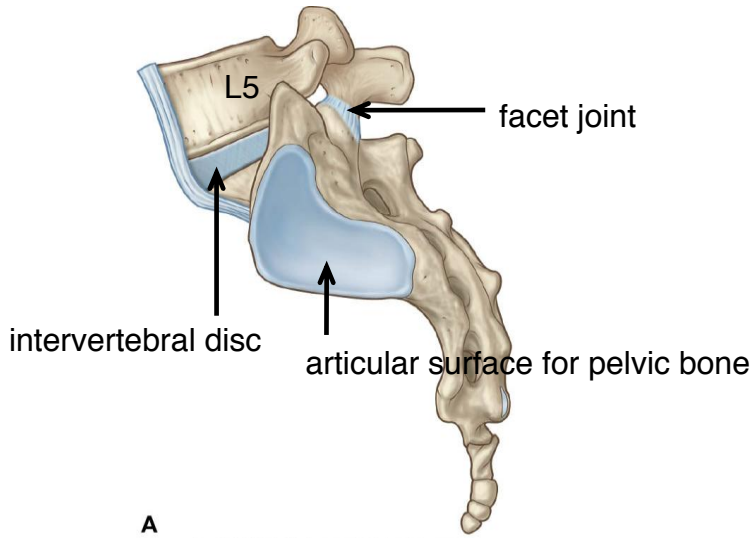


A
 Copyright © 2010, 2005 by Churchill Livingstone, an imprint of Elsevier Inc. All rights reserved.



B

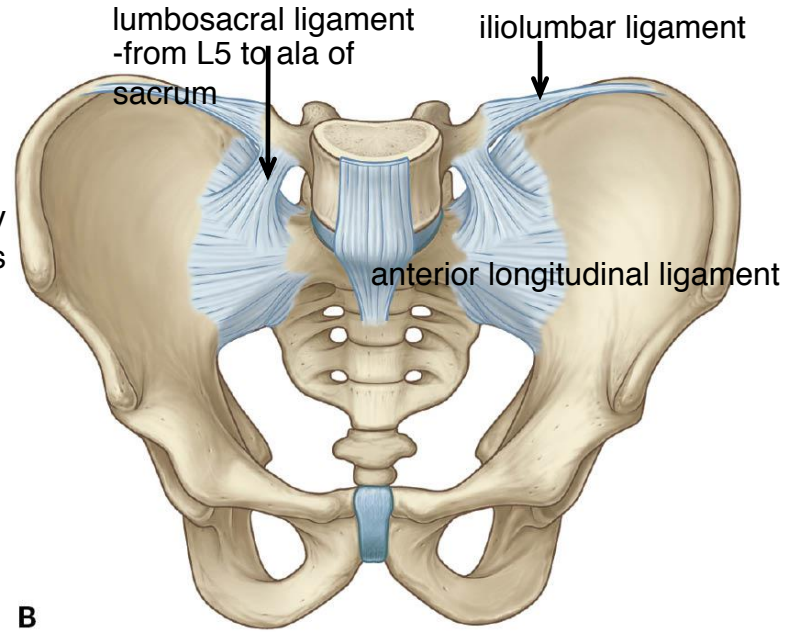
Copyright © 2010, 2005 by Churchill Livingstone, an imprint of Elsevier Inc. All rights reserved.



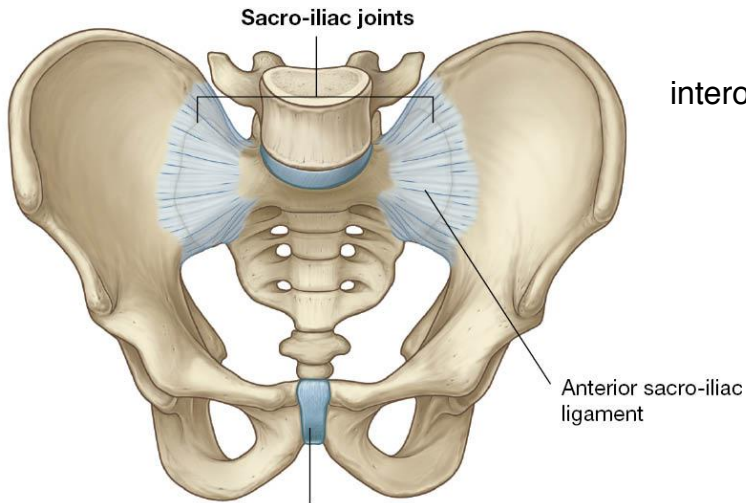
A

Copyright © 2010, 2005 by Churchill Livingstone, an imprint of Elsevier Inc. All rights reserved.

-want to limit motion in the pelvis, so many small ligaments hold it in place

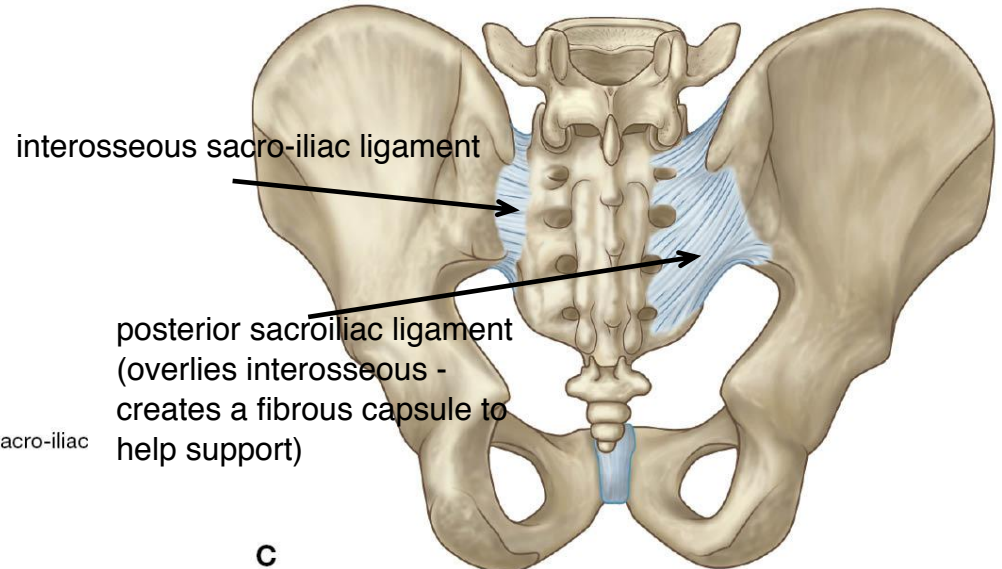


B



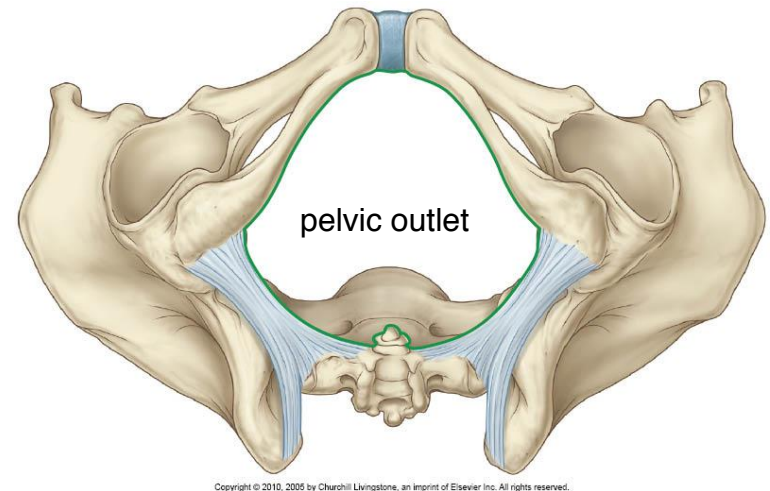
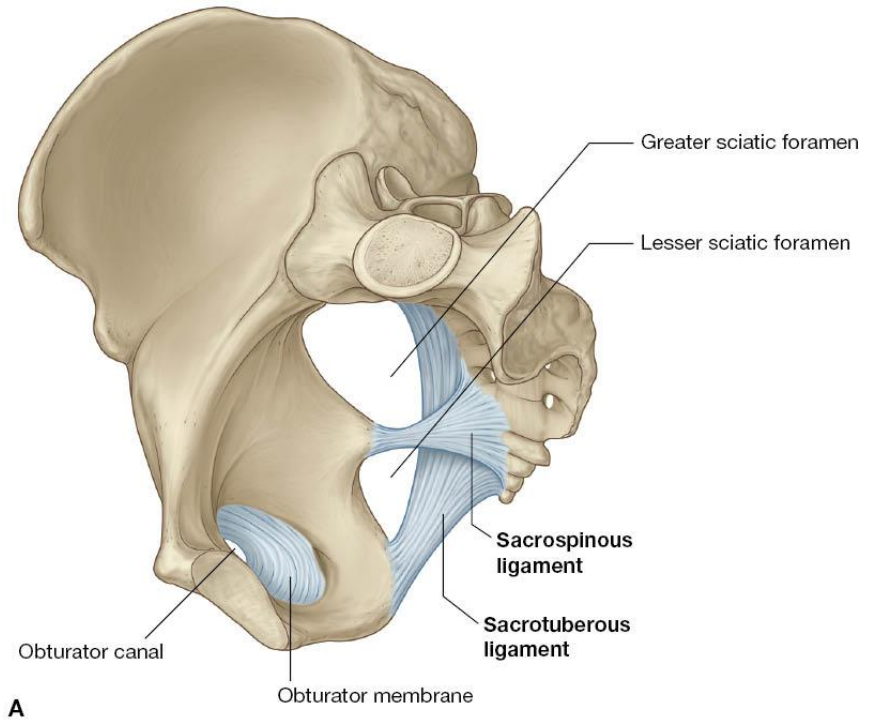
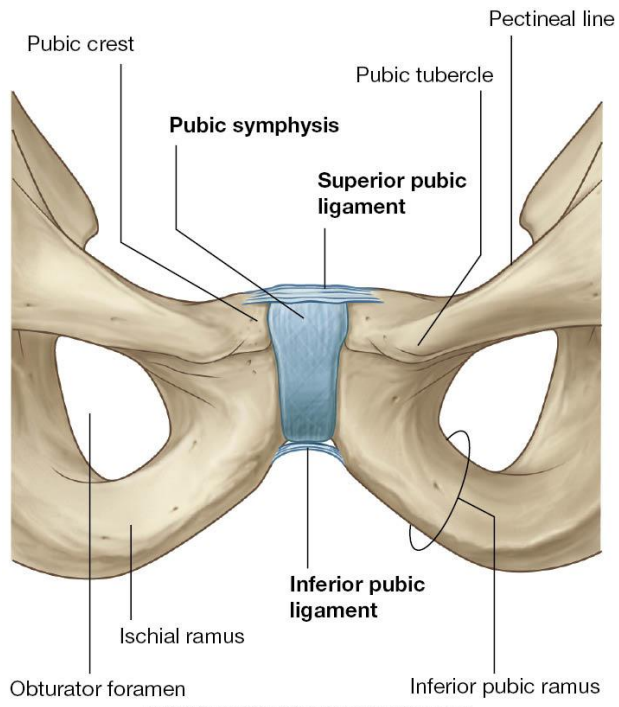
B

Pubic symphysis
made of fibro-cartilage: dense connective tissue allowing cushion and to reduce friction between bones

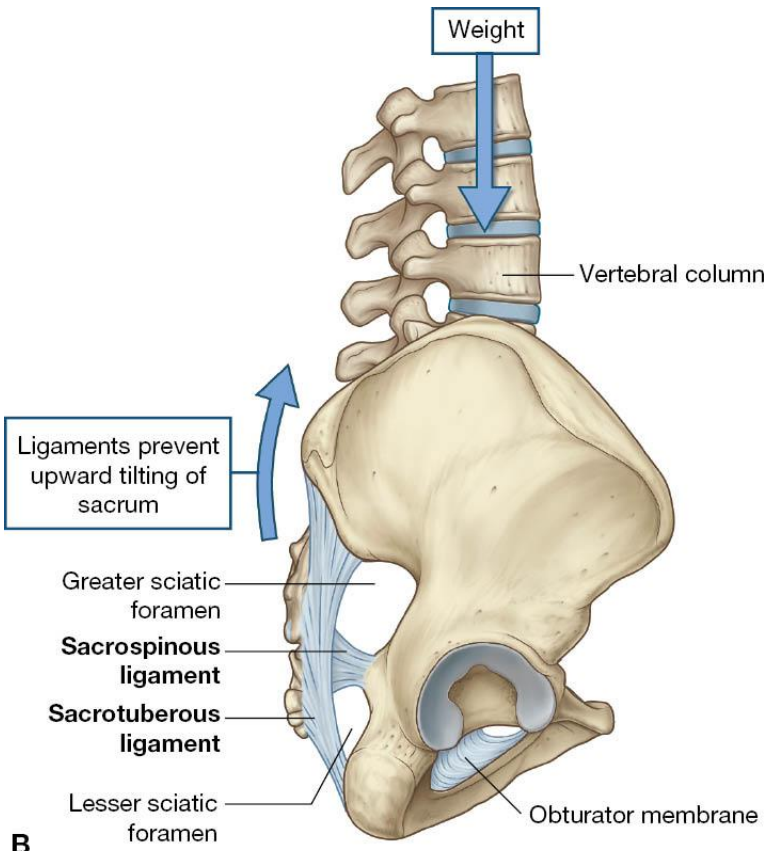


C

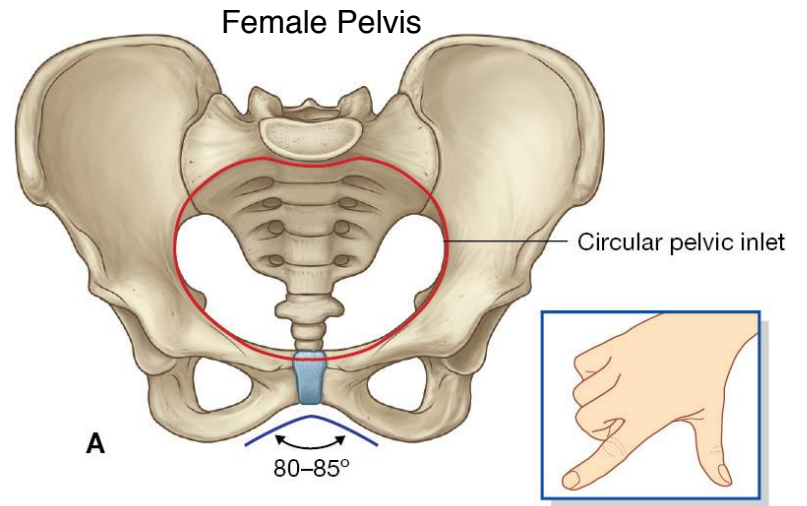
Copyright © 2010, 2005 by Churchill Livingstone, an imprint of Elsevier Inc. All rights reserved.



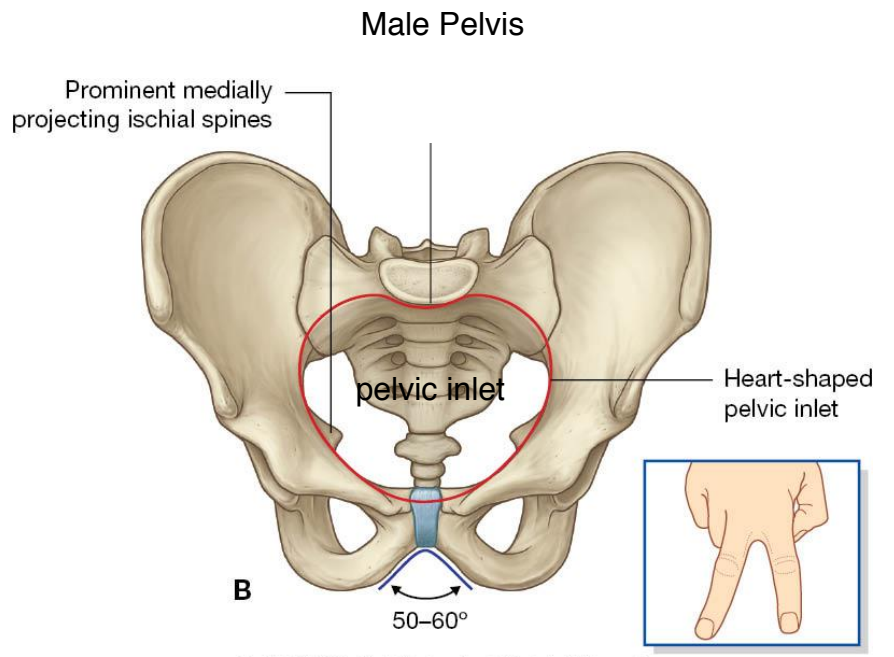
inferior view



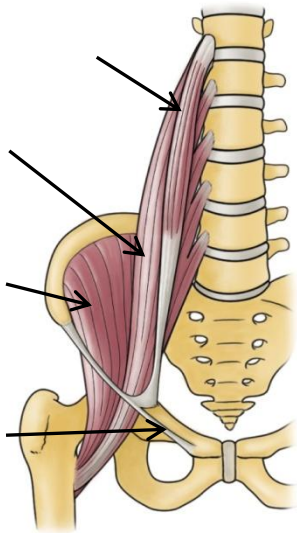
Copyright © 2010, 2005 by Churchill Livingstone, an imprint of Elsevier Inc. All rights reserved.



Copyright © 2010, 2005 by Churchill Livingstone, an imprint of Elsevier Inc. All rights reserved.



Copyright © 2010, 2005 by Churchill Livingstone, an imprint of Elsevier Inc. All rights reserved.



A Anterior view

Copyright © 2011 Wolters Kluwer Health | Lippincott Williams & Wilkins

Psoas major:

Origin: lateral surface of T12 – L5 vertebral bodies, transverse processes and IV discs

Insertion: lesser trochanter of femur

Actions:

Innervation: anterior branch of L1-L3

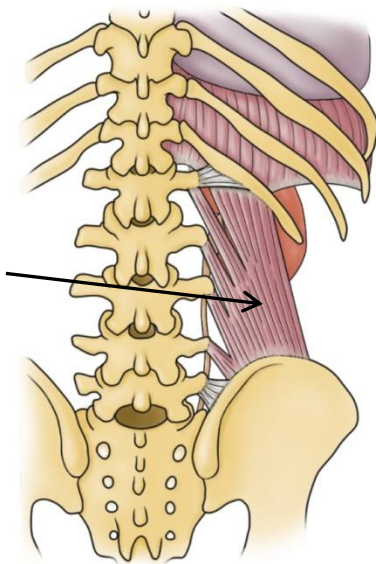
Psoas minor:

Origin: lateral surface of T12 – L1 vertebral bodies and IV discs

Insertion: pectineal line of pelvis

Actions:

Innervation: anterior branch of L1



B Posterior view

Copyright © 2011 Wolters Kluwer Health | Lippincott Williams & Wilkins

Iliacus:

Origin: upper 2/3 of iliac fossa, iliolumbar & anterior sacroiliac ligaments, upper ro-lateral surface of sacrum

Insertion: lesser trochanter of femur

Actions:

Innervation: femoral nerve (L2-L4)

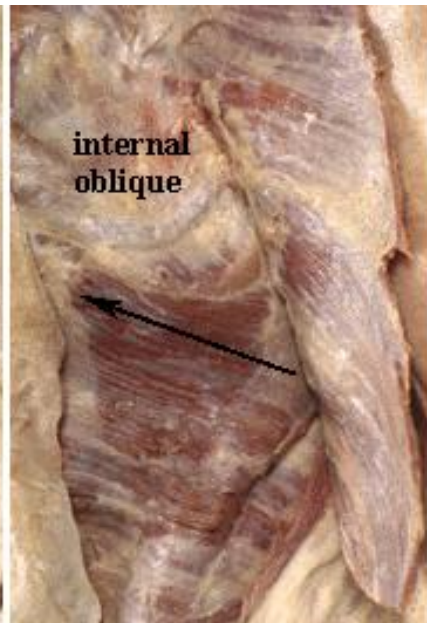
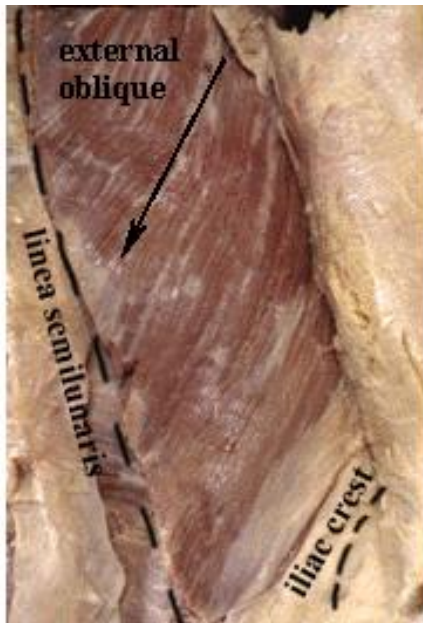
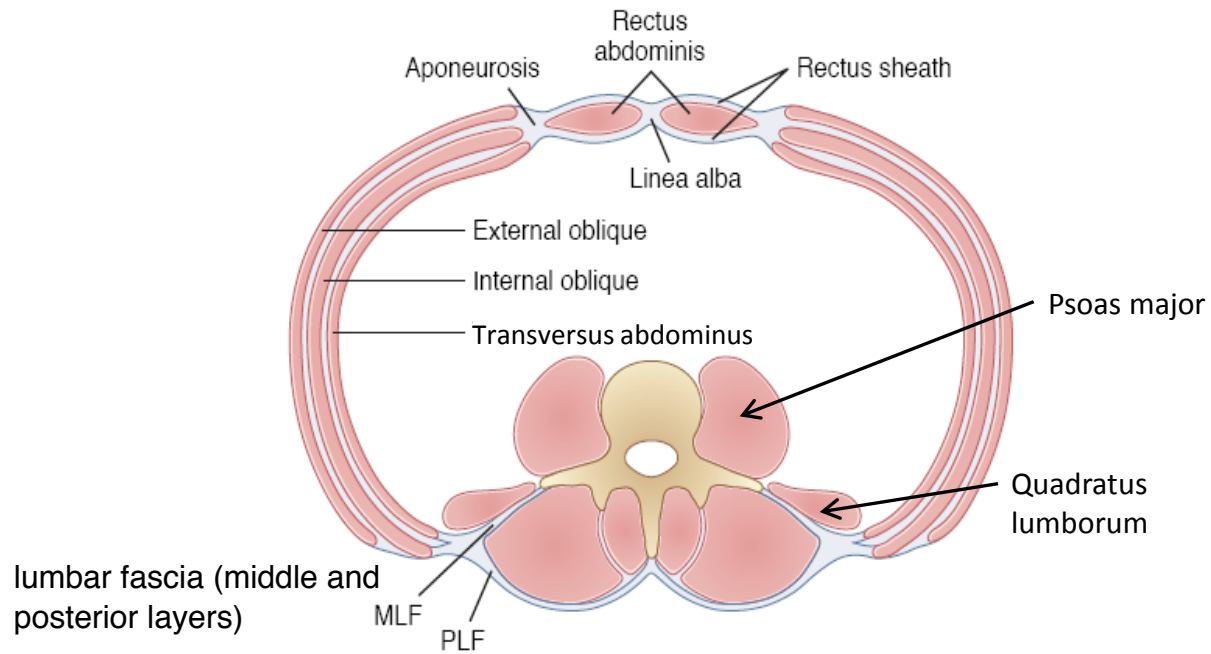
Eratus lumborum:

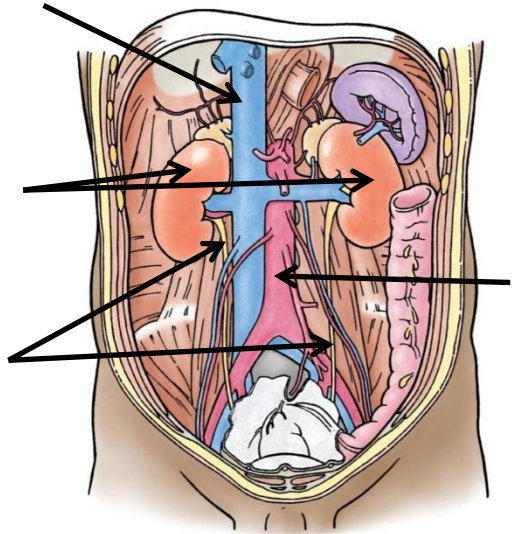
Origin: transverse processes of lumbar vertebrae, iliac crest

Insertion: inferior border of rib 12

Actions:

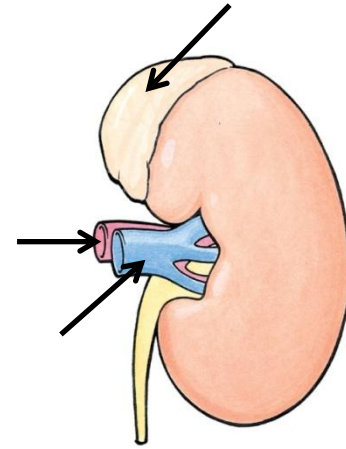
Innervation: anterior branch of T12 and L1-L4





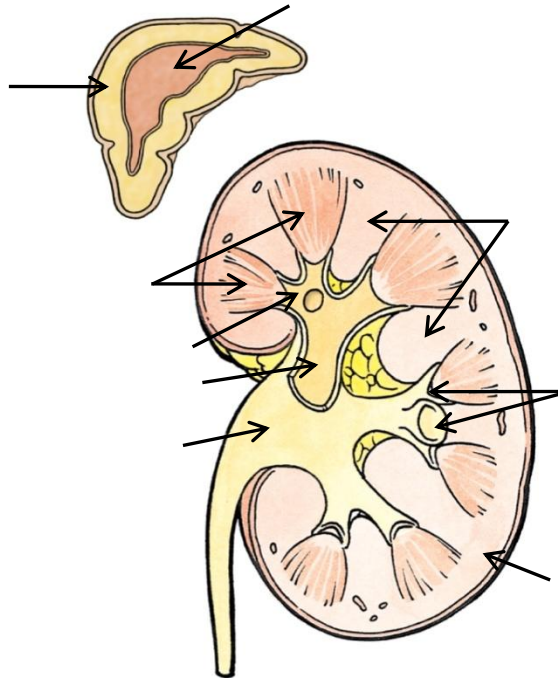
Anterior view

Copyright © 2011 Wolters Kluwer Health | Lippincott Williams & Wilkins



Anterior view

Copyright © 2011 Wolters Kluwer Health | Lippincott Williams & Wilkins



Coronal section

Copyright © 2011 Wolters Kluwer Health | Lippincott Williams & Wilkins