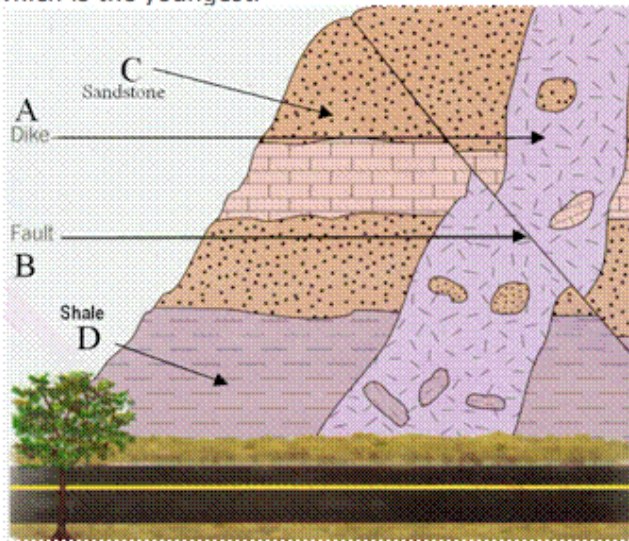


Question 1

Which is the youngest?



- a. A
- b. B
- c. C
- d. D

Question 2

1 points

A particular sedimentary environment close to a mountainous range is composed of coarse clastic sediments arranged in a lobed manner. Fossils are very rare in these sediments. What type sedimentary environment is most likely being described here?

- a. Delta
- b. Submarine Fan
- c. Barrier Island
- d. Shallow Marine Environment
- e. Alluvial Fan

Question 3

Which of the following would contribute MOST to the way in which we correlate rocks "in time" over large distances?

- a. James Hutton
- b. William Smith
- c. George Cuvier
- d. Charles Lyell
- e. Geovanni Arduino

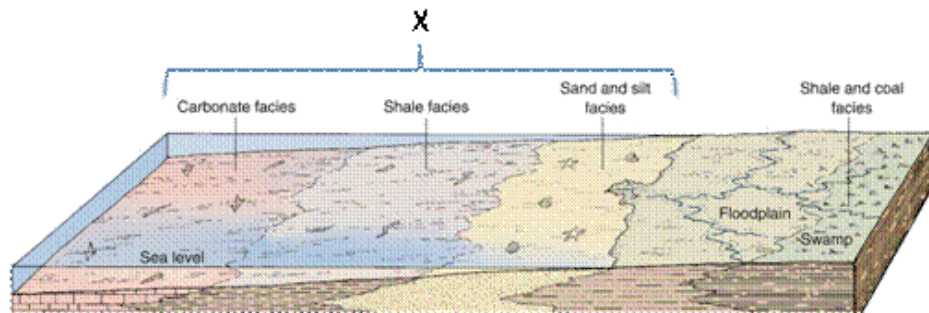
Question 4

Which of the following concerning Uniformitarianism is FALSE?

- a. It explains how igneous rocks were precipitated out of a mineral rich ocean
- b. It describes slow processes
- c. It may fail to account for processes that occur in primitive Earth conditions
- d. It was developed by James Hutton
- e. Weathering is an important processes in uniformitarianism

Question 5

What name would you give to the sedimentary environment indicated by X?



- a. Delta
- b. Continental Shelf
- c. Lake
- d. Barrier Island
- e. Continental Slope

Question 6

Who was the first to realize that rocks at the bottom of a sequence of horizontal strata were likely the oldest?

- a. James Hutton
- b. Herodotus
- c. Steno
- d. Lyell
- e. Smith

Question 7

Which of the following regarding continental shelf environments are true?

- i. They are the submerged margins of continents
- ii. The continental shelf runs smoothly at a shallow angle into the deep marine environment
- iii. Continental shelves covered in warm shallow seas that receive little clastic sediment commonly demonstrate biochemical sedimentation
- iv. Turbidites are the main agents of sediment deposition
- v. Continental shelves are fairly flat

- a. i. ii. v.
- b. i. iv.
- c. ii. iv.
- d. i. iii. v.
- e. ii. iii. v.

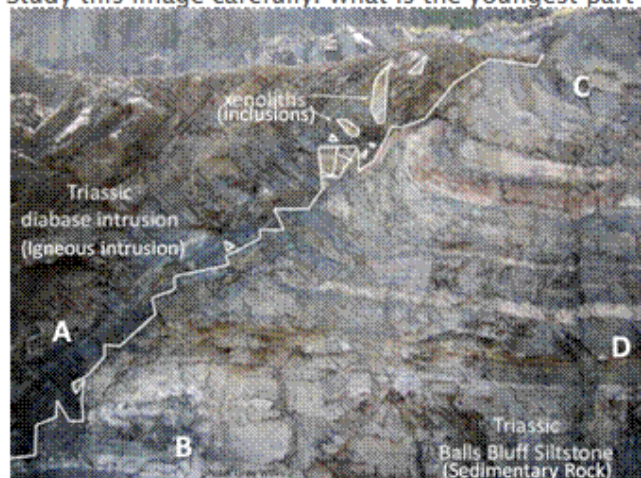
Question 8

Which of the following concerning Neptunists is TRUE?

- a. They believed that igneous rocks were the youngest rocks on Earth
- b. They believed that geological structures could be understood by considering present day processes
- c. They held a "plutonist" view regarding the formation of igneous rocks
- d. They believed many of Earth's early rocks precipitated out of a global ocean
- e. "Actualism" is another form of "Neptunism"

Question 9

Study this image carefully. What is the youngest part of this geological section?



- a. A
- b. B
- c. C
- d. D
- e. It is not possible to tell

Question 10

From oldest to youngest, what is the correct sequence of events in this image?
NOTE: the dike is the geological feature that runs diagonally across this image.



- a. Folding > Deposition of sediments > intrusion of dike
- b. Intrusion of dike > Deposition of sediments > folding
- c. Deposition of sediments > folding > intrusion of dike
- d. Deposition of sediments > intrusion of dike > folding
- e. Deposition and intrusion at the same time > folding

What sedimentary environment is this?



- a. Delta
- b. Submarine Fan
- c. Barrier Island
- d. Shallow Marine Environment
- e. Alluvial Fan

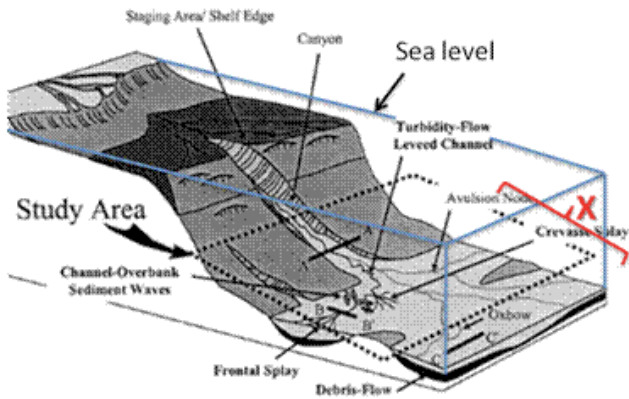
Question 12

Which of the following statements is False?

- a. Catastrophism was developed by Baron Georges Leopold Cuvier.
- b. Catastrophism held that new animals emerged on Earth following catastrophes
- c. Catastrophism held that unconformities were evidence of a large global event
- d. Uniformitarianism has completely replaced catastrophism
- e. Charles Lyell was an important critic of catastrophism

Question 13

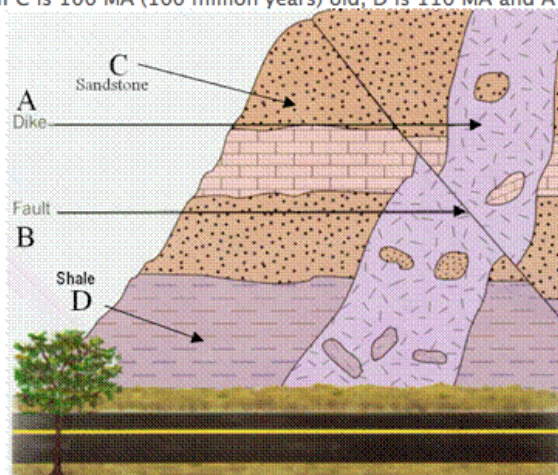
Name the sedimentary environment identified by X.



- a. Delta
- b. Submarine Fan
- c. Barrier Island
- d. Shallow Marine Environment
- e. Alluvial Fan

Question 14

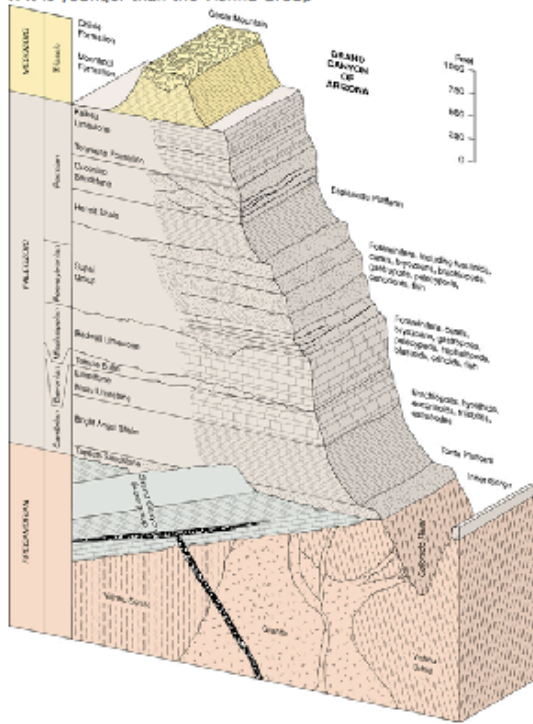
If C is 100 MA (100 million years) old, D is 110 MA and A is 50 MA when did movement occur along the fault?



- a. More than 110 million Years Ago
- b. Between 110 and 100 million years Ago
- c. Between 110 and 50 million years ago
- d. Sometime after 50 million years ago
- e. Sometime earlier than 50 million years ago

Consider the geologic section of the Grand Canyon below, taken from the text book (page 119). Which of the following statements about the black igneous intrusion MUST be true?

- i. It must be older than the Paleozoic rocks.
- ii. It must have been intruded before the Grand Canyon Supergroup was tilted.
- iii. It was intruded before the formation of the angular unconformity.
- iv. It was intruded after the formation of the inner gorge.
- v. It is younger than the Vishnu Group



- a. i and ii
- b. iii only
- c. iii and iv
- d. ii and iv
- e. v only