

Question 1

As a world famous scientist, you have just discovered a new hormone. Although the gland that synthesizes this hormone is still unknown, when identified it will most likely have the following two features:

1. _____
2. _____

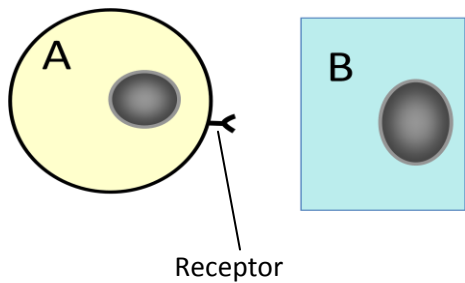
Question 2

A 42 year old male patient requires daily injections of thyroxin. As a keen undergraduate student you know that the substrate for this hormone is classified as:

- A. A protein
- B. A steroid
- C. An amino acid
- D. None of the above

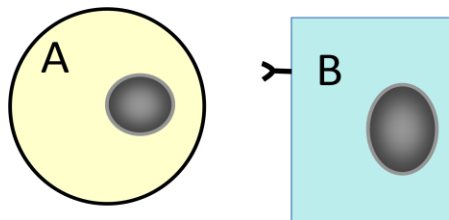
Question 3

Which ONE of these two cells is a source of a hormone in a system that relies on a paracrine mode of delivery?



Question 4

Which ONE of these two cells is a source of a hormone in a system that relies on an autocrine mode of delivery?

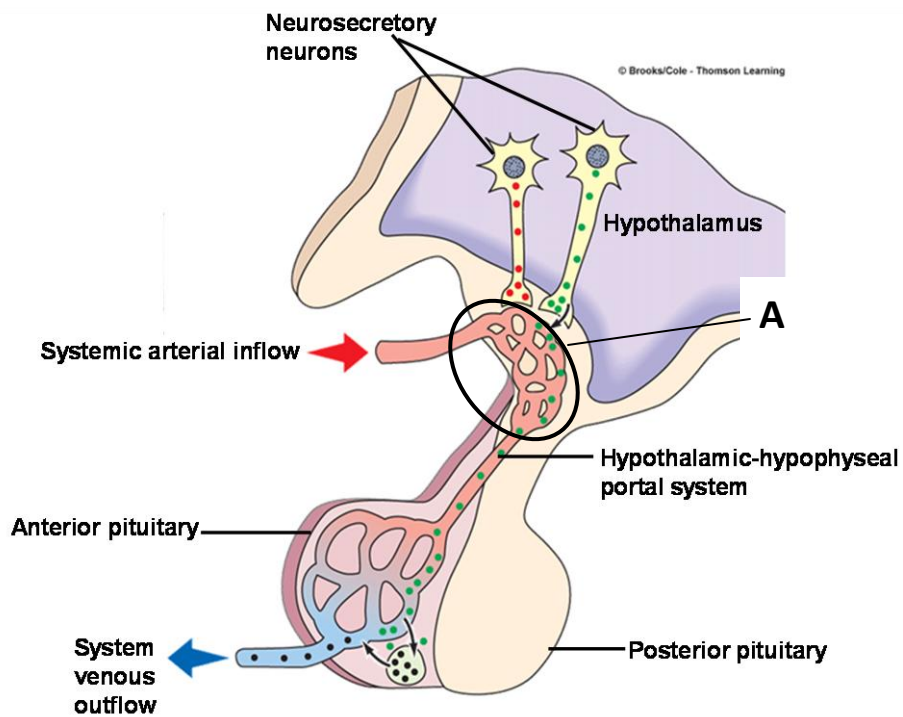


Question 5

Binding of a hypothetical hormone to its receptor increases intracellular calcium levels. The enzyme that functions as an effector (activates the release of a second messenger) in the above system is:

- A. Adenylyl cyclase
- B. Protein kinase A
- C. Protein kinase C
- D. Phospholipase C

Question 6



Which ONE of the following hormones is released into area labeled 'A':

- A. Follicle stimulating hormone
- B. Antidiuretic hormone
- C. Thyroid stimulating hormone
- D. Thyrotropin releasing hormone

ANSWERS

Question 1

- A. It will be ductless
- B. It will be well vascularized

Question 2

- C. An amino acid

Question 3

Cell B

Question 4

Cell B

Question 5

- D. Phospholipase C

Question 6

- D. Thyrotropin releasing hormone