

PSY 3303E  
Personality

12. Integrative perspectives :  
Personality dispositions and processes

Dave Miranda

School of Psychology  
Faculty of Social Sciences  
University of Ottawa  
April 5, 2013

---

---

---

---

---

---

---

---

Personality

Personality consists of patterns of cognitions, emotions, and behaviours that remain relatively stable across time and situations. Personality includes human nature, individual differences, and individual uniqueness and is thereby a synthesis of the human psychological system in which foundations are biological, psychological, social, and cultural.

---

---

---

---

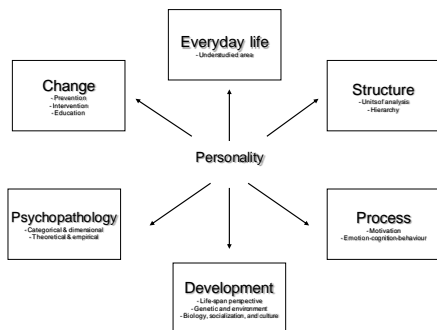
---

---

---

---

Six Basic Topics



---

---

---

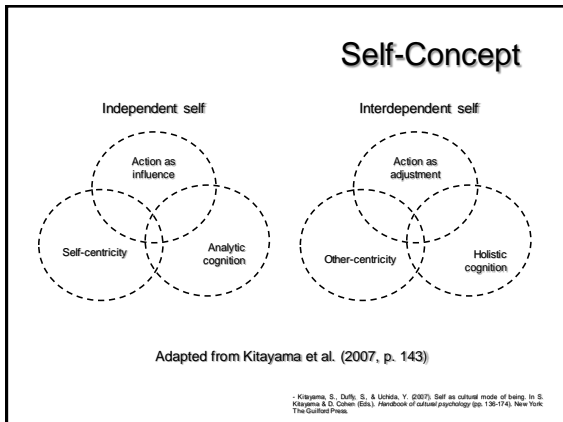
---

---

---

---

---




---

---

---

---

---

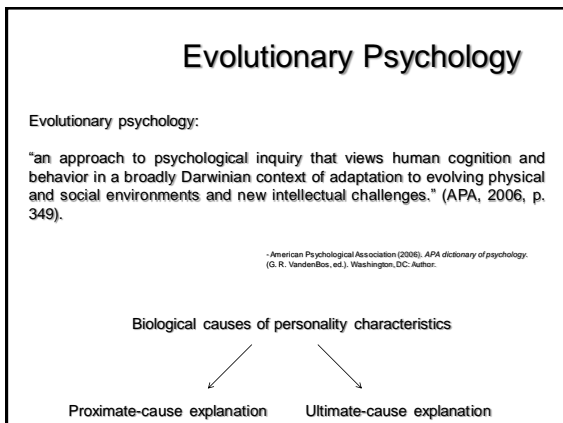
---

---

---

---

---




---

---

---

---

---

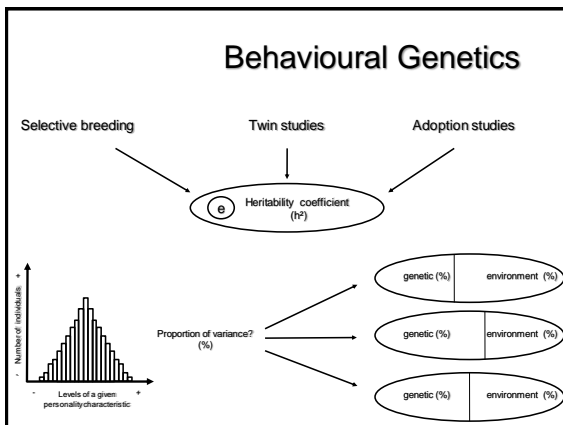
---

---

---

---

---




---

---

---

---

---

---

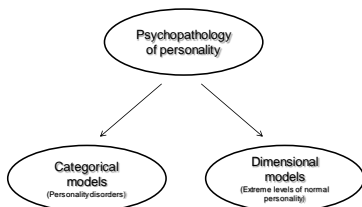
---

---

---

---

## Psychopathology of Personality




---

---

---

---

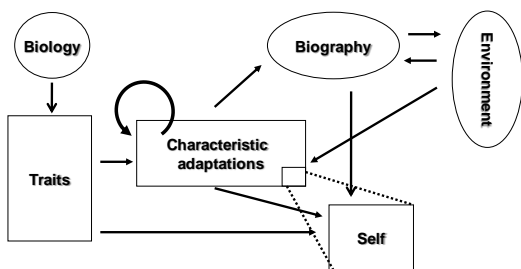
---

---

---

---

## Five-Factor Theory Personality system



- McCrae, R.R., & Costa, P.T. Jr. (1999). A Five-Factor Theory of personality. In L. A. Pervin and O. P. John (Eds.), *Handbook of Personality: Theory and Research*, 2nd edition (pp. 139-153). New York: The Guilford Press.

---

---

---

---

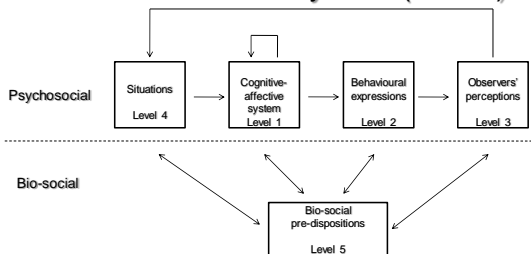
---

---

---

---

## Cognitive Affective Personality System (CAPS)



- Mischel, W., & Shoda, Y. (1999). Integrating dispositions and processing dynamics within a unified theory of personality: the Cognitive-Affective Personality System. In L. A. Pervin and O. P. John (Eds.), *Handbook of Personality, Theory and Research*, 2nd edition (pp. 197-218). New York: The Guilford Press

---

---

---

---

---

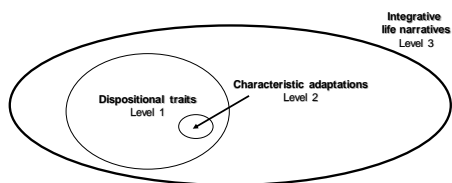
---

---

---

## Three Levels of Personality

"Put simply, dispositional traits sketch an outline of the person; characteristic adaptations fill in the details; and integrative life stories tell you what a life means in the overall" (McAdams, 2006, p. xviii).



-McAdams, D.P. (2006). *The person: a new introduction to personality psychology* (4th Ed.). Hoboken: Wiley.

---

---

---

---

---

---

---

---

## Personality Architecture

- Cervone, D. (2005). Personality architecture: Within-person structures and processes. *Annual Review of Psychology*, 56, 423-452.

---

---

---

---

---

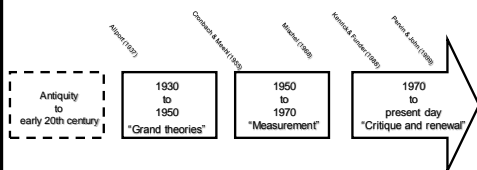
---

---

---

## Historical Overview

Three historical periods (McAdams, 2006)



- Allport, G. W. (1937). *Personality: a psychological interpretation*. New York: Holt, Rinehart, and Winston.  
 - Cronbach, L. J., & Meehl, P. E. (1955). Construct validity in psychological tests. *Psychological Bulletin*, 52, 281-302.  
 - Meehl, W. (1988). *Personality and assessment*. New York: John Wiley & Sons.  
 - Kenrick, D. T., & Funder, D. C. (1988). Profiling from controversy: lessons from the person-situation debate. *American Psychologist*, 43, 23-34.  
 - Penne, L.A., & John, G. P. (1988). *Handbook of personality: theory and research* (2nd Ed.). New York: Guilford.

- McAdams, D.P. (2006). *The person: a new introduction to personality psychology* (4th Ed.). Hoboken: Wiley.

---

---

---

---

---

---

---

---

## Scientific Trends

Robins et al. (1999, p.122)

\*Robins, R. W., Gosling, S. D., & Craik, K. H. (1999). An empirical analysis of trends in psychology. *American Psychologist*, 54, 117-128.

---

---

---

---

---

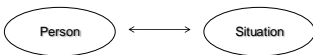
---

---

---

## Social Psychology

$$b = f(p, s)$$



Kurt Lewin

---

---

---

---

---

---

---

---

## Personality

Gordon Allport

---

---

---

---

---

---

---

---

Personality and Social Psychology

---

---

---

---

---

---

---

---

Personality

Thank You!

---

---

---

---

---

---

---

---