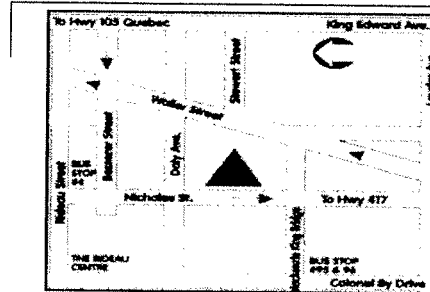


NEW THEORIES
NEW PRACTICES
Deprivation of Liberty



Directions to Jail Tour
(International Hostel)

- 75 Nicholas Street
- (613) 232-0344
- www.hauntedwalk.com
- 7 pm nightly tour
- Take notes for 2nd mid-term; keep receipt for full mid-term mark
- Directions: East of the Rideau Centre
- From Ottawa U campus, walk east on Laurier to Nicholas. Go north (right) onto Nicholas. Just under bridge, hostel/jail (grey stone building) is on right side.

PRISON

- = Sanction
- = Recent Development

- Roman Empire = Holding Cells & Penal Servitude
- M.A. = Holding Cells
- Late 18th C = Workhouses
- Debtor's Prison

COUNTY JAIL

- Profit
- Fee for cost of living
- Fee for each step of process
- Fee for viewing
- NO Regulation of ADM
- Disease

LATE 1700's

- Crisis in Criminal Justice:
 - A) Transportation Ceased
 - B) Increase in Leniency
 - Act of 1800 = Reduction in:
 - i) Corporal Punishment
 - ii) Capital Punishment

LATE 1700's continued

- C) Enlightenment
 - Challenge Monarchy
 - D) Crime Waves
 - Overcrowding
 - E) Industrial Revolution
 - Labour Market, Disciplined Workers
 - F) Classical Criminology
 - Calls for Calculated **Punishments**
-

SOLUTIONS TO CRISIS

- Hulks
 - Jails become default penalty
 - Jails become primary penalty

 - Result = Overcrowding & Deplorable Conditions
-

CONTEXT OF REFORM

- JOHN HOWARD
 - petitions state to abandon jails
 - ELIZABETH FRY
 - classification
 - conditions for:
 - women
 - children
-

REFORM ALTERNATIVE

- INCARCERATION
 - PRISON =
 - control body & mind
 - remove temptations
 - discipline:
 - prisoners
 - guards
-

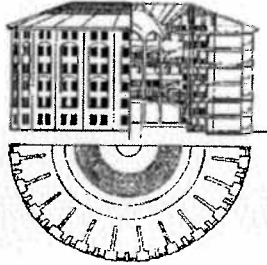
JUSTIFICATIONS

1. PUNISHMENT
 - Labour
 2. TEACH
 - Labour
 - Socialization
 3. REFORM & REPENT
 - Penance
 - Solitary Confinement
-

BENTHAM'S PANOPTICON

- All - Seeing
 - Power = Mind over Mind
 - Moral Instruction
 - Walls
 - Separation, No Escape
 - Solitude = Repent
 - Discipline
 - Chaplain
-

Bentham's Panopticon



<http://cartome.org/panopticon1.htm>

1779 - Britain

PENITENTIARY ACT

1780 - 1840

■ PRISON CONSTRUCTION

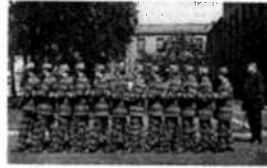
- Silence
 - Reflection
 - Repentance
 - Instil Work Habits
-
- Control over body and mind of individual

MODELS OF PRISONS

1. AUBURN

- Strict Lock Up
- Silent System
- Anonymity
- Canada + U.S.

AUBURN



Prisoners in lockstep, c. 1910.

• The prisoners were required to walk in lockstep, to work in local factories, and were not allowed to speak to each other without permission.

• Talking was the most common inmate violation of the rules and the resulting punishment was severe.

<http://history.sandiego.edu/gen/soc/prison.html>

MODELS OF PRISONS

2. PENNSYLVANIA

- Total Isolation
- Larger Cells (Work Station)
- No Communication
- Europe

PENNSYLVANIA



7. Separate cell in Pennsylvania Prison with hammock slung for sleeping and loom for day work.

CONCLUSION

- IRONY = HUMANE vs. BRUTAL
- REMOVAL FROM COMMUNITY
- PUNISHMENT = LONGER
- HIDDEN = UNCHECKED

REFORM?

- PRISON = NEW FORM OF PUNISHMENT

Reflects:

1. RELATIONS OF POWER
2. NEEDS OF ECONOMY
3. NEEDS OF THE STATE
4. BUREAUCRATIC CAPABILITIES

About Elizabeth Fry



- Born on May 21st 1780
- A Quaker
- Worked to reform the prison system in Britain in the early 19th century
- “The Association for the Improvement of the Female Prisoners in Newgate”.

Elizabeth Fry Society of Ottawa

- The Elizabeth Fry Society of Ottawa provides assistance to women involved in the criminal justice system and those at risk of coming into conflict with the law. It provides practical and effective support services for women incarcerated in provincial and federal institutions, and for women in Ottawa.
- www.efryottawa.com
- John Howard Society: www.ottawa.johnhoward.ca

Elizabeth Fry Society of Ottawa

- A feminist organization devoted to working with women who have been criminalized or who may become criminalized.
- Takes a systemic focus to programming by working in partnerships with community in which clients live, and by taking a holistic approach to policies and programming.
- Works from a human rights and anti-oppression perspective, client-centered to empower.
- Promotes a respectful, diverse and inclusive environment.
- A leader in social equity and a voice for social change.

JF Norwood House

- J.F. Norwood House is transitional housing offering supportive living for women and families. Drawing from community support and contributions, it offers women and families a chance at successful reintegration, an opportunity to work on education and employment objectives, and access services while supported by an environment that nurtures their individualities and potential.